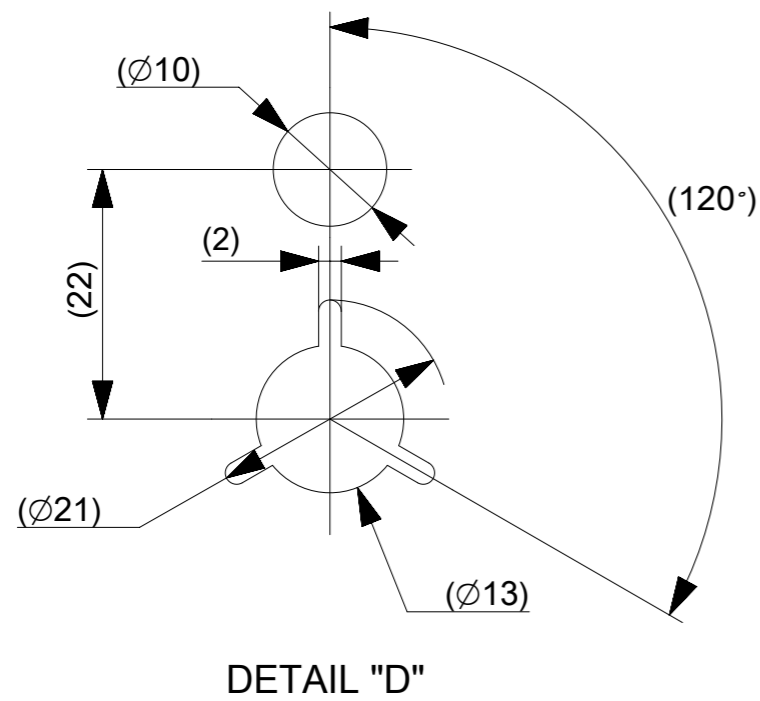
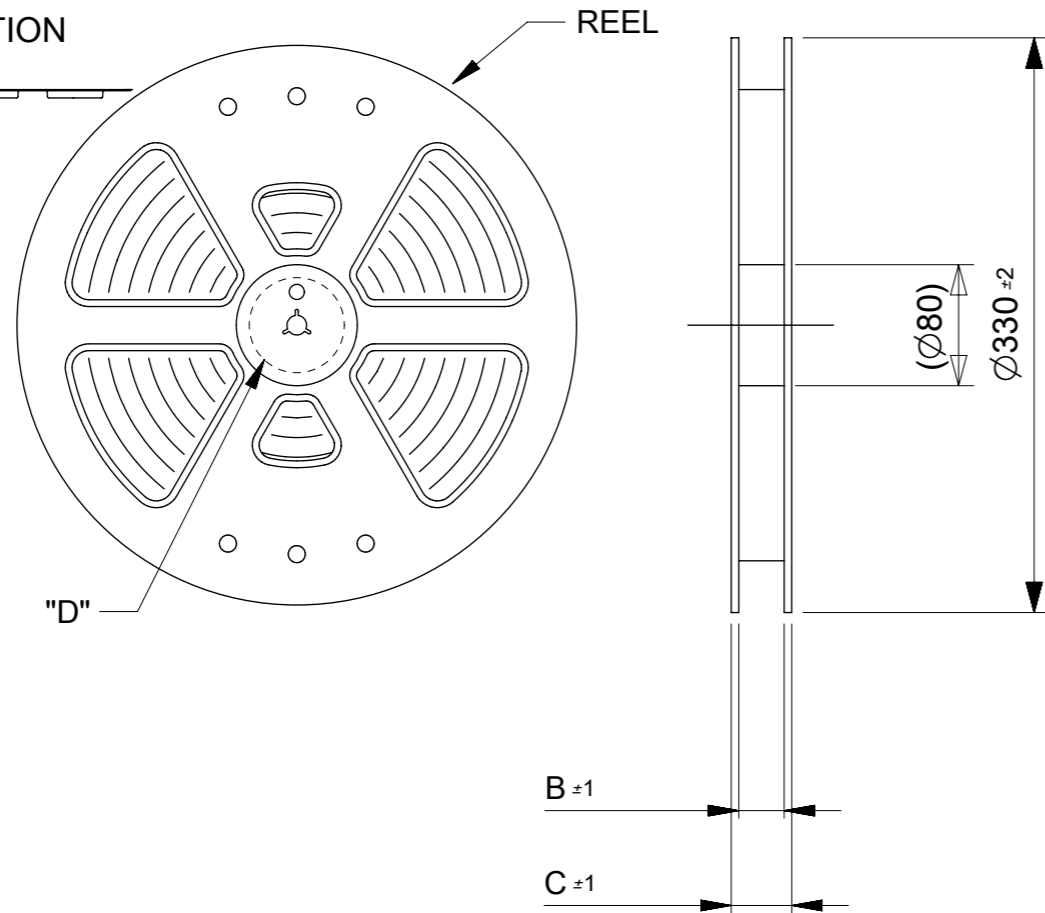
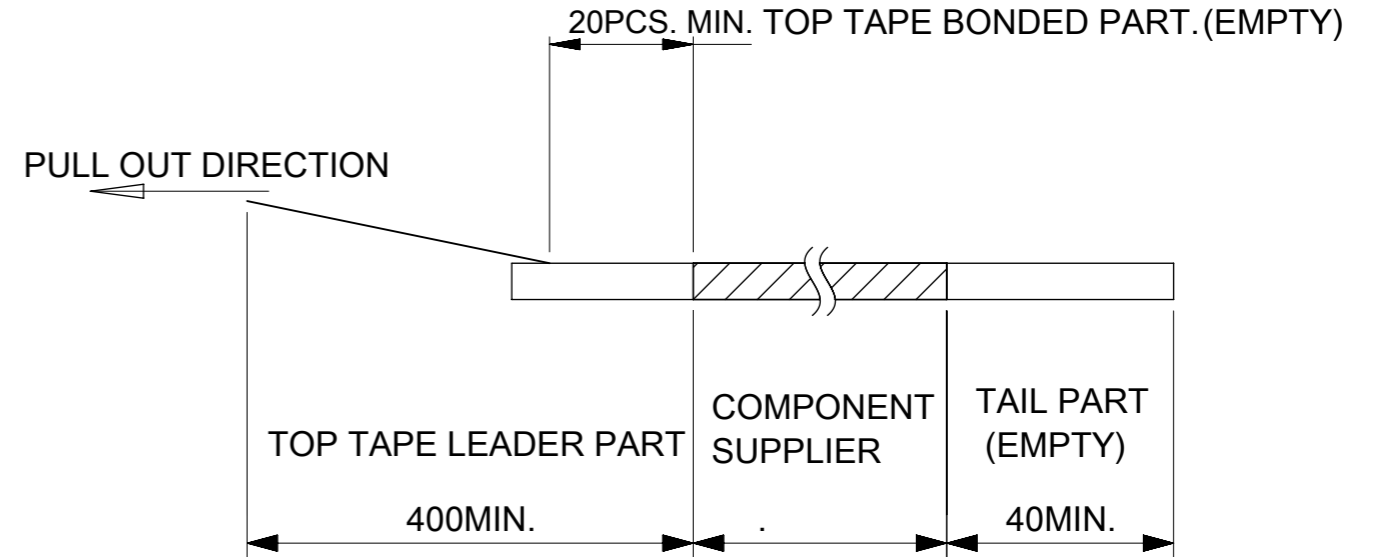


PULL OUT DIRECTION



NOTES

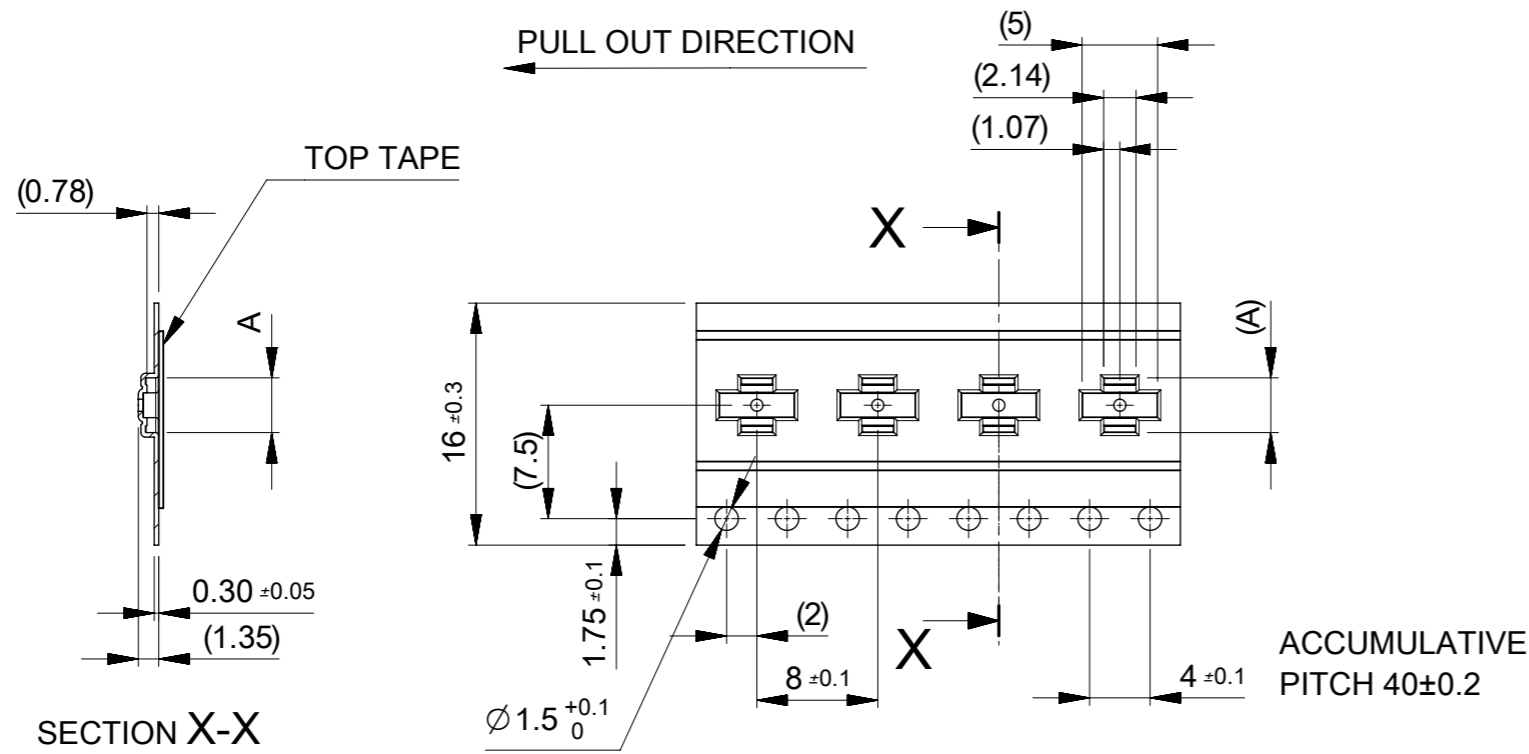
- RE DETAILED DIMENSION, SEE PRODUCT DRAWING.
- NUMBER OF CONNECTORS : 6000 PCS/REEL.
- LEAD TAPE LENGTH.



- TOP TAPE PEEL FORCE IS DEFINED BY IEC60286-3
- MATERIAL
CARRER TAPE :POLYSTYRENE
TOP TAPE :PET , OTHER
REEL :POLYSTYRENE(PS)(RECYCLE MATERIAL CONTAINED)
- ELV AND RoHS COMPLIANT

MODEL NO. 505066-**20

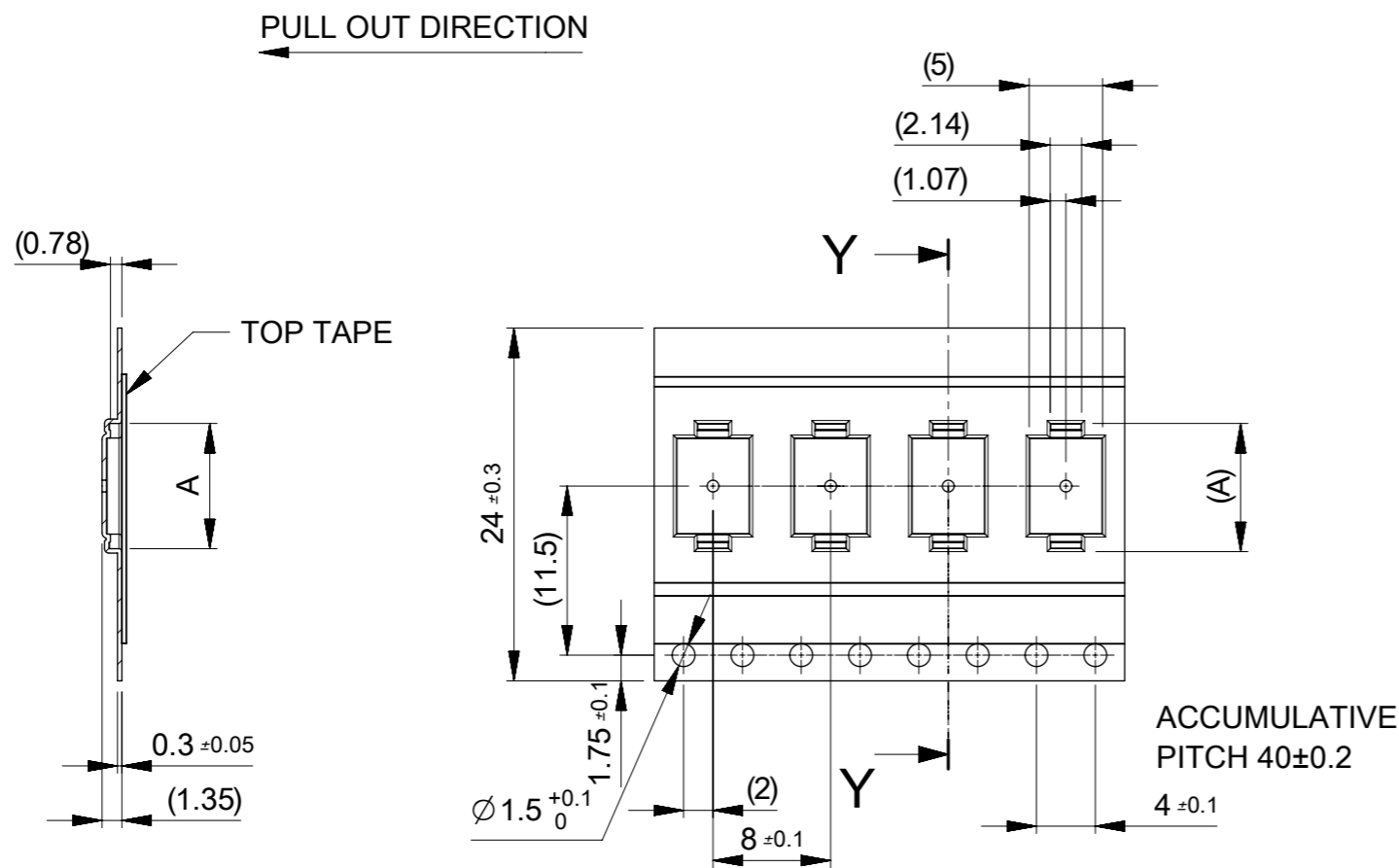
THIS DRAWING CONTAINS INFORMATION THAT IS PROPRIETARY TO MOLEX ELECTRONIC TECHNOLOGIES, LLC AND SHOULD NOT BE USED WITHOUT WRITTEN PERMISSION									
RELEASED	EC NO. 109660	2016/11/17	GENERAL TOLERANCES (UNLESS SPECIFIED)		DIMENSION UNITS	SCALE	molex [®]		
	DRWN: TSOMEYA	2016/12/01	ANGULAR TOL ± 1.0 °		MM	1:5			
	CHK'D: KTANAKA03	2016/12/01	4 PLACES	± 0.01	DRWN BY	DATE	PRODUCT CUSTOMER DRAWING		
	APPR: TKUSUHARA01	2016/12/01	3 PLACES	± 0.03	TSOMEYA	2016/11/17			
			2 PLACES	± 0.05	CHK'D BY	DATE	505066 SEE CHART GENERAL		
		1 PLACE	± 0.1	KTANAKA03	2016/12/01	DOCUMENT NUMBER DOC TYPE DOC PART SHEET NUMBER			
		0 PLACES	± 0.2	APPR BY	DATE				5050660000 PSD 001 1 OF 3
A	REV		DRAFT WHERE APPLICABLE MUST REMAIN WITHIN DIMENSIONS		DRAWING SIZE	THIRD ANGLE PROJECTION			
					A3				



16	21.4	17.4	7.82	505066-3020	○	---	30
			6.77	505066-2420	○	---	24
			6.42	505066-2220	○	---	22
			6.07	505066-2020	○	---	20
			5.72	505066-1820	---	---	18
			5.37	505066-1620	○	---	16
			5.02	505066-1420	○	---	14
			4.67	505066-1220	○	---	12
			4.32	505066-1020	○	---	10
			3.97	505066-0820	---	○	8
3.62	505066-0620	○	---	6			
キャリアテープ幅 CARRIER TAPE WIDTH	C	B	(A)	MATERIAL No.	HIGH VOL. TOOL	LOW VOL. TOOL	CIRCUIT
					SAMPLE PREPARATION		

THIS DRAWING CONTAINS INFORMATION THAT IS PROPRIETARY TO MOLEX ELECTRONIC TECHNOLOGIES, LLC AND SHOULD NOT BE USED WITHOUT WRITTEN PERMISSION

EC NO: 109660 DRWN: TSOMEYA CHK'D: KTANAKA03 APPR: TKUSUHARA01	2016/11/17	2016/12/01	2016/12/01	GENERAL TOLERANCES (UNLESS SPECIFIED) ANGULAR TOL ± 1.0 ° 4 PLACES ± 0.01 3 PLACES ± 0.03 2 PLACES ± 0.05 1 PLACE ± 0.1 0 PLACES ± 0.2 DRAFT WHERE APPLICABLE MUST REMAIN WITHIN DIMENSIONS	DIMENSION UNITS	SCALE	
	RELEASED	MM	2:1				
	DRWN BY	DATE	TSOMEYA		2016/11/17		
	CHK'D BY	DATE	KTANAKA03		2016/12/01		
	APPR BY	DATE	TKUSUHARA01		2016/12/01		
DRAFT WHERE APPLICABLE MUST REMAIN WITHIN DIMENSIONS		DRAWING SIZE	THIRD ANGLE PROJECTION	PRODUCT CUSTOMER DRAWING			
A	REV	A3	3	SERIES		MATERIAL NUMBER	CUSTOMER
				505066	SEE CHART	GENERAL	
				DOCUMENT NUMBER		DOC TYPE	DOC PART
				5050660000		PSD	001
						SHEET NUMBER	
						2 OF 3	

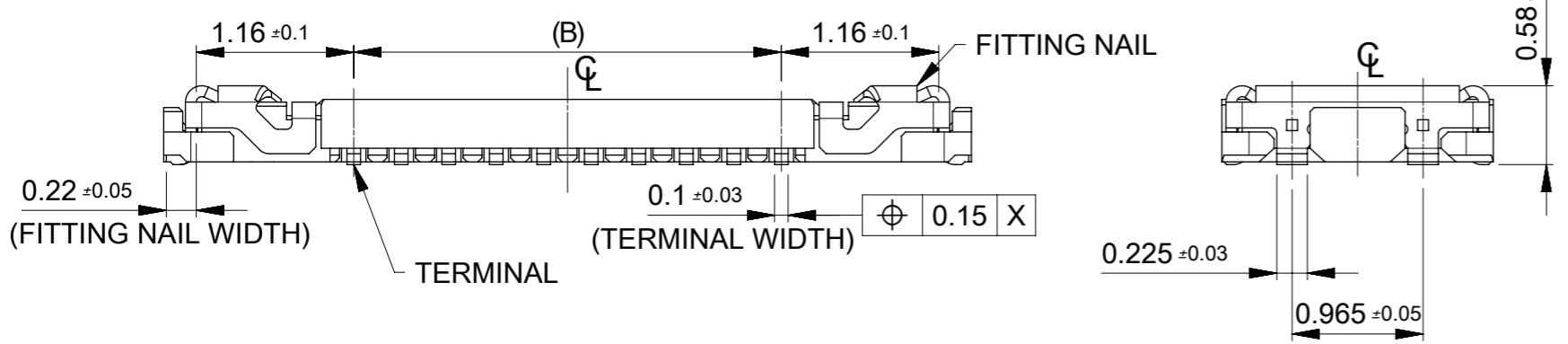
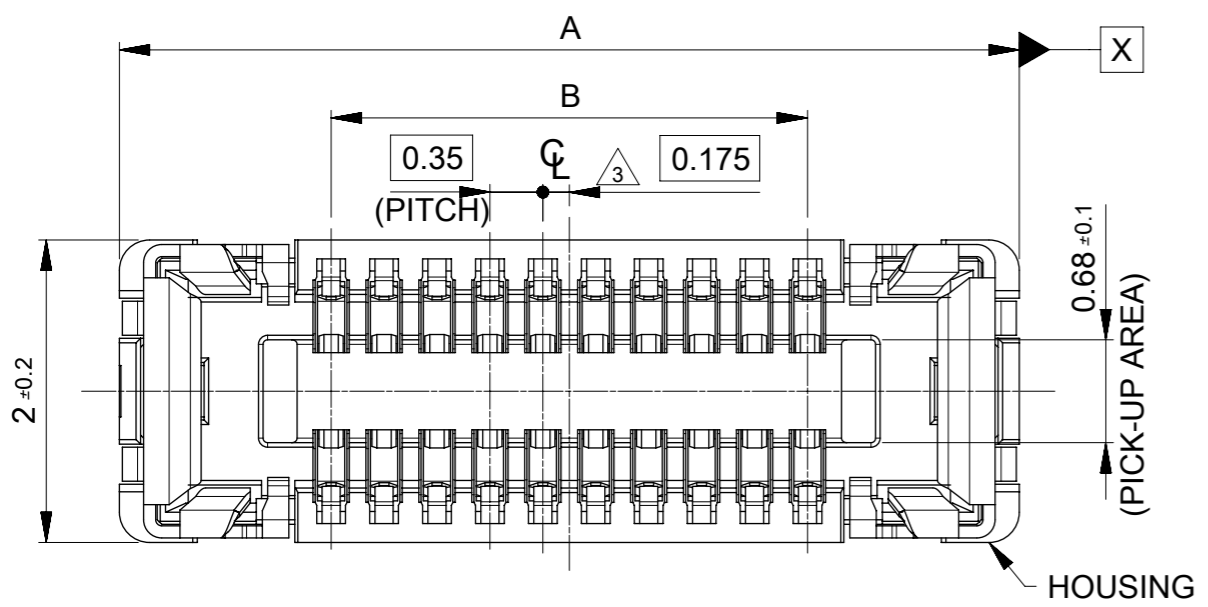


SECTION Y-Y

24	29.4	25.4	13.77	505066-6420	---	---	64	
			13.07	505066-6020	---	---	60	
			12.02	505066-5420	○	---	54	
			11.32	505066-5020	○	---	50	
			10.99	505066-4820	○	---	48	
			10.62	505066-4620	---	---	46	
			9.92	505066-4220	○	---	42	
			9.57	505066-4020	○	---	40	
			8.52	505066-3420	○	---	34	
キャリアテープ幅 CARRIER TAPE WIDTH		C	B	(A)	MATERIAL No.	HIGH VOL TOOL	LOW VOL TOOL	CIRCUIT
						SAMPLE PREPARATION		

THIS DRAWING CONTAINS INFORMATION THAT IS PROPRIETARY TO MOLEX ELECTRONIC TECHNOLOGIES, LLC AND SHOULD NOT BE USED WITHOUT WRITTEN PERMISSION

EC NO: 109660 DRWN: TSOMEYA CHK'D: KTANAKA03 APPR: TKUSUHARA01	2016/11/17	GENERAL TOLERANCES (UNLESS SPECIFIED) ANGULAR TOL ± 1.0 ° 4 PLACES ± 0.01 3 PLACES ± 0.03 2 PLACES ± 0.05 1 PLACE ± 0.1 0 PLACES ± 0.2	DIMENSION UNITS	SCALE				
	RELEASED		MM	2:1				
	2016/12/01		DRWN BY	DATE		0.35 BB CONN. H=0.6 SSB6 RP REC ASSY		
	2016/12/01		TSOMEYA	2016/11/17				
	2016/12/01		KTANAKA03	2016/12/01				
			CHK'D BY	DATE	PRODUCT CUSTOMER DRAWING			
			TKUSUHARA01	2016/12/01				
			APPR BY	DATE	SERIES	MATERIAL NUMBER	CUSTOMER	
			TKUSUHARA01	2016/12/01	505066	SEE CHART	GENERAL	
			DRAWING SIZE	THIRD ANGLE PROJECTION	DOCUMENT NUMBER	DOC TYPE	DOC PART	SHEET NUMBER
			A3		5050660000	PSD	001	3 OF 3



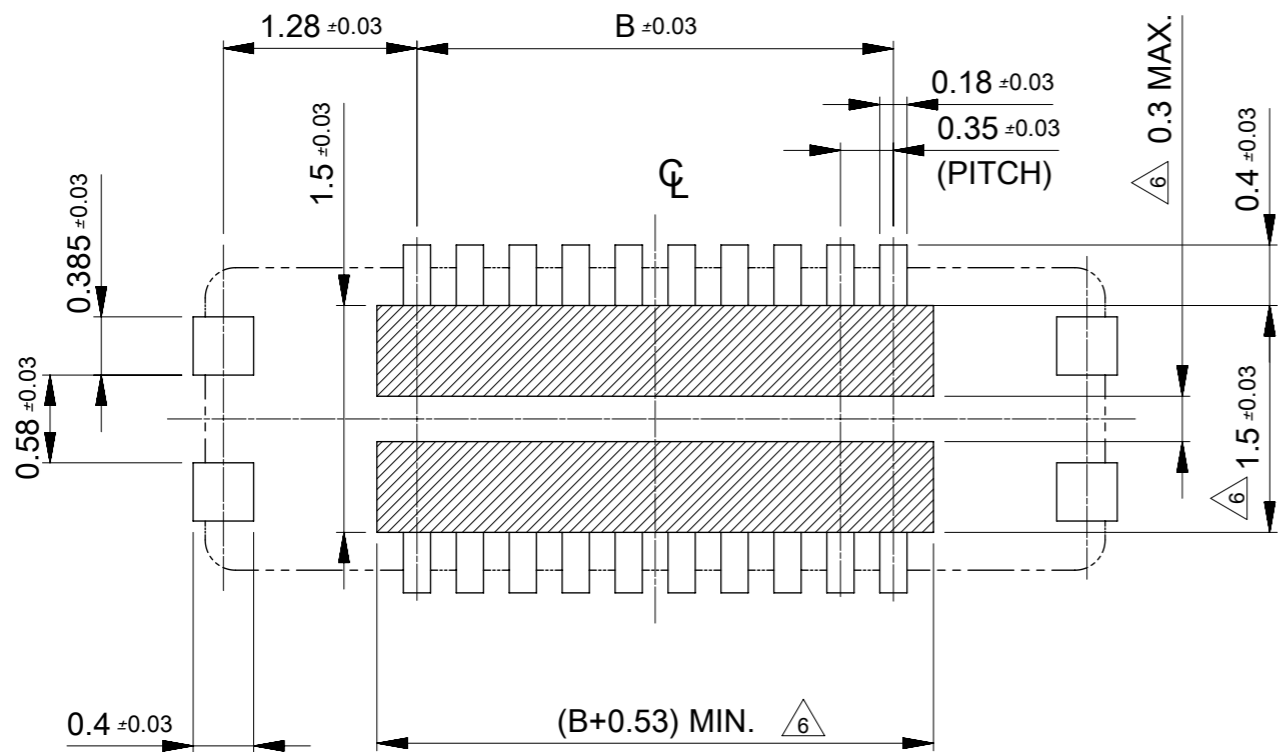
NOTES

- 1 MATERIAL
 WAFER: LIQUID CRYSTAL POLYMER UL94V-0 (COLOR: BLACK)
 TERMINAL: COPPER ALLOY
 FITTING NAIL: COPPER ALLOY
- 2 PLATING
 TERMINAL:
 CONTACT AREA: SEPARATED GOLD PLATING (0.1 MICROMETER MINIMUM).
 SOLDER TAIL AREA: SEPARATED GOLD PLATING.
 UNDERPLATE: NICKEL OVERALL.
 *DIVIDE INTO PARTS THE GOLD PLATING OF THE CONTACT AND THE TAIL PART BY THE NICKEL PLATING.
 FITTING NAIL:
 CONTACT AREA: SEPARATED GOLD PLATING (0.1 MICROMETER MINIMUM).
 SOLDER TAIL AREA: SEPARATED GOLD PLATING.
 UNDERPLATE: NICKEL OVERALL.
 *DIVIDE INTO PARTS THE GOLD PLATING OF THE CONTACT AND THE TAIL PART BY THE NICKEL PLATING.
 *EVEN THOUGH GOLD PLATING ON THE TOP SURFACE OF NAIL MIGHT BE THIN, NO FUNCTIONAL PROBLEM.
- 3 APPLY FOR (CIRCUIT/2)=EVEN.
- 4 MATE WITH : 505070-**10/505070-**20
- 5 TAIL AND FITTING NAIL COPLANARITY TO BE 0.08 MAXIMUM.
- 6 PROHIBITED AREA OF PATTERN WIRING AND SOLDER.
 (FOR EACH AREA, THE WIRING THAT TOUCHES ON THE SOLDER CAN BE ATTACHED, THEN COVERED WITH A FILM TO KEEP SOLDER OUT).
- 7 ELV and RoHS COMPLIANT.

11.90	14.70	505066-7020	---	---	70
10.85	13.65	505066-6420	---	---	64
10.15	12.95	505066-6020	---	---	60
9.80	12.60	505066-5820	---	---	58
9.10	11.90	505066-5420	○	---	54
8.40	11.20	505066-5020	○	---	50
8.05	10.85	505066-4820	○	---	48
7.70	10.50	505066-4620	---	---	46
7.00	9.80	505066-4220	○	---	42
6.65	9.45	505066-4020	○	---	40
6.30	9.10	505066-3820	---	---	38
5.60	8.40	505066-3420	○	---	34
4.90	7.70	505066-3020	○	---	30
3.85	6.65	505066-2420	○	---	24
3.50	6.30	505066-2220	○	---	22
3.15	5.95	505066-2020	○	---	20
2.80	5.60	505066-1820	---	---	18
2.45	5.25	505066-1620	○	---	16
2.10	4.90	505066-1420	○	---	14
1.75	4.55	505066-1220	○	---	12
1.40	4.20	505066-1020	○	---	10
1.05	3.85	505066-0820	---	○	8
0.70	3.50	505066-0620	○	---	6
B	A	EMBOSSED TAPE PACKAGE	HIGH VOL. TOOL	LOW VOL. TOOL	CIRCUIT
		ORDER NO.	SAMPLE PREPARATION ○ : TOOLED △ : WORK IN PROCESS --- : TOOLING TO BE CONFIRMED		
CONNECTOR SERIES No. : 505066-**09					

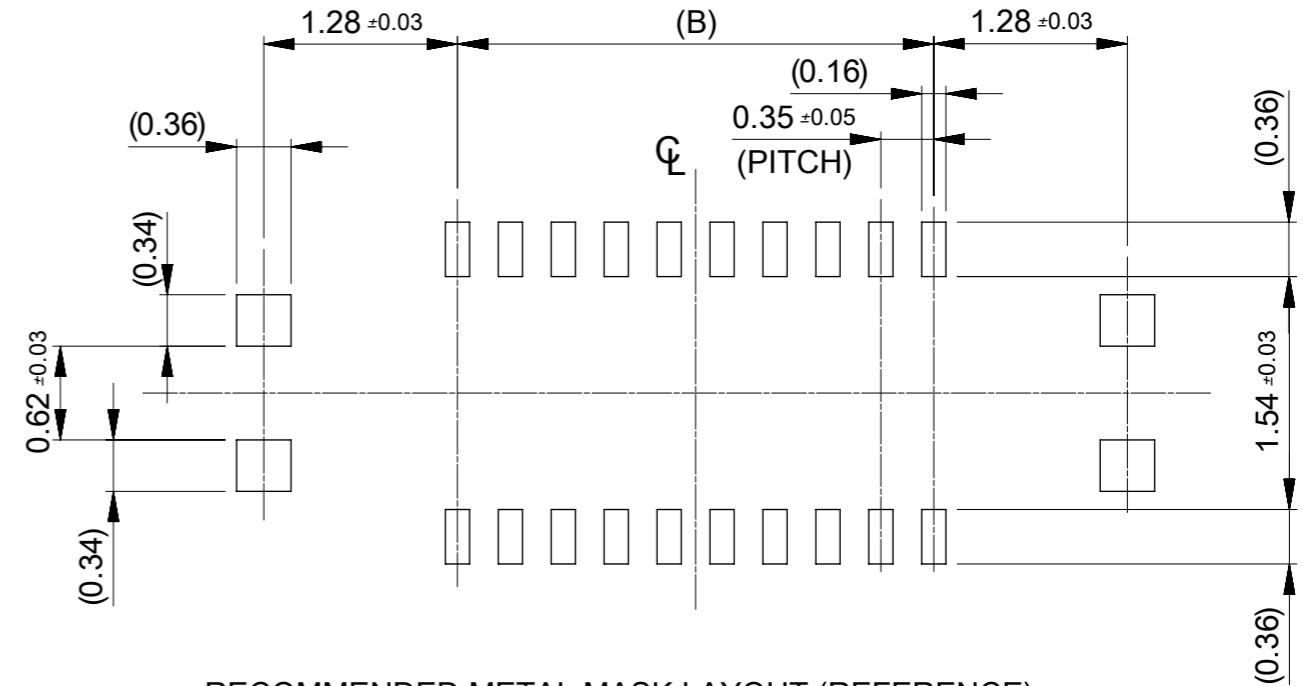
THIS DRAWING CONTAINS INFORMATION THAT IS PROPRIETARY TO MOLEX ELECTRONIC TECHNOLOGIES, LLC AND SHOULD NOT BE USED WITHOUT WRITTEN PERMISSION

REVISED	2016/12/06	DRWN BY	TSOMEYA	DATE	2016/06/21	molex	0.35 BB CONN. H=0.6 SSB6 RP REC ASSY				
	2016/12/06	CHK'D BY	KTANAKA03	DATE	2016/12/01						
	2016/12/06	APPR BY	TKUSUHARA01	DATE	2016/12/01						
	EC NO: 111141	DRWN: TSOMEYA	CHK'D: TASAKAWA	APPR: TKUSUHARA01			PRODUCT CUSTOMER DRAWING				
GENERAL TOLERANCES (UNLESS SPECIFIED)		DIMENSION UNITS	MM	SCALE	20:1	SERIES	MATERIAL NUMBER	CUSTOMER	DOCUMENT NUMBER		
ANGULAR TOL ± 1.0 °		DRAWING SIZE	A3	THIRD ANGLE PROJECTION	505066						
4 PLACES ± 0.001		DRAFT WHERE APPLICABLE MUST REMAIN WITHIN DIMENSIONS									
3 PLACES ± 0.003											
2 PLACES ± 0.03											
1 PLACE ± 0.1											
0 PLACES ± 0.2											



RECOMMENDED P.W. BOARD PATTERN LAYOUT (REFERENCE)

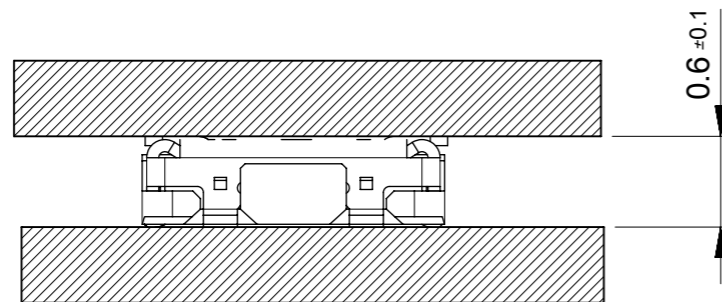
△ PROHIBITED AREA OF PATTERN WIRING AND SOLDER
 (FOR EACH AREA, THE WIRING THAT TOUCHES ON THE SOLDER CAN BE ATTACHED, THEN COVERED WITH A FILM TO KEEP SOLDER OUT)



RECOMMENDED METAL MASK LAYOUT (REFERENCE)

RECOMMENDED THICKNESS OF METAL MASK : t=0.08mm

RECOMMENDED OPEN APERTURE RATIO OF METAL MASK : 80%



MATED CONDITION

THIS DRAWING CONTAINS INFORMATION THAT IS PROPRIETARY TO MOLEX ELECTRONIC TECHNOLOGIES, LLC AND SHOULD NOT BE USED WITHOUT WRITTEN PERMISSION

REVISED	EC NO: 111141	2016/12/06	GENERAL TOLERANCES (UNLESS SPECIFIED)	DIMENSION UNITS	SCALE	molex®			
	DRWN: TSOMEYA	2016/12/06	ANGULAR TOL ± 1.0 °	MM	20:1				
	CHK'D: TASAKAWA	2016/12/06	4 PLACES ± 0.001	DRWN BY	DATE	PRODUCT CUSTOMER DRAWING			
	REV APPR: TKUSUHARA01		3 PLACES ± 0.003	TSOMEYA	2016/06/21				
			2 PLACES ± 0.03	KTANAKA03	2016/12/01	505066	SEE CHART	GENERAL	
		1 PLACE ± 0.1	TKUSUHARA01	2016/12/01					
		0 PLACES ± 0.2							
DRAFT WHERE APPLICABLE MUST REMAIN WITHIN DIMENSIONS				DRAWING SIZE	THIRD ANGLE PROJECTION				
				A3					
RELEASE STATUS	P1	RELEASE DATE	06.12.2016	09:16:40					