

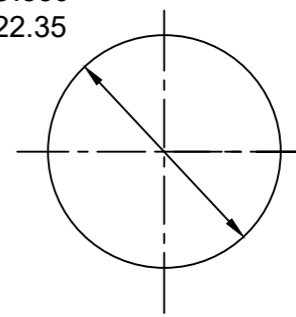
- NOTES:**
1. MATERIAL: AS NOTED
  2. FINISH: AS NOTED
  3. ELECTRICAL:
  - (B) VOLTAGE: 483V PER IEC60664  
600V PER UL2237  
CURRENT: 15A
  4. TEMP RATING: -20°TO +90°C
  5. PROTECTION: IP67 (WHEN MATED)
  6. COUPLING THREAD: 7/8-16UN
  - (B) 7. UL LISTED FILE: E258992
  8. ALL DIMS ARE FOR REFERENCE UNLESS NOTED OR TOLERANCED OTHERWISE

**PART NUMBER LEGEND**

1R4006A82M005G

FINISHED LENGTH:  
M005= 0.5 METER  
M010= 1 METER  
M100= 10 METER

Ø.880  
22.35



REF. KNOCKOUT HOLE

ITEM	DESCRIPTION	MATERIAL	FINISH
6	FLAG LABEL	VINYL	BLACK/YELLOW
5	POTTING MATERIAL	EPOXY	
4	WIRE, 14 AWG (UL1015) (B)	PVC INSULATION	SEE FACE VIEW
3	CONTACT PIN	COPPER ALLOY	GOLD PLATED
2	MALE INSERT	TPE (B)	BLACK
1	RECEPTACLE SHELL	ZINC DIE-CAST	BLACK

THIS DRAWING CONTAINS INFORMATION THAT IS PROPRIETARY TO MOLEX ELECTRONIC TECHNOLOGIES, LLC AND SHOULD NOT BE USED WITHOUT WRITTEN PERMISSION									
SYMBOLS		DIMENSION UNITS		SCALE		CURRENT REV DESC: WIRE WAS THHN, INSERT WAS PVC, IEC VOLTAGE WAS 320, 1.11 WAS 1.10, ADD 90 DEG F FOR KEY, ADD NOTE 7			
▽ = 0		INCH/MM		1:1		<b>molex</b> MINI-CHANGE RECEPTACLE MALE, 4P, 14 AWG 1/2 NPT PRODUCT CUSTOMER DRAWING			
▽ = 0		GENERAL TOLERANCES (UNLESS SPECIFIED)							
▽ = 0		mm		INCH					
▽ = 0		4 PLACES ±---		±---					
▽ = 0		3 PLACES ±---		±---					
▽ = 0		2 PLACES ±---		±---		EC NO: 626130 DRWN: RSTONE 2019/10/22 CHK'D: ALEON01 2019/10/24 APPR: BWOODMAN 2019/10/31			
▽ = 0		1 PLACE ±---		±---		INITIAL REVISION: DRWN: RSTONE 2017/01/09 APPR: BWOODMAN 2017/01/26			
□ = 0		0 PLACES ±---		±---		DOCUMENT NUMBER: SD-130066-073 DOC TYPE: PSD DOC PART: 001 REVISION: B			
■ = 0		ANGULAR TOL ± --- °		THIRD ANGLE PROJECTION		DRAWING: B-SIZE		SERIES: 130066	
▽ = 0		DRAFT WHERE APPLICABLE MUST REMAIN WITHIN DIMENSIONS		DRAWING		SERIES		MATERIAL NUMBER: GENERAL MARKET	