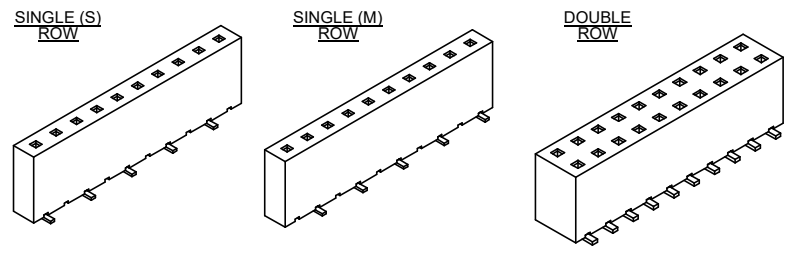
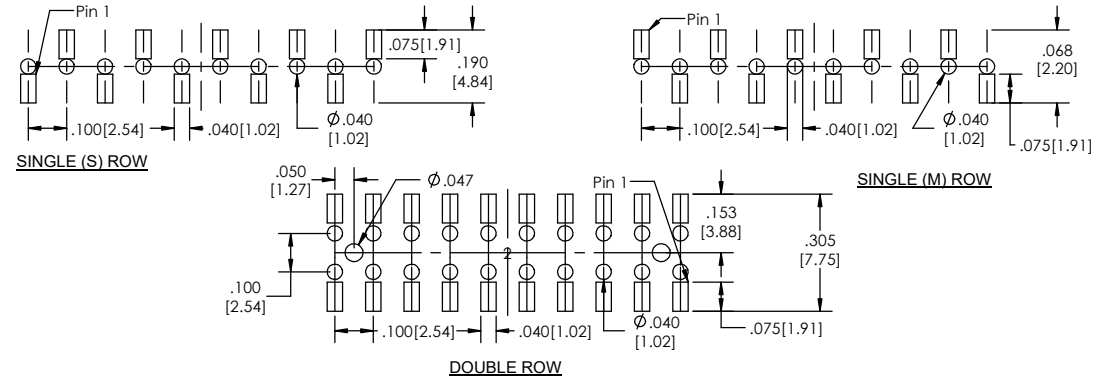


Recommended P.C. Board Layout
SCALE 4:1

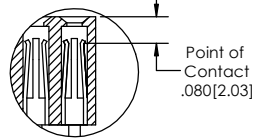
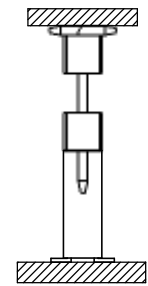


SMBC-1 **XX** - **X** - **XX** - **XX** - **V** - **XXX** - **X** - **XX** - **X** - **XX** - **LF**
(A) (B) (C) (D) (E) (F) (G) (H) (I) (J) (K)

- A. Pins Per Row - 2 through 40
- B. Row Specification - S= Single Row - D= Double Row
- C. Pin Option - .01= .197[5.00] Body Height - .02= .295[7.49] Body Height
- D. Plating Options - See Plating Options below
- E. Direction - V= Vertical
- F. Polarized Position - Leave blank if not needed - If required, specify empty pin position - e.g. 012 for Pin 12
- G. Footprint - S= pin 1 to the right - M= pin 1 to the left
- H. Packing Information - TB= Tube - TR= Tape and Reel - If left blank, packaging at MLE's discretion - Pad may be metal, mylar or plastic
- I. Pad - P= Plastic - K= Kapton - O= No Pad
- J. Alignment Pin (option only available for Double) - Leave blank if not needed - AP= With
- K. Lead Free

- Mates With:
- BSTC TSHCR
 - BSTCM TSHCRE
 - BSTCR TSHCRSM
 - BSTCRSM TSHR
 - BSTS TSHRE
 - LBSTCM TSHS
 - LTSHCR TSHSCM
 - LTSHCRE TSHSM
 - LTSHR ULTSHSM
 - LTSHRE ULTSHS
 - LTSHSM ULTSHS
 - TSHC ULTSHCR

APPLICATION

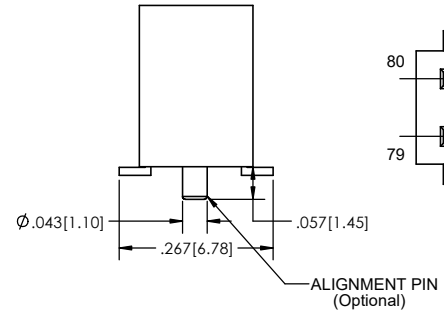
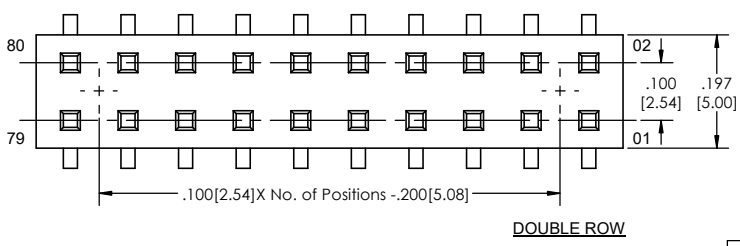
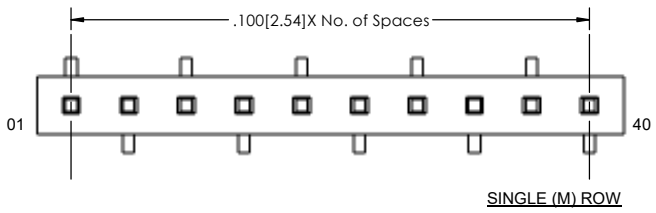
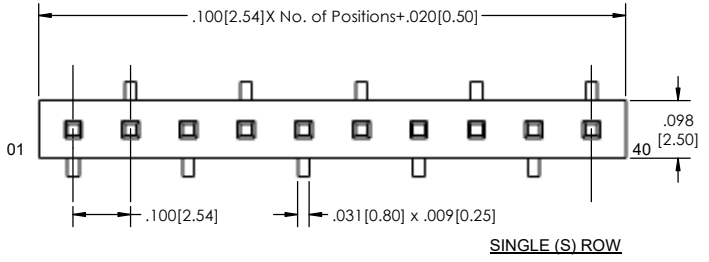
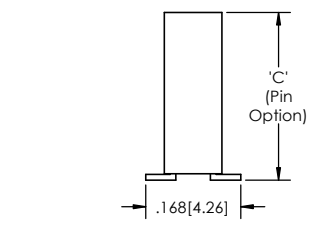


| Plating options | |
|-----------------|--|
| G | -10µ Gold on Contact Area/ Flash on Tail |
| T | -Matte Tin all Over |
| GT | -10µ Gold on Contact Area/ Matte Tin on Tail |
| H | -30µ Gold on Contact Area/ Matte Tin on Tail |
| F | -Gold Flash over Entire Pin |
| FT | -Gold Flash on Contact Area/ Matte Tin on Tail |

Specifications:
 Insertion Depth: .145[3.68] to .250[6.35]
 Insertion Force- Per Contact- H Plating:
 5oz. [1.39N] avg with .025[0.64mm] sq. pin
 Withdrawal Force- Per Contact- H Plating:
 3oz. [0.83N] avg with .025[0.64mm] sq. pin
 Current Rating: 3.0 Ampere
 Insulation Resistance: 1000M Ohms Min.
 Dielectric Withstanding: 600V AC
 Contact Resistance: 20M Ohms Max.
 Operation Temperature: -40°C to +105°C
 Max. Process Temperature
 Peak: 260°C up to 20 secs.
 Process: 230°C up to 60 secs.
 Wave: 260°C up to 6 secs.
 Reflow: 260°C up to 10 secs.
 Manual Solder: 350°C up to 5 secs.

Materials:
 Contact Material: Phosphor Bronze
 Insulator Material: Nylon 6T
 Plating: Au or Sn over 50µ" (1.27) Ni
 Tails may be clipped to achieve specific dimensions.

Products cut to specific sizes are uncancellable/ nonreturnable.
 Parts are subject to change without notice.



PROPRIETARY AND CONFIDENTIAL
 THE INFORMATION CONTAINED IN THIS DRAWING IS THE SOLE PROPERTY OF Major League Electronics. ANY REPRODUCTION IN PART OR AS A WHOLE WITHOUT THE WRITTEN PERMISSION OF Major League Electronics IS PROHIBITED.

| | | | | |
|--------------------------------------|--------------|-------------------------------|----|--------------|
| UNLESS OTHERWISE SPECIFIED: | | NAME | | DATE |
| DIMENSIONS ARE IN INCHES | | DRAWN | EW | 10/14/15 |
| TOLERANCES: | | CHECKED | GW | 10/14/15 |
| ONE DECIMAL ±.100 | | ENG APPR. | | |
| TWO DECIMAL ±.100 | | MFG APPR. | | |
| THREE DECIMAL ±.005 | | ADDRESS: | | |
| FOUR DECIMAL ±.002 | | 2533 Centennial Blvd. | | |
| INTERPRET GEOMETRIC TOLERANCING PER: | MATERIAL: | Jeffersonville, In 47130 | | |
| FINISH: | APPLICATION: | Phone: 812-670-4174 | | |
| DO NOT SCALE DRAWING | | Fax: 812-670-4175 | | |
| | | E-Mail: mle@mlelectronics.com | | |
| TITLE: SMBC-1-V SERIES | | SIZE DWG. NO. | | REV |
| C | | E | | |
| SCALE 6:1 | | | | SHEET 1 OF 1 |