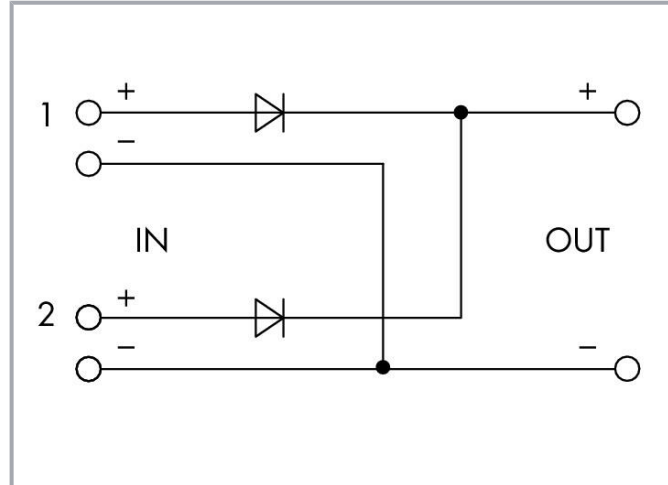


## Data sheet | Item number: 787-785

Redundancy Module; 2 x 9 ... 54 VDC input voltage; 2 x 40 A input current; 9–54 VDC output voltage; 76 A output current



[www.wago.com/787-785](http://www.wago.com/787-785)



Similar to illustration

## Item description

### Features:

- Redundancy module with two inputs decouples two power supplies.
- For redundant and fail-safe power supply
- With LED for input voltage monitoring on site and remotely

## Data

### Technical data

### Input

Nominal input voltage $U_{i \text{ nom}}$	2 x DC 24 V
Input voltage range	2 x DC 9 ... 54 V
Nominal mains frequency range	0 Hz

Subject to changes. Please also observe the further product documentation!

WAGO GmbH & Co. KG  
Hansastr. 27  
32423 Minden  
Phone: +49571 887-0 | Fax: +49571 887-169  
Email: [info.de@wago.com](mailto:info.de@wago.com) | Web: [www.wago.com](http://www.wago.com)

Do you have any questions about our products?  
We are always happy to take your call at +49 (571) 887-44222.



Input current $I_i$	$\leq 40$ A (per path); $\leq 76$ A (in total)
---------------------	--

## Output

Nominal output voltage $U_{o\text{ nom}}$	DC 24 V
Output voltage range	DC 9 ... 54 V ( $U_e$ – voltage drop)
Voltage drop	$\leq 500$ mV (Input/output)
Nominal output current $I_{o\text{ nom}}$	40 A (redundancy operation); 65 A (parallel operation [UL]); 76 A (parallel operation)
Nominal output power	1824 W

## Signaling and Communication

Signaling	1 x IN1 LED (green) 1 x IN2 LED (green) 1 x OUT LED (green)
Operation status indicator	2 x Green LED ( $U_i > 7.5$ VDC) 1 x Green LED ( $U_o > 7.5$ VDC)

## Efficiency/power losses

Power loss $P_i$	$\leq 38$ W (nominal load)
Efficiency (typ.)	97 %

## Safety and protection

Protection class	III
Protection type	IP20; per EN 60529
Pollution degree	2
Overvoltage protection; secondary	No
Short-circuit-protected	No
Open-circuit-proof	Yes
Parallel operation	Yes
Series operation	No
MTBF	$> 10$ million h (per IEC 61709)

## Connection data

Connection type 1	Input/output
Connection technology	Push-in CAGE CLAMP®

Subject to changes. Please also observe the further product documentation!



WAGO connector	WAGO 2716 Series
Solid conductor	1.5 ... 16 mm <sup>2</sup> / 16 ... 6 AWG
Fine-stranded conductor	1.5 ... 16 mm <sup>2</sup> / 16 ... 6 AWG
Strip length	12 ... 13 mm / 0.47 ... 0.51 inches

### Physical data

Width	83 mm / 3.268 inches
Height	130 mm / 5.118 inches
Depth from upper-edge of DIN-rail	153 mm / 6.024 inches

### Mechanical Data

Mounting type	DIN-35 rail
---------------	-------------

### Material Data

Weight	31.1 g
--------	--------

### Environmental requirements

Ambient temperature (operation)	-25 ... +70 °C
Ambient temperature (storage)	-40 ... +85 °C
Relative humidity	95% (no condensation permissible)
Derating	-2.66 %/K (55 °C < T <sub>u</sub> ≤ 70 °C)
Resistance to shock and vibration	Shock: 15g (per EN 60068-2-27)

### Standards and specifications

Conformity marking	CE
Standards/specifications	UL 508

### Commercial data

eCl@ss 10.0	27-04-07-01
eCl@ss 9.0	27-04-07-01
ETIM 8.0	EC002540
ETIM 7.0	EC002540
PU (SPU)	1 pcs
Packaging type	Box
Country of origin	CN

Subject to changes. Please also observe the further product documentation!

WAGO GmbH & Co. KG  
 Hansastr. 27  
 32423 Minden  
 Phone: +49571 887-0 | Fax: +49571 887-169  
 Email: [info.de@wago.com](mailto:info.de@wago.com) | Web: [www.wago.com](http://www.wago.com)

Do you have any questions about our products?  
 We are always happy to take your call at +49 (571) 887-44222.


GTIN	4055143036306
Customs tariff number	85044095900

## Environmental Product Compliance

RoHS Compliance Status	Compliant,With Exemption
RoHS Exemption	6(c) 7(a) 7(c)-I 7(c)-II
SCIP notification number (Bulgaria)	75cbc6ca-380f-491f-9b29-12c9e6632df9
SCIP notification number (Czech Republic)	4969e245-4a19-46ff-9f47-4c2740f21a13








## Approvals / Certificates

### General approvals

Logo	Approval	Additional Approval Text	Certificate name
	UL Underwriters Laboratories Inc.	UL 508	E255817

## Optional accessories

### Ferrule

Ferrule		
	<b>Item no.: 216-203</b> Ferrule; Sleeve for 1 mm <sup>2</sup> / AWG 18; insulated; electro-tin plated; red	<a href="http://www.wago.com/216-203">www.wago.com/216-203</a>
	<b>Item no.: 216-206</b> Ferrule; Sleeve for 2.5 mm <sup>2</sup> / AWG 14; insulated; electro-tin plated; blue	<a href="http://www.wago.com/216-206">www.wago.com/216-206</a>
	<b>Item no.: 216-207</b> Ferrule; Sleeve for 4 mm <sup>2</sup> / AWG 12; insulated; electro-tin plated; gray	<a href="http://www.wago.com/216-207">www.wago.com/216-207</a>
	<b>Item no.: 216-202</b> Ferrule; Sleeve for 0.75 mm <sup>2</sup> / 18 AWG; insulated; electro-tin plated; gray	<a href="http://www.wago.com/216-202">www.wago.com/216-202</a>
	<b>Item no.: 216-204</b> Ferrule; Sleeve for 1.5 mm <sup>2</sup> / AWG 16; insulated; electro-tin plated; black	<a href="http://www.wago.com/216-204">www.wago.com/216-204</a>
	<b>Item no.: 216-209</b> Ferrule; Sleeve for 10 mm <sup>2</sup> / AWG 8; insulated; electro-tin plated; red	<a href="http://www.wago.com/216-209">www.wago.com/216-209</a>
	<b>Item no.: 216-205</b> Ferrule; Sleeve for 2.08 mm <sup>2</sup> / AWG 14; insulated; electro-tin plated; yellow	<a href="http://www.wago.com/216-205">www.wago.com/216-205</a>

Subject to changes. Please also observe the further product documentation!

	<b>Item no.: 216-208</b> Ferrule; Sleeve for 6 mm <sup>2</sup> / AWG 10; insulated; electro-tin plated; electrolytic copper; gastight crimped; acc. to DIN 46228, Part 4/09.90; yellow	<a href="http://www.wago.com/216-208">www.wago.com/216-208</a>
	<b>Item no.: 216-201</b> Ferrule; Sleeve for 0.5 mm <sup>2</sup> / 20 AWG; insulated; electro-tin plated; white	<a href="http://www.wago.com/216-201">www.wago.com/216-201</a>
	<b>Item no.: 216-224</b> Ferrule; Sleeve for 1.5 mm <sup>2</sup> / AWG 16; insulated; electro-tin plated; black	<a href="http://www.wago.com/216-224">www.wago.com/216-224</a>
	<b>Item no.: 216-244</b> Ferrule; Sleeve for 1.5 mm <sup>2</sup> / AWG 16; insulated; electro-tin plated; electrolytic copper; gastight crimped; acc. to DIN 46228, Part 4/09.90; black	<a href="http://www.wago.com/216-244">www.wago.com/216-244</a>
	<b>Item no.: 216-246</b> Ferrule; Sleeve for 2.5 mm <sup>2</sup> / AWG 14; insulated; electro-tin plated; electrolytic copper; gastight crimped; acc. to DIN 46228, Part 4/09.90; blue	<a href="http://www.wago.com/216-246">www.wago.com/216-246</a>
	<b>Item no.: 216-266</b> Ferrule; Sleeve for 2.5 mm <sup>2</sup> / AWG 14; insulated; electro-tin plated; electrolytic copper; gastight crimped; acc. to DIN 46228, Part 4/09.90; blue	<a href="http://www.wago.com/216-266">www.wago.com/216-266</a>
	<b>Item no.: 216-264</b> Ferrule; Sleeve for 1.5 mm <sup>2</sup> / AWG 16; insulated; electro-tin plated; electrolytic copper; gastight crimped; acc. to DIN 46228, Part 4/09.90; black	<a href="http://www.wago.com/216-264">www.wago.com/216-264</a>
	<b>Item no.: 216-284</b> Ferrule; Sleeve for 1.5 mm <sup>2</sup> / AWG 16; insulated; electro-tin plated; electrolytic copper; gastight crimped; acc. to DIN 46228, Part 4/09.90; black	<a href="http://www.wago.com/216-284">www.wago.com/216-284</a>
	<b>Item no.: 216-286</b> Ferrule; Sleeve for 2.5 mm <sup>2</sup> / AWG 14; insulated; electro-tin plated; electrolytic copper; gastight crimped; acc. to DIN 46228, Part 4/09.90; blue	<a href="http://www.wago.com/216-286">www.wago.com/216-286</a>
	<b>Item no.: 216-287</b> Ferrule; Sleeve for 4 mm <sup>2</sup> / AWG 12; insulated; electro-tin plated; electrolytic copper; gastight crimped; acc. to DIN 46228, Part 4/09.90; gray	<a href="http://www.wago.com/216-287">www.wago.com/216-287</a>
	<b>Item no.: 216-288</b> Ferrule; Sleeve for 6 mm <sup>2</sup> / AWG 10; insulated; electro-tin plated; electrolytic copper; gastight crimped; acc. to DIN 46228, Part 4/09.90; yellow	<a href="http://www.wago.com/216-288">www.wago.com/216-288</a>
	<b>Item no.: 216-289</b> Ferrule; Sleeve for 10 mm <sup>2</sup> / AWG 8; insulated; electro-tin plated; electrolytic copper; gastight crimped; acc. to DIN 46228, Part 4/09.90; red	<a href="http://www.wago.com/216-289">www.wago.com/216-289</a>
	<b>Item no.: 216-267</b> Ferrule; Sleeve for 4 mm <sup>2</sup> / AWG 12; insulated; electro-tin plated; electrolytic copper; gastight crimped; acc. to DIN 46228, Part 4/09.90; gray	<a href="http://www.wago.com/216-267">www.wago.com/216-267</a>

## Downloads

### Documentation

#### Bid Text

787-785	2019 Jul 15	docx	Download
docx - Datei		22.1 kB	

Subject to changes. Please also observe the further product documentation!

WAGO GmbH & Co. KG  
Hansastr. 27  
32423 Minden  
Phone: +49571 887-0 | Fax: +49571 887-169  
Email: [info.de@wago.com](mailto:info.de@wago.com) | Web: [www.wago.com](http://www.wago.com)

Do you have any questions about our products?  
We are always happy to take your call at +49 (571) 887-44222.



787-785 X81 - Datei	2019 Jul 15	xml 5.7 kB	Download
------------------------	-------------	---------------	----------

**Instruction Leaflet**

Diode Redundancy Module DC 24 V, 40 A	V 1.2.0 2021 Sep 29	pdf 3.9 MB	Download
--	------------------------	---------------	----------

**Additional Information**

Disposal and Recycling Electrical and electronic equipment, Batteries, Packaging	V 1.1.0 2022 Aug 18	pdf 2.2 MB	Download
---	------------------------	---------------	----------

**CAD/CAE-Data**

**CAD data**

2D/3D Models 787-785		URL	Download
----------------------	--	-----	----------

**CAE data**

EPLAN Data Portal 787-785		URL	Download
---------------------------	--	-----	----------

WSCAD Universe 787-785		URL	Download
------------------------	--	-----	----------

ZUKEN Portal 787-785		URL	Download
----------------------	--	-----	----------

**Environmental Product Compliance**

**Compliance Search**

Environmental Product Compliance 787-785 Redundancy Module; 2 x 9 ... 54 VDC input voltage; 2 x 40 A input current; 9-54 VDC output voltage; 76 A output current		URL	Download
---	--	-----	----------

**Installation Notes**

Subject to changes. Please also observe the further product documentation!