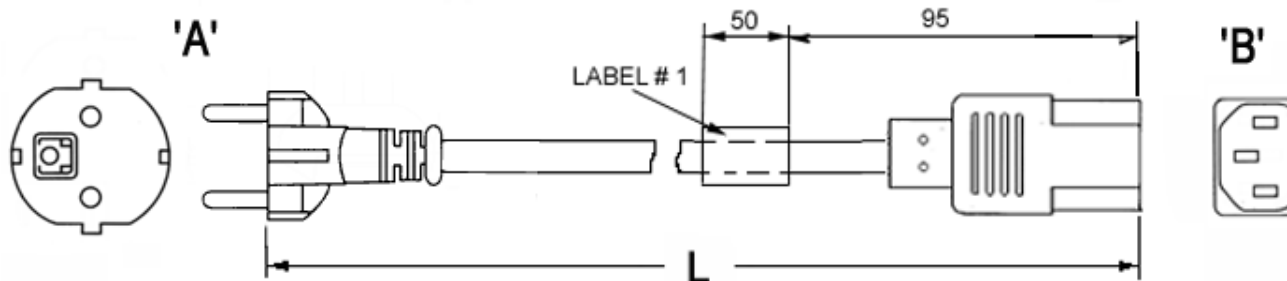


PROPRIETARY INFORMATION:  
 PROPRIETARY OF GLOBTEK, INC. ANY REPRODUCTION, DISCLOSURE OR  
 USE OF THIS DRAWING, IN WHOLE OR IN PART, IS HEREBY  
 PROHIBITED EXCEPT AS SPECIFIED IN WRITING BY GLOBTEK,INC.

| REVISION |                 | DATE     | APPROVED |
|----------|-----------------|----------|----------|
| REV      | DESCRIPTION     |          |          |
| A        | INITIAL RELEASE | 02/07/02 | BS       |
| B        | REDRAWN         | 04/22/03 | BS       |

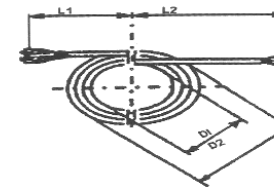
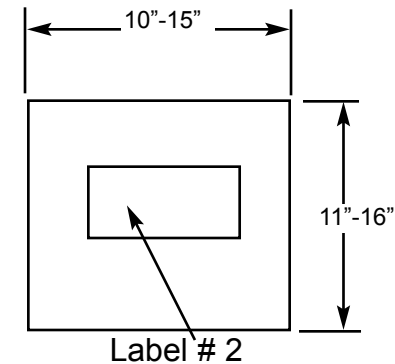


**GENERAL SPECIFICATIONS:**

RATING: 10A / 250V AC  
 CABLE TYPE / SIZE: H05VVVF, 3 x 1.0 mm<sup>2</sup>  
 TEMPERATURE RATING: 70° C  
 CONDUCTOR COLORS: BLUE / BROWN / GRN-YEL  
 CABLE JACKET COLOR: BLACK  
 OVERALL LENGTH (L): 3700 ± 20 mm ( 12 Ft )  
 CABLE OUTER DIAMETER: 7.1 ± 0.2 mm  
 END 'A' TERMINATION: STRAIGHT TYPE CEE7/16  
 END 'B' TERMINATION: IEC 320 / C13  
 APPROVALS PLUG: VDE, N, S, D, FI, KEMA, UTE, CEBC, OVE, IMQ  
 APPROVALS CABLE: VDE, N, S, D, FI, KEMA, SEV, CEBC, OVE,  
 APPROVALS CONNECTOR: VDE, N, S, D, FI, KEMA, UTE, CEBC, OVE, IMQ, ASEV

**PACKING:**  
 COILED

| L1 (A End ) | L2 (B End) | D1 / D2      |
|-------------|------------|--------------|
| 0           | 0          | 10 / 15 inch |



**NOTES:**

1. CORD, PLUG AND CONNECTOR MUST BE MARKED WITH APPROVAL SYMBOLS OR FILE NUMBER(S).



2. SAFETY TESTING:

- ALL CORDSETS MUST BE IN ACCORDANCE WITH THE FOLLOWING REQUIREMENTS:
- A. MAXIMUM L-N TO EARTH LEAKAGE CURRENT AT 264 VAC IS 40 µA
  - B. MAXIMUM GROUND IMPEDANCE AT 30A, 12-VAC IS 0.1ohms
  - C. 1500VAC WILL DIELECTRIC WITHSTAND.
  - D. TEST REPORT WILL ACCOMPANY EACH SHIPMENT.

**NOTE:**

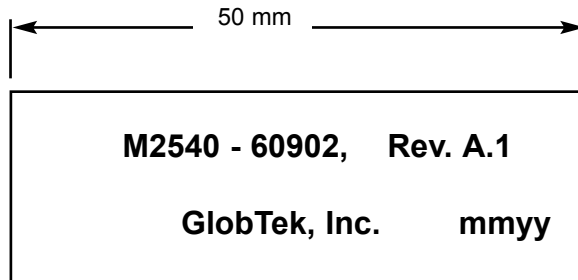
CORDSETS ARE TO BE COILED (10" TO 15" DIAMETER )AND INDIVIDUALLY PACKAGED INTO HEAT-SEALED BAGS.

| DASH NO.                | PART NO        | REV.   | DESCRIPTION               | NOTES   |
|-------------------------|----------------|--|---------------------------|---|
| <b>TABULATION BLOCK</b> |                |  |                           |   |
| REV.                    | B              | B  |                           |   |
| SHEET                   | 1              | 2  |                           |   |
| INIT.BY: BS             | DATE: 04/22/03 | TOLERANCES:<br>DECIMALS ANGULAR<br>.xx +/- 0.1 +/- 1°<br>.xxx +/- .005 |                           | <b>GlobTek, Inc.</b><br>www.globtek.com<br>186 Veterans Dr. Northvale, NJ 07647<br>Tel. 201-784-1000 Fax 201.784.0111 |
| DRAWN: NF               | DATE: 04/22/03 | MILLIMETERS ANGULAR<br>.xx +/- 0.3 +/- 1°<br>.xxx +/- .013             | FSCN No.: SIZE<br>G, CC A |   |
| APRVD: BS               | DATE: 04/22/03 | SCALE: NONE  | PART NO: 23144273M6701-1  | REV. B<br>SHEET 1/2   |

PROPRIETARY INFORMATION:  
 PROPRIETARY OF GLOBTEK, INC. ANY REPRODUCTION, DISCLOSURE OR  
 USE OF THIS DRAWING, IN WHOLE OR IN PART, IS HEREBY  
 PROHIBITED EXCEPT AS SPECIFIED IN WRITING BY GLOBTEK,INC.

| REVISION |                 |          |          |
|----------|-----------------|----------|----------|
| REV      | DESCRIPTION     | DATE     | APPROVED |
| A        | INITIAL RELEASE | 02/07/02 | BS       |
| B        | REDRAWN         | 04/22/03 | BS       |

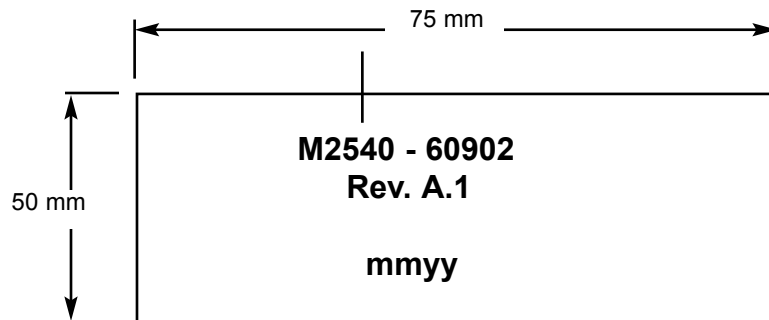
**LABEL # 1**




NOTES:

1. BLACK PRINTING ON WHITE LABEL.
2. "mmyy" - MONTH AND YEAR OF MANUFACTURE.
3. NEAR EDGE OF LABEL IS LOCATED 95 mm AWAY FROM END OF THE FEMALE CONNECTOR.

**LABEL # 2**



| DASH NO.                | PART NO  | REV.        | DESCRIPTION   | NOTES   |
|-------------------------|----------|-------------|---|---|
| <b>TABULATION BLOCK</b> |          |             |   |   |
| REV.                    | C        | C           | <b>TOLERANCES:</b><br>DECIMALS ANGULAR<br>.xx +/- 0.1 +/- 1°<br>.xxx +/- .005 |  <b>GlobTek, Inc.</b> 186 Veterans Dr. Northvale, NJ 07647<br>www.globtek.com Tel. 201-784-1000 Fax 201.784.0111 |
| SHEET                   | 1        | 2           |   |   |
| INIT.BY: BS             | DATE:    | 04/22/03    |   | DWG TITLE: EUROPEAN DETACHABLE CORDSET  |
| DRAWN: NF               | DATE:    | FSCN No.:   | SIZE  | REV.  |
|                         | 04/22/03 | G, CC       | A   | B   |
| APRVD: BS               | DATE:    | SCALE: NONE | PART NO: <b>23144273M6F701-1</b>  | SHEET 2/2   |
|                         | 04/22/03 |             |   |   |