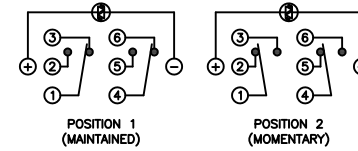


**SCHEMATIC**

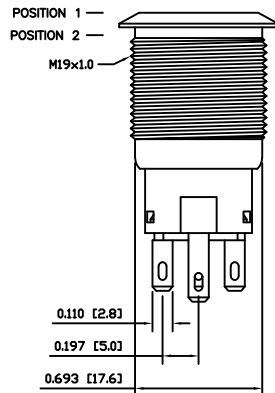
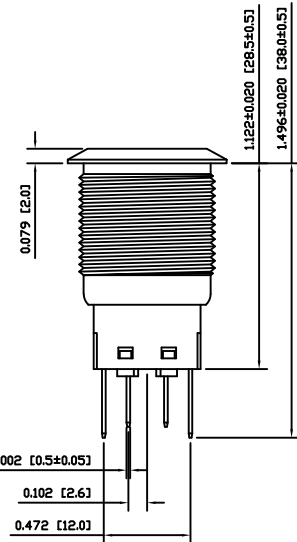


**SPECIFICATIONS**

- FUNCTION:  
2P2T ON-(ON)
- RATING:  
2A 24VDC
- ILLUMINATION VOLTAGE:  
2.8V 20mA
- CONTACT RESISTANCE:  
Initial: 50mΩ Max. at 1A 12VDC
- INSULATION RESISTANCE:  
1,000MΩ Min. at 500VDC
- DIELECTRIC STRENGTH:  
2,000VAC Min. for 1 Minute
- ELECTRICAL LIFE:  
50,000 Cycles
- MECHANICAL LIFE:  
1,000,000 Cycles
- TEMPERATURE:  
Operating: -20°C to 70°C
- INGRESS PROTECTION:  
IP65
- APPROVALS:  
**RoHS**  
COMPLIANT

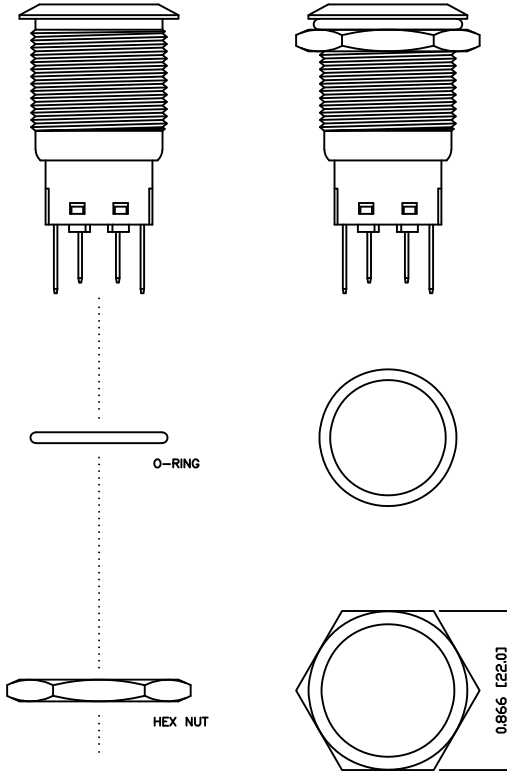
A

A



POSITION 1 —  
POSITION 2 —

M19x1.0



**EXPLODED VIEW**

**ASSEMBLED VIEW**

**MATERIALS**

- BUSHING:  
Stainless Steel (304)
- BASE:  
Polycarbonate (PC)  
Polybutylene Terephthalate (PBT), UL94 V-2
- ACTUATOR:  
Stainless Steel (304)  
Polycarbonate (PC)
- HARDWARE:  
Nickel Plated Brass (H59)
- SEALING:  
Silicone Rubber
- INNER ASSEMBLY:  
Polyoxymethylene (POM)  
Phosphor Bronze
- SPRING:  
Spring Steel
- CONTACTS:  
Silver/Cadmium Oxide (AgCdO)
- TERMINALS:  
Silver Plated Brass (H62)  
Silver Plated Phosphor Bronze
- O-RING:  
Silicone Rubber

**COLORS AND FINISH**

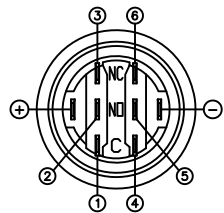
- BEZEL:  
Stainless Steel  
Machine Finish
- ACTUATOR:  
Stainless Steel  
Machine Finish
- ILLUMINATION:  
Blue (Forward)  
Blue (Reverse)
- MARKING:  
None

B

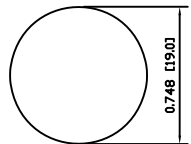
B

C

C



**SUGGESTED PANEL CUTOUT**



MAXIMUM PANEL THICKNESS: 0.433 [11.0mm]

D

D

|                |      |          |     |
|----------------|------|----------|-----|
| BODY           | A    | 09/07/24 | CAB |
| COLORS         | A    | 09/07/24 | CAB |
| MATERIALS      | B    | 09/10/16 | CAB |
| SPECIFICATIONS | A    | 09/07/27 | CAB |
| REFERENCE      | REV. | DATE     | BY  |

THE INFORMATION CONTAINED IN THIS DOCUMENT IS PROPRIETARY TO E-SWITCH AND IS NOT TO BE COPIED OR TRANSFERRED

|      |   |          |          |          |
|------|---|----------|----------|----------|
| C    | UPDATED RATING TO 2A @ 24VDC              | 23804    | 10/15/18 | MJR      |
| B    | CORRECTED TERMINAL MATERIAL AND TERMINALS | PCRD0167 | 09/10/21 | CAB      |
| A    | INITIAL RELEASE                           | PCRD0051 | 09/08/05 | CAB      |
| REV. | DESCRIPTION                               | PCR      | DATE     | DRAWN BY |

|                      |            |
|----------------------|------------|
| DIMENSIONS           |            |
| INCHES [MILLIMETERS] |            |
| GENERAL TOLERANCES   |            |
| ±0.008 [±0.2] / ±1'  |            |
| SCALE                | PROJECTION |
| DRAWING NOT TO SCALE | 1:1        |

**PV4F2HOSS-341**

|                                   |                          |               |
|-----------------------------------|--------------------------|---------------|
| DRAWING NUMBER<br>52-PV4F2HOSS341 | DATE<br>OCTOBER 21, 2009 | REVISION<br>C |
|-----------------------------------|--------------------------|---------------|