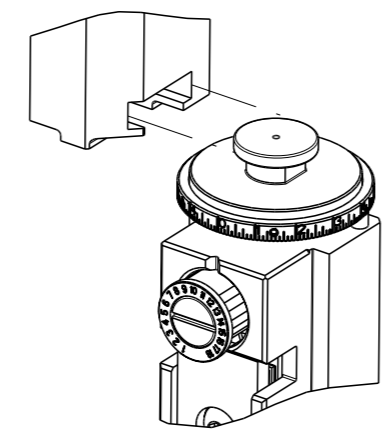


| PART NUMBER | REVISION | DESCRIPTION                      | FEED TYPE  |
|-------------|----------|----------------------------------|------------|
| 2266064-1   | C        | FINE CRIMP HEIGHT ADJUST         | MECHANICAL |
| 2266064-2   | C        | FINE CRIMP HEIGHT ADJUST         | PNEUMATIC  |
| 7-2266064-1 | C        | MECHANICAL AND CRIMP TOOLING KIT | MECHANICAL |
| 7-2266064-2 | C        | PNEUMATIC AND CRIMP TOOLING KIT  | PNEUMATIC  |
| 7-2266064-7 | A        | CRIMP TOOLING KIT                | -          |

ATLANTIC VERSION TERMINATOR INTERFACE ADAPTER



| APPLICATOR DATA |                |      |
|-----------------|----------------|------|
| CRIMP           | SIZE           | TYPE |
| WIRE            | 2.44 mm [.096] | F    |
| INSUL           | 3.76 mm [.148] | O    |

APPLICATOR INSTRUCTIONS 408-35042

| TERMINAL DATA: SUMITOMO TERMINAL SUMITOMO CRIMP SPECIFICATION |   |
|---|---|
| TERMINAL NAME: DLO90 SEALED TERMINAL, FEMALE                  |   |
| WIRE STRIP LENGTH<br>4.50-5.26 mm [.177-.207 IN]              | INSULATION DIAMETER RANGE<br>Ø3.40-3.70 mm [.134-.146 IN] |
| TERMINAL APPLICATION SPECIFICATION                            | SUMITOMO SPEC   |

| TERMINALS APPLIED |                   |           |               | SEAL INSULATION DIAMETER RANGE |
|-------------------|-------------------|-----------|---------------|--------------------------------|
| TE TERMINAL       | SUMITOMO TERMINAL | TE SEAL   | SUMITOMO SEAL |                                |
| 1949148-1         | 8100-1428         | 1949636-1 | 7165-0119     | Ø2.0mm-2.9mm                   |

| WIRE SIZE | CRIMP HEIGHT mm [INCH]      | CRIMP HEIGHT REFERENCE SETTING |
|-----------|-----------------------------|--------------------------------|
| 2.00mm2   | 1.55+/-0.05 [1.061+/-0.002] | 5.0                            |
| 1.50mm2   | 1.40+/-0.05 [1.055+/-0.002] | 6.6                            |
| 1.25mm2   | 1.35+/-0.05 [1.053+/-0.002] | 7.3                            |

- 1. RECOMMENDED SPARE PARTS
- 2. REFER TO SUPPLIED INSTRUCTION SHEET FOR CLEANING, LUBRICATION AND STORAGE OF APPLICATOR.
- 3. APPLY PART NUMBER 2-23419-6 LOCTITE TO THREADS OF ITEM 242.
- 4. CRIMP HEIGHT REFERENCE SETTING WAS THE SETTING USED WHEN THE APPLICATOR WAS QUALIFIED AT THE FACTORY. ADJUSTMENT MAY BE NECESSARY WHEN RUNNING APPLICATOR IN THE FIELD.
- 5. APPLY TORO-SEAL IN ALLEN SOCKET TO FILL HOLE AFTER FLAT HD HAS BEEN ADJUSTED TO CORRECT HEIGHT AT QUALIFICATION. APPLY #1-23419-5 LOC-TITE TO THREADS.
- 6. UNLESS SPECIFIED OTHERWISE TORQUE VALUES SHALL BE USED PER DOCUMENT, 101-35000.

**\*WARNING**  
ON INSTALLATION, SET WIRE DISC TO CRIMP HEIGHT REFERENCE SETTING FOR LARGEST WIRE SIZE. CRIMP HEIGHT REFERENCE SETTINGS GREATER THAN THE VALUE SHOWN MAY CAUSE DAMAGE TO THE CRIMP TOOLING, REFER TO THE INSTRUCTION SHEET FOR PROPER SETUP AND ADJUSTMENTS.

**ATLANTIC VERSION**  
Shown on sheets 1 of 4 & 2 of 4  
(Pacific version shown on sheets 3 of 4 & 4 of 4)

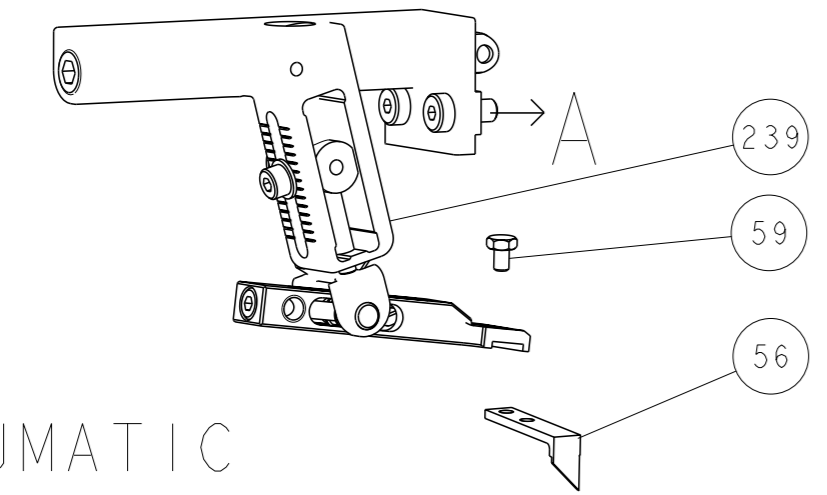
| LOC | DIST | REVISIONS |     |               |           |     |      |
|-----|------|-----------|-----|---------------|-----------|-----|------|
|     |      | #         | LY# | DESCRIPTION   | DATE      | OWN | APVD |
| A   | 66   | A         |     | RELEASED      | 30OCT2013 | BH  | GB   |
|     |      | B         |     | ECR-19-014253 | 11SEP2019 | FJ  | TE   |
|     |      | C         |     | ECR-19-015467 | 19NOV2019 | LG  | RR   |

|   |     |     |     |     |             |                                     |                       |   |
|---|-----|-----|-----|-----|-------------|-------------------------------------|-----------------------|---|
| - | 1   | -   | 1   | -   | 2119641-1   | FEED CAM, AIR FEED                  | 248                   |   |
| - | 1   | 1   | 1   | 1   | 2119082-3   | CAM, SNAIL, INSULATION ADJUSTMENT   | 244                   |   |
| - | 1   | 1   | 1   | 1   | 2079764-1   | WASHER, WAVE SPRING, CREST-TO-CREST | 243                   |   |
| 3 | -   | 1   | 1   | 1   | 2119083-1   | RETAINER, INSULATION DIAL           | 242                   |   |
| - | 1   | 1   | 1   | 1   | 7-18023-7   | SCR, SKT HD CAP M3 X 4.0            | 241                   |   |
| - | -   | 1   | -   | -   | 2119580-1   | MECHANICAL FEED ASSEMBLY            | 239                   |   |
| - | 1   | -   | 1   | -   | 2844940-1   | AIR FEED MODULE                     | 238                   |   |
| - | REF | REF | REF | REF | 994970-2    | COUNTER, MAGNETIC                   | 164                   |   |
| - | 1   | 1   | 1   | 1   | 1-18028-2   | WASHER, FLAT, REG M4                | 119                   |   |
| - | 1   | 1   | 1   | 1   | 2844908-1   | SCREW, LOCKING                      | 99                    |   |
| - | 1   | 1   | 1   | 1   | 2844907-1   | POST, LOCKING                       | 98                    |   |
| - | 1   | 1   | 1   | 1   | 455888-5    | SPACER, CRIMPER                     | 82                    |   |
| - | 1   | 1   | 1   | 1   | 1803607-3   | DOCUMENTATION PACKAGE               | 71                    |   |
| - | 1   | 1   | 1   | 1   | 2119740-1   | TAG, IDENTIFICATION                 | 67                    |   |
| - | 2   | 2   | 2   | 2   | 2168078-1   | SCREW, DRIVE, RH, RoHS, 2 x .188    | 66                    |   |
| - | 1   | 1   | 1   | 1   | 2168083-2   | SCR, SKT HD CAP, RoHS, M4 X 8.0     | 60                    |   |
| - | 1   | 1   | 1   | 1   | 5-18022-5   | SCR, HEX HD CAP, M4 X 6.0           | 59                    |   |
| 5 | -   | 1   | 1   | 1   | 985575-3    | SCR, FLT SKT HD CAP M3 X 10.0       | 57                    |   |
| - | 1   | 1   | 1   | 1   | 1338685-1   | PAWL, FEED                          | 56                    |   |
| - | 4   | 4   | 4   | 4   | 2168083-3   | SCR, SKT HD CAP, RoHS, M4 X 12.0    | 54                    |   |
| - | 2   | 2   | 2   | 2   | 1-2168083-0 | SCR, SKT HD CAP, RoHS, M4 X 10      | 53                    |   |
| - | 1   | 1   | 1   | 1   | 5018030-1   | NUT, HEX, REG, RoHS, M3             | 52                    |   |
| - | 1   | 1   | 1   | 1   | 811242-5    | BUMPER, HOLD DOWN                   | 51                    |   |
| - | 1   | 1   | 1   | 1   | 690753-2    | SPACER, TONKER                      | 50                    |   |
| - | 1   | 2   | 1   | 2   | 18023-9     | SCR, SKT HD CAP M4 X 6.0            | 49                    |   |
| - | -   | 1   | -   | 1   | 2119652-1   | FEED CAM, PRE FEED                  | 48                    |   |
| - | -   | 1   | -   | 1   | 2119653-1   | FEED CAM, POST FEED                 | 47                    |   |
| - | 1   | 1   | 1   | 1   | 1803583-9   | APPLICATOR BASIC ASSEMBLY, SF       | 46                    |   |
| - | 1   | 1   | 1   | 1   | 1803515-1   | RAM ASSEMBLY, SF ATLANTIC           | 44                    |   |
| - | 1   | 1   | 1   | 1   | 1803602-1   | SCR, BHSC, RoHS (M8 X 25)           | 41                    |   |
| - | 1   | 1   | 1   | 1   | 1752356-1   | SUPPORT, TERMINAL                   | 34                    |   |
| - | 2   | 2   | 2   | 2   | 2079383-5   | SCR, BHSC, RoHS (M4 X 20)           | 33                    |   |
| - | 2   | 2   | 2   | 2   | 3-2844962-2 | SPACER, CYLINDRICAL, STRIP GUIDE    | 30                    |   |
| - | 1   | 1   | 1   | 1   | 2844992-1   | ASSEMBLY, STRIP GUIDE               | 29                    |   |
| - | 1   | 1   | 1   | 1   | 455888-3    | SPACER, CRIMPER                     | 28                    |   |
| - | 1   | 1   | 1   | 1   | 1320928-2   | STRIP GUIDE                         | 24                    |   |
| - | 1   | 1   | 1   | 1   | 2168083-2   | SCR, SKT HD CAP, RoHS, M4 X 8.0     | 21                    |   |
| - | 1   | 1   | 1   | 1   | 1-18028-2   | WASHER, FLAT, REG M4                | 20                    |   |
| - | 1   | 1   | 1   | 1   | 2119533-1   | STRIPPER, SIDE FEED                 | 19                    |   |
| 1 | -   | 1   | 1   | 1   | 2119806-1   | INSERT, SHEAR                       | 13                    |   |
| - | 1   | 1   | 1   | 1   | 3-22280-3   | SPRING, COMPRESSION                 | 12                    |   |
| - | 1   | 1   | 1   | 1   | 1-356885-4  | STOP, SHEAR                         | 11                    |   |
| 1 | -   | 1   | 1   | 1   | 2119805-1   | SHEAR HOLDER, FRONT                 | 10                    |   |
| 1 | -   | 1   | 1   | 1   | 318707-1    | FLOATING SHEAR, FRONT               | 9                     |   |
| 1 | 1   | 2   | 2   | 1   | 1           | 6-1633927-1                         | ANVIL, COMBINATION    | 8 |
| - | -   | -   | -   | -   | -           | -                                   | 7                     |   |
| - | -   | -   | -   | -   | -           | -                                   | 6                     |   |
| - | 1   | 1   | 1   | 1   | 2119781-1   | DEPRESSOR, SHEAR                    | 5                     |   |
| - | 1   | 1   | 1   | 1   | 238011-4    | BLOCK, CRIMPER SPACER               | 4                     |   |
| 1 | 1   | 2   | 2   | 1   | 1           | 3-1803018-5                         | CRIMPER, INSULATION O | 3 |
| - | 1   | 1   | 1   | 1   | 1-455888-0  | SPACER, CRIMPER                     | 2                     |   |
| 1 | 1   | 2   | 2   | 1   | 1           | 5-1633738-4                         | CRIMPER, WIRE         | 1 |

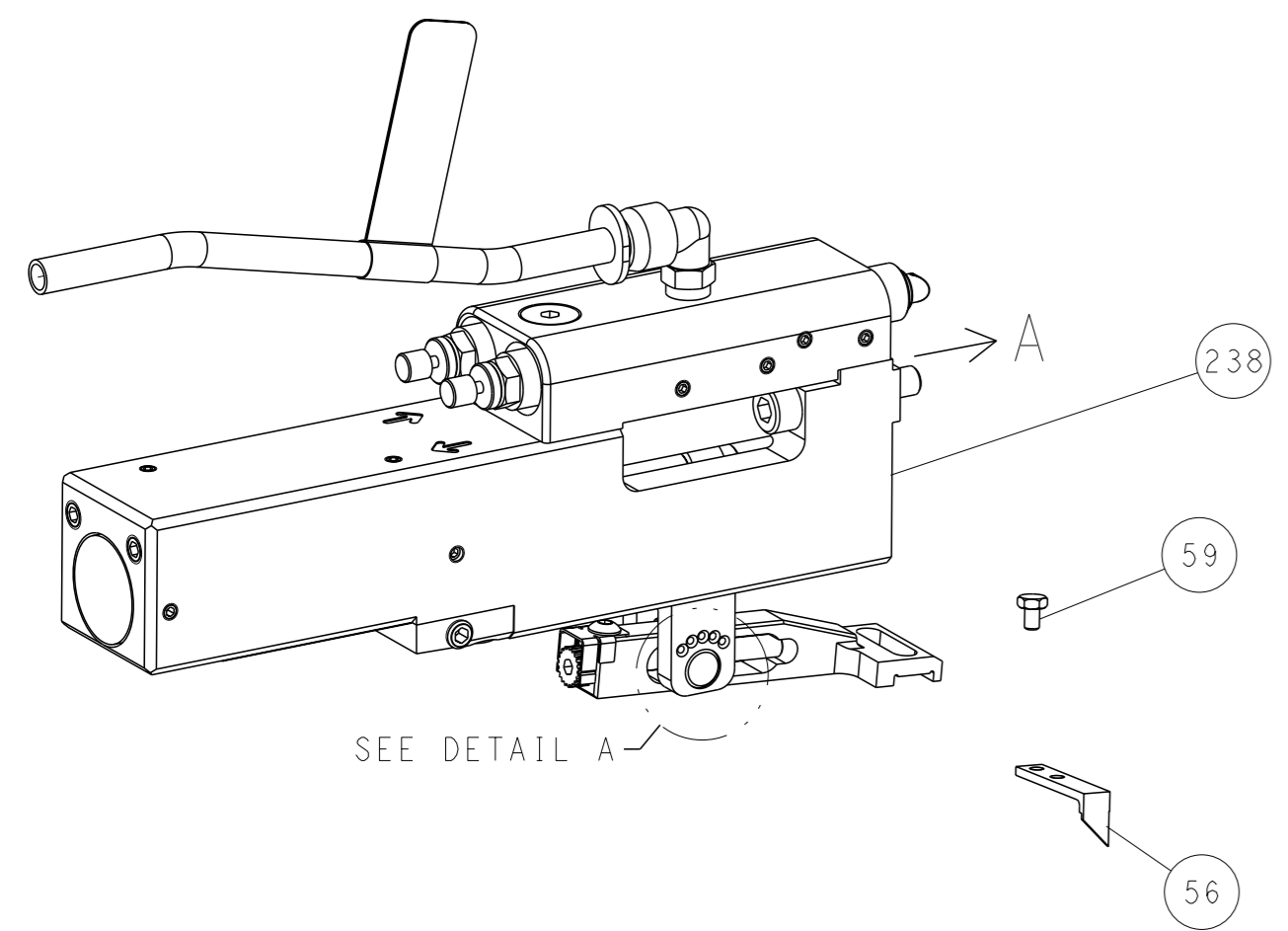
| DIMENSIONS:     |         | TOLERANCES UNLESS OTHERWISE SPECIFIED: |         | MATERIAL:       |         | FINISH:         |        | WEIGHT:         |  | SCALE:          |  |
|-----------------|---------|--|---------|-----------------|---------|-----------------|--------|-----------------|--|-----------------|--|
| mm              | 0 PLC ± | 1 PLC ±                                | 2 PLC ± | 3 PLC ±         | 4 PLC ± | ANGLES          | FINISH |                 |  |                 |  |
| APPLICATOR DATA |         | APPLICATOR DATA                        |         | APPLICATOR DATA |         | APPLICATOR DATA |        | APPLICATOR DATA |  | APPLICATOR DATA |  |
| APPLICATOR DATA |         | APPLICATOR DATA                        |         | APPLICATOR DATA |         | APPLICATOR DATA |        | APPLICATOR DATA |  | APPLICATOR DATA |  |

| LOC | DIST | REVISIONS |     |             |      |     |      |
|-----|------|-----------|-----|-------------|------|-----|------|
| A   | 66   | P         | LYR | DESCRIPTION | DATE | OWN | APVD |
|     |      | -         |     | SEE SHEET 1 | -    | -   | -    |

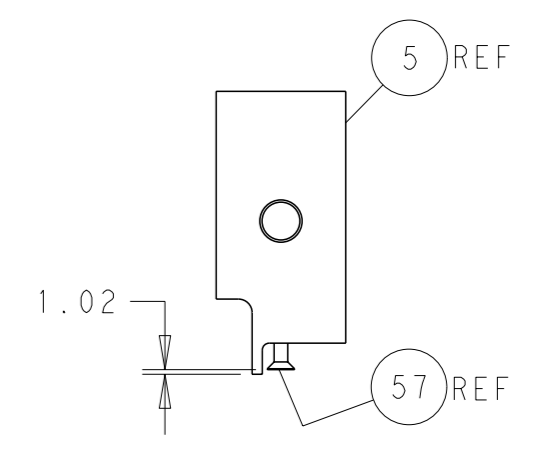
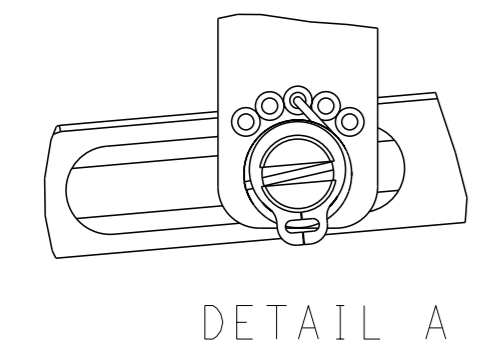
# FEED TYPE MECHANICAL



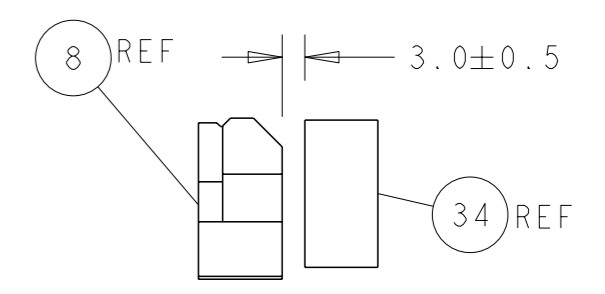
## PNEUMATIC



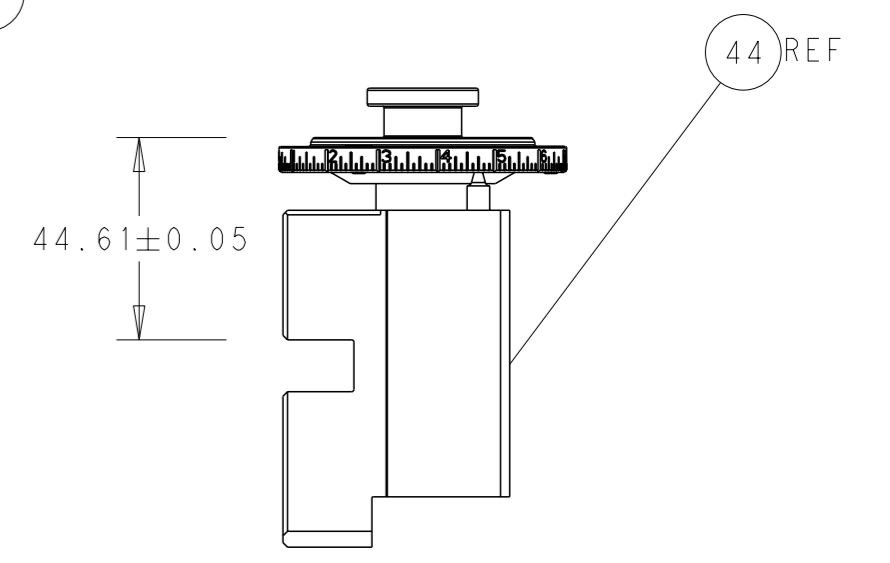
## FEED SPRING SETTING POSITION (SHOWN FROM REAR SIDE)



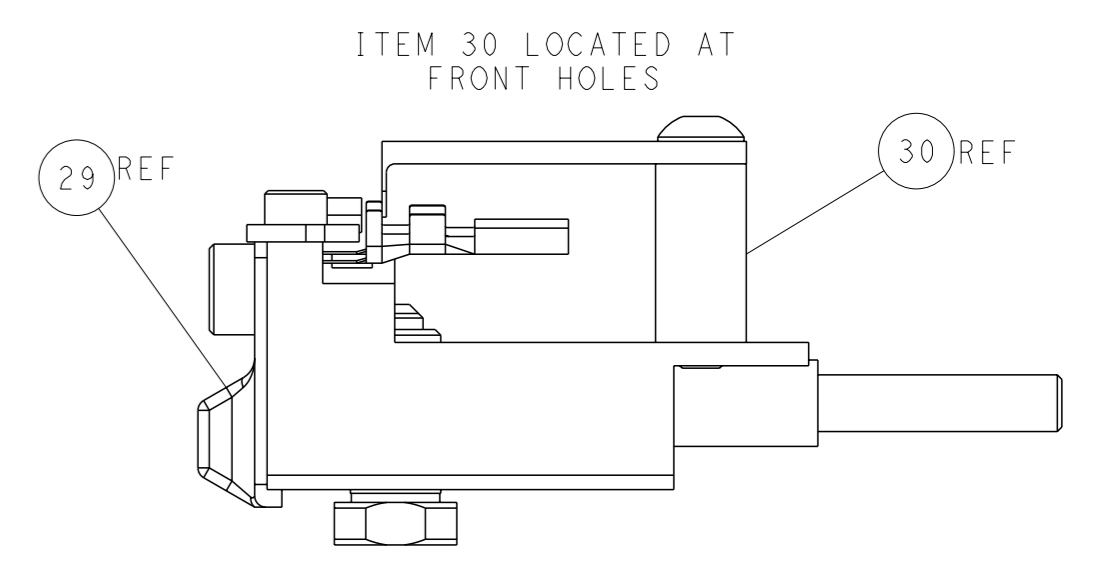
SHEAR DEPRESSOR DETAIL



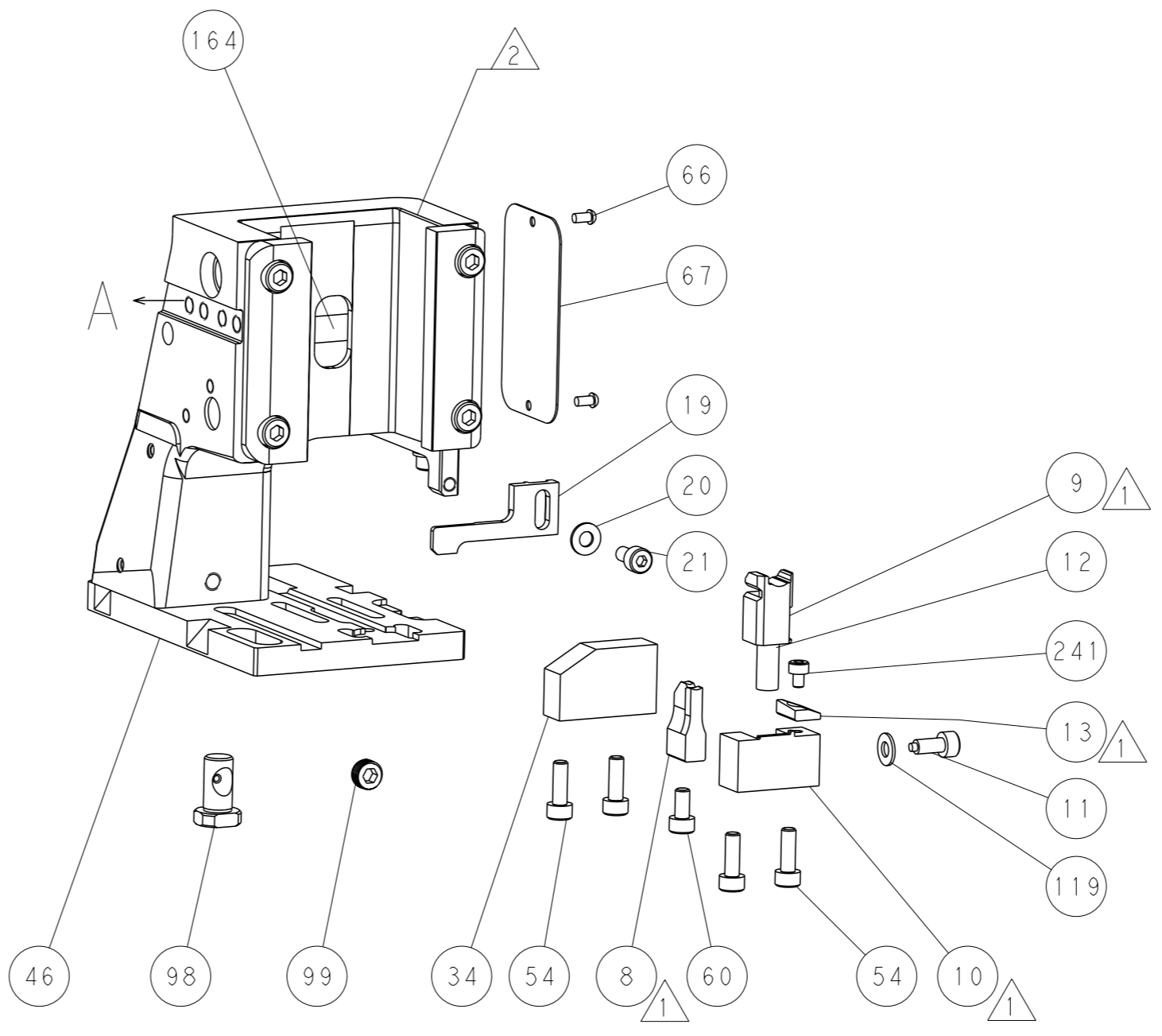
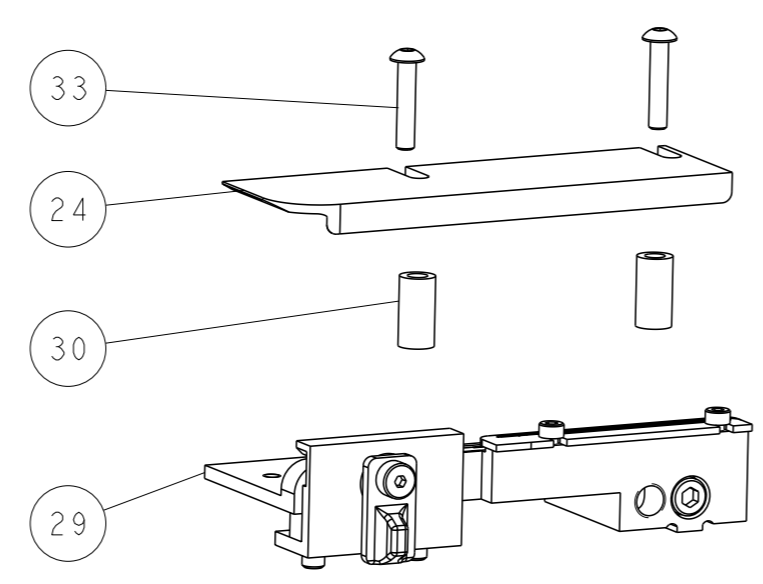
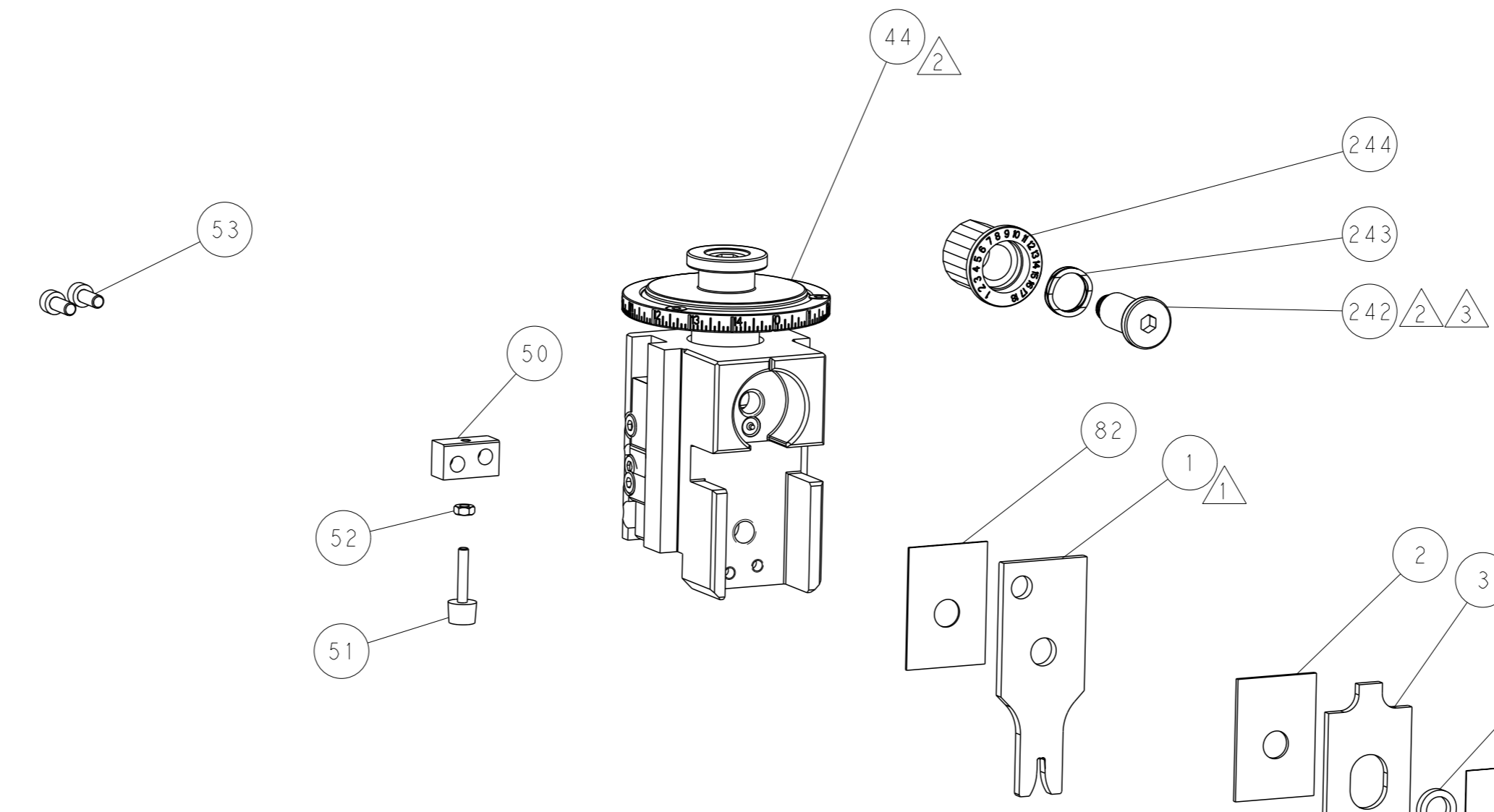
TERMINAL SUPPORT LOCATION



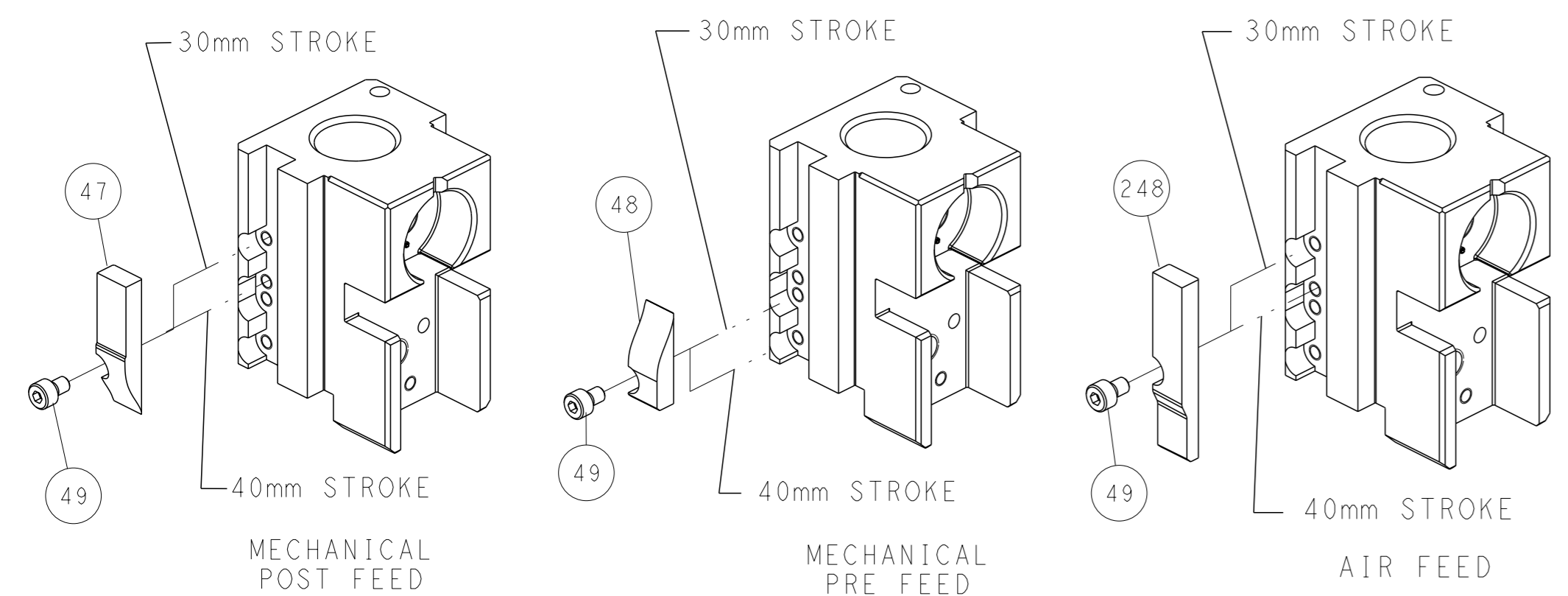
RAM SET-UP



FEED TRACK POSITION GUIDE BY INSULATION BARREL



# CAM POSITIONS

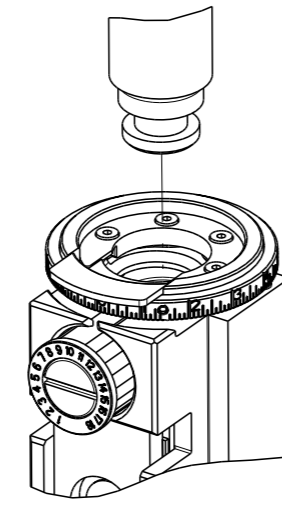


**ATLANTIC VERSION**  
 Shown on sheets 1 of 4 & 2 of 4  
 (Pacific version shown on sheets 3 of 4 & 4 of 4)

|   |  |   |  |  |  |
|---|--|---|--|--|--|
| DIMENSIONS: mm<br>TOLERANCES UNLESS OTHERWISE SPECIFIED:<br>0 PLC ±<br>1 PLC ±<br>2 PLC ±<br>3 PLC ±<br>4 PLC ±<br>ANGLES ° ± |  | OWN: BOB HIGMAN 28SEPT2013<br>CHK: G. BAILEY 28SEPT2013<br>APVD: M. CLIFFORD 28SEPT2013<br>PRODUCT SPEC: -<br>APPLICATION SPEC: -<br>WEIGHT: -<br>MATERIAL: - |  | NAME: Ocean Side Feed Applicator<br>SIZE: A1<br>CAGE CODE: 00779<br>DRAWING NO: 2266064<br>SCALE: 1:2<br>SHEET: 2 of 4<br>REV: C |  |
|---|--|---|--|--|--|

| THIS DRAWING IS UNPUBLISHED.   | RELEASED FOR PUBLICATION |                          |            |
|--|--------------------------|--------------------------|------------|
| © COPYRIGHT 20 BY TYCO ELECTRONICS CORPORATION. ALL RIGHTS RESERVED. | 20                       |                          |            |
| PART NUMBER  | REVISION                 | DESCRIPTION              | FEED TYPE  |
| 2-2266064-1  | C                        | FINE CRIMP HEIGHT ADJUST | MECHANICAL |
| 2-2266064-2  | C                        | FINE CRIMP HEIGHT ADJUST | PNEUMATIC  |
| 7-2266064-7  | A                        | CRIMP TOOLING KIT        | -          |

PACIFIC VERSION TERMINATOR  
INTERFACE ADAPTER



| APPLICATOR DATA                      |                |      |
|--------------------------------------|----------------|------|
| CRIMP                                | SIZE           | TYPE |
| WIRE                                 | 2.44 mm [.096] | F    |
| INSUL                                | 3.76 mm [.148] | O    |
| APPLICATOR INSTRUCTIONS<br>408-35042 |                |      |

|   |   |
|---|---|
| TERMINAL DATA: SUMITOMO TERMINAL SUMITOMO CRIMP SPECIFICATION |   |
| TERMINAL NAME: DLO90 SEALED TERMINAL, FEMALE                  |   |
| WIRE STRIP LENGTH<br>4.50-5.26 mm [.177-.207 IN]              | INSULATION DIAMETER RANGE<br>Ø3.40-3.70 mm [.134-.146 IN] |
| TERMINAL APPLICATION SPECIFICATION<br>SUMITOMO SPEC           | -   |

| TERMINALS APPLIED |                   |           |               | SEAL INSULATION DIAMETER RANGE |
|-------------------|-------------------|-----------|---------------|--------------------------------|
| TE TERMINAL       | SUMITOMO TERMINAL | TE SEAL   | SUMITOMO SEAL |                                |
| 1949148-1         | 8100-1428         | 1949636-1 | 7165-0119     | Ø2.0mm-2.9mm                   |

| WIRE SIZE | CRIMP HEIGHT mm [INCH]     | CRIMP HEIGHT REFERENCE SETTING |
|-----------|----------------------------|--------------------------------|
| 2.00mm2   | 1.55+/-0.05 [.061+/-0.002] | 5.0                            |
| 1.50mm2   | 1.40+/-0.05 [.055+/-0.002] | 6.6                            |
| 1.25mm2   | 1.35+/-0.05 [.053+/-0.002] | 7.3                            |



- 1 RECOMMENDED SPARE PARTS
- 2 REFER TO SUPPLIED INSTRUCTION SHEET FOR CLEANING, LUBRICATION AND STORAGE OF APPLICATOR.
- 3 APPLY PART NUMBER 2-23419-6 LOCTITE TO THREADS OF ITEM 242.
- 4 CRIMP HEIGHT REFERENCE SETTING WAS THE SETTING USED WHEN THE APPLICATOR WAS QUALIFIED AT THE FACTORY. ADJUSTMENT MAY BE NECESSARY WHEN RUNNING APPLICATOR IN THE FIELD.
- 5 APPLY TORO-SEAL IN ALLEN SOCKET TO FILL HOLE AFTER FLAT HD HAS BEEN ADJUSTED TO CORRECT HEIGHT AT QUALIFICATION. APPLY #1-23419-5 LOC-TITE TO THREADS.
- 6. UNLESS SPECIFIED OTHERWISE TORQUE VALUES SHALL BE USED PER DOCUMENT, 101-35000.

**\*WARNING**  
ON INSTALLATION, SET WIRE DISC TO CRIMP HEIGHT REFERENCE SETTING FOR LARGEST WIRE SIZE. CRIMP HEIGHT REFERENCE SETTINGS GREATER THAN THE VALUE SHOWN MAY CAUSE DAMAGE TO THE CRIMP TOOLING, REFER TO THE INSTRUCTION SHEET FOR PROPER SETUP AND ADJUSTMENTS.

PACIFIC VERSION  
Shown on sheets 3 of 4 & 4 of 4  
(Atlantic version shown on sheets 1 of 4 & 2 of 4)

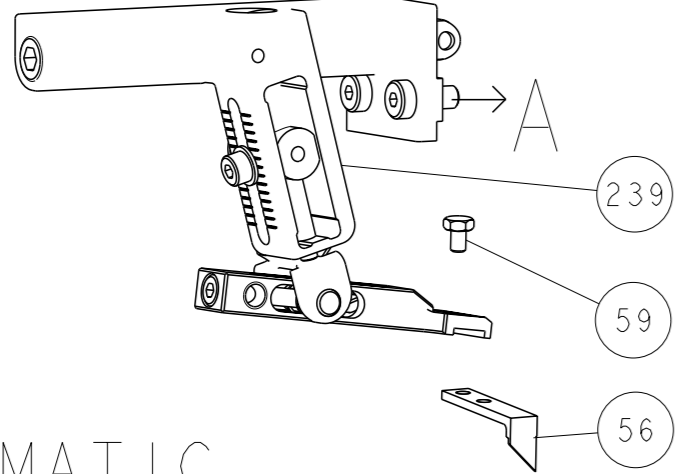
| LOC | DIST | REVISIONS |     |             |      |     |      |
|-----|------|-----------|-----|-------------|------|-----|------|
| A   | 66   | P         | LYR | DESCRIPTION | DATE | OWN | APVD |
|     |      | -         |     | SEE SHEET 1 | -    | -   | -    |

|   |     |     |             |                                     |     |
|---|-----|-----|-------------|-------------------------------------|-----|
| - | 1   | 1   | 2119082-3   | CAM, SNAIL, INSULATION ADJUSTMENT   | 244 |
| - | 1   | 1   | 2079764-1   | WASHER, WAVE SPRING, CREST-TO-CREST | 243 |
| - | 1   | 1   | 2119083-1   | RETAINER, INSULATION DIAL           | 242 |
| - | 1   | 1   | 7-18023-7   | SCR, SKT HD CAP M3 X 4.0            | 241 |
| - | -   | 1   | 2119580-1   | MECHANICAL FEED ASSEMBLY            | 239 |
| - | 1   | -   | 2844940-1   | AIR FEED MODULE                     | 238 |
| - | REF | REF | 994970-2    | COUNTER, MAGNETIC                   | 164 |
| - | 1   | -   | 2119641-2   | FEED CAM, AIR FEED                  | 151 |
| - | 1   | 1   | 2168083-8   | SCR, SKT HD CAP, RoHS, M4 X 16      | 144 |
| - | 4   | 4   | 2168083-9   | SCR, SKT HD CAP, RoHS, M4 X 20      | 143 |
| - | -   | 1   | 2119653-2   | FEED CAM, POST FEED                 | 142 |
| - | 1   | 1   | 1-1803583-0 | APPLICATOR BASIC ASSEMBLY, SF       | 141 |
| - | 1   | 1   | 1803516-1   | RAM ASSEMBLY, SF PACIFIC            | 140 |
| - | 1   | 1   | 1-18028-2   | WASHER, FLAT, REG M4                | 119 |
| - | 1   | 1   | 2844908-1   | SCREW, LOCKING                      | 99  |
| - | 1   | 1   | 2844907-1   | POST, LOCKING                       | 98  |
| - | 1   | 1   | 455888-5    | SPACER, CRIMPER                     | 82  |
| - | 1   | 1   | 1803607-3   | DOCUMENTATION PACKAGE               | 71  |
| - | 1   | 1   | 2119740-1   | TAG, IDENTIFICATION                 | 67  |
| - | 2   | 2   | 2168078-1   | SCREW, DRIVE, RH, RoHS, 2 x .188    | 66  |
| - | 1   | 1   | 5-18022-5   | SCR, HEX HD CAP, M4 X 6.0           | 59  |
| - | 1   | 1   | 985575-3    | SCR, FLT SKT HD CAP M3 X 10.0       | 57  |
| - | 1   | 1   | 1338685-1   | PAWL, FEED                          | 56  |
| - | 2   | 2   | 1-2168083-0 | SCR, SKT HD CAP, RoHS, M4 X 10      | 53  |
| - | 1   | 1   | 5018030-1   | NUT, HEX, REG, RoHS, M3             | 52  |
| - | 1   | 1   | 811242-5    | BUMPER, HOLD DOWN                   | 51  |
| - | 1   | 1   | 690753-2    | SPACER, TONKER                      | 50  |
| - | 1   | 2   | 18023-9     | SCR, SKT HD CAP M4 X 6.0            | 49  |
| - | -   | 1   | 2119652-1   | FEED CAM, PRE FEED                  | 48  |
| - | 1   | 1   | 1803602-1   | SCR, BHSC, RoHS (M8 X 25)           | 41  |
| - | 1   | 1   | 1752356-1   | SUPPORT, TERMINAL                   | 34  |
| - | 2   | 2   | 2079383-5   | SCR, BHSC, RoHS (M4 X 20)           | 33  |
| - | 2   | 2   | 3-2844962-2 | SPACER, CYLINDRICAL, STRIP GUIDE    | 30  |
| - | 1   | 1   | 2844992-1   | ASSEMBLY, STRIP GUIDE               | 29  |
| - | 1   | 1   | 455888-3    | SPACER, CRIMPER                     | 28  |
| - | 1   | 1   | 1320928-2   | STRIP GUIDE                         | 24  |
| - | 1   | 1   | 2168083-2   | SCR, SKT HD CAP, RoHS, M4 X 8.0     | 21  |
| - | 1   | 1   | 1-18028-2   | WASHER, FLAT, REG M4                | 20  |
| - | 1   | 1   | 2119533-1   | STRIPPER, SIDE FEED                 | 19  |
| - | 1   | 1   | 2119806-1   | INSERT, SHEAR                       | 13  |
| - | 1   | 1   | 3-22280-3   | SPRING, COMPRESSION                 | 12  |
| - | 1   | 1   | 1-356885-4  | STOP, SHEAR                         | 11  |
| - | 1   | 1   | 2119805-1   | SHEAR HOLDER, FRONT                 | 10  |
| - | 1   | 1   | 318707-1    | FLOATING SHEAR, FRONT               | 9   |
| 1 | 1   | 1   | 6-1633927-1 | ANVIL, COMBINATION                  | 8   |
| - | -   | -   | -           | -                                   | 7   |
| - | -   | -   | -           | -                                   | 6   |
| - | 1   | 1   | 2119781-1   | DEPRESSOR, SHEAR                    | 5   |
| - | 1   | 1   | 238011-4    | BLOCK, CRIMPER SPACER               | 4   |
| 1 | 1   | 1   | 3-1803018-5 | CRIMPER, INSULATION O               | 3   |
| - | 1   | 1   | 1-455888-0  | SPACER, CRIMPER                     | 2   |
| 1 | 1   | 1   | 5-1633738-4 | CRIMPER, WIRE                       | 1   |

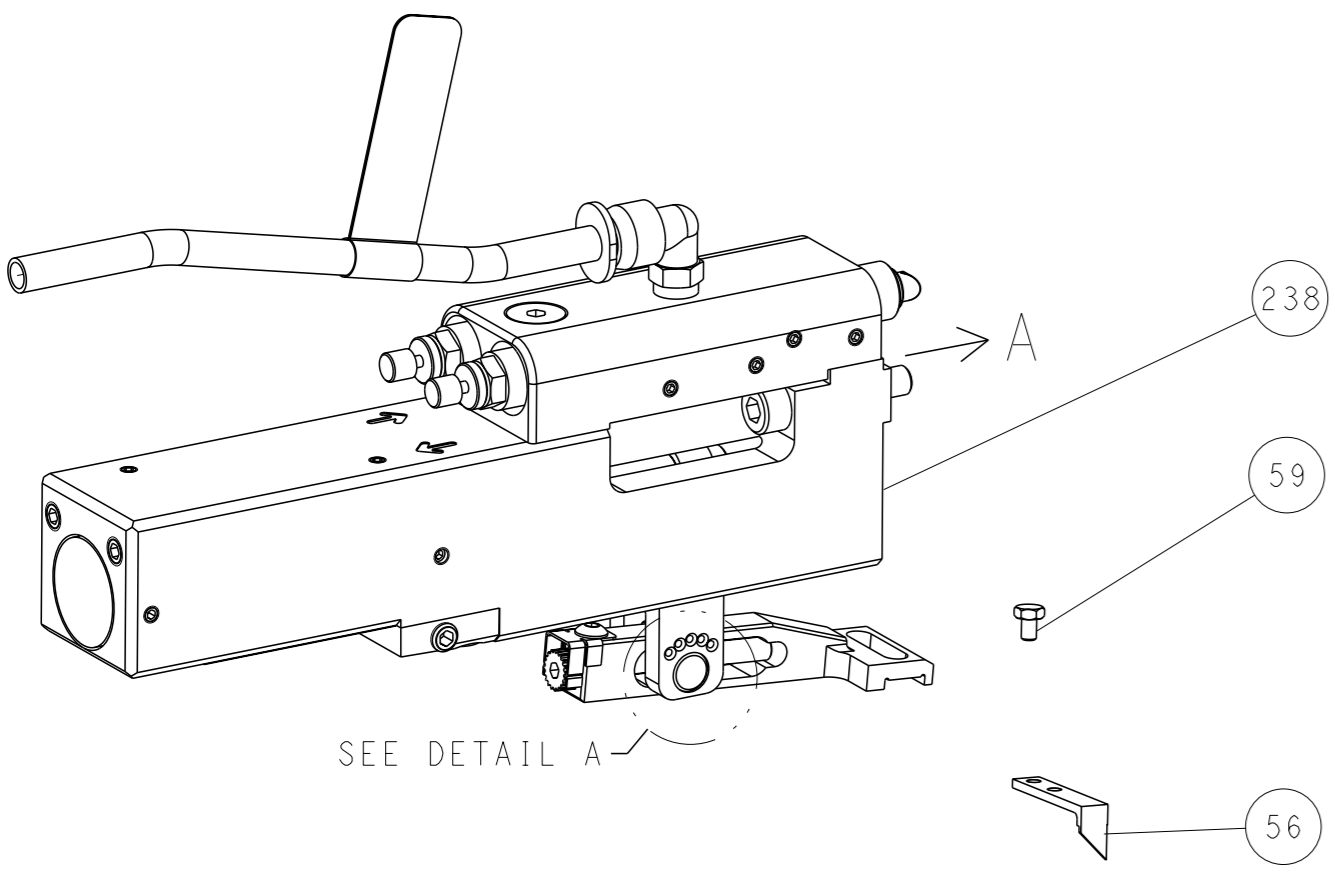
|   |  |   |  |
|---|--|---|--|
| <small>THE DRAWING IS CONTROLLED DOCUMENT FROM THE REVISIONS INFORMATION SHOULD BE CONTACTED FOR THE LATEST REVISION.</small> |  | OWN: BOB HIGMAN 28SEPT2013<br>CHK: G. BAILEY 28SEPT2013<br>APVD: M. CLIFFORD 28SEPT2013 | NAME: TE Connectivity<br>Harrisburg, PA 17105-3608                           |
| DIMENSIONS:<br>mm<br>   | TOLERANCES UNLESS OTHERWISE SPECIFIED:<br>0 PLC ±<br>1 PLC ±<br>2 PLC ±<br>3 PLC ±<br>4 PLC ±<br>ANGLES FINISH ± | APPLICATION SPEC<br>WEIGHT<br>SCALE: 1:2  | SIZE: A1<br>CAGE CODE: 00779<br>DRAWING NO: 2266064<br>SHEET 3 OF 4<br>REV C |

| LOC | DIST | REVISIONS |      |     |      |
|-----|------|-----------|------|-----|------|
| A   | 66   | REV       | DATE | OWN | APVD |
|     |      | 1         |      |     |      |
|     |      | 2         |      |     |      |
|     |      | 3         |      |     |      |
|     |      | 4         |      |     |      |
|     |      | 5         |      |     |      |
|     |      | 6         |      |     |      |
|     |      | 7         |      |     |      |
|     |      | 8         |      |     |      |
|     |      | 9         |      |     |      |
|     |      | 10        |      |     |      |
|     |      | 11        |      |     |      |
|     |      | 12        |      |     |      |
|     |      | 13        |      |     |      |
|     |      | 14        |      |     |      |
|     |      | 15        |      |     |      |
|     |      | 16        |      |     |      |
|     |      | 17        |      |     |      |
|     |      | 18        |      |     |      |
|     |      | 19        |      |     |      |
|     |      | 20        |      |     |      |
|     |      | 21        |      |     |      |
|     |      | 22        |      |     |      |
|     |      | 23        |      |     |      |
|     |      | 24        |      |     |      |
|     |      | 25        |      |     |      |
|     |      | 26        |      |     |      |
|     |      | 27        |      |     |      |
|     |      | 28        |      |     |      |
|     |      | 29        |      |     |      |
|     |      | 30        |      |     |      |
|     |      | 31        |      |     |      |
|     |      | 32        |      |     |      |
|     |      | 33        |      |     |      |
|     |      | 34        |      |     |      |
|     |      | 35        |      |     |      |
|     |      | 36        |      |     |      |
|     |      | 37        |      |     |      |
|     |      | 38        |      |     |      |
|     |      | 39        |      |     |      |
|     |      | 40        |      |     |      |
|     |      | 41        |      |     |      |
|     |      | 42        |      |     |      |
|     |      | 43        |      |     |      |
|     |      | 44        |      |     |      |
|     |      | 45        |      |     |      |
|     |      | 46        |      |     |      |
|     |      | 47        |      |     |      |
|     |      | 48        |      |     |      |
|     |      | 49        |      |     |      |
|     |      | 50        |      |     |      |
|     |      | 51        |      |     |      |
|     |      | 52        |      |     |      |
|     |      | 53        |      |     |      |
|     |      | 54        |      |     |      |
|     |      | 55        |      |     |      |
|     |      | 56        |      |     |      |
|     |      | 57        |      |     |      |
|     |      | 58        |      |     |      |
|     |      | 59        |      |     |      |
|     |      | 60        |      |     |      |
|     |      | 61        |      |     |      |
|     |      | 62        |      |     |      |
|     |      | 63        |      |     |      |
|     |      | 64        |      |     |      |
|     |      | 65        |      |     |      |
|     |      | 66        |      |     |      |
|     |      | 67        |      |     |      |
|     |      | 68        |      |     |      |
|     |      | 69        |      |     |      |
|     |      | 70        |      |     |      |
|     |      | 71        |      |     |      |
|     |      | 72        |      |     |      |
|     |      | 73        |      |     |      |
|     |      | 74        |      |     |      |
|     |      | 75        |      |     |      |
|     |      | 76        |      |     |      |
|     |      | 77        |      |     |      |
|     |      | 78        |      |     |      |
|     |      | 79        |      |     |      |
|     |      | 80        |      |     |      |
|     |      | 81        |      |     |      |
|     |      | 82        |      |     |      |
|     |      | 83        |      |     |      |
|     |      | 84        |      |     |      |
|     |      | 85        |      |     |      |
|     |      | 86        |      |     |      |
|     |      | 87        |      |     |      |
|     |      | 88        |      |     |      |
|     |      | 89        |      |     |      |
|     |      | 90        |      |     |      |
|     |      | 91        |      |     |      |
|     |      | 92        |      |     |      |
|     |      | 93        |      |     |      |
|     |      | 94        |      |     |      |
|     |      | 95        |      |     |      |
|     |      | 96        |      |     |      |
|     |      | 97        |      |     |      |
|     |      | 98        |      |     |      |
|     |      | 99        |      |     |      |
|     |      | 100       |      |     |      |
|     |      | 101       |      |     |      |
|     |      | 102       |      |     |      |
|     |      | 103       |      |     |      |
|     |      | 104       |      |     |      |
|     |      | 105       |      |     |      |
|     |      | 106       |      |     |      |
|     |      | 107       |      |     |      |
|     |      | 108       |      |     |      |
|     |      | 109       |      |     |      |
|     |      | 110       |      |     |      |
|     |      | 111       |      |     |      |
|     |      | 112       |      |     |      |
|     |      | 113       |      |     |      |
|     |      | 114       |      |     |      |
|     |      | 115       |      |     |      |
|     |      | 116       |      |     |      |
|     |      | 117       |      |     |      |
|     |      | 118       |      |     |      |
|     |      | 119       |      |     |      |
|     |      | 120       |      |     |      |
|     |      | 121       |      |     |      |
|     |      | 122       |      |     |      |
|     |      | 123       |      |     |      |
|     |      | 124       |      |     |      |
|     |      | 125       |      |     |      |
|     |      | 126       |      |     |      |
|     |      | 127       |      |     |      |
|     |      | 128       |      |     |      |
|     |      | 129       |      |     |      |
|     |      | 130       |      |     |      |
|     |      | 131       |      |     |      |
|     |      | 132       |      |     |      |
|     |      | 133       |      |     |      |
|     |      | 134       |      |     |      |
|     |      | 135       |      |     |      |
|     |      | 136       |      |     |      |
|     |      | 137       |      |     |      |
|     |      | 138       |      |     |      |
|     |      | 139       |      |     |      |
|     |      | 140       |      |     |      |
|     |      | 141       |      |     |      |
|     |      | 142       |      |     |      |
|     |      | 143       |      |     |      |
|     |      | 144       |      |     |      |
|     |      | 145       |      |     |      |
|     |      | 146       |      |     |      |
|     |      | 147       |      |     |      |
|     |      | 148       |      |     |      |
|     |      | 149       |      |     |      |
|     |      | 150       |      |     |      |
|     |      | 151       |      |     |      |
|     |      | 152       |      |     |      |
|     |      | 153       |      |     |      |
|     |      | 154       |      |     |      |
|     |      | 155       |      |     |      |
|     |      | 156       |      |     |      |
|     |      | 157       |      |     |      |
|     |      | 158       |      |     |      |
|     |      | 159       |      |     |      |
|     |      | 160       |      |     |      |
|     |      | 161       |      |     |      |
|     |      | 162       |      |     |      |
|     |      | 163       |      |     |      |
|     |      | 164       |      |     |      |
|     |      | 165       |      |     |      |
|     |      | 166       |      |     |      |
|     |      | 167       |      |     |      |
|     |      | 168       |      |     |      |
|     |      | 169       |      |     |      |
|     |      | 170       |      |     |      |
|     |      | 171       |      |     |      |
|     |      | 172       |      |     |      |
|     |      | 173       |      |     |      |
|     |      | 174       |      |     |      |
|     |      | 175       |      |     |      |
|     |      | 176       |      |     |      |
|     |      | 177       |      |     |      |
|     |      | 178       |      |     |      |
|     |      | 179       |      |     |      |
|     |      | 180       |      |     |      |
|     |      | 181       |      |     |      |
|     |      | 182       |      |     |      |
|     |      | 183       |      |     |      |
|     |      | 184       |      |     |      |
|     |      | 185       |      |     |      |
|     |      | 186       |      |     |      |
|     |      | 187       |      |     |      |
|     |      | 188       |      |     |      |
|     |      | 189       |      |     |      |
|     |      | 190       |      |     |      |
|     |      | 191       |      |     |      |
|     |      | 192       |      |     |      |
|     |      | 193       |      |     |      |
|     |      | 194       |      |     |      |
|     |      | 195       |      |     |      |
|     |      | 196       |      |     |      |
|     |      | 197       |      |     |      |
|     |      | 198       |      |     |      |
|     |      | 199       |      |     |      |
|     |      | 200       |      |     |      |

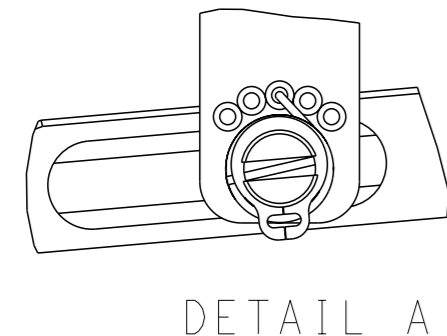
# FEED TYPE MECHANICAL



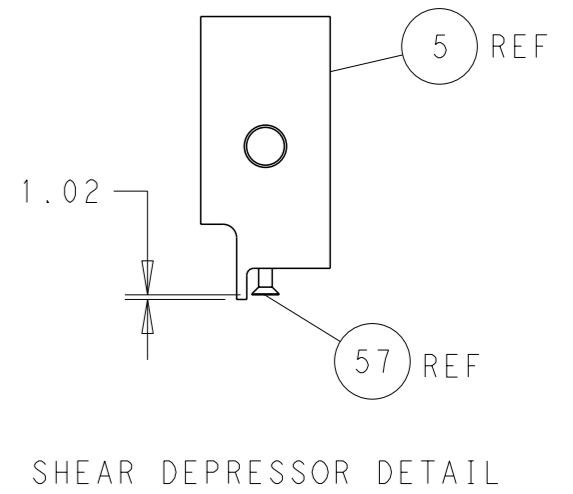
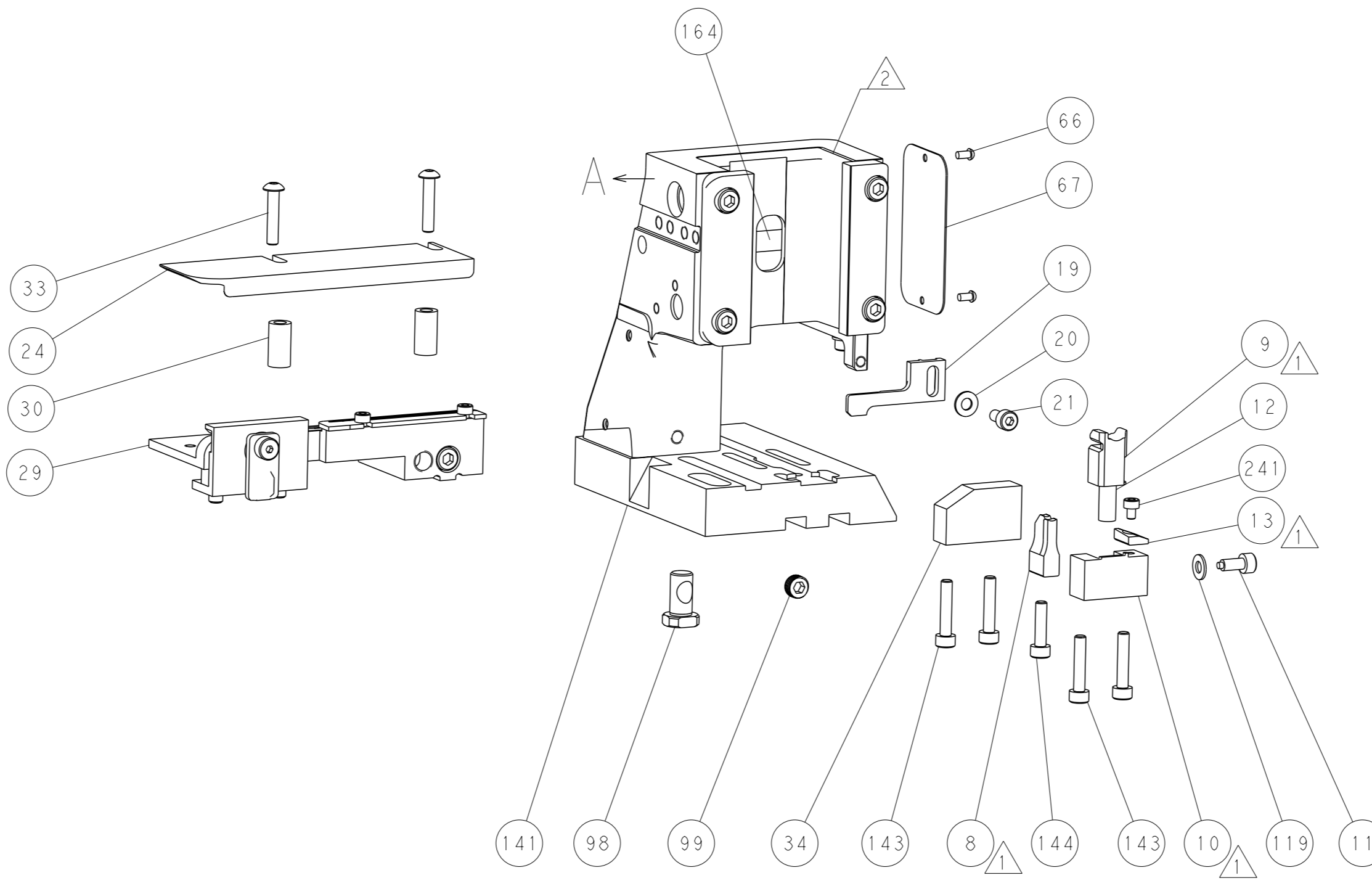
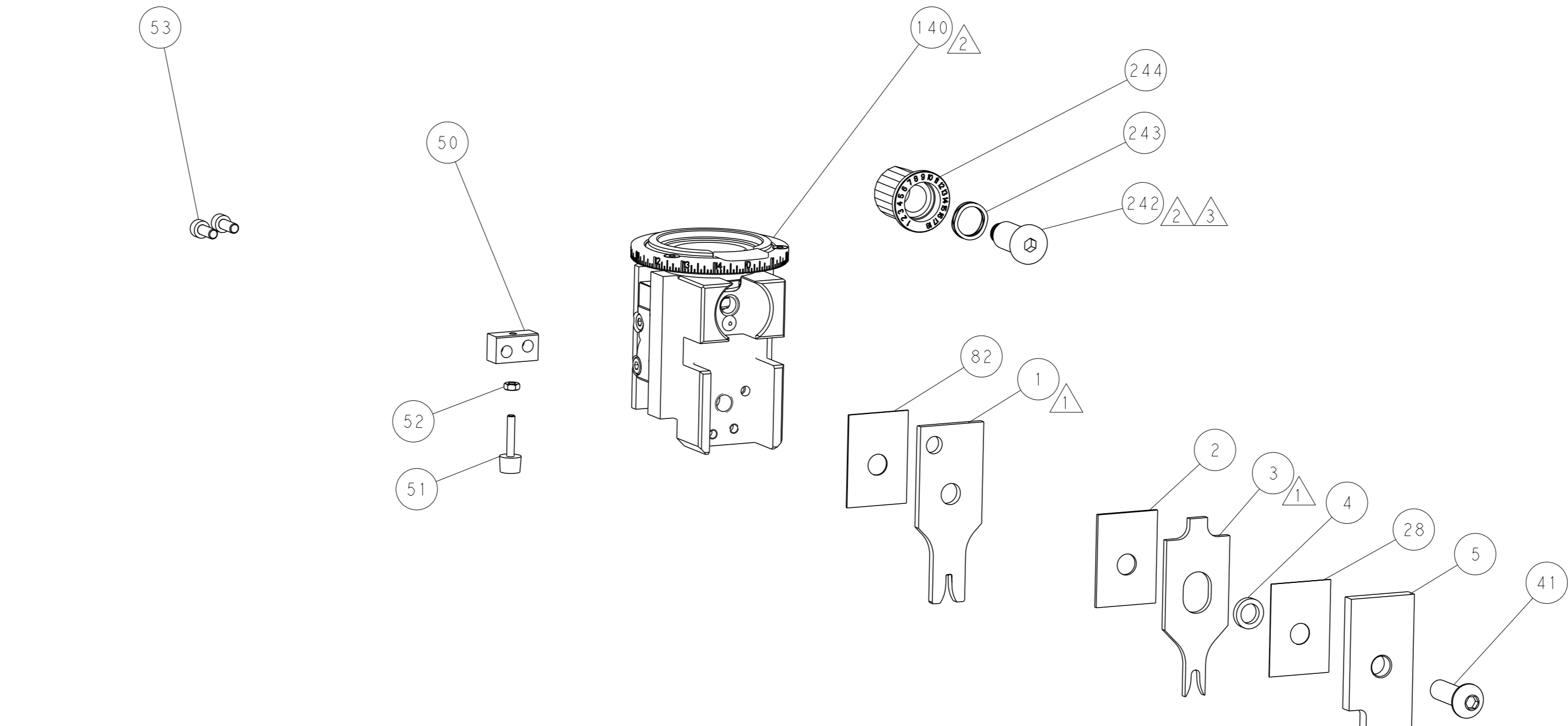
## PNEUMATIC



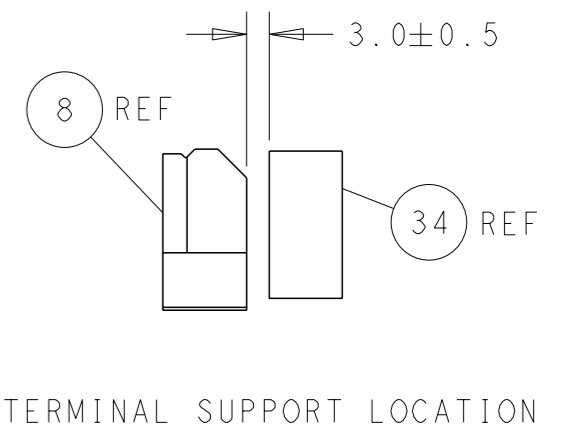
## FEED SPRING SETTING POSITION (SHOWN FROM REAR SIDE)



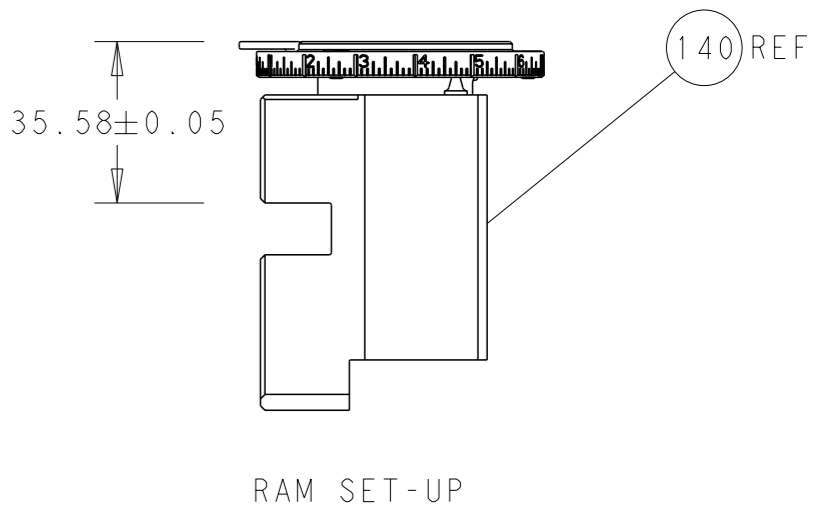
DETAIL A



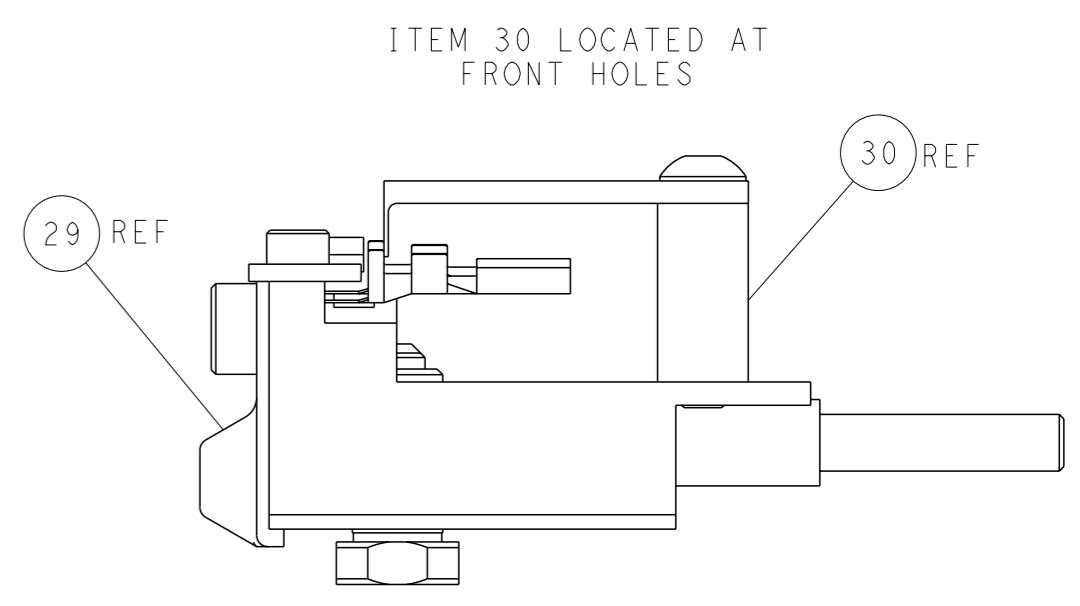
SHEAR DEPRESSOR DETAIL



TERMINAL SUPPORT LOCATION

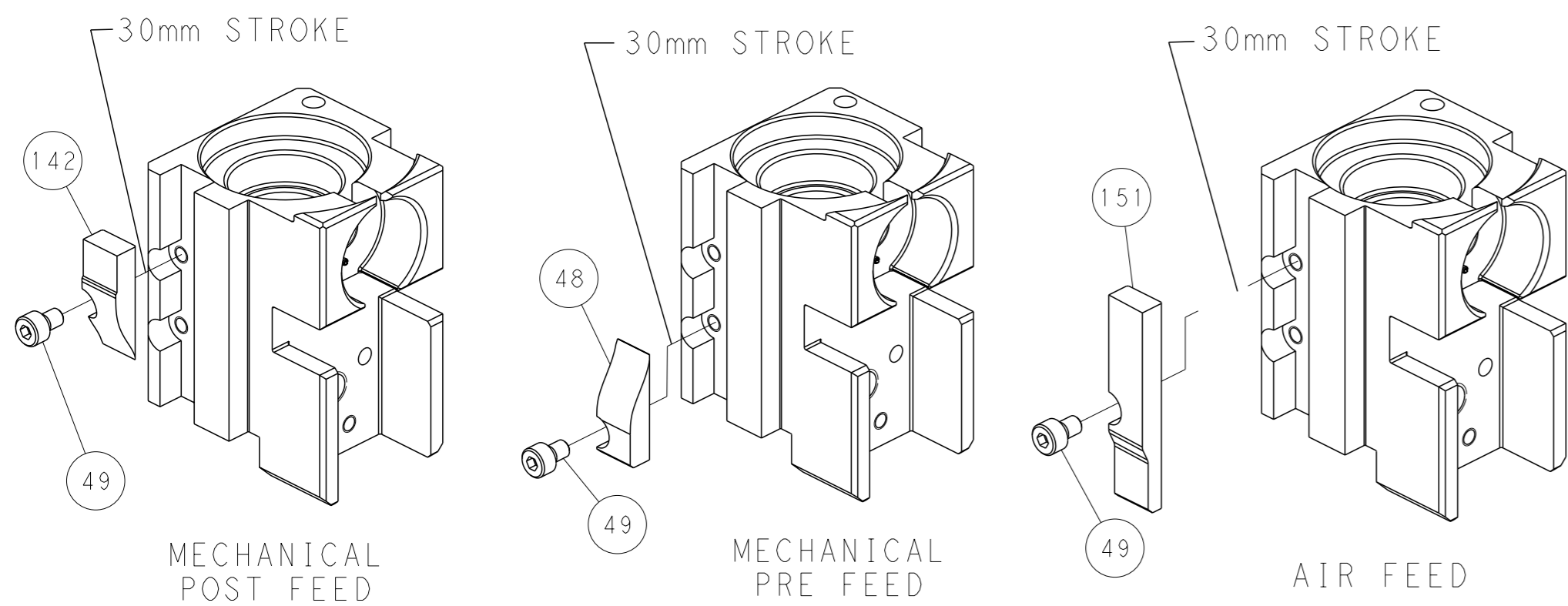


RAM SET-UP



FEED TRACK POSITION GUIDE BY INSULATION BARREL

# CAM POSITIONS



**PACIFIC VERSION**  
 Shown on sheets 3 of 4 & 4 of 4  
 (Atlantic version shown on sheets 1 of 4 & 2 of 4)

|   |  |  |  |
|---|--|--|--|
| <small>THIS DRAWING IS A CONTROLLED DOCUMENT FOR TYCO ELECTRONICS CORPORATION. IT IS SUBJECT TO CHANGE AND THE CONTROLLER ENGINEERING ORGANIZATION SHOULD BE CONTACTED FOR THE LATEST REVISION.</small> |  | OWN: BOB HIGMAN 28SEPT2013<br>CHK: G. BAILEY 28SEPT2013<br>APVD: M. CLIFFORD 28SEPT2013    | NAME: TE Connectivity<br>Harrisburg, PA 17105-3608 |
| DIMENSIONS: mm<br>TOLERANCES UNLESS OTHERWISE SPECIFIED:<br>0 PLC ±<br>1 PLC ±<br>2 PLC ±<br>3 PLC ±<br>4 PLC ±<br>ANGLES FINISH ±  | APPLICATION SPEC: -<br>WEIGHT: -<br>SCALE: 1:2 | PRODUCT SPEC: -<br>RESTRICTED TO: -<br>SIZE: A1<br>CAGE CODE: 00779<br>DRAWING NO: 2266064 | SHEET: 4<br>OF: 4<br>REV: C                        |
| MATERIAL: -<br>FINISH: -  |  | Customer Accessible Production Drawing   |  |