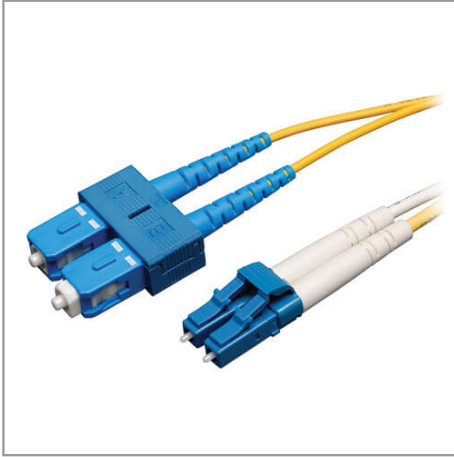


Duplex Singlemode 8.3/125 Fiber Patch Cable (LC/SC), 30 m (100 ft.)

MODEL NUMBER: **N366-30M**



Premium singlemode fiber optic cabling transmits fast, clear data signals through your LAN with twice the bandwidth throughput of multimode cable.

Description

The N366-30M Duplex Singlemode 8.3/125 Fiber Patch Cable transmits fast, clear data signals through your LAN with a higher bandwidth than multimode cable for up to twice the throughput. Designed for network equipment that requires singlemode fiber optic patch cables, this 30-meter (100-foot) cable has attenuation loss that meets or exceeds current standards.

The N366-30M has 8.3/125 duplex (zipcord) fiber made from glass, instead of polymer. The sturdy LC and SC male connectors meet stringent insertion loss standards and feature beveled edges on their glass ends for easy insertion into a patch panel or switch. The FDDI- and OFNR-rated PVC jacket is yellow to easily identify it as a singlemode cable.

Features

Fast, Clear Data Transmission Through Your LAN

- Twice the bandwidth throughput of multimode cable
- Ideal for network equipment that requires singlemode fiber optic patch cables
- Attenuation loss meets or exceeds latest industry standards

Superior Construction for Error-Free Signal Transfer

- 8.3/125 duplex (zipcord) fiber made from glass
- Sturdy LC and SC male connectors meet stringent insertion loss standards
- Beveled edge on glass ends for easy plug insertion
- Yellow-colored for identification as singlemode

Highlights

- Attenuation loss meets or exceeds latest industry standards
- 8.3/125 duplex (zipcord) fiber made from glass
- LC and SC male connectors meet insertion loss standards
- FDDI- and OFNR-rated PVC jacket
- Beveled edge on glass ends for easy plug insertion

System Requirements

- Fiber optic hardware or NIC card requiring singlemode duplex cable with LC/SC connectors

Package Includes

- N366-30M Duplex Singlemode 8.3/125 Fiber Patch Cable, 30 m



Specifications

OVERVIEW	
UPC Code	037332156976
Clad Diameter	125 micron
Core Diameter	8.3 micron
Number of Fibers	2
Optical Mode	OS2
INPUT	
Cable Length (ft.)	98.4
Cable Length (m)	30
Cable Length (in.)	1181.1
PHYSICAL	
Color	Yellow
Shipping Dimensions (hwd / cm)	26.67 x 30.48 x 1.27
Shipping Dimensions (hwd / in.)	10.50 x 12.00 x 0.50
Shipping Weight (kg)	0.24
Shipping Weight (lbs.)	0.54
CONNECTIONS	
Side A - Connector 1	LC DUPLEX (MALE)
Side B - Connector 1	SC DUPLEX (MALE)
FEATURES & SPECIFICATIONS	
Technology	Singlemode
SPECIAL FEATURES	
Push/Pull Tabs	No
CERTIFICATIONS	
Approvals	FDDI and OFNR rated
WARRANTY	
Product Warranty Period (Worldwide)	Lifetime limited warranty



Tripp Lite
1111 W. 35th Street
Chicago, IL 60609 USA
Telephone: 773.869.1234
www.tripplite.com

not imply any affiliation with or endorsement by them. Tripp Lite has a policy of continuous improvement. Specifications are subject to change without notice.

Tripp Lite uses primary and third-party agencies to test its products for compliance with standards. See a list of Tripp Lite's testing agencies:

<https://www.tripplite.com/products/product-certification-agencies>