

6

5

4

3

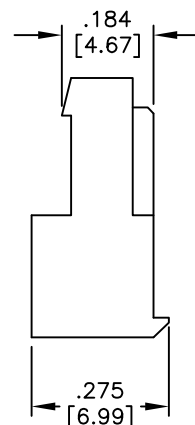
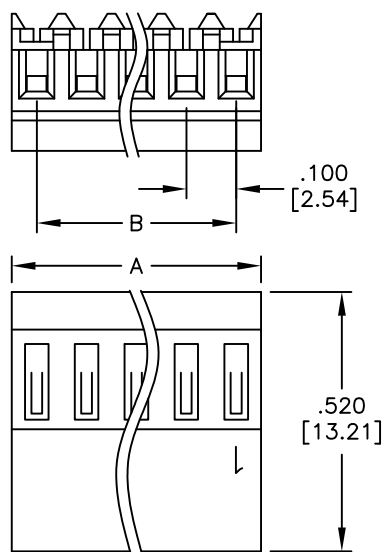
2

1

APPROVED: _____

DATE: _____ TITLE: _____

Rev	AWO #	Description	Date	Appr
-		RELEASED	4/12/05	
A		CORRECTION ON FRONT VIEW	01/25/07	
B		REDRAWN	8/21/09	
C		UPDATE SPEC.	10/25/19	AY/KC



PART NUMBER	Wire Size	Insulator Color	Contact resistance
MTD-A-XX-C-2	22 AWG	RED	10mΩ Max
MTD-A-XX-D-2	24 AWG	WHITE	15mΩ Max
MTD-A-XX-E-2	26 AWG	BLUE	20mΩ Max
MTD-A-XX-F-2	28 AWG	GREEN	30mΩ Max

SPECIFICATIONS:

Material:
Insulator: Nylon 66, rated UL 94V-2

Insulator color: See chart

Contacts: Phosphor Bronze

Plating:
Tin over Copper underplate overall

Electrical:
Voltage rating: 250 VAC/DC max.

Current rating: 3A AC/DC.

Contact resistance: See chart.

Insulation resistance: 1000 Mohms min.

Dielectric withstanding voltage: 1500 VAC for 1 minute

Temperature Rating:

Operating temperature: -40°C to +105°C

Environmental:

Lead free, RoHS compliant



Positions: 2 thru 24

A = .100 [2.54] x No. of Positions

B = .100 [2.54] x No. of Spaces

UNLESS OTHERWISE SPECIFIED
ALL DIMENSIONS ARE INCHES [MM]
TOLERANCES: EXCEPT AS NOTED

INCHES		HOLES	
.X	± .10	∅X	± .10
.XX	± .020	∅XX	± .015
.XXX	± .015	∅XXX	± .010

ADAM
TECH
INTERCONNECTS

909 Rahway Avenue,
Union, NJ 07083
Phone: 908-687-5000
Fax: 908-687-5710

APPROVALS		DATE
DRAWN	SS	4/12/05
CHECKED		
APPROVED		

TITLE IDC MASS TERMINATION HOUSING .100 [2.54] SPACING, CLOSED END		
SIZE X	PART NO. MTD-A-XX-X-2	REV. C
REF: S00004T	SCALE: NTS	SHEET 1 OF 1

6

5

4

3

2

1