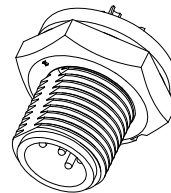
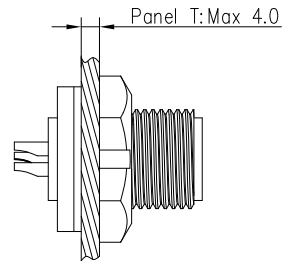
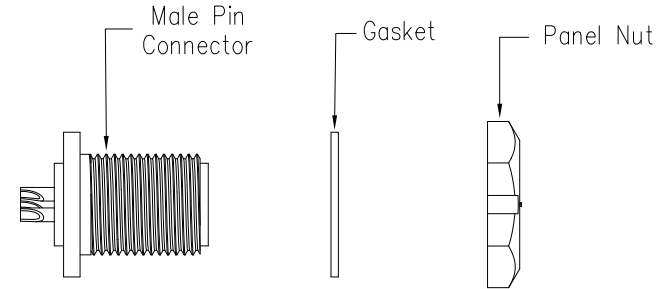
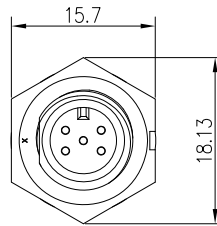
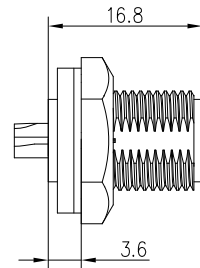
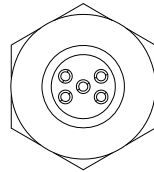


Recommended Panel Cut-out

21XXX515-01

Pin Number



Specification:

- 1.Operation Temperature: -45°C~105°C.
- 2.Insulation Resistance:100MΩat DC 500V.
- 3.Contact Resistance:<10mΩ.
- 4.Withstand Voltage:1300V AC.
- 5.Operating Current:2A.
- 6.Operating Voltage:AC 50V.
- 7.Waterproof Rate:IP67(Mated).
- 8.Connector:Nylon+GF, Black.
- 9.Panel Nut:Nylon, Black.
- 10.Gasket:Silicon, Gray.
- 11.Male Pin:Copper Alloy, Gold Plated.
- 12.Torque Rate:0.5~0.7N·m.
- 13.RoHS Compliant.
- 14.UL Compliant.
- 15.Mating Cap P/N:806-00028-00

7 Pin	8 Pin
P/N:21007515-01	P/N:21008515-01
5 Pin	6 Pin
P/N:21005515-01	P/N:21006515-01
Pin Assignments Front View	

UNIT:mm		DESCRIPTION Mini Series Screw Type Front Mount With Male Pin	
TOLERANCE	.X ±0.25 .XX ±0.15 .XXX ±0.05 ANGLES ±1°	SCALE: 4:5	SHEET 1 OF 1
REV. C1	SIZE A4	*: Inspection Item	

CHOGORI

REV.	ECN NO.	DESCRIPTION	SIGN	DATE
C1	N/A	INITIAL DRAWING	Victory	2020/04/20

PART NO 21XXX515-01	DRAWN BY Victory	DATE 2020/04/20
DWG NO	CHECKED BY Ivan	DATE 2020/04/20
CUSTOMER	APPROVED BY Panson	DATE 2020/04/20

THIS INFORMATION IS CONFIDENTIAL AND IS DISCLOSED TO YOU ON CONDITION THAT NO FURTHER DISCLOSURE IS MADE BY YOU TO OTHER THAN CHOGORI PERSONNEL WITHOUT AUTHORIZATION FROM CHOGORI CORP.