

ITEM	MOLEX P/N	DESCRIPTION	QTY	UOM
A,B	2074580002	L1NK 396 Receptacle Housing -1X2	2	PC
C	2074590002	L1NK 396 TPA -1X2	2	PC
D	455703002	KKGen2 156 Tin/nickel Crimp 18-20 FORMED	4	PC
E	-	LABEL	1	PC

FROM	TO	CABLE DESCRIPTION	COLOR
A1	B2	18AWG PVC BK UL1015 HOOKUP WIRE	BLACK
A2	B1		

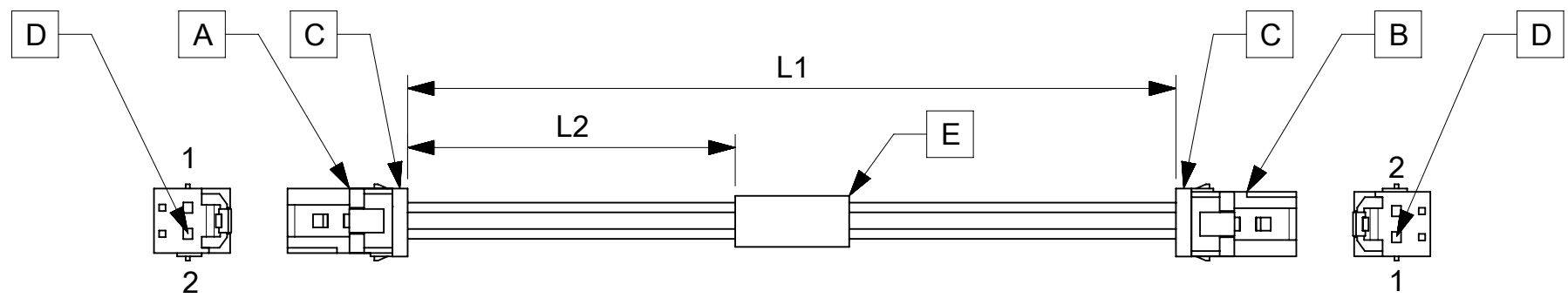


TABLE			
PART NUMBER	L1	L2	TITLE
369210200	75±5	25REF	Link396 2 Circuit 75MM
369210202	150±10	63REF	Link396 2 Circuit 150MM
369210203	300±15	138REF	Link396 2 Circuit 300MM
369210210	1000±20	488REF	Link396 2 Circuit 1000MM

**NOTES**

1. Cable assembly must pass 100% continuity and polarity test.
2. Label text must be 2mm max. In height with Arial font.
3. Connector view shown is from mating side.

P/N:36921XXXX — MOLEX PN  
 MOLEX  
 BATCH WK/YR

DATE	REV	DESCRIPTION	REVISED BY
2019.03.27	A	INITIAL RELEASE	SSHIVASHANKA

<b>SYMBOLS</b> ▽ = 0 ▽ = 0 ▽ = 0 ▽ = 0 ▽ = 0 ▽ = 0 ▽ = 0 ▽ = 0 ▽ = 0 ▽ = 0 ▽ = 0	THIS DRAWING CONTAINS INFORMATION THAT IS PROPRIETARY TO MOLEX ELECTRONIC TECHNOLOGIES, LLC AND SHOULD NOT BE USED WITHOUT WRITTEN PERMISSION		CURRENT REV DESC:			
	DIMENSION UNITS	SCALE	EC NO: 616867			SEE TABLE
	mm	NTS	DRWN: SSHIVASHANKA 2019/03/27			
	GENERAL TOLERANCES (UNLESS SPECIFIED)		CHK'D: MNARAYAN01 2019/05/08		PRODUCT CUSTOMER DRAWING	
	ANGULAR TOL ± °		APPR: MNARAYAN01 2019/05/08			
	4 PLACES ±		INITIAL REVISION:		DOCUMENT NUMBER	
	3 PLACES ±		DRWN: SSHIVASHANKA 2019/03/27			369210200
	2 PLACES ±		APPR: MNARAYAN01 2019/05/08		DOC TYPE	
	1 PLACE ±		DRAFT WHERE APPLICABLE MUST REMAIN WITHIN DIMENSIONS		PSD	
	0 PLACES ±		THIRD ANGLE PROJECTION		000	
DRAFT WHERE APPLICABLE MUST REMAIN WITHIN DIMENSIONS		DRAWING		REVISION		
A4-SIZE		SERIES		A		
36921		MATERIAL NUMBER		SHEET NUMBER		
SEE TABLE		CUSTOMER		1 OF 1		
GENERAL MARKET						

DOCUMENT STATUS	P1	RELEASE DATE	2019/05/08	14:41:12
-----------------	----	--------------	------------	----------