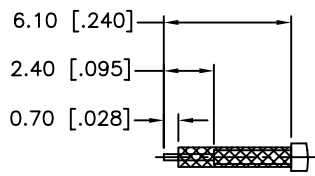
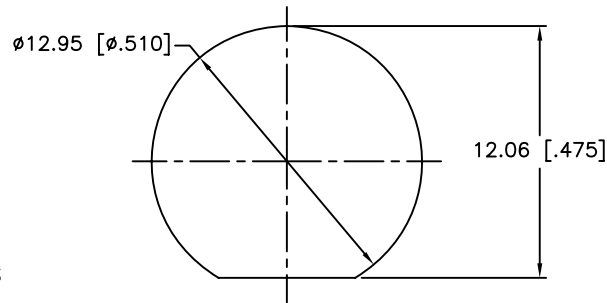


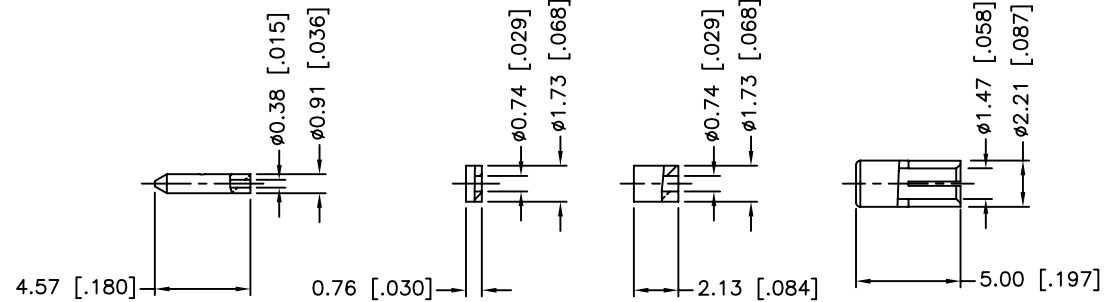
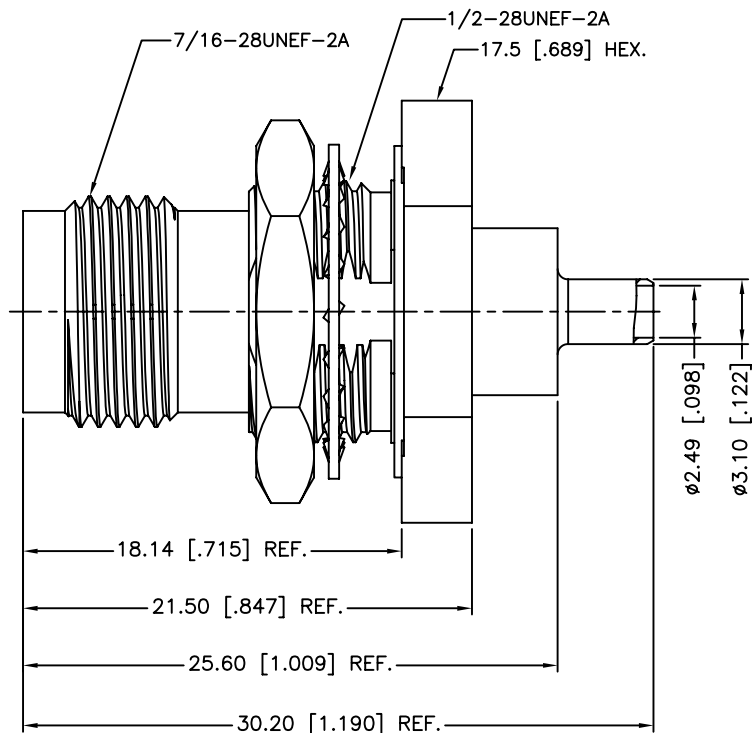
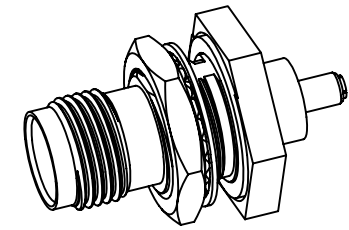
REV.	DATE	ECR NO.	DESCRIPTION
NC	11/04/09	XXXXXX	INITIAL RELEASE
A	11/08/11	2255	REPLACING ROUND FLANGES WITH HEX FLANGES
B	11/07/13	2551	ADD MAX PANEL THICKNESS, UPDATE DRAWING FORMAT



RECOMMENDED
CABLE STRIPPING DIM'S



RECOMMENDED
MOUNTING HOLE



1. IMPEDANCE: 50 OHM
2. FREQUENCY RANGE: 0-6 GHZ
3. VSWR: 1.3 MAX.
4. DIELECTRIC WITHSTANDING VOLTAGE: 200 VRMS, MIN.
5. DURABILITY: 500 CYCLES MIN.
6. TEMPERATURE RANGE: -65°C TO +165°C
7. CRIMPED FERRULE
HEX. CRIMP SIZE .100"
8. CRIMPED CONTACT PIN
USE 4-WAY INDENT CRIMP TOOL #47025
9. MAX. PANEL THICKNESS=3.5mm

QTY	DESCRIPTION	MATERIAL	FINISH	QTY
12	INNER FERRULE	BRASS	NICKEL	1
11	SLEEVE	BRASS	NICKEL	1
10	INSULATOR	PTFE	NATURAL	1
9	CONTACT PIN	BRASS	GOLD	1
8	HEX NUT	BRASS	NICKEL	1
7	O-RING	SILICONE	RED	1
6	LOCK WASHER	PHOSPHOR BRONZE	NICKEL	1
5	CONTACT PIN	PHOSPHOR BRONZE	GOLD	1
4	GASKET	SILICONE	RED	1
3	BODY	BRASS	NICKEL	1
2	INSULATOR	PTFE	NATURAL	1
1	BARREL	BRASS	NICKEL	1
	DESCRIPTION	MATERIAL	FINISH	QTY

UNLESS OTHERWISE SPECIFIED DIMENSIONS ARE IN MILLIMETERS. DIMENSIONS IN [] ARE IN INCHES AND FOR CUSTOMER REFERENCE ONLY.
UNLESS OTHERWISE SPECIFIED
TOLERANCES FOR MILLIMETERS ARE:
<math>< .05 \pm 0.05\text{mm}</math>
$0.5 - 6\text{mm} \pm 0.10\text{mm}$
$6 - 30\text{mm} \pm 0.20\text{mm}$
$30 - 120\text{mm} \pm 0.30\text{mm}$
ANGLES $\pm 1^\circ$
UNLESS OTHERWISE SPECIFIED
TOLERANCES FOR INCHES ARE:
<math>< .020 \pm 0.002''</math>
$.020 - .236 \pm 0.004''$
$.236 - 1.180 \pm 0.007''$
$1.180 - 4.724 \pm 0.012''$
ANGLES $\pm 1^\circ$
DO NOT SCALE DRAWING

APPROVALS	DATE
DRAWN M.ZHANG	11/07/13
CHECKED	
ISSUED	
SHEET 1 OF 1	
CAD FILE C:/CONNEX/122529-10.DWG	

Amphenol Connex

PART DESCRIPTION
**TNC BULKHEAD JACK, IP-67 COMPLIANT
(FOR 1.32 MM CABLE)**

PART NO. **122529-10**

DWG. NO. 122529-10.DWG	REV. B	SIZE A	SCALE NA
------------------------	--------	--------	----------