

MATERIALS AND FINISHES

BODY, COUPLING NUT: BRASS
PLATED SEE TABLE

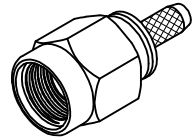
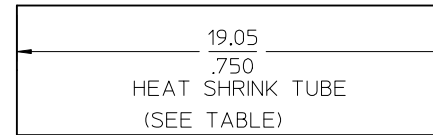
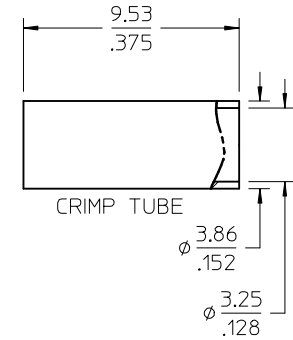
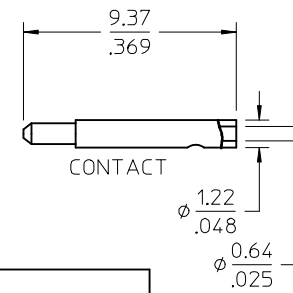
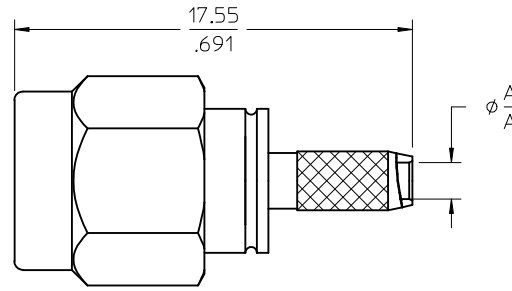
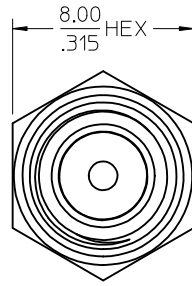
CRIMP TUBE: BRASS
PLATED NICKEL

CENTER CONTACT: BRASS
PLATED GOLD

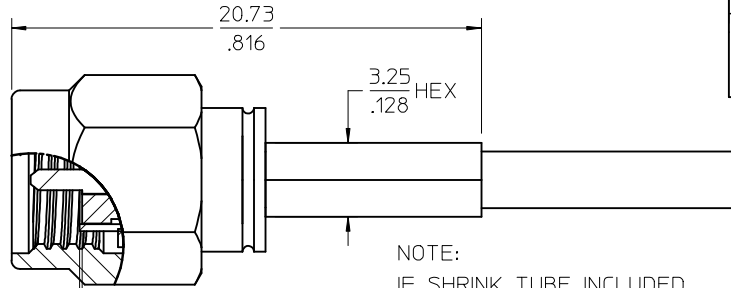
INSULATOR: TEFLON

SHRINK TUBE: VERSAFIT

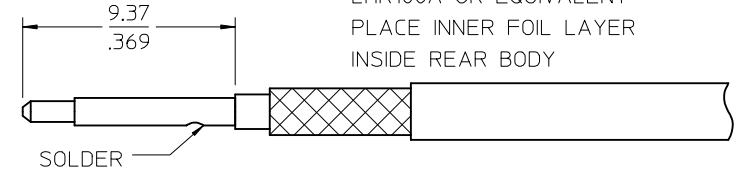
C-RING: BERYLLIUM COPPER



0.13±0.13
.005±.005
CONTACT/
INSULATOR

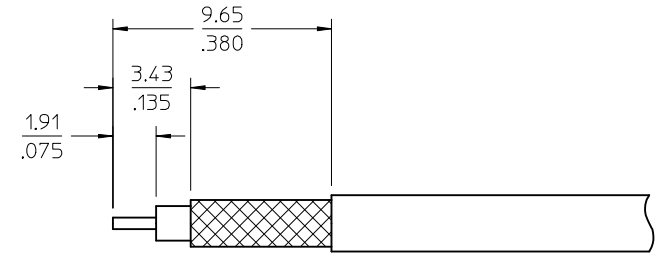


NOTE:
IF SHRINK TUBE INCLUDED
PLACE ONTO CABLE FIRST.



73251-0457 & -0458 IS FOR
LMR100A OR EQUIVALENT
PLACE INNER FOIL LAYER
INSIDE REAR BODY

SEE SD-73251-942 FOR MORE P/N



73251-0459	WITHOUT SHRINK TUBE/PACKED STANDARD TRAY	GOLD 1u"/1u"	1.613 / .0635
73251-0458	NO HEAT SHRINK TUBE/PACKED STANDARD TRAY	GOLD 10u"/1u"	1.727 / .0680
73251-0457	WITH HEAT SHRINK TUBE/PACKED STANDARD TRAY	GOLD 10u"/1u"	1.727 / .0680
73251-0456	73251-0450 PACKED ONE PIECE PER BAG	GOLD 10u"/1u"	1.613 / .0635
73251-0455	73251-0453 PACKED IN SMALL TRAY (20 CAVITY)	NICKEL	1.613 / .0635
73251-0454	WITHOUT SHRINK TUBE/PACKED STANDARD TRAY	NICKEL	1.613 / .0635
73251-0453	WITH SHRINK TUBE/PACKED STANDARD TRAY	NICKEL	1.613 / .0635
73251-0452	73251-0450, PACKAGED IN SMALL TRAY (20 CAVITY)	GOLD 10u"/1u"	1.613 / .0635
73251-0451	WITHOUT SHRINK TUBE/PACKED STANDARD TRAY	GOLD 10u"/1u"	1.613 / .0635
73251-0450	WITH HEAT SHRINK TUBE/PACKED STANDARD TRAY	GOLD 10u"/1u"	1.613 / .0635
PART NO.	DESCRIPTION	FINISH	MM / IN
		BODY/NUT	DIM A

PS-89675-3460	PRODUCT SPECIFICATION
MIL-STD-348A, FIG. 310.1	INTERFACE
SPECIFICATION	DESCRIPTION

73251-0459 TYPO WITHOUT SHRINK 73251-0458/-57 DIM A TYPO EC NO: URF2016-0166 DRW: INELIN 2015/09/03 CHKD: APPR: YCHENG 2015/09/03 A9	QUALITY SYMBOLS ▽=0 ▽=0	GENERAL TOLERANCES (UNLESS SPECIFIED) <table border="1"> <tr> <th></th> <th>mm</th> <th>INCH</th> </tr> <tr> <td>4 PLACES</td> <td>± .005</td> <td>± .0002</td> </tr> <tr> <td>3 PLACES</td> <td>± .005</td> <td>± .0002</td> </tr> <tr> <td>2 PLACES</td> <td>± .005</td> <td>± .0002</td> </tr> <tr> <td>1 PLACE</td> <td>± .005</td> <td>± .0002</td> </tr> </table> ANGULAR ± 2°		mm	INCH	4 PLACES	± .005	± .0002	3 PLACES	± .005	± .0002	2 PLACES	± .005	± .0002	1 PLACE	± .005	± .0002	DIMENSION STYLE MM/IN	SCALE DESIGN UNITS INCH	THIRD ANGLE PROJECTION
				mm	INCH															
4 PLACES	± .005	± .0002																		
3 PLACES	± .005	± .0002																		
2 PLACES	± .005	± .0002																		
1 PLACE	± .005	± .0002																		
DRAWN BY TEF DATE 2000/11/09 CHECKED BY SSS DATE 2000/11/09 APPROVED BY GMH DATE 2000/11/09 MATERIAL NO. SEE TABLE DOCUMENT NO. SD-73251-045	TITLE SMA PLUG STRAIGHT RG-316 50 OHM SMA-PC EWR-1766 MOLEX INCORPORATED	SHEET NO. 1 OF 1																		

DRAFT WHERE APPLICABLE MUST REMAIN WITHIN DIMENSIONS

THIS DRAWING CONTAINS INFORMATION THAT IS PROPRIETARY TO MOLEX INCORPORATED AND SHOULD NOT BE USED WITHOUT WRITTEN PERMISSION