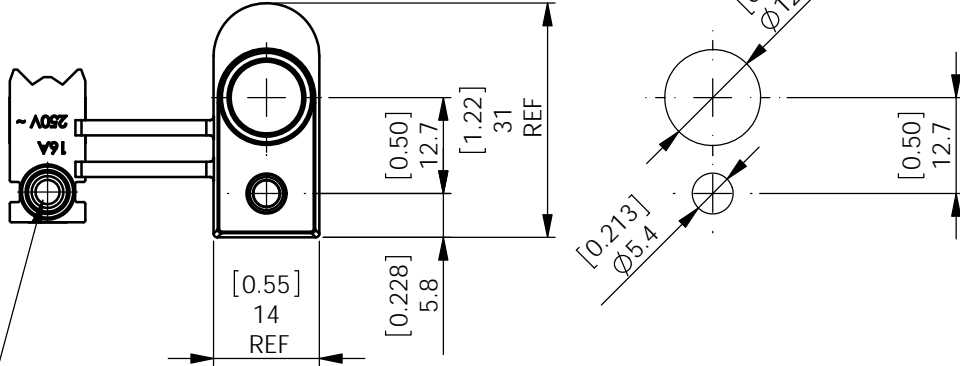
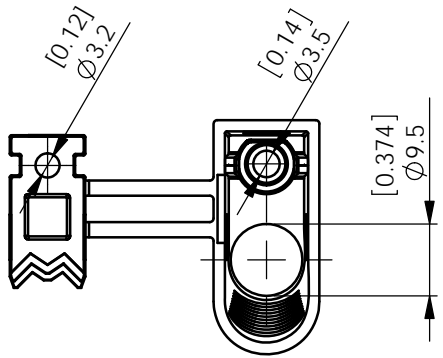
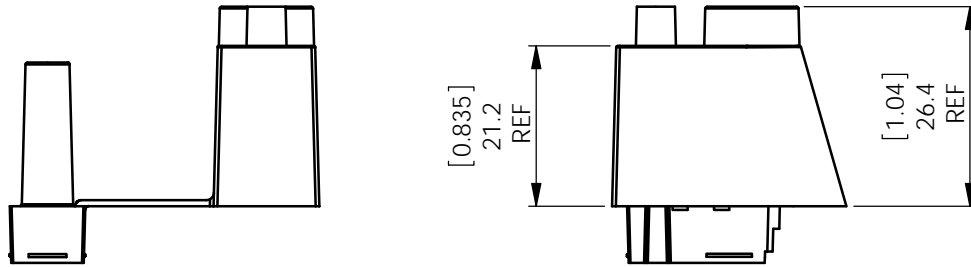


PANEL MOUNTING DETAILS
 PANEL THICKNESS
 0.5mm - 2mm [0.02 - 0.08]

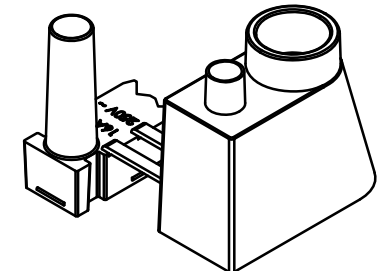


TO SUIT M3.5 - M4 [#8]
 SELF TAPPING SCREW
 FOR THERMOPLASTIC

TO ACCOMMODATE
 CABLE DIAMETERS
 6.8mm - 8.5mm [0.27 - 0.34]



REV	MODIFICATION	DATE	DRN
01	PRODUCTION RELEASE	26/02/08	I.C
02	CO2010173	09/04/08	I.C
03	CO2010270	02/07/08	I.C
04	CO2010395	22/09/08	I.C
05	CO2010955	15/07/10	SF
06	CO2011191	31/08/11	SF
07	CO2011215	10/11/11	SF



ALTERNATE UNITS FOR REFERENCE ONLY

INFORMATION CONTAINED IN THIS DOCUMENT IS CONFIDENTIAL TO RICHCO INTERNATIONAL Co. Ltd. AND MAY NOT BE DISCLOSED OR REPRODUCED IN WHOLE OR PART WITHOUT THEIR WRITTEN CONSENT.

RICHCO, INC. WWW.RICHCO-INC.COM	METRIC PRIMARY UNITS:mm IMPERIAL SECONDARY UNITS:[inches] GENERAL TOLERANCES ±0.25 [0.010] UNLESS OTHERWISE STATED 1 DECIMAL PLACE ± 2 DECIMAL PLACES ± ANGULAR ±1°	SHEET SIZE A4
---	---	-------------------------

MATERIAL: NYLON 6/6 UL94 V-2 (RMS-01)	COLOUR: BLACK
---	-------------------------

DESCRIPTION: MAINS LEAD CLAMP	PART No: MLC-1
---	--------------------------

DRG No: 08-014	NPR No: 2004-449	THIRD ANGLE
--------------------------	----------------------------	-------------

DRN I.C	DATE 26/02/08	CHKD S.F	DATE 03/03/08	SCALE 1:1	SHEET No. 1 OF 1
-------------------	-------------------------	--------------------	-------------------------	---------------------	----------------------------