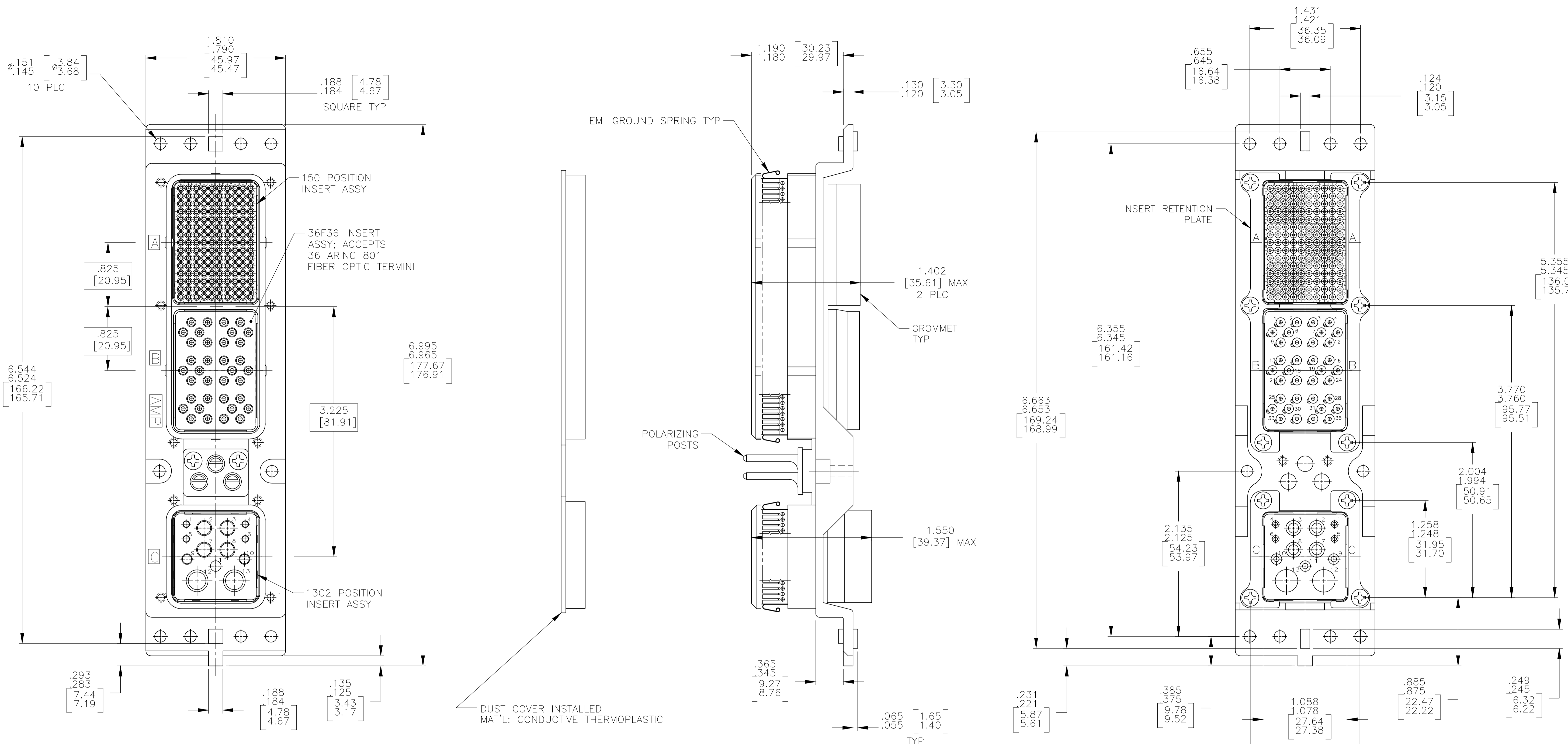


REVISIONS				
P	LTR	DESCRIPTION	DATE	APPD
N	REVISED PER	ECO-17-015513	19DEC2017	PHM CT



DUST COVER INSTALLED  
MAT'L: CONDUCTIVE THERMOPLASTIC

KEYING POSITION	CONTACTS & FILLER PLUGS INCLUDED AND NOT INSTALLED	PART NUMBER
-	MODULE A 208262-3; SZ 22 PIN CONTACT (QTY=150) MODULE C 208267-2; SZ 20 SOCKET CONTACT (QTY=4) 208270-2; SZ 16 SOCKET CONTACT (QTY=3) 208273-2; SZ 12 SOCKET CONTACT (QTY=4) 1484225-1 SZ 5 FILLER PLUG (QTY=2)	1757543-4 $\triangle_6$
-	MODULE A 208262-3; SZ 22 PIN CONTACT (QTY=150) MODULE C 208267-2; SZ 20 SOCKET CONTACT (QTY=4) 208270-2; SZ 16 SOCKET CONTACT (QTY=3) 208273-2; SZ 12 SOCKET CONTACT (QTY=4) 1484225-1 SZ 5 FILLER PLUG (QTY=2)	1757543-3 $\triangle_6$
-	MODULE A 208262-3; SZ 22 PIN CONTACT (QTY=150) MODULE C 208267-2; SZ 20 SOCKET CONTACT (QTY=4) 208270-2; SZ 16 SOCKET CONTACT (QTY=3) 208273-2; SZ 12 SOCKET CONTACT (QTY=4) 1484225-1 SZ 5 FILLER PLUG (QTY=2)	1757543-2 $\triangle_6$ $\triangle_7$
ANODIC OXIDATION PER MIL-A-8625	MODULE A 208262-3; SZ 22 PIN CONTACT (QTY=150) MODULE C 208267-2; SZ 20 SOCKET CONTACT (QTY=4) 208270-2; SZ 16 SOCKET CONTACT (QTY=3) 208273-2; SZ 12 SOCKET CONTACT (QTY=4) 1484225-1 SZ 5 FILLER PLUG (QTY=2)	1757543-1 $\triangle_6$ $\triangle_7$
36F36 FINISH	36F36 MATERIAL	KEYING POSITION

- CONNECTOR DIMENSIONS ARE PER ARINC 600 SPECIFICATION.
  - CONNECTOR IS SUPPLIED WITH CONTACTS (PER TABLE) NOT ASSEMBLED.
  - KEYING SHOWN IN POSITION "01" FOR ILLUSTRATION ONLY. CONNECTORS SHIPPED WITH KEYING INSTALLED IN POSITION PER TABLE. FOR POSITION "00" KEYING HARDWARE SHIPPED UNASSEMBLED.
  - MODULE B (36F36) IS SUPPLIED WITHOUT CONTACTS. MUST BE ORDERED SEPARATELY.
  - CONNECTOR IS SUPPLIED WITH A DUST COVER INSTALLED
- $\triangle_6$  1757543-1, -2, -3 & -4 ARE NOT RoHS COMPLIANT.  
 $\triangle_7$  1757543-1, -2 ARE OBSOLETE AND SUPERSEDED BY 1757543-3.

COMPONENT	MATERIAL	FINISH
SHELL	DIE CAST ALUMINUM PER ASTM-B-85	ELECTROLESS NICKEL PER MIL-C-26074
INSERT RETENTION PLATES	ALUMINUM ALLOY PER ASTM-B-209	ELECTROLESS NICKEL PER MIL-C-26074
SCREWS	STAINLESS STEEL	PASSIVATED
POLARIZING POST	ZINC ALLOY PER ASTM-B-86	-
150 & 13C2 INSERTS	THERMOSET OR THERMOPLASTIC PPS PER MIL-M-24519	-
POLARIZING POST RETAINING PLATE	ALUMINUM ALLOY PER ASTM-B-209	BLUE ANODIZED PER MIL-A-8625
36F36 INSERT	SEE TABLE	SEE TABLE
EMI GROUND SPRING	BERYLLIUM COPPER 172 (ALLOY 29)	ELECTRODEPOSITED NICKEL PER AMS-QQ-N-290

THIS DRAWING IS A CONTROLLED DOCUMENT.

DTN: C.C.THOMAS 12-1-04  
 CHK: S.GLATFELTER 12-1-04  
 APPD: S.GLATFELTER 12-2-04

TE Connectivity

NAME: PLUG ASSY, SIZE 2, ARINC 600 (150/36F36/13C2)

SIZE: A1  
 CAGE CODE: 00779  
 DRAWING NO: 1757543

SCALE: 3:2 SHEET 1 OF 1 REV N