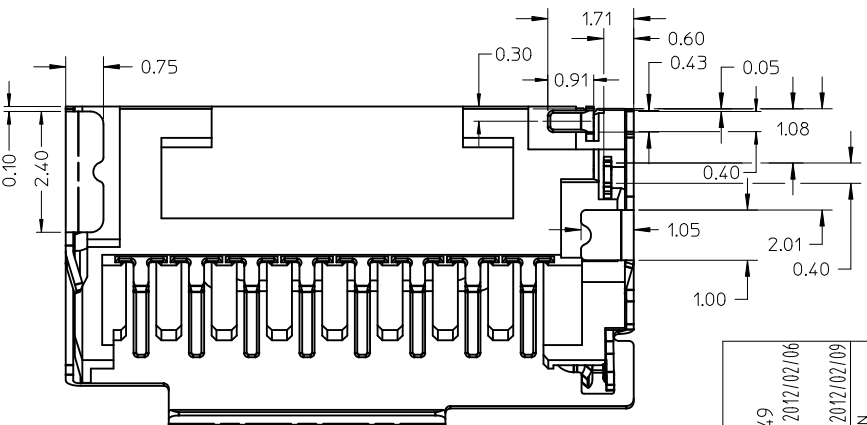
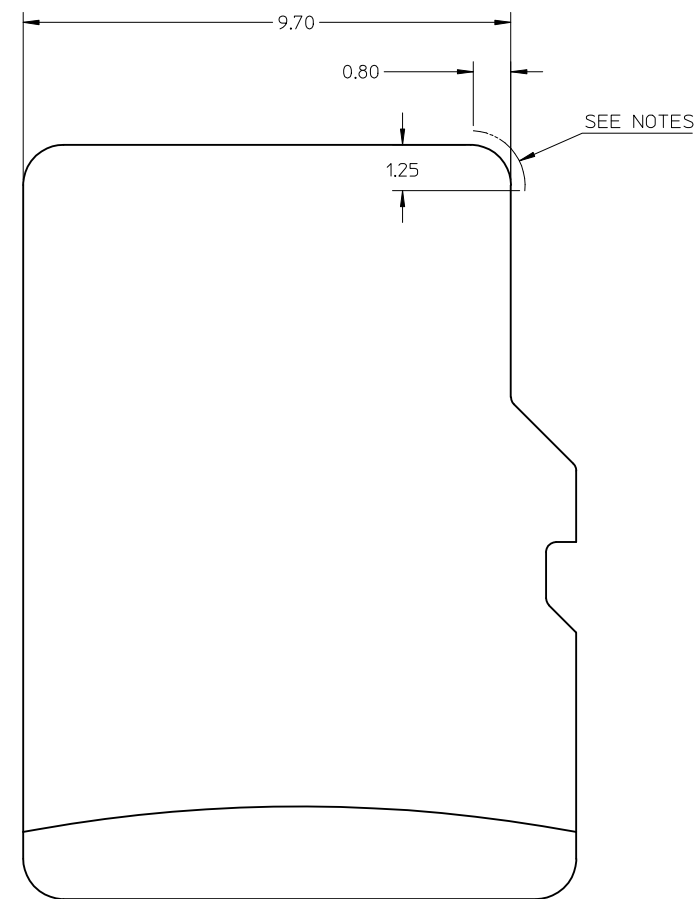
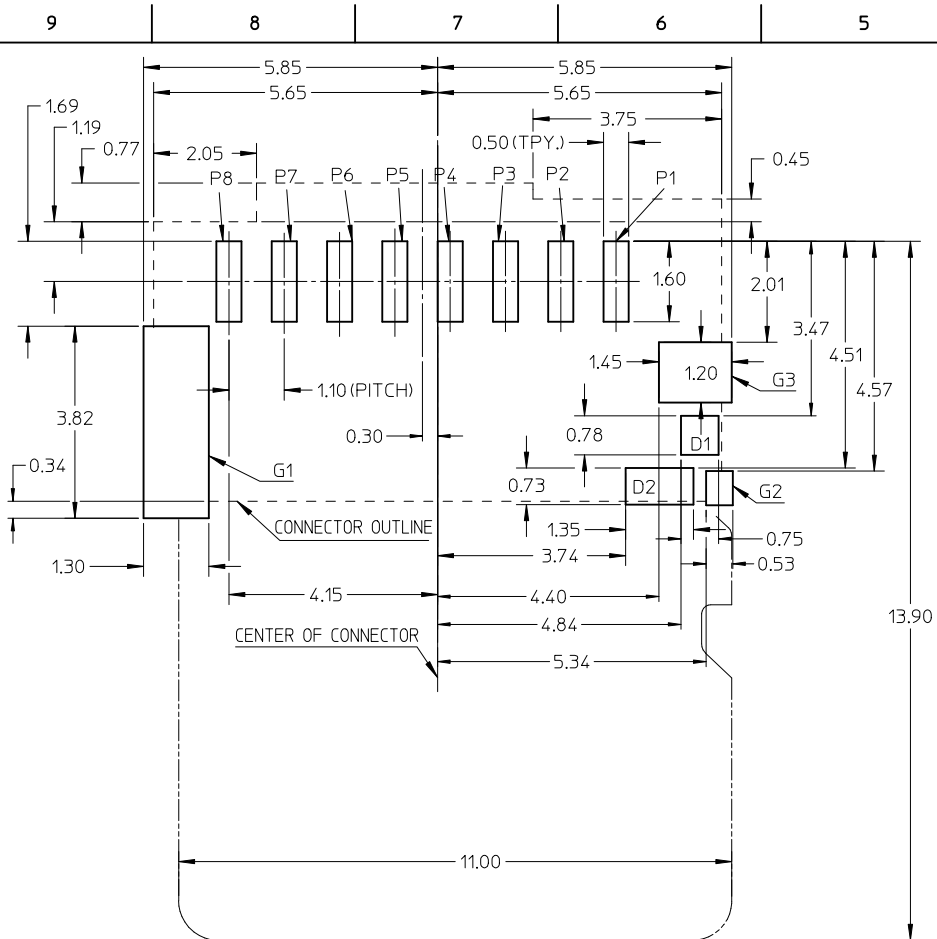


NOTE:
 1 MATERIAL:
 1-1 HOUSING : LCP, 30% G/F, UL 94V-0, BLACK
 1-2 SIGNAL TERMINAL AND DETECT TERMINAL : PHOSPHOR BRONZE
 1-3 METAL SHELL : STAINLESS STEEL
 2 FINISH:
 2-1 SIGNAL TERMINAL : 1.25 MICRON MIN. NICKEL UNDER-PLATED, 0.38 MICRON MIN. GOLD ON CONTACT AREA, 1.25 MICRON MIN. TIN PLATED ON SOLDER AREA.
 2-2 METAL SHELL : 1.25 MICRONS MIN TIN PLATING OVER ALL, UNDER PLATING 1.25 MICRONS MIN NICKEL.
 2-3 DETECT PIN : 1.25 MICRON NICKEL UNDER-PLATED, GOLD FLASH PLATED ON CONTACT AREA, 1.25 MICRON MIN. TIN PLATED ON SOLDER AREA
 3 PRODUCT SPEC: PS-105126-001, PACKAGE SPEC: PK-105126-001.
 4 THE FIRST * MEANS YEAR, E.G. 1 REPRESENTS 2011, THE LAST * MEANS SHIFT CODE OF A, B OR C, THE MIDDLE THREE *S MEAN THE DAY NUMBER OF YEAR, E.G. 012 REPRESENTS 2011/01/12.
 5 COMPLIANT TO RoHS DIRECTIVE 2002/95/EC AND ELV DIRECTIVE 2000/53/EC.



NEW RELEASE IEC NO: SH2012-0249 DRWG:GLL1 CHKD: APPR:AYIN REV A	DESCRIPTION 2012/02/06 2012/02/09	QUALITY SYMBOLS	GENERAL TOLERANCES (UNLESS SPECIFIED)		DIMENSION STYLE		SCALE	DESIGN UNITS	THIRD ANGLE PROJECTION	
		$\nabla = 0$ $\nabla = 0$ $\nabla = 0$	mm	INCH	MM ONLY	10:1	METRIC			
		4 PLACES ± --- ± --- 3 PLACES ± --- ± --- 2 PLACES ± 0.15 ± --- 1 PLACE ± 0.25 ± ---	DRAWN BY GLL1 DATE 2012/02/06		TITLE		20 DEGREE TFR HEADER W/DETECT PIN, SMT TYPE			
		ANGULAR ± 3 °	DRAFT WHERE APPLICABLE MUST REMAIN WITHIN DIMENSIONS		CHECKED BY XQ ZAHNG DATE 2012/02/06		MOLEX INCORPORATED			
			MATERIAL NO. 105126-1000		APPROVED BY AYIN DATE 2012/02/09		DOCUMENT NO. SD-105126-100		SHEET NO. 1 OF 2	
			SIZE A3		THIS DRAWING CONTAINS INFORMATION THAT IS PROPRIETARY TO MOLEX INCORPORATED AND SHOULD NOT BE USED WITHOUT WRITTEN PERMISSION					



D2	DET
D1	POL
G3	GND
G2	GND
G1	GND
P8	DAT1
P7	DAT0
P6	VSS
P5	CLK
P4	VDD
P3	CMD
P2	CD/DAT3
P1	DAT2
PIN NUMBER	PIN NUMBER

RECOMMEND PCB LAYOUT TOLERANCE : +/-0.05

--- CONNECTOR PROFILE

----- CARD PROFILE

NOTES:

NO CONDUCTIVE EXPOSURE TRACE IS ALLOWED ON THE SIDE FACE OF THE CARD AT THIS AREA.

NEW RELEASE EC NO: SH2012-0249 DRWG: GLL CHKD: APPR: AYIN REV: A	2012/02/06 2012/02/09	QUALITY SYMBOLS $F_{\Delta} = 0$ $F_{\nabla} = 0$ $F_{\square} = 0$	GENERAL TOLERANCES (UNLESS SPECIFIED) <table border="1"> <tr><th colspan="2">mm</th><th>INCH</th></tr> <tr><td>4 PLACES</td><td>± 0.15</td><td>± 0.006</td></tr> <tr><td>3 PLACES</td><td>± 0.20</td><td>± 0.008</td></tr> <tr><td>2 PLACES</td><td>± 0.25</td><td>± 0.010</td></tr> <tr><td>1 PLACE</td><td>± 0.30</td><td>± 0.012</td></tr> </table>	mm		INCH	4 PLACES	± 0.15	± 0.006	3 PLACES	± 0.20	± 0.008	2 PLACES	± 0.25	± 0.010	1 PLACE	± 0.30	± 0.012	DIMENSION STYLE MM ONLY	SCALE 10:1	DESIGN UNITS METRIC	THIRD ANGLE PROJECTION
	mm		INCH																			
	4 PLACES	± 0.15	± 0.006																			
	3 PLACES	± 0.20	± 0.008																			
2 PLACES	± 0.25	± 0.010																				
1 PLACE	± 0.30	± 0.012																				
DRAWN BY: GLL CHECKED BY: XQ ZAHNG APPROVED BY: AYIN	DATE: 2012/02/06 DATE: 2012/02/06 DATE: 2012/02/09	TITLE: 20 DEGREE TFR HEADER W/DETECT PIN, SMT TYPE	MATERIAL NO. 105126-1000	DOCUMENT NO. SD-105126-100	SHEET NO. 2 OF 2																	
DRAFT WHERE APPLICABLE MUST REMAIN WITHIN DIMENSIONS			THIS DRAWING CONTAINS INFORMATION THAT IS PROPRIETARY TO MOLEX INCORPORATED AND SHOULD NOT BE USED WITHOUT WRITTEN PERMISSION																			
			MOLEX INCORPORATED																			