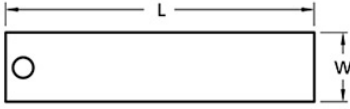




## SHIM12/19-A-KIT

Ruland SHIM12/19-A-KIT, Pack of Shims for Jaw & Oldham Couplings, Aluminum, 32 Layers, 1.250" (31.8mm) Length, 0.210" (5.3mm) Width



### Description

SHIM12/19-A-KIT is a pack of aluminum shims designed to aid in the installation of Ruland manufactured zero-backlash jaw and oldham couplings. It comes with 32 layers that can be peeled off with a knife or other sharp object. Each layer is 1.250" (31.8mm) long, 0.210" (5.3mm) wide, and .002" (.05mm) thick and made of 5052 aluminum for corrosion resistance, rigidity, and durability. It is used during the installation of Ruland zero-backlash jaw and oldham couplings with an outer diameter identifier of 12/19. SHIM12/19-A-KIT ensures proper spacing between the hubs and insert allowing the coupling to reach its full misalignment capabilities. The shim is simply slid into the space between the hub and insert while the user is tightening coupling hardware to its recommended seating torque and then removed once assembly is complete. SHIM12/19-A-KIT is manufactured by Georg Martin GmbH in Germany and RoHS3 and REACH compliant.

### Product Specifications

<b>Length (L)</b>	1.250 in (31.8 mm)	<b>Width (W)</b>	0.210 in (5.33 mm)
<b>Layer Thickness</b>	0.002 in (0.05 mm)	<b>Layer Thickness Tolerance</b>	+0.0003/-0.0000 mm
<b>Pack Thickness</b>	0.063 in (1.6 mm)	<b>Number of Layers</b>	32
<b>Weight (lbs)</b>	0.001600	<b>Layers Needed for Jaw Couplings</b>	10
<b>Layers Needed for Oldham Couplings</b>	2	<b>Material Specification</b>	Aluminum Alloy 5052
<b>Manufacturer</b>	Georg Martin GmbH	<b>Country of Origin</b>	Germany
<b>Tariff Code</b>	7616.99.5120	<b>UNSPC</b>	31231404