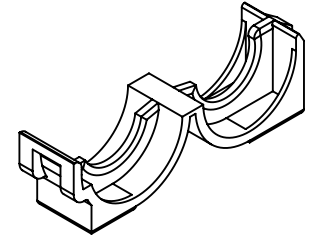
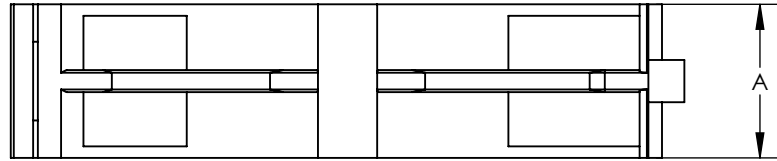


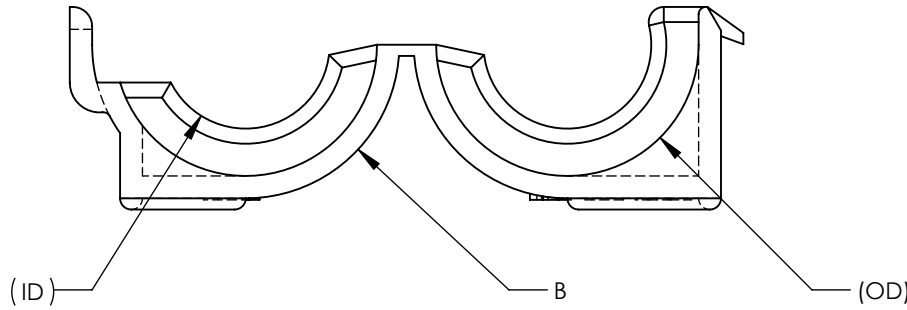
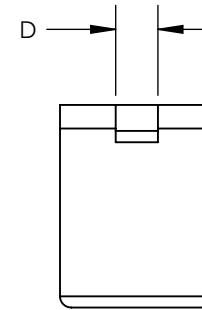
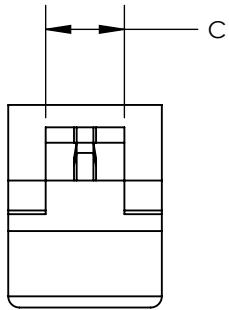
SW



Revision level			Revision Record	Changed	Date	Approved	Date
Drawing	State	Part					
02.1	Design Release	-	SEE ECN# 015099	GAL	4/23/2019	KAC	4/23/2019



ISOMETRIC VIEW
SCALE 1 : 1



GLOBAL PART DESCRIPTION	GLOBAL PROJECT NUMBER	MATERIAL	COLOR	SUPERCEDES DCS PART NUMBER	FOR CONDUIT ID	CONDUIT DIAMETER		DIM "A"	DIM "B"	DIM "C"	DIM "D"
						(OD)	(ID)				
CTHC-EC3-PP-BK	18-1954	PP	BLACK	N/A	8.89 [.350]	12.6 [0.49]	9.91 [0.390]	12.75 [.502]	R 8.2 [0.32]	7.62 [0.300]	6.40 [.252]
CTHC-EC4-PP-BK	18-2015	PP	BLACK	08911378	10.31 [.406]	15.2 [0.60]	11.1 [0.44]	10.16±0.25 [.400±.010]	R 10.16 [0.400]	5.21±0.38 [.205±.015]	2.8 [0.11]
CTHC-EC5-PP-BK	18-2016	PP	BLACK	08911377	12.52 [.493]	17.8 [0.70]	13.1 [0.52]	10.16±0.25 [.400±.010]	R 10.16 [0.400]	5.21±0.38 [.205±.015]	2.5 [0.10]
CTHC-EC7-PP-BK	18-2017	PP	BLACK	08917625	19.05 [.750]	25.1 [0.99]	19.3 [0.76]	10.16±0.25 [.400±.010]	R 15.24 [0.600]	5.21±0.38 [.205±.015]	2.5 [0.10]

Material
SEE CHART

Units: **millimeters**
 Dimension without tolerances details to:
 .XXX = ±.013
 .XX = ±.13
 .X = ±.3
 None = ±.8
 < = ±0.5°
 Dimension Formatted mm/[in]

The copyright of this drawing is reserved by HellermannTyton. It is issued on condition that it is not reproduced, copied, or disclosed to a third party, either wholly or in part, without the consent of HellermannTyton.

Drawn CTF 08/24/2018
 Approved KAC 08/24/2018
HellermannTyton
 North America
 Email: corp@htamericas.com
 Web: www.hellermann.tyton.com

Article/Type-No SEE CHART
 Title **LOOM TUBING END CLAMP**
 Drawing-No 18-2015-001-CSU
 Production : Phase

Scale 2:1
 Project Number PRP 18-2015
 Format AH
 Sheet 1/1