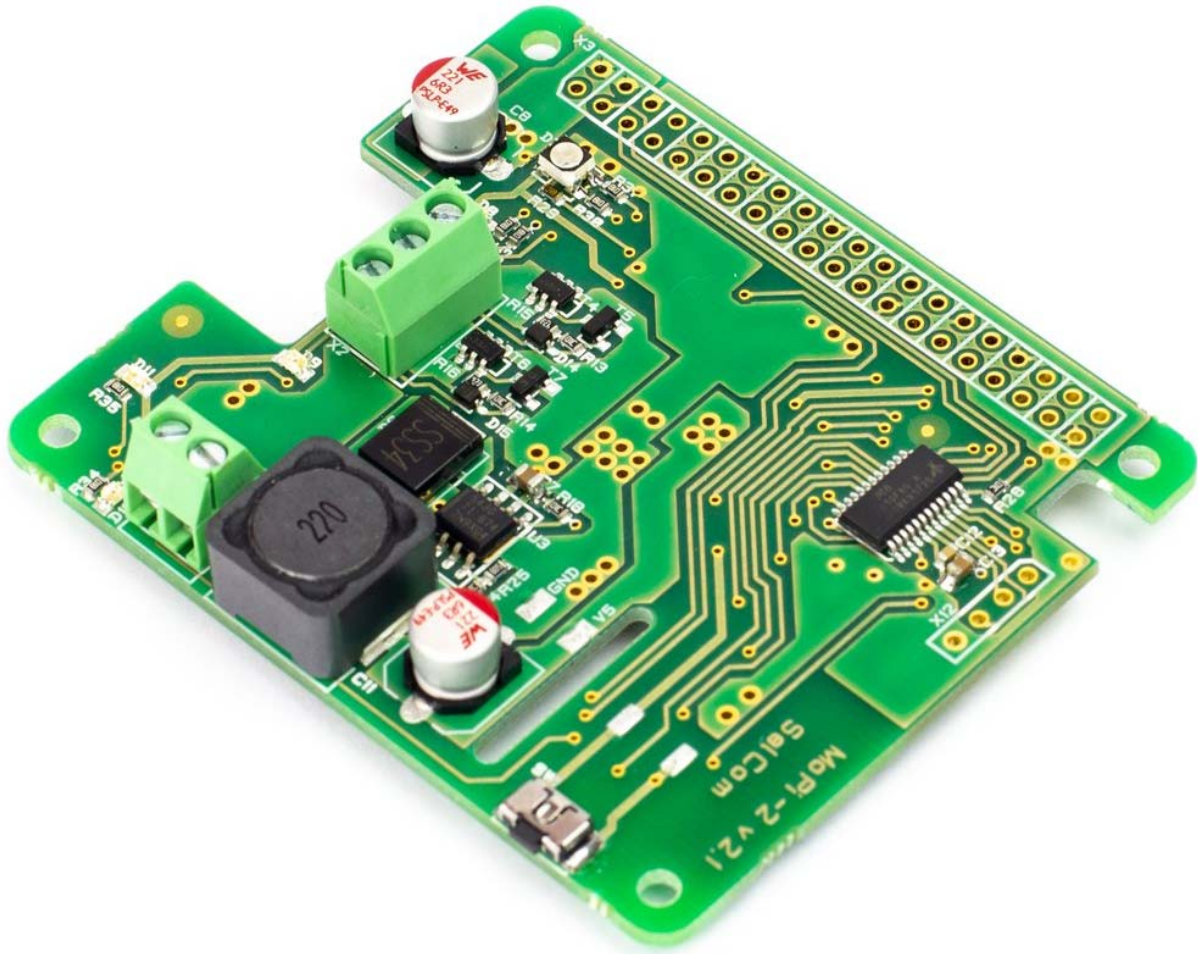


PIMORONI

Purveyors of fine Maker goods, worldwide



MoPi 2: Hot-Swap Mobile Power for the Pi MOPI003

MoPi-2 is mobile and 24/7 power for the Pi 2 and Pi 3 boards. On your bike, up a tree, or for your home server: we've got you covered!

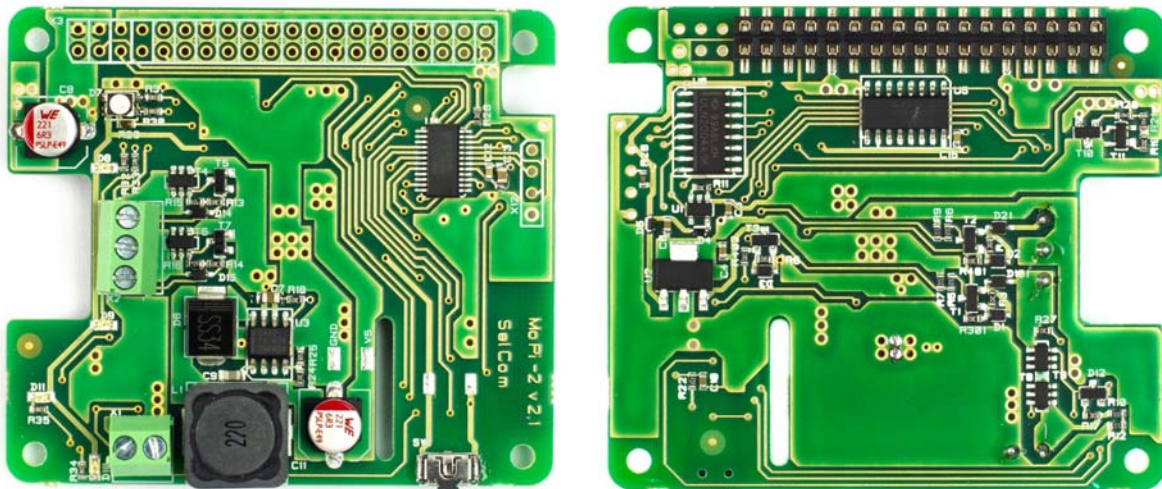
MoPi-2 features:

- Two power inputs via standard screw terminals — for standard batteries, car power sockets, old laptop, supplies, solar panels, wall adapters and more
- Hot-swap power replacement without stopping work
- Shutdown the Pi cleanly when batteries discharge
- Right-angled power switch accessible even another PCB is stacked on top
- Usable as a UPS (uninterruptible power supply) by attaching both batteries and mains
- Wide input voltage range: 6.5V to 24V 1
- Ability to deliver up to 2.5A @ +5V to the Pi and attached additional PCBs or devices
- Low power consumption: 15mA when is working, 0.5mA when is sleeping and only 15 μ A when is off ! (more than 10 times less than the average battery self discharge rate)
- Auto-off when input voltage reaches 6.0V, protecting the batteries from over-discharging.
- Additional 2-pin terminal for an external battery charger (this is just a gate, all charging functionality depends on the charger itself)
- On-board LED indicators and on screen Linux system notifications
- Configuration of multiple battery chemistries and number of cells from a UI on the Pi
- Full API in Python, plus a shell-friendly command-line interface
- Very low-profile (3.5 mm), bottom entry, 40-pin GPIO connector allowing stacking of other boards on top of the MoPi-2
- PCB pads for external power switch and +5V
- Control of external 5V relay
- Two-way communication via the I2C bus
- Remote power-off: tell MoPi-2 to power down the Pi when logged-in remotely (after a clean shutdown, of course)
- Timer-based wake-up: tell MoPi-2 what time you want your Pi to wakeup, then power it down and MoPi-2 will boot the Pi as requested
- Supports Raspberry Pi 2, Raspberry Pi 3 and Raspberry Pi 3 B+ models.

Many more details, including a setup guide, can be found [here](#)

Warnings!!!

- DO NOT plug MoPi-2 onto your Pi while the Pi is powered up!
- DO NOT touch electronic components when they're powered up — you may damage them, or burn your fingers!
- AVOID handling circuit boards when charged with static!
- ALWAYS read the small print on all components supplied with your MoPi-2
- ALWAYS treat batteries and other power supplies with respect — if abused the energy they contain may surprise you in dangerous ways!
- DO NOT feed MoPi-2 to your dog, eat nuts if you're allergic to them, or lose your sense of humour



<https://shop.pimoroni.com/products/mopi-2-hot-swap-mobile-power-for-the-pi> 8-20-18