

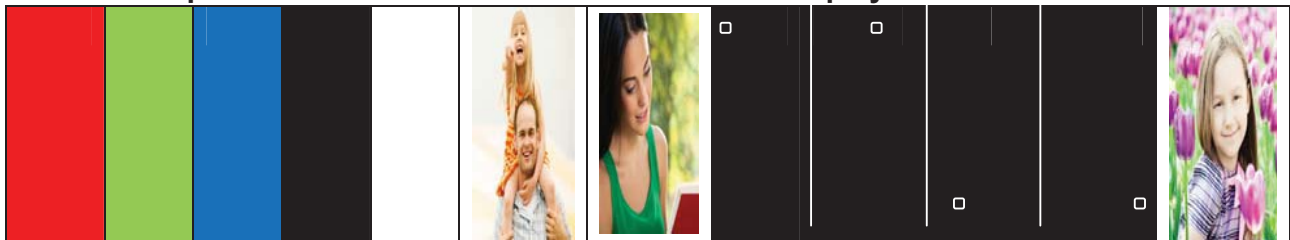
## Main Parts

1. Power Supplier with AC110V-240V input and DC 5V/2A output. The tester can also be powered via USB port.
2. Button:
  - a. ON/OFF BUTTON (soft-turn on/off button): When the off button is pressed, the FPC stops the signal output and customer can change screen.
  - b. PAUSE BUTTON: Freezes the screen to the current image. Press the Pause Button again to unfreeze.
  - c. RESET BUTTON: System reset.
3. Test Port: Internal debug port.
4. FPC LINKER: FPC connector.
5. USB Port:
  - a. Change internal files from the drive in order to test different TFT sizes via USB port.
  - b. Works as a power supplier. The current consumption of this board is less than 300mA.

## ✚ Operation:

1. Connect the TFT properly to the Demo Board through the FPC Linker.
2. Turn on by pressing the On/Off Button. The screen will display black, white, red, green, blue, black, white, demo pictures and black with white circles (for TFT w/ RTP only) repeatedly.
3. Press the Pause Button to pause with the current display, press the Pause Button again to display the previous screen.
4. To change the TFT size, press the On/Off Button then remove the FPC in the FPC Linker.
5. For TFT with RTP: press the white circle to proceed to the next image

## ✚ Sequence of Demo Photos in the TFT will be displayed as below:



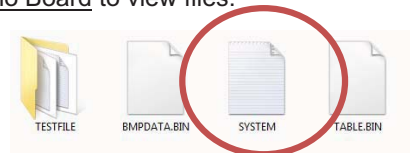
RED GREEN BLUE BLACK WHITE PIC 1 PIC 2 UPPER UPPER LOWER LOWER PIC 3  
LEFT\* RIGHT\* LEFT\* RIGHT\*

\*For TFT w/ RTP only, touch the circle to proceed to the next image

## ✚ Operation to test different TFT sizes:

1. Connect the TFT to the Demo Board through the FPC Linker.
2. Connect the Demo Board to a Computer or Laptop using the USB Cable.
3. Open the folder from the removable disk of the Demo Board to view files.
4. In the folder, open SYSTEM.txt and change the code inside to display the appropriate TFT. Refer to the table below:

Part No.	CODE
<u>AFY240320A0-2.4N6NTN</u>	AFY240
<u>AFY240320A0-2.4N6NTN-R</u>	240RT
<u>AFY240320A0-2.8N6NTN</u>	AFY280
<u>AFY240320A0-2.8N6NTN-R</u>	280RT

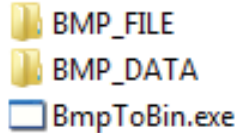


5. Save the file.
6. Turn on the Demo Board by pressing the On/Off Button.
7. Press the Reset Button if the changes are not yet seen.

## To Change the Demo Photos:

1. Download the JAZZ-CPU-D1 Photo.zip file from the website.  
<http://www.orientdisplay.com/evaluation-boards.html>

2. Open the file and you can get three files as below.

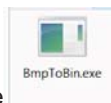


3. Choose the pictures that you want to be displayed in the TFT and copy it to the BMP\_FILE folder.
  - a) Image file type should be Bitmap (.bmp).
  - b) Resolution of the pictures should match the required resolution of the TFT that you want to display. If your pictures do not match the required resolution, other software may be used to convert the photo to the correct resolution (e.g. Adobe Photoshop)

P/N	Resolution Requirement
<u>AFY240320A0-2.4N6NTN</u>	240 x 320
<u>AFY240320A0-2.4N6NTN-R</u>	240 x 320
<u>AFY240320A0-2.8N6NTN</u>	240 x 320
<u>AFY240320A0-2.8N6NTN-R</u>	240 x 320

- c) Rename the pictures in chronological order, starting with 000 (e.g. 000, 001, 002, 003 .....). If the pictures are not renamed accordingly, it will not be displayed.

4. Click and run BmpToBin.exe file

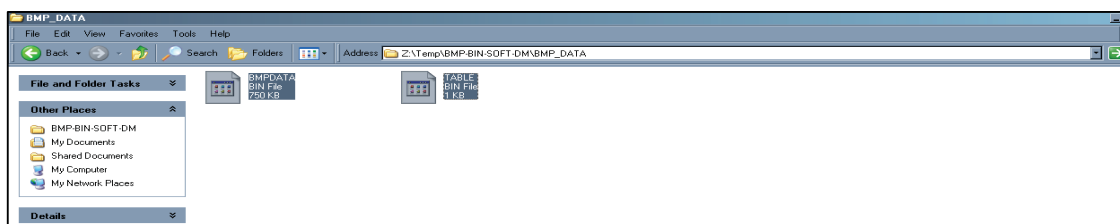


When the files are being processed, a black screen will pop-up. The bigger the file, the

longer it takes. Two new files will be generated in



5. Open the folder  BMP\_DATA and select/ copy the two files inside.



6. Connect the Demo Board to the Computer using the USB Cable.
7. Open the removable disk of the Demo Board.

Paste both  BMPDATA  
BIN File  
750 KB and  TABLE  
BIN File  
1 KB directly into the folder of the Demo Board to replace the two existing bin files.

8. Connect the TFT to the Demo Board and turn it on. If it doesn't work, just press the reset button.