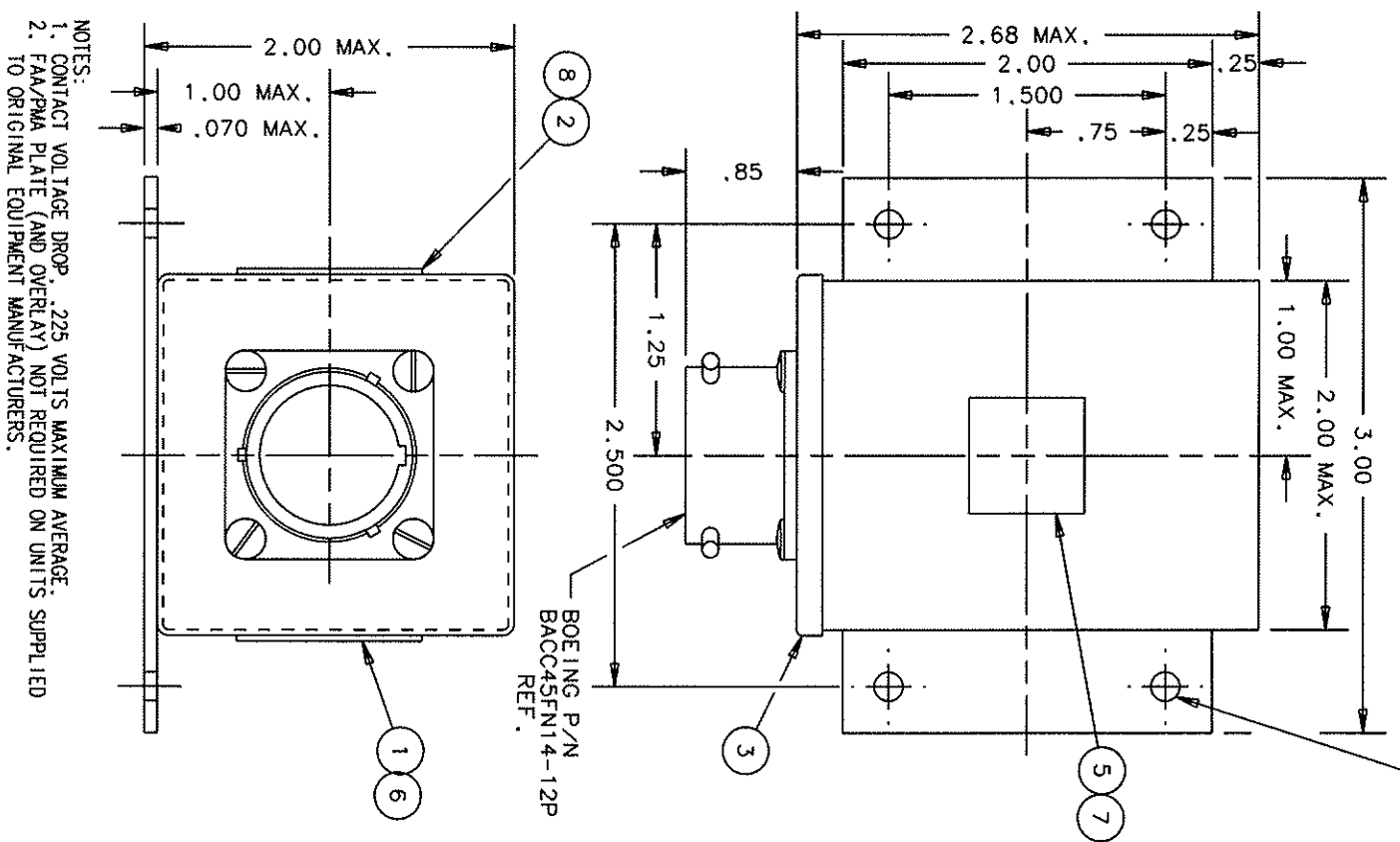


FAA-PMA

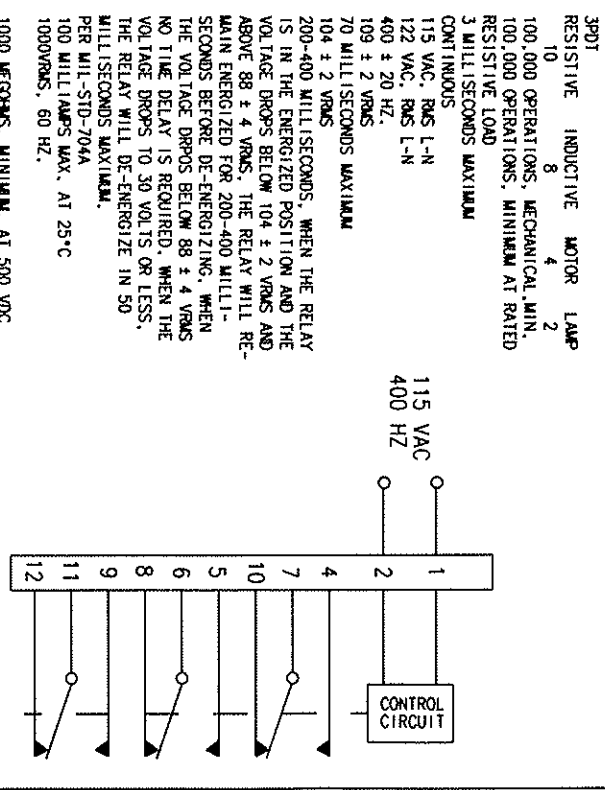
REV.	DESCRIPTION	DATE	APPROVED
1	UPDATE SPECIFICATIONS	93/03/10	W.S.
2	ADDED TOLERANCES	94/06/29	R.S.
3	NOTE 2 ADDED	98/05/04	R.S.
4	BOEING P/N* & *100,000 MECH OPER* ADDED, 3 AXIS WAS AXES	99/05/24	RS

.156 +.010 DIA. HOLE
4 MITG. HOLES



NOTES:
1. CONTACT VOLTAGE DROP, .225 VOLTS MAXIMUM AVERAGE.
2. FAA/PMA PLATE (AND OVERLAY) NOT REQUIRED ON UNITS SUPPLIED TO ORIGINAL EQUIPMENT MANUFACTURERS.

- ELECTRICAL
 - CONTACT FORM
 - CONTACT RATING (AMPS PER POLE AT 155 VAC AND 28 VDC)
 - CONTACT LIFE
 - CONTACT BOUNCE
 - DUTY CYCLE
 - NOM. OPERATING VOLTAGE
 - MAX. OPERATING VOLTAGE
 - OPERATING FREQUENCY
 - PICK-UP VOLTAGE
 - PICK-UP TIME
 - DROP-OUT VOLTAGE
 - DROP-OUT TIME DELAY
- 3PDT
 - RESISTIVE
 - INDUCTIVE
 - MOTOR
 - LAMP
- 100,000 OPERATIONS, MECHANICAL, MIN.
- 100,000 OPERATIONS, MINIMUM AT RATED RESISTIVE LOAD
- 3 MILLISECONDS MAXIMUM CONTINUOUS
- 115 VAC, RMS L-N
- 122 VAC, RMS L-N
- 400 ± 20 HZ.
- 109 ± 2 VRMS
- 70 MILLISECONDS MAXIMUM
- 104 ± 2 VRMS
- 200-400 MILLISECONDS, WHEN THE RELAY IS IN THE ENERGIZED POSITION AND THE VOLTAGE DROPS BELOW 104 ± 2 VRMS AND ABOVE 88 ± 4 VRMS, THE RELAY WILL RE-MAIN ENERGIZED FOR 200-400 MILLI-SECONDS BEFORE DE-ENERGIZING, WHEN THE VOLTAGE DROPS BELOW 88 ± 4 VRMS NO TIME DELAY IS REQUIRED, WHEN THE VOLTAGE DROPS TO 30 VOLTS OR LESS, THE RELAY WILL DE-ENERGIZE IN 50 MILLISECONDS MAXIMUM.
- PER MIL-STD-704A
- 100 MILLIAMPS MAX. AT 25°C
- 1000VRMS, 60 HZ.
- 1000 MEGOHMS, MINIMUM, AT 500 VDC
- 55°C TO +85°C (OPERATING)
- 55°C TO +125°C (NON-OPERATING)
- PER BOEING SPECIFICATION
- DE-44599 CATEGORY C ZONE 1
- 30 G'S, 11 MILLISECOND, 1/2 SINE, 3 AXIS
- 20 G'S IN ANY AXIS
- 0 TO 80,000 FEET
- 10 OUNCES MAX.
- ALUMINUM METAL CAN, MOUNTING FLANGES AND COVER, SENSOR POTTED
- BLACK LAQUER PAINT
- SOLDER SEALED COVER, HERMETIC SEALED CONTACTS



8	7	6	5	3	2	1
1	1	1	1	1	1	1
39529-038	39529-047	39529-073	39529-073	39529-073	39529-073	39529-073
OVERLAY	OVERLAY	OVERLAY	OVERLAY	OVERLAY	OVERLAY	OVERLAY
PLATE - FAA / PMA	PLATE - FAA / PMA	PLATE - FAA / PMA	PLATE - FAA / PMA	PLATE - FAA / PMA	PLATE - FAA / PMA	PLATE - FAA / PMA
RELAY ASSEMBLY - PRIMARY	RELAY ASSEMBLY - PRIMARY	RELAY ASSEMBLY - PRIMARY	RELAY ASSEMBLY - PRIMARY	RELAY ASSEMBLY - PRIMARY	RELAY ASSEMBLY - PRIMARY	RELAY ASSEMBLY - PRIMARY
PLATE - WIRING DIAGRAM	PLATE - WIRING DIAGRAM	PLATE - WIRING DIAGRAM	PLATE - WIRING DIAGRAM	PLATE - WIRING DIAGRAM	PLATE - WIRING DIAGRAM	PLATE - WIRING DIAGRAM
PLATE - NAME (LOCATION OPT.)	PLATE - NAME (LOCATION OPT.)	PLATE - NAME (LOCATION OPT.)	PLATE - NAME (LOCATION OPT.)	PLATE - NAME (LOCATION OPT.)	PLATE - NAME (LOCATION OPT.)	PLATE - NAME (LOCATION OPT.)
1	1	1	1	1	1	1
16043-056	16043-056	16043-056	16043-056	16043-056	16043-056	16043-056
NON-IDENTIFYING NO	NON-IDENTIFYING NO	NON-IDENTIFYING NO	NON-IDENTIFYING NO	NON-IDENTIFYING NO	NON-IDENTIFYING NO	NON-IDENTIFYING NO
DESCRIPTION	DESCRIPTION	DESCRIPTION	DESCRIPTION	DESCRIPTION	DESCRIPTION	DESCRIPTION
DRIVING OR SPECIFICATION	DRIVING OR SPECIFICATION	DRIVING OR SPECIFICATION	DRIVING OR SPECIFICATION	DRIVING OR SPECIFICATION	DRIVING OR SPECIFICATION	DRIVING OR SPECIFICATION
MATERIAL OR NOTE	MATERIAL OR NOTE	MATERIAL OR NOTE	MATERIAL OR NOTE	MATERIAL OR NOTE	MATERIAL OR NOTE	MATERIAL OR NOTE

UNLESS OTHERWISE SPECIFIED DIMENSIONS ARE IN INCHES TOLERANCES ON

2 PL. DEC. 3 PL. DEC. ANGLES

± .06 ± .010 ± 1°

MATERIAL

DR BY RJS 99/05/27

CHK BY RS 99/05/27

ENGR SJB 99/05/27

MFG P/B 99/05/28

CONTR NO.

GOVT APPVAL

SIZE CODE IDENT DWG NO.

C 74063

SCALE NONE

HARTMAN ELECTRICAL MANUFACTURING
MANSFIELD, OHIO

RELAY-VOLTAGE SENSING

093

E-329E

SHEET