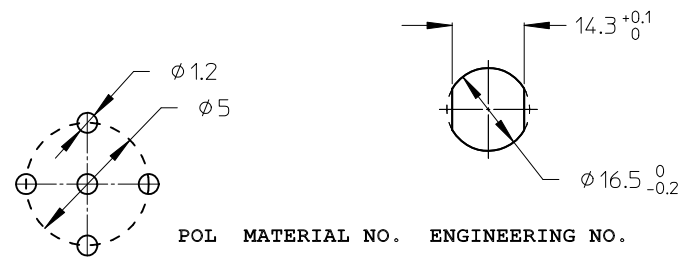
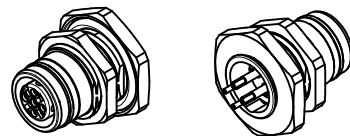


ITEM	COMPONENT	MATERIAL	FINISH
1	REC SHELL	BRASS	NICKEL PLATED
2	INSERT	PUR	BLACK
3	CONTACT	BRASS / GOLD	CuZn Ni/ Au
4	M16 NUT	BRASS	NICKEL PLATED
5	O-RING	NBR	BLACK
6	O-RING	VIION	RED
7	POTTING MATERIAL	EPOXY	NONE



POL MATERIAL NO. ENGINEERING NO.
4 1200845169 WR4W400003

VOLTAGE RATING	250V
AMPERAGE RATING	4A
PROTECTION CLASS	IP 67/68/69K
OPERATING TEMPERATURE	-25°C / +90 °C
UL CERTIFICATION	FILE NO. E152210
CSA CERTIFICATION	FILE NO. LR6837

ENTER DESCRIPTION EC NO: WEU2011-0524 DRW:RSILLER 2011/04/15 CHKD:REISSNER 2011/04/18 APPR:AVOGT 2011/06/10	QUALITY SYMBOLS ▽=0 ◻=0	GENERAL TOLERANCES (UNLESS SPECIFIED)		DIMENSION STYLE MM ONLY		SCALE 4:1	DESIGN UNITS METRIC	THIRD ANGLE PROJECTION	
		mm	INCH	DRAWN BY RSILLER	DATE 2011/04/15	TITLE RECEPTACLE FEMALE M12-4P ULTRA LOCK; BACK M16X1,5			
1	REV	4 PLACES	± ---	± ---	CHECKED BY REISSNER	DATE 2011/04/18	MOLEX INCORPORATED		
		3 PLACES	± ---	± ---	APPROVED BY AVOGT	DATE 2011/06/10			
		2 PLACES	± 0.05	± ---	MATERIAL NO. 1200845169		SHEET NO. 1 OF 1		
		1 PLACE	± 0.1	± ---	SIZE A3		THIS DRAWING CONTAINS INFORMATION THAT IS PROPRIETARY TO MOLEX INCORPORATED AND SHOULD NOT BE USED WITHOUT WRITTEN PERMISSION		
		ANGULAR ± ---°							
		DRAFT WHERE APPLICABLE MUST REMAIN WITHIN DIMENSIONS							