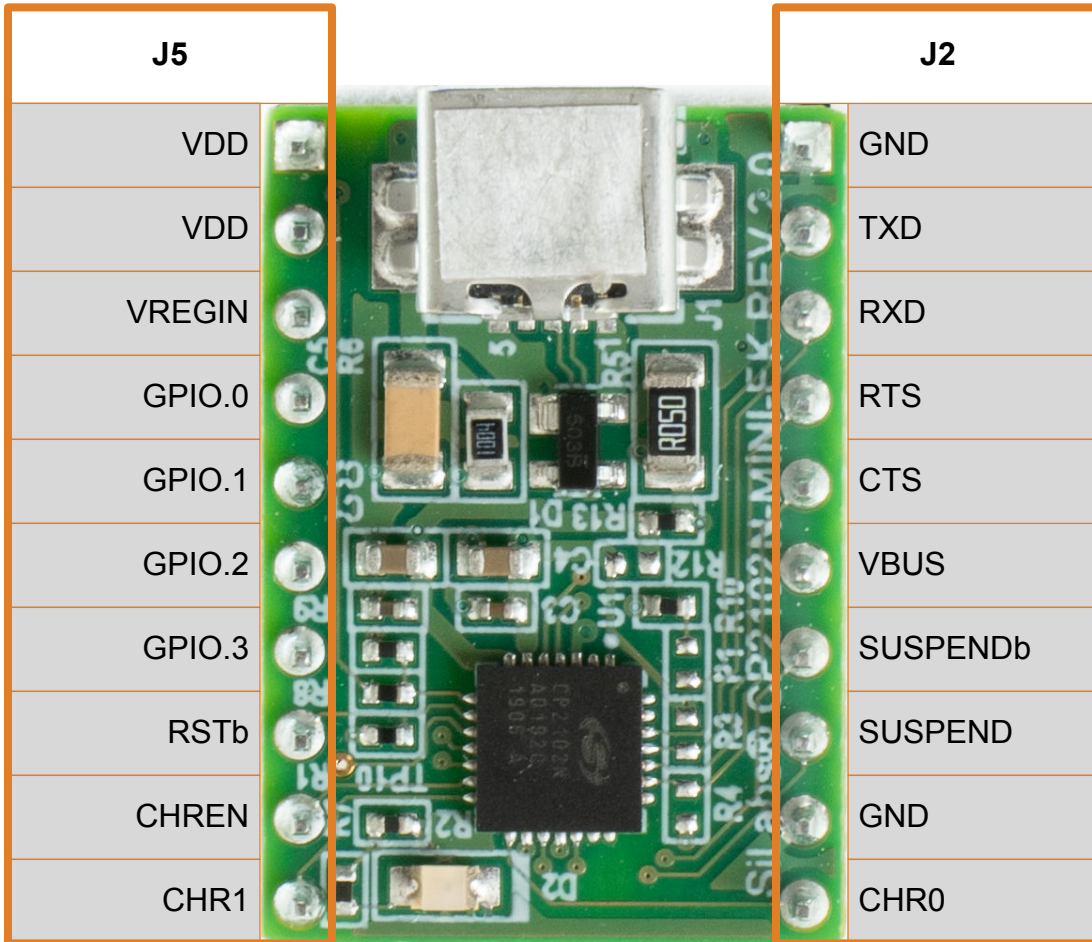


QSG136: CP2102N Mini Evaluation Kit Quick-Start Guide

The CP2102N-MINIEK kit is designed to showcase the various features of the CP2102N USBXpress® devices.

These highly-integrated USB-to-UART bridge controllers provide a simple solution for updating RS-232 designs to USB using a minimum of components and PCB space. By eliminating the need for complex firmware and driver development, the CP2102N devices enable quick USB connectivity with minimal development effort.

KIT CONTENTS
• CP2102N USB-to-UART Bridge Mini Evaluation Board
• Getting Started card



1. Getting Started

1. Download and Install the Latest Virtual COM Port (VCP) Drivers.

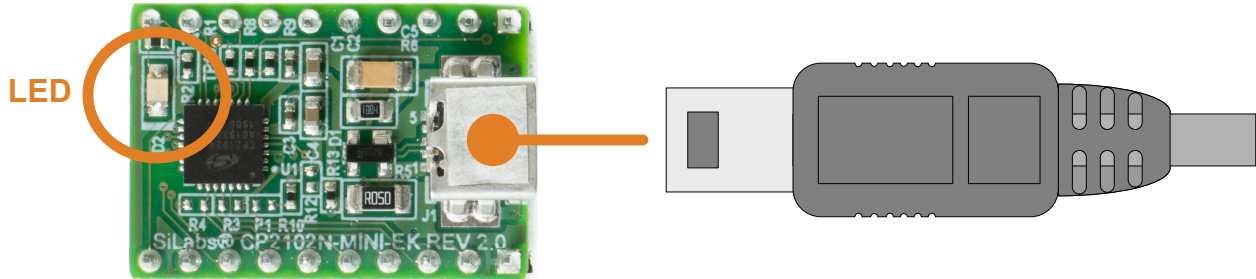
The Virtual COM Port (VCP) drivers enable the CP2102N to appear as a standard COM port. Download the latest version of drivers from the Silicon Labs website:

<http://www.silabs.com/vcpdrivers>

In most cases, select the default option without serial enumeration.

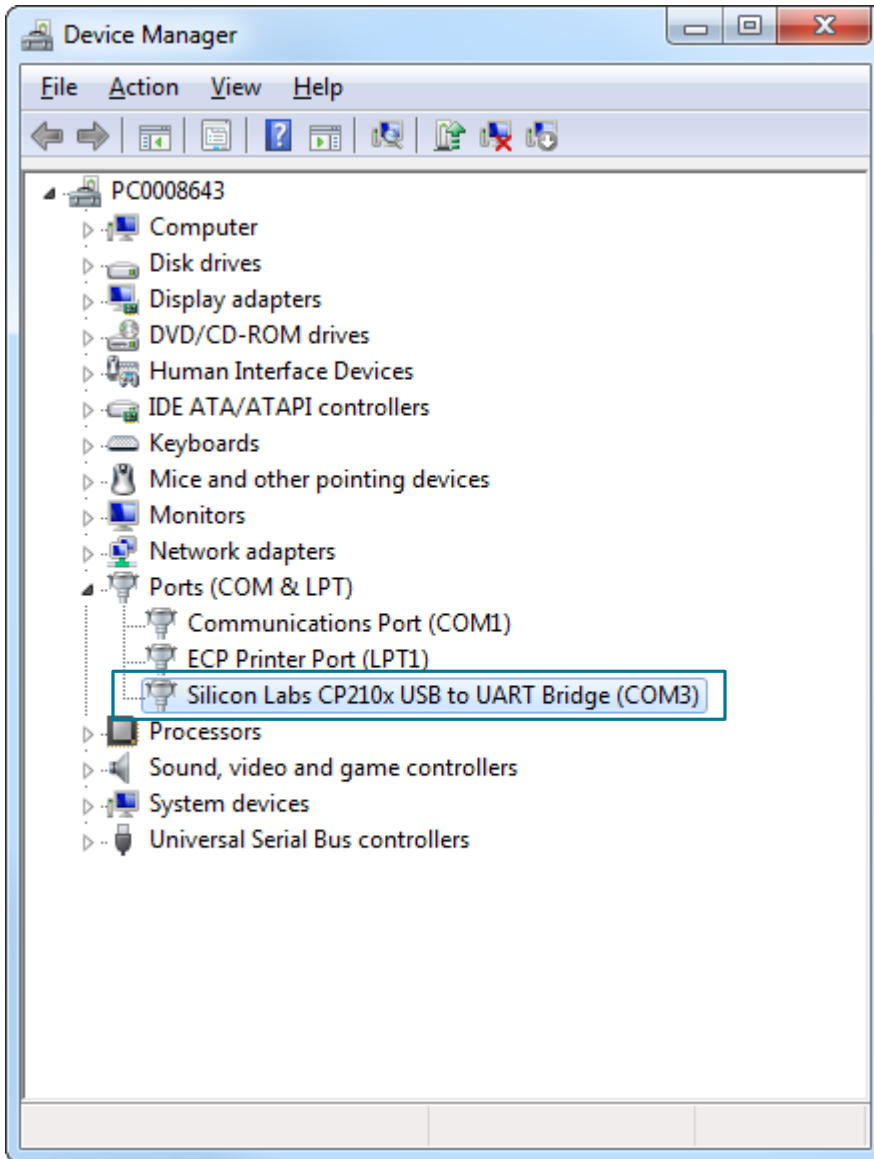
2. Set Up Your Kit.

- a. Provide power to the board by connecting the mini USB connector to the PC using a mini USB cable (not provided). When a connection has been established successfully, the LED (marked in the picture) lights up.



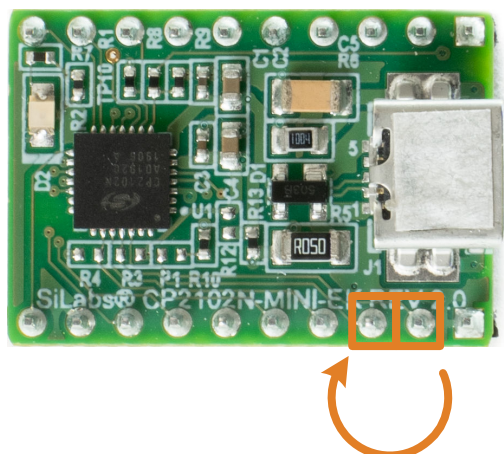
3. Detect Your Device.

The CP2102N device will appear as a COM port in Device Manager in Windows. As a virtual COM port, the CP210x functions identically to a real COM port from the reference point of both the host application and the serial device, and it can support serial device control requests defined in the Microsoft Win32® Communications API.



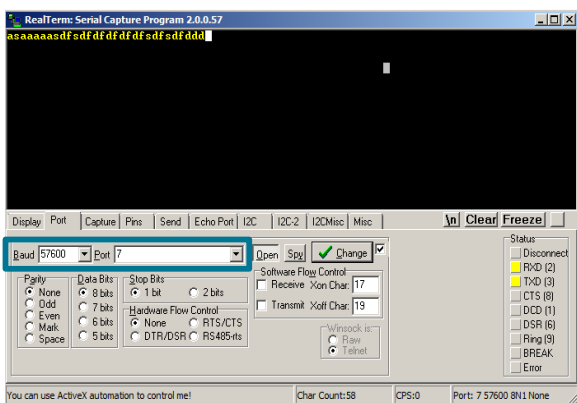
4. Set up a Loop-Back Test.

Short the CP210x RXD and TXD pins on header J2.



5. Send and Receive Some Data

- In Windows, open a serial terminal program (downloaded separately, RealTerm pictured) to verify the CP2102N UART functionality.
- Set the baud rate and select the COM port from Device Manager.
- Type in the transmit area. The characters should echo back after looping through the CP2102N TXD and RXD pins.



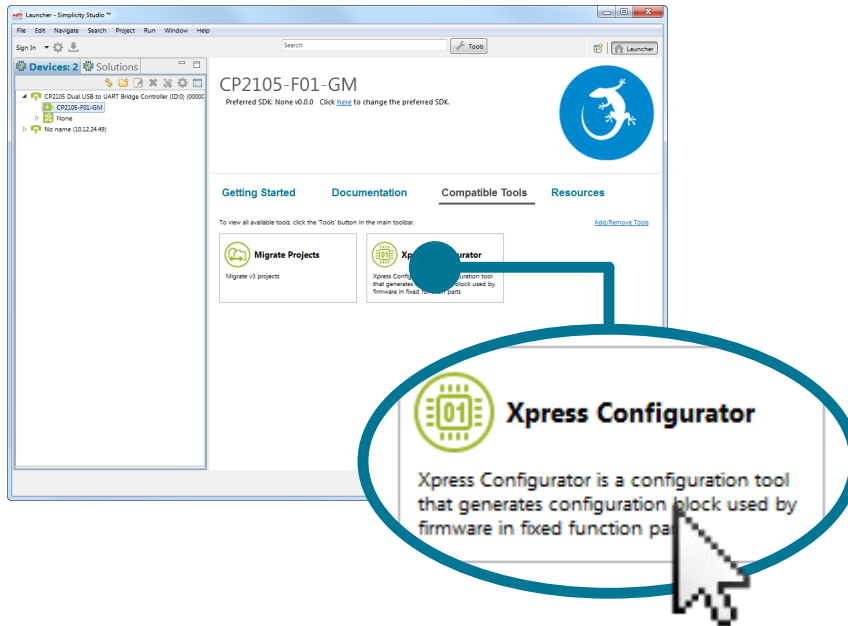
6. Utilize the Available Resources

The next section includes additional resources available for the device, including documentation and application notes.

2. Resources

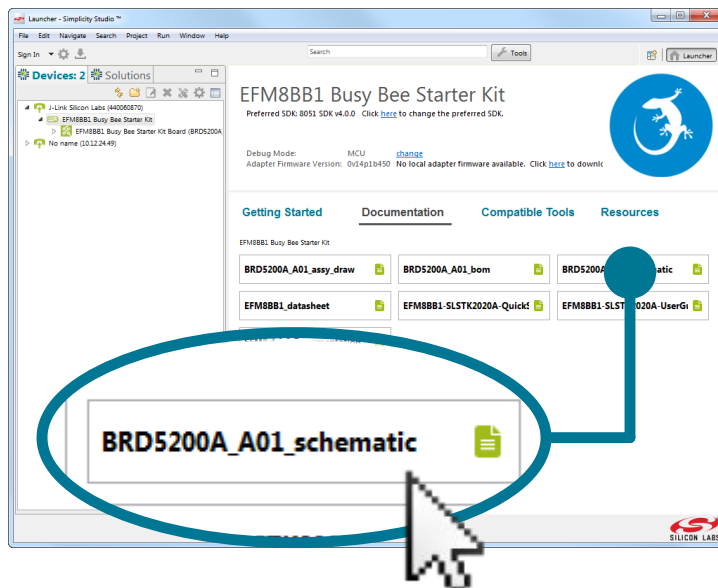
Xpress Configurator

The various GPIO and other features of the CP2102N can be configured using the **[Xpress Configurator]** tool within Simplicity Studio (<http://www.silabs.com/simplicity-studio>). Documentation for Xpress Configurator can be found in *AN721: CP210x Device Customization Guide*, which can be found on the Silicon Labs website (www.silabs.com/interface-appnotes) or within Simplicity Studio using the **[Getting Started]>[Application Notes]** area of the launcher.



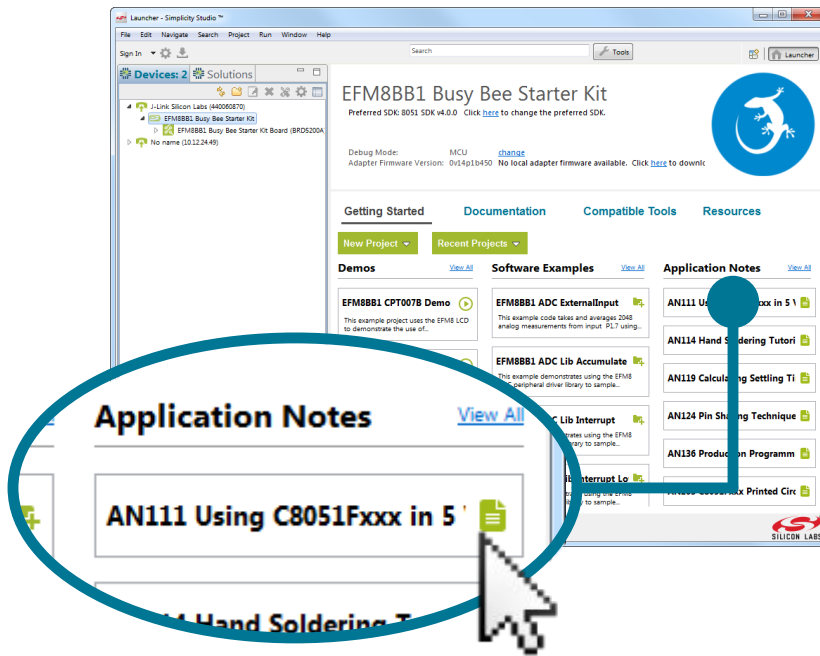
Kit Documentation and User's Guide

Kit documentation like the schematic and detailed board description can be found using the **[Documentation]** area of the launcher. The User's Guide will be a valuable document to reference while using the device.



CP2102 to CP2102N Migration Guide

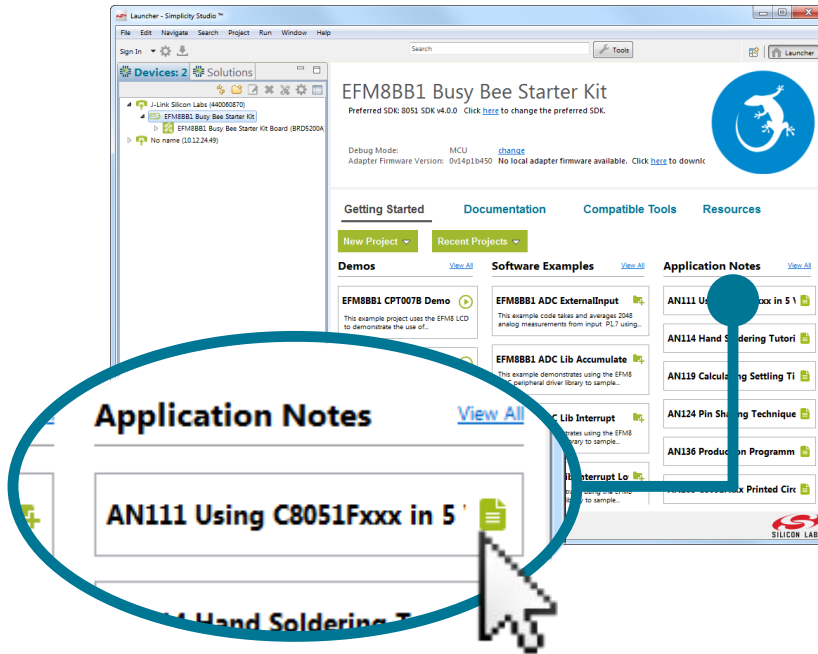
Migrating a product from the CP2102 to the CP2102N? View [AN976: Migrating from a CP2102 to a CP2102N](#) for more information on differences and similarities between these products. This document can be found on the Silicon Labs website (www.silabs.com/interface-appnotes) or within Simplicity Studio using the [Getting Started]>[Application Notes] area of the launcher.



Other Application Notes

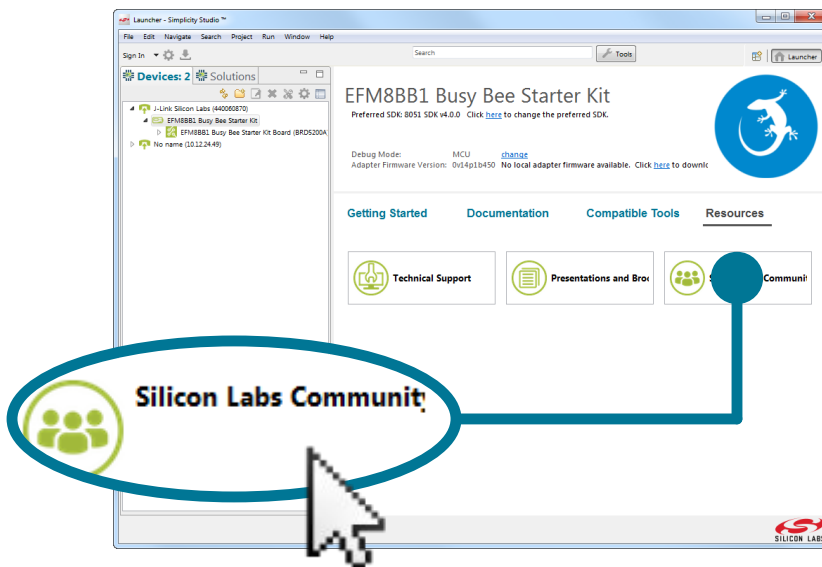
Application Notes can be accessed on the Silicon Labs website (www.silabs.com/interface-appnotes) or within Simplicity Studio using the **[Getting Started]>[Application Notes]** area of the launcher. Some application notes that are available are as follows:

- *AN721: CP210x Device Customization Guide*—This application note guides developers through the configuration process of USBXpress devices using Simplicity Studio **[Xpress Configurator]**.
- *AN220: USB Driver Customization*—This document and accompanying software enable the customization of the CP210x Virtual COM Port (VCP) and USBXpress drivers.
- *AN197: Serial Communications Guide for CP210x*—This document describes recommendations for communicating with USBXpress CP210x devices using the Virtual COM Port (VCP) driver.



Community and Support

Have a question? Visit the community by clicking the **[Resources]>[Silicon Labs Community]** area of the launcher.



3. Revision History

Revision 0.1

October, 2016

- Initial revision.

Revision 0.2

December, 2019

- Updated Revision History format.
- Updated images throughout to reflect hardware revision 2.0.
- Corrected error in pinout diagram on front page kit diagram.

Silicon Labs

Simplicity Studio™4



Simplicity Studio

One-click access to MCU and wireless tools, documentation, software, source code libraries & more. Available for Windows, Mac and Linux!



IoT Portfolio
www.silabs.com/IoT



SW/HW
www.silabs.com/simplicity



Quality
www.silabs.com/quality



Support and Community
community.silabs.com

Disclaimer

Silicon Labs intends to provide customers with the latest, accurate, and in-depth documentation of all peripherals and modules available for system and software implementers using or intending to use the Silicon Labs products. Characterization data, available modules and peripherals, memory sizes and memory addresses refer to each specific device, and "Typical" parameters provided can and do vary in different applications. Application examples described herein are for illustrative purposes only. Silicon Labs reserves the right to make changes without further notice to the product information, specifications, and descriptions herein, and does not give warranties as to the accuracy or completeness of the included information. Without prior notification, Silicon Labs may update product firmware during the manufacturing process for security or reliability reasons. Such changes will not alter the specifications or the performance of the product. Silicon Labs shall have no liability for the consequences of use of the information supplied in this document. This document does not imply or expressly grant any license to design or fabricate any integrated circuits. The products are not designed or authorized to be used within any FDA Class III devices, applications for which FDA premarket approval is required, or Life Support Systems without the specific written consent of Silicon Labs. A "Life Support System" is any product or system intended to support or sustain life and/or health, which, if it fails, can be reasonably expected to result in significant personal injury or death. Silicon Labs products are not designed or authorized for military applications. Silicon Labs products shall under no circumstances be used in weapons of mass destruction including (but not limited to) nuclear, biological or chemical weapons, or missiles capable of delivering such weapons. Silicon Labs disclaims all express and implied warranties and shall not be responsible or liable for any injuries or damages related to use of a Silicon Labs product in such unauthorized applications.

Trademark Information

Silicon Laboratories Inc.®, Silicon Laboratories®, Silicon Labs®, SiLabs® and the Silicon Labs logo®, Bluegiga®, Bluegiga Logo®, ClockBuilder®, CMEMS®, DSPLL®, EFM®, EFM32®, EFR®, Ember®, Energy Micro, Energy Micro logo and combinations thereof, "the world's most energy friendly microcontrollers", Ember®, EZLink®, EZRadio®, EZRadioPRO®, Gecko®, Gecko OS, Gecko OS Studio, ISOModem®, Precision32®, ProSLIC®, Simplicity Studio®, SiPHY®, Telegesis, the Telegesis Logo®, USBXpress®, Zentri, the Zentri logo and Zentri DMS, Z-Wave®, and others are trademarks or registered trademarks of Silicon Labs. ARM, CORTEX, Cortex-M3 and THUMB are trademarks or registered trademarks of ARM Holdings. Keil is a registered trademark of ARM Limited. Wi-Fi is a registered trademark of the Wi-Fi Alliance. All other products or brand names mentioned herein are trademarks of their respective holders.



Silicon Laboratories Inc.
400 West Cesar Chavez
Austin, TX 78701
USA

<http://www.silabs.com>