

# Bussmann series CD Industrial HRC Fuse Links



## Product description

Eaton's Bussmann series range of British Standard fuse links size B1 is specifically designed for the protection of general industrial applications e.g. power distribution, cable protection, motor protection.

## Standard features

- Good peak let-through current limitation
- 1:1:6 Selective coordination ratio between "minor" and "major" fuse
- gG characteristics for cable protection and gM for motor protection applications
- Power loss values well within the limits of IEC 60269

**Catalogue symbol:**

- CD(Amps)

**Technical data:**

- Rated voltage: 500 V a.c. / 415 V a.c.
- Rated current: 80 to 100 A
- Breaking capacity: 80 kA
- Class of operation: gG and gM
- Size: B1

**Standards/approvals:**

- BS88
- IEC 60269
- Suitable for use in RoHS compliant applications

**Fuse holder (sold separately)**

- RS200H

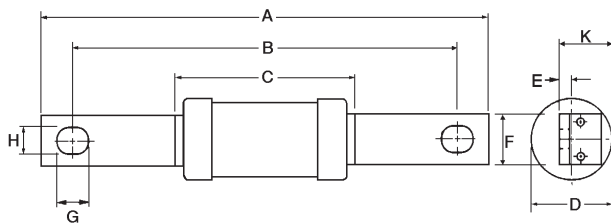
**Packaging:**

- MOQ 10

**Table 1. Technical data**

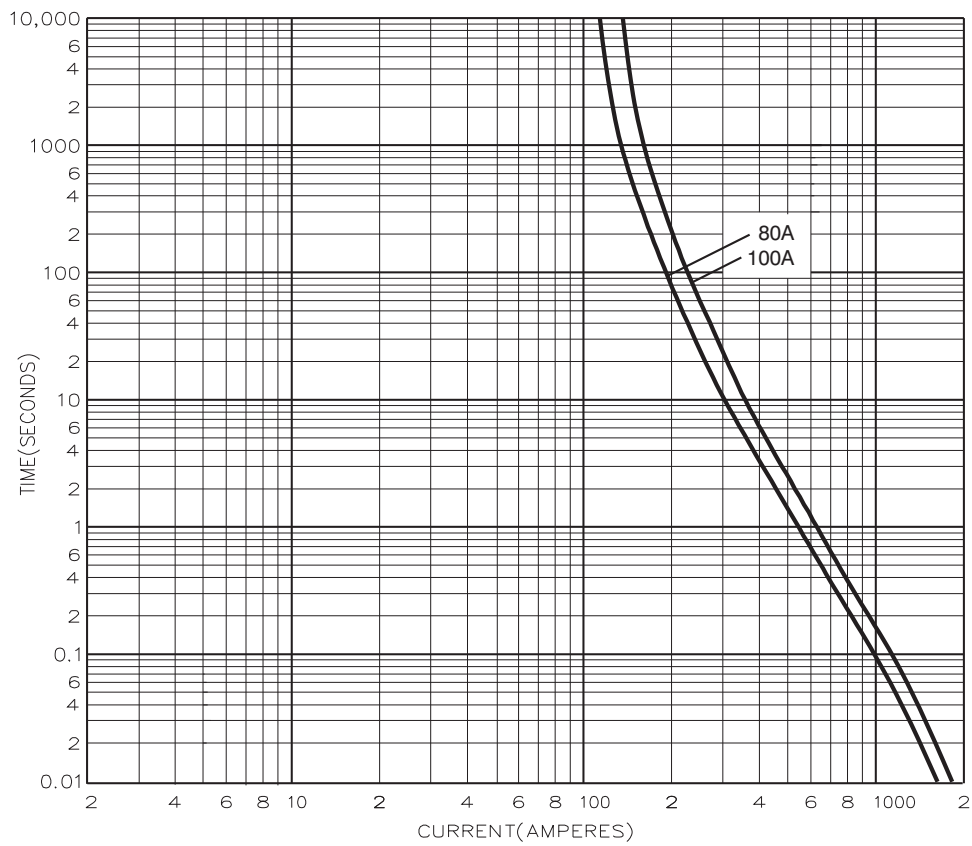
| Part number | Voltage    | Current rating (amps) | Energy integrals I <sup>2</sup> t (A <sup>2</sup> S) |                | Watts loss W | Product class | Weight |
|-------------|------------|-----------------------|--|----------------|--------------|---------------|--------|
|             |            |                       | Pre-arcing   | Total at 415 V |              |               |        |
| CD80        | 500 V a.c. | 80                    | 13,000   | 35,200         | 7.2          | gG            | 75g    |
| CD100       | 500 V a.c. | 100                   | 25,000   | 76,500         | 8.5          | gG            | 75g    |
| CD100M125   | 415 V a.c. | 100M125               | 57,000   | 150,000        | 11           | gM            | 105g   |
| CD100M160   | 415 V a.c. | 100M160               | 72,500   | 190,000        | 13           | gM            | 105g   |
| CD100M200   | 415 V a.c. | 100M200               | 120,000  | 290,000        | 14           | gM            | 115g   |

**Dimensions - mm**

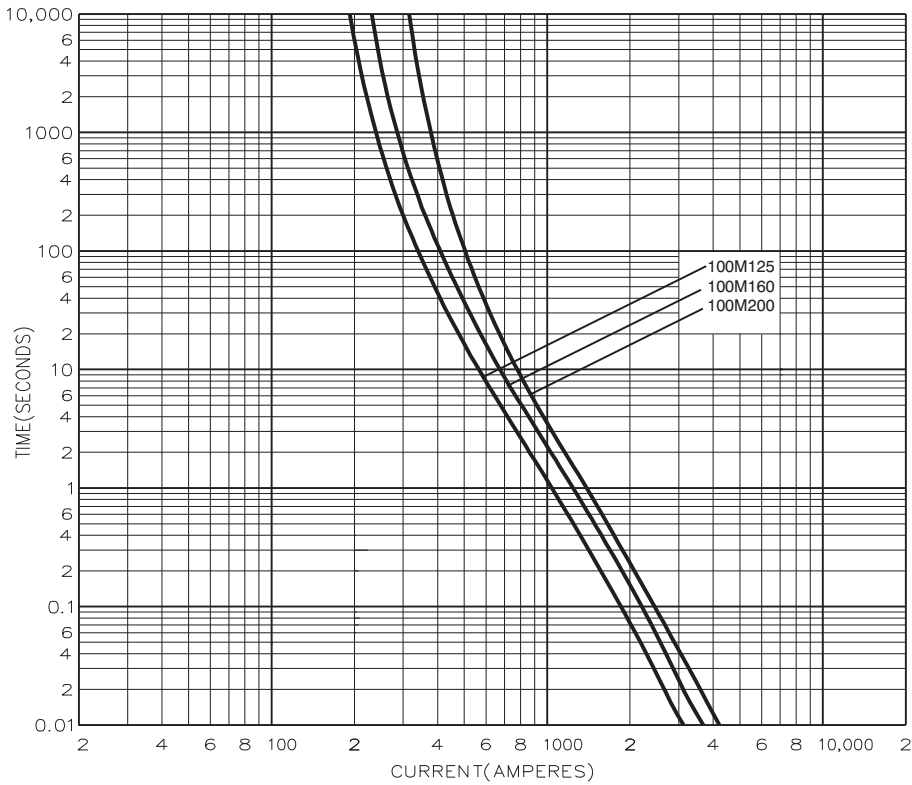


| Catalogue numbers | A   | B   | C    | D  | E   | F    | G    | H   | K    |
|-------------------|-----|-----|------|----|-----|------|------|-----|------|
| CD80-100          | 126 | 111 | 58.5 | 21 | 3.2 | 14.3 | 11.1 | 8.7 | 19.5 |
| CD100M125-160     | 126 | 111 | 58.5 | 26 | 3.2 | 14.3 | 11.1 | 8.7 | 22   |
| CD100M200         | 136 | 111 | 47   | 31 | 3.2 | 19   | 12.5 | 8.7 | 22.5 |

**Time current curve - CD80 and CD100**



**Time current curve - CD100M**



Changes to the products, to the information contained in this document, and to prices are reserved; so are errors and omissions. Only order confirmations and technical documentation by Eaton is binding. Photos and pictures also do not warrant a specific layout or functionality. Their use in whatever form is subject to prior approval by Eaton. The same applies to Trademarks (especially Eaton, Moeller, and Cutler-Hammer). The Terms and Conditions of Eaton apply, as referenced on Eaton Internet pages and Eaton order confirmations.

**Eaton**  
 EMEA Headquarters  
 Route de la Longeraie 7  
 1110 Morges, Switzerland  
 Eaton.eu

© 2015 Eaton  
 All Rights Reserved  
 Publication No. 4116  
 July 2015