

DO NOT SCALE FROM THIS PRINT

DESIGNED & DIMENSIONED IN MILLIMETERS [INCHES]

RPBU-XX-X-B-XX-XX

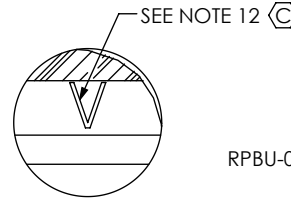
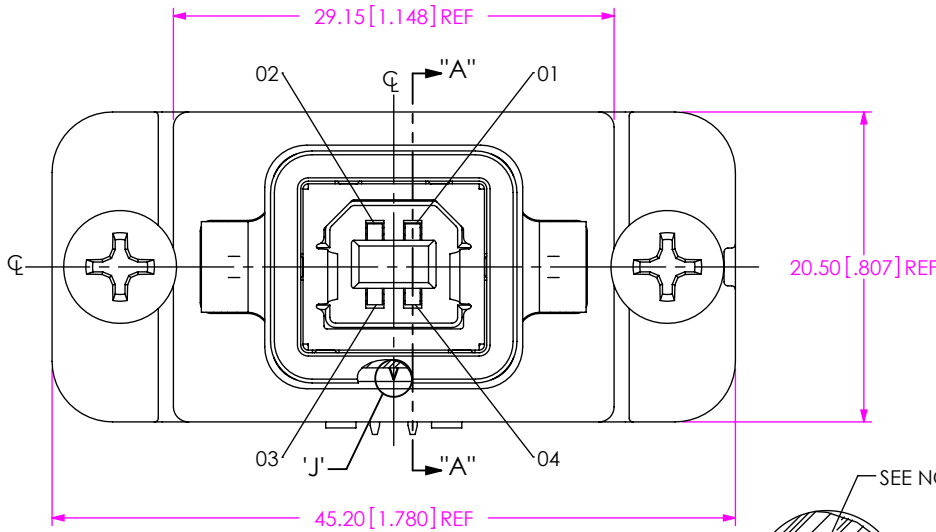
No OF POSITIONS  
-01

OPTION  
-LC: LOCKING CLIP  
(AVAILABLE ON -VT ONLY)

PLATING SPECIFICATION  
-S: SELECTIVE, .000030 GOLD ON POST, TIN ON TAIL

TERMINATION  
-RA: RIGHT ANGLE (SHEET 1, FIG 1)  
-VT: VERTICAL THROUGH HOLE (SHEET 2, FIG 2)

TYPE  
-B



DETAIL 'J'  
SCALE 8 : 1

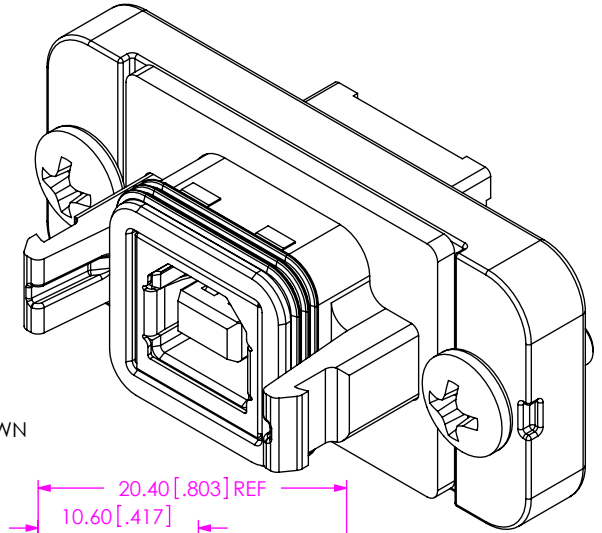
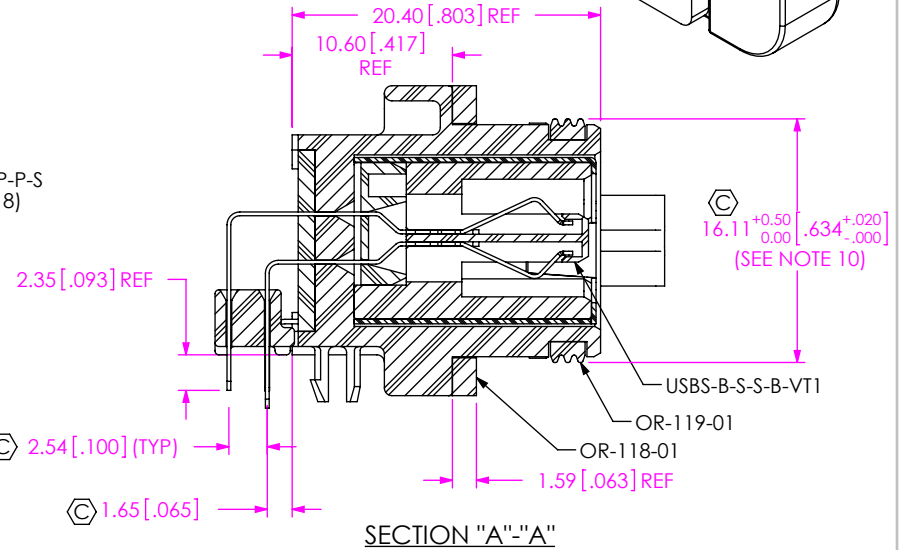
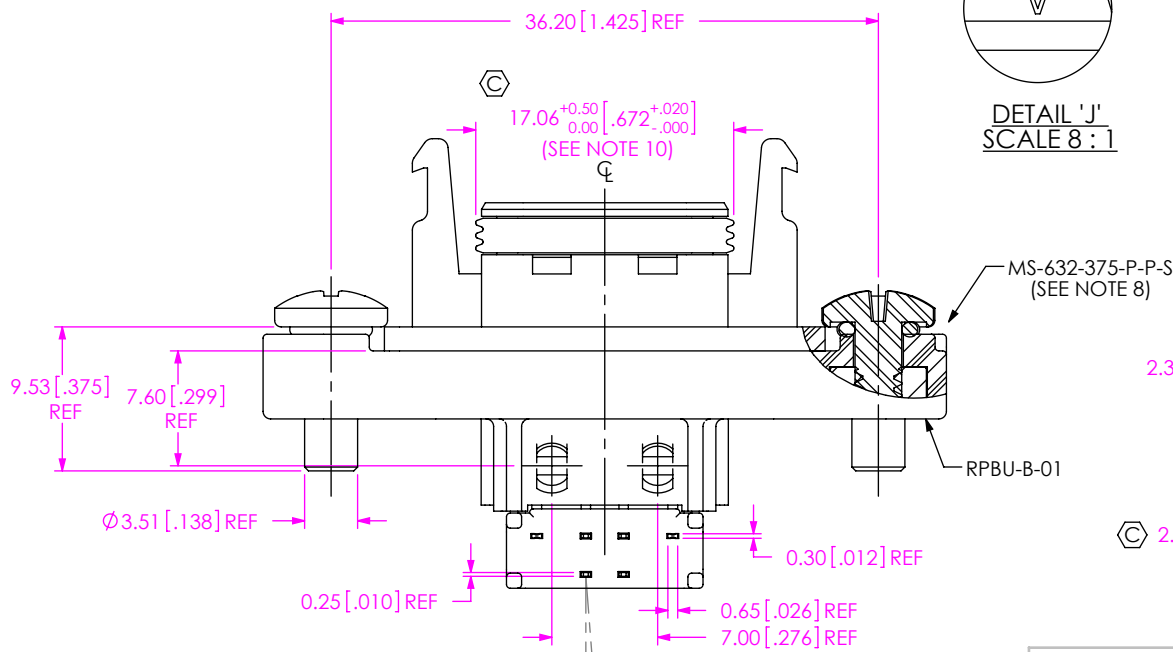


FIG 1  
RPBU-01-X-B-RA SHOWN



NOTES:

- ⑥ REPRESENTS A CRITICAL DIMENSION.
- BURR ALLOWANCE: 0.038[.0015] MAX.
- MINIMUM PUSHOUT FORCE: 4.4N[1.00 LB].
- MAXIMUM ALLOWABLE BOW: 0.05[.002] MM/MM AFTER ASSEMBLY.
- PANEL THICKNESS: 0.76[.030] - 3.96[.156], RECOMMENDED PANEL CUT OUT ON SHEET 2.
- REQUIRED TORQUE ON MS-632-375-P-P-S: .35±.07 Nm [50±10 IN-OZ].
- ALL PARTS MUST BE PACKAGED IN TUBES.
- SEAL O-RING IS INCLUDED IN THE MS-632-375-P-P-S.
- EPOXY MUST BE FLUSH OR BELOW EDGE OF CAVITY. NO VOIDS IN EPOXY ALLOWED.
- MEASURE O-RING IN THE CENTER OF THE PART.
- PARTS TO BE OVEN CURED, AFTER THE EPOXY IS FILLED, AT 200°C FOR 10 MINUTES.
- OR-119-XX POSITION INDICATOR.

2° MAX SWAY  
(EITHER DIRECTION)

UNLESS OTHERWISE SPECIFIED, DIMENSIONS ARE IN MILLIMETERS [INCHES]. TOLERANCES ARE:  
DECIMALS ANGLES  
X.X: ±0.3 [0.1] 2°  
X.XX: ±0.13 [0.05]  
X.XXX: ±0.051 [0.020]

PROPRIETARY NOTE

THIS DOCUMENT CONTAINS CONFIDENTIAL AND PROPRIETARY INFORMATION AND ALL DESIGN, MANUFACTURING, REPRODUCTION, USE, PATENT RIGHTS AND SALES RIGHTS ARE EXPRESSLY RESERVED BY SAMTEC, INC. THIS DOCUMENT SHALL NOT BE DISCLOSED, IN WHOLE OR PART, TO ANY UNAUTHORIZED PERSON OR ENTITY NOR REPRODUCED, TRANSFERRED OR INCORPORATED IN ANY OTHER PROJECT IN ANY MANNER WITHOUT THE EXPRESS WRITTEN CONSENT OF SAMTEC, INC.



520 PARK EAST BLVD., NEW ALBANY, IN 47150  
PHONE: 812-944-6733 FAX: 812-948-5047  
e-Mail: info@SAMTEC.com code 53322

MATERIAL: DO NOT SCALE DRAWING SHEET SCALE: 2:1  
INSULATOR: LCP UL94V0, COLOR: BLACK  
CONTACT: PHOS BRONZE  
SHIELD: PHOS BRONZE  
SEAL: SILICON  
SCREW: STAINLESS STEEL  
NUT: STAINLESS STEEL

DESCRIPTION:  
RECTANGULAR PANEL BOARD MOUNT USB-B

DWG. NO. RPBU-XX-X-B-XX-XX

BY: VICKY Z 03/29/2010 SHEET 1 OF 6

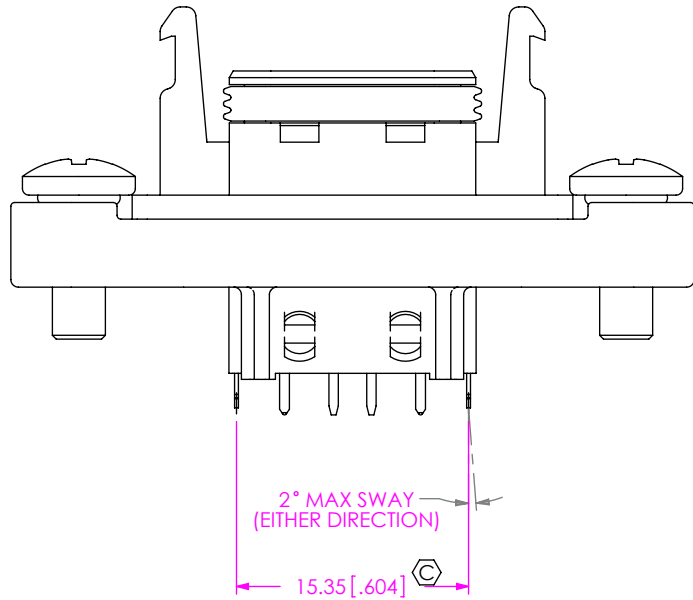
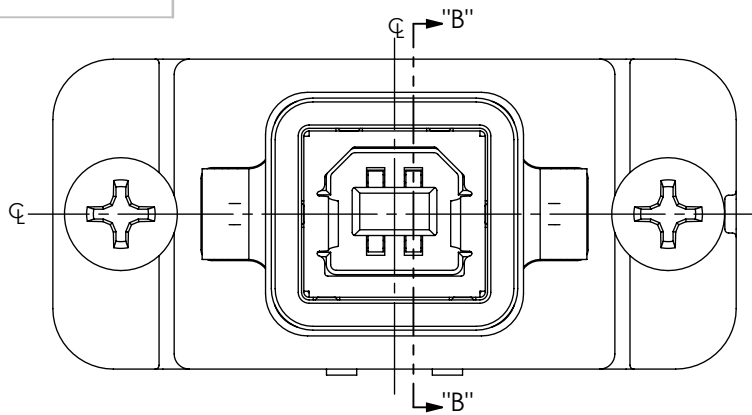
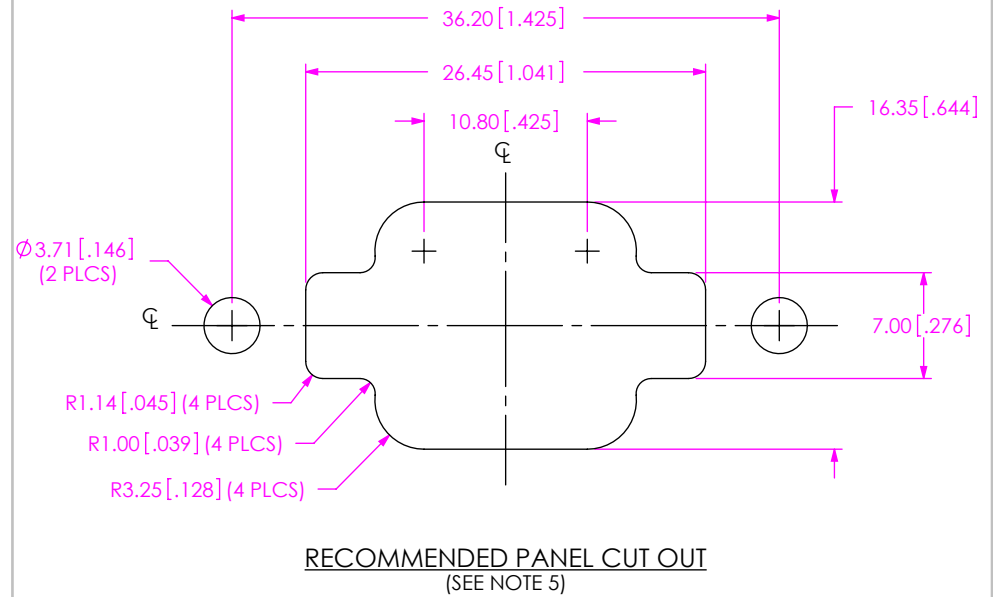
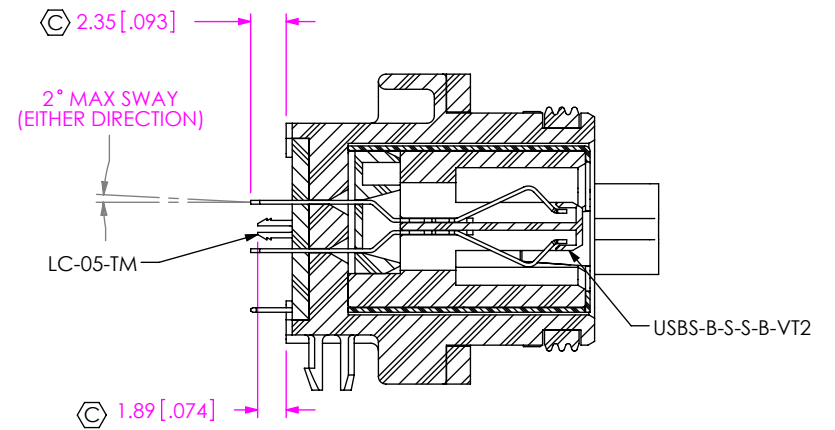


FIG 2  
RPBU-01-X-B-VT-LC SHOWN  
(SAME AS FIG 1, EXCEPT AS SHOWN)



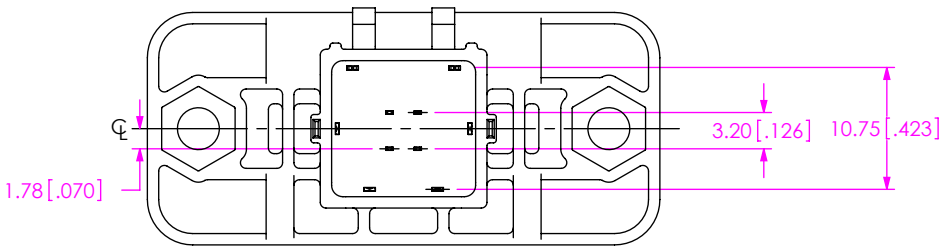
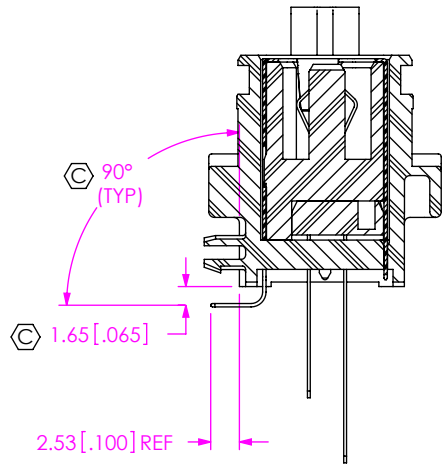
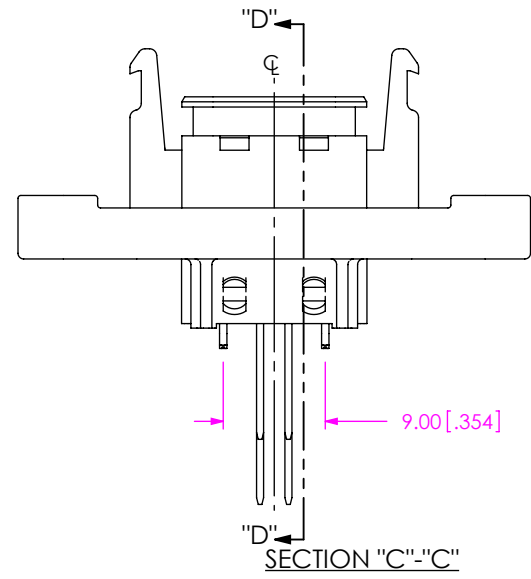
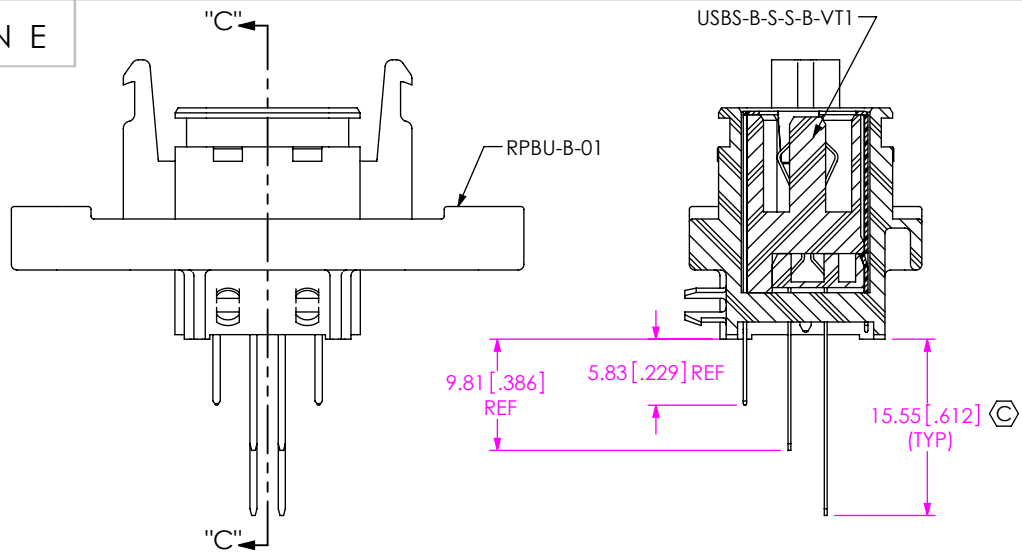
RECOMMENDED PANEL CUT OUT  
(SEE NOTE 5)

**PROPRIETARY NOTE**  
THIS DOCUMENT CONTAINS CONFIDENTIAL AND PROPRIETARY INFORMATION AND ALL DESIGN, MANUFACTURING, REPRODUCTION, USE, PATENT RIGHTS AND SALES RIGHTS ARE EXPRESSLY RESERVED BY SAMTEC, INC. THIS DOCUMENT SHALL NOT BE DISCLOSED, IN WHOLE OR PART, TO ANY UNAUTHORIZED PERSON OR ENTITY NOR REPRODUCED, TRANSFERRED OR INCORPORATED IN ANY OTHER PROJECT IN ANY MANNER WITHOUT THE EXPRESS WRITTEN CONSENT OF SAMTEC, INC.

DO NOT SCALE DRAWING  
SHEET SCALE: 2:1

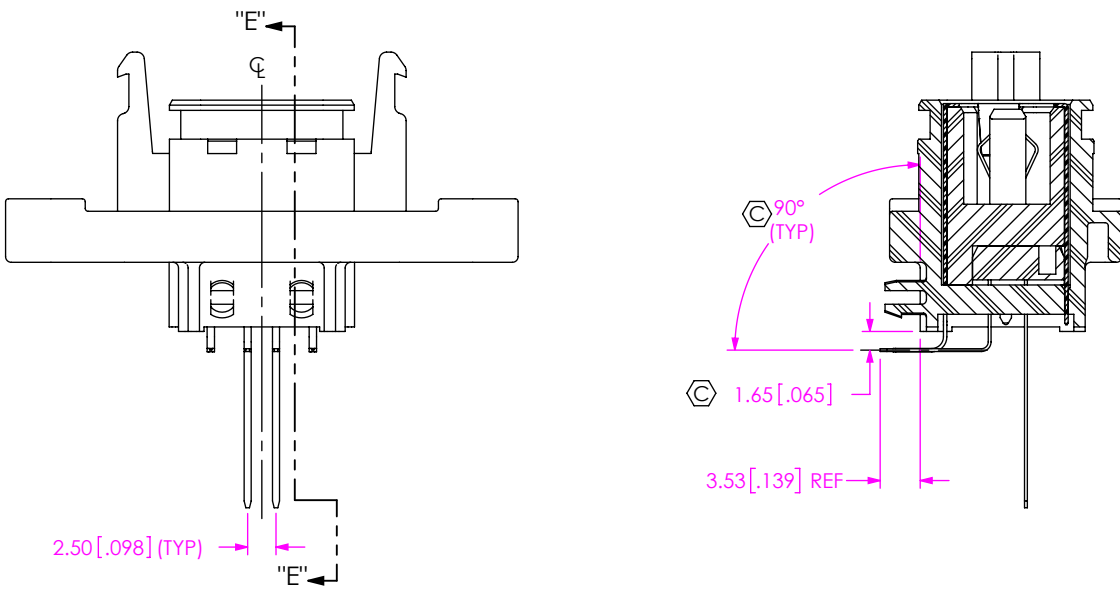
**samtec**  
520 PARK EAST BLVD, NEW ALBANY, IN 47150  
PHONE: 812-944-6733 FAX: 812-948-5047  
e-Mail info@SAMTEC.com code 55322

DESCRIPTION:  
RECTANGULAR PANEL BOARD MOUNT USB-B  
DWG. NO. **RPBU-XX-X-B-XX-XX**  
BY: VICKY Z 03/29/2010 SHEET 2 OF 6



-RA: IN-PROCESS 1  
FILL USBS-B-S-S-B-VT1

-RA: IN-PROCESS 2  
FORM SHIELD TAILS ON USBS-B-S-S-B-VT1



-RA: IN-PROCESS 3  
FORM 1ST ROW CONTACTS

**PROPRIETARY NOTE**  
THIS DOCUMENT CONTAINS CONFIDENTIAL AND PROPRIETARY INFORMATION AND ALL DESIGN, MANUFACTURING, REPRODUCTION, USE, PATENT RIGHTS AND SALES RIGHTS ARE EXPRESSLY RESERVED BY SAMTEC, INC. THIS DOCUMENT SHALL NOT BE DISCLOSED, IN WHOLE OR PART, TO ANY UNAUTHORIZED PERSON OR ENTITY NOR REPRODUCED, TRANSFERRED OR INCORPORATED IN ANY OTHER PROJECT IN ANY MANNER WITHOUT THE EXPRESS WRITTEN CONSENT OF SAMTEC, INC.

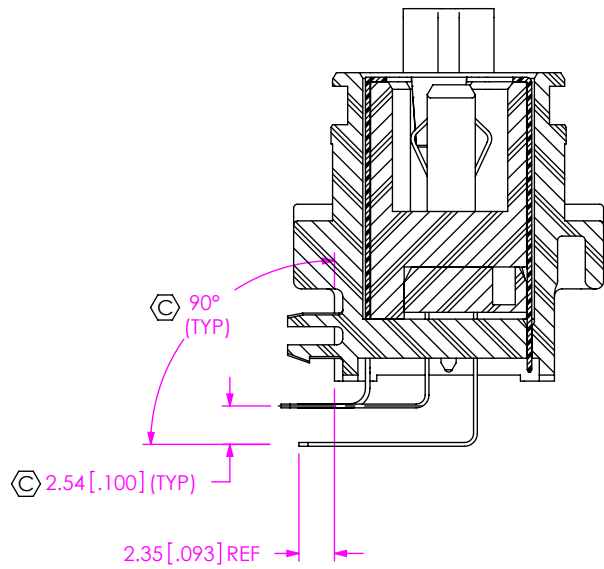
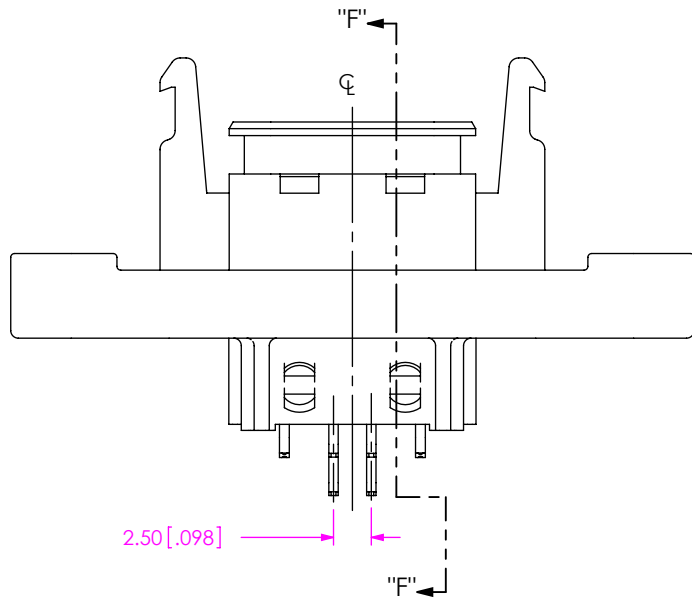
DO NOT SCALE DRAWING  
SHEET SCALE: 3:2



DESCRIPTION: SECTION "E"- "E"  
RECTANGULAR PANEL BOARD MOUNT USB-B

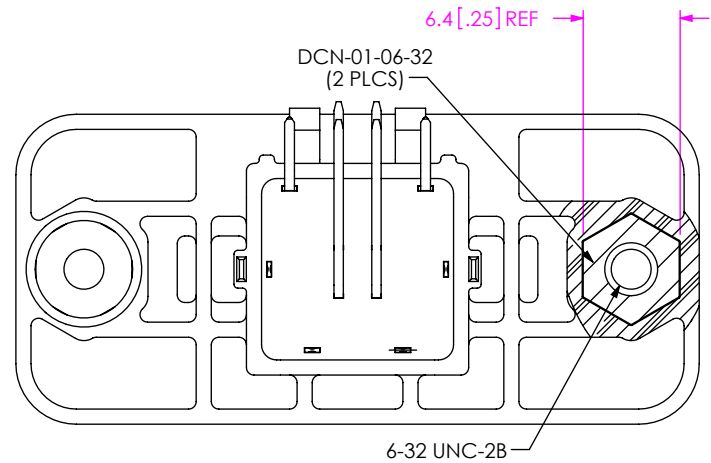
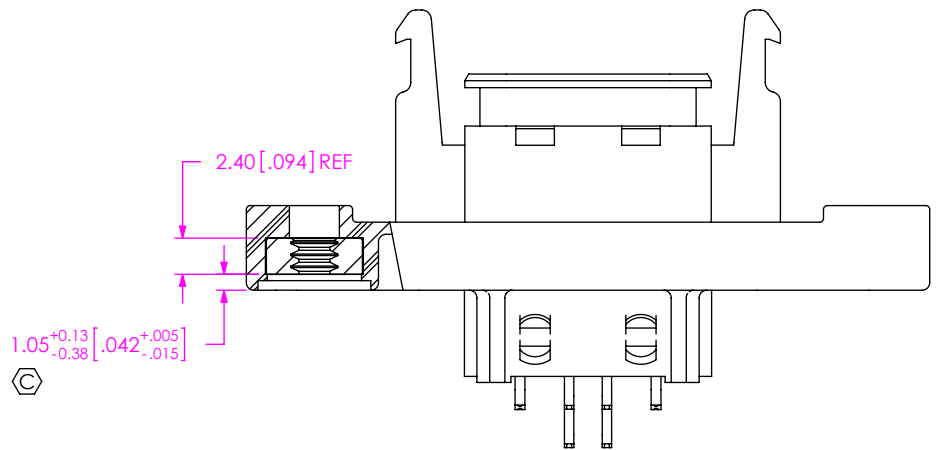
DWG. NO. RPBU-XX-X-B-XX-XX

BY: VICKY Z 03/29/2010 SHEET 3 OF 6



SECTION "F"-"F"

-RA: IN-PROCESS 4  
FORM 2ND ROW CONTACTS



-RA: IN-PROCESS 5  
FILL DCN-01-06-32 & HEAT STAKE

**PROPRIETARY NOTE**  
THIS DOCUMENT CONTAINS CONFIDENTIAL AND PROPRIETARY INFORMATION AND ALL DESIGN, MANUFACTURING, REPRODUCTION, USE, PATENT RIGHTS AND SALES RIGHTS ARE EXPRESSLY RESERVED BY SAMTEC, INC. THIS DOCUMENT SHALL NOT BE DISCLOSED, IN WHOLE OR PART, TO ANY UNAUTHORIZED PERSON OR ENTITY NOR REPRODUCED, TRANSFERRED OR INCORPORATED IN ANY OTHER PROJECT IN ANY MANNER WITHOUT THE EXPRESS WRITTEN CONSENT OF SAMTEC, INC.

DO NOT SCALE DRAWING

SHEET SCALE: 2:1

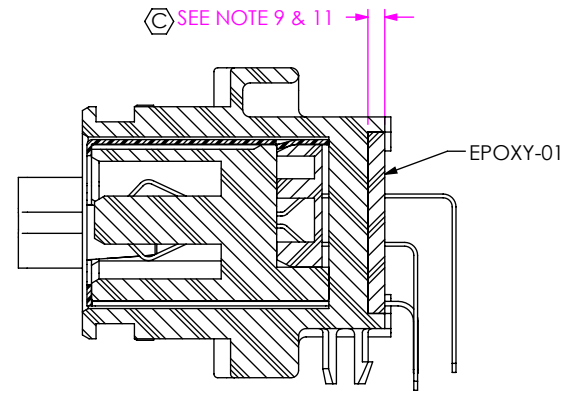
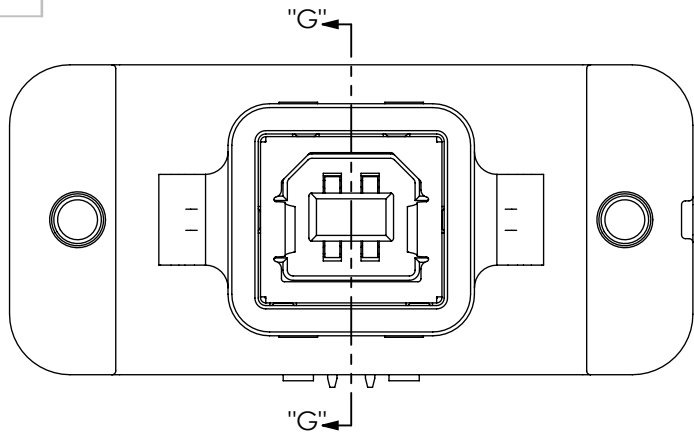


520 PARK EAST BLVD, NEW ALBANY, IN 47150  
PHONE: 812-944-6733 FAX: 812-948-5047  
e-Mail info@SAMTEC.com code 55322

DESCRIPTION:  
RECTANGULAR PANEL BOARD MOUNT USB-B

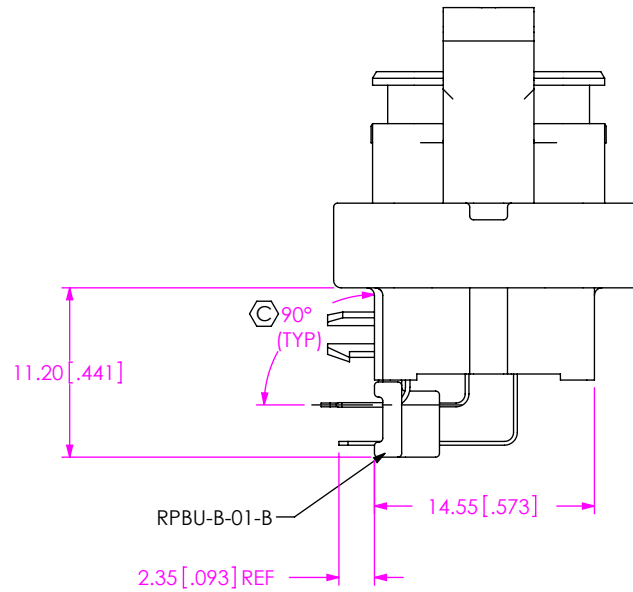
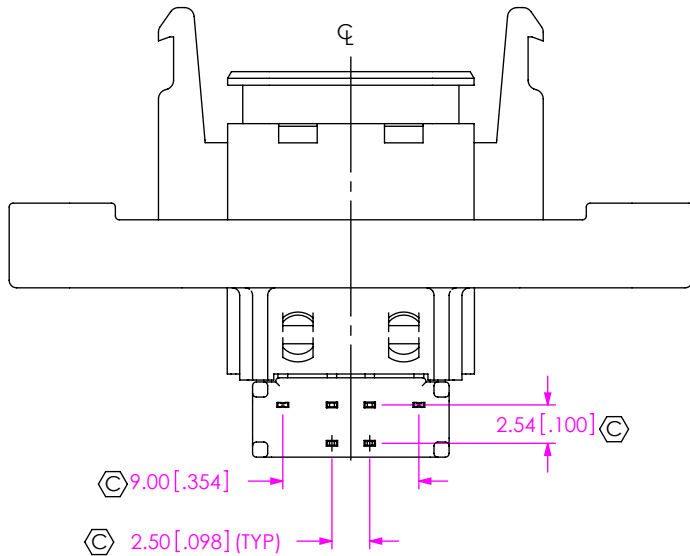
DWG. NO. **RPBU-XX-X-B-XX-XX**

BY: VICKY Z 03/29/2010 SHEET 4 OF 6



SECTION "G"

-RA: IN-PROCESS 6  
FILL EPOXY-01



-RA: IN-PROCESS 7  
ADD RPBU-B-XX-B

**PROPRIETARY NOTE**  
THIS DOCUMENT CONTAINS CONFIDENTIAL AND PROPRIETARY INFORMATION AND ALL DESIGN, MANUFACTURING, REPRODUCTION, USE, PATENT RIGHTS AND SALES RIGHTS ARE EXPRESSLY RESERVED BY SAMTEC, INC. THIS DOCUMENT SHALL NOT BE DISCLOSED, IN WHOLE OR PART, TO ANY UNAUTHORIZED PERSON OR ENTITY NOR REPRODUCED, TRANSFERRED OR INCORPORATED IN ANY OTHER PROJECT IN ANY MANNER WITHOUT THE EXPRESS WRITTEN CONSENT OF SAMTEC, INC.

DO NOT SCALE DRAWING

SHEET SCALE: 2:1

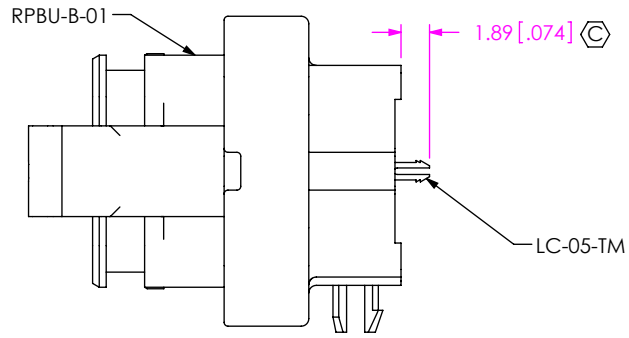
**samtec**

520 PARK EAST BLVD, NEW ALBANY, IN 47150  
PHONE: 812-944-6733 FAX: 812-948-5047  
e-Mail info@SAMTEC.com code 55322

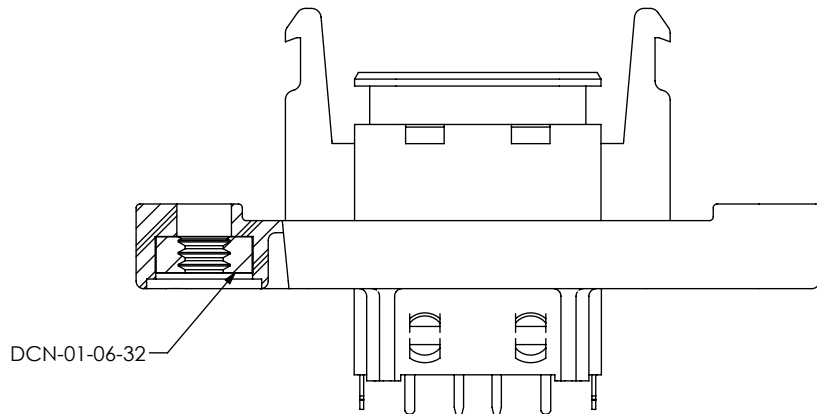
DESCRIPTION:  
RECTANGULAR PANEL BOARD MOUNT USB-B

DWG. NO. **RPBU-XX-X-B-XX-XX**

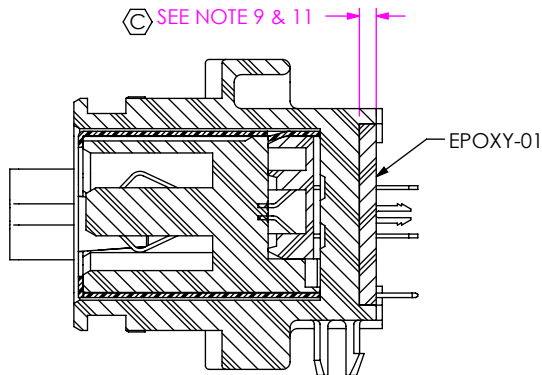
BY: VICKY Z 03/29/2010 SHEET 5 OF 6



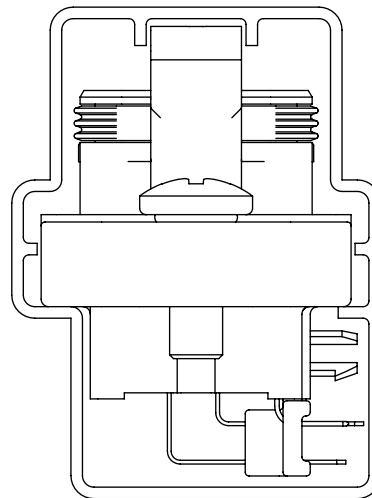
-VT: IN-PROCESS 1  
FILL LC-05-TM



-VT: IN-PROCESS 3  
FILL DCN-01-06-32 & HEAT STAKE  
(SAME AS -RA: IN-PROCESS 5, EXCEPT AS SHOWN)



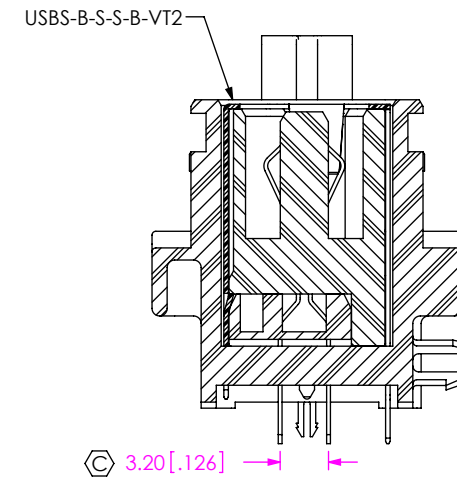
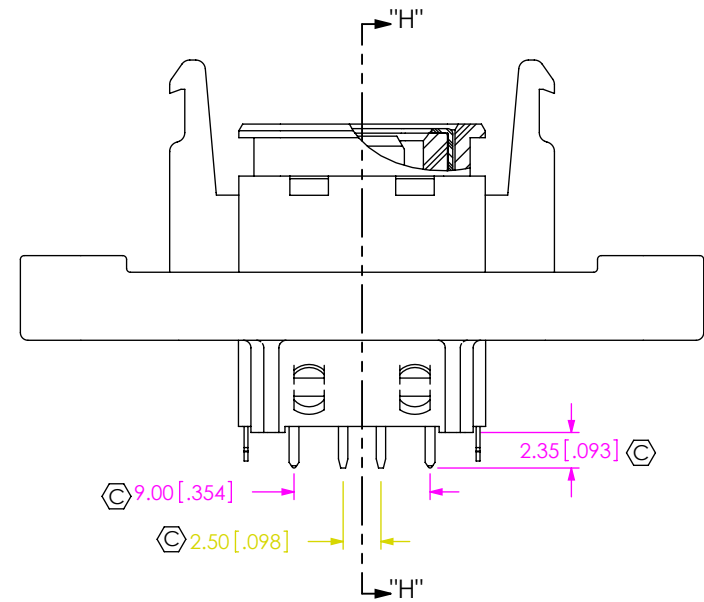
-VT: IN-PROCESS 4  
FILL EPOXY-01  
(SAME AS -RA: IN-PROCESS 6, EXCEPT AS SHOWN)



PACKAGING VIEW  
(SEE NOTE 7)

TUBE: PT-RPBU002  
PLUG: TP-50

F:\DWG\MISC\MKTG\RPBU-XX-X-B-XX-XX-MKT.SLDRW



-VT: IN-PROCESS 2  
FILL USB-B-S-S-B-VT2  
(SAME AS -RA: IN-PROCESS 1, EXCEPT AS SHOWN)

**PROPRIETARY NOTE**  
THIS DOCUMENT CONTAINS CONFIDENTIAL AND PROPRIETARY INFORMATION AND ALL DESIGN, MANUFACTURING, REPRODUCTION, USE, PATENT RIGHTS AND SALES RIGHTS ARE EXPRESSLY RESERVED BY SAMTEC, INC. THIS DOCUMENT SHALL NOT BE DISCLOSED, IN WHOLE OR PART, TO ANY UNAUTHORIZED PERSON OR ENTITY NOR REPRODUCED, TRANSFERRED OR INCORPORATED IN ANY OTHER PROJECT IN ANY MANNER WITHOUT THE EXPRESS WRITTEN CONSENT OF SAMTEC, INC.

DO NOT SCALE DRAWING

SHEET SCALE: 2:1



520 PARK EAST BLVD. NEW ALBANY, IN 47150  
PHONE: 812-944-6733 FAX: 812-948-5047  
e-Mail info@SAMTEC.com code 55322

DESCRIPTION:  
RECTANGULAR PANEL BOARD MOUNT USB-B

DWG. NO.  
RPBU-XX-X-B-XX-XX

BY: VICKY Z 03/29/2010 SHEET 6 OF 6