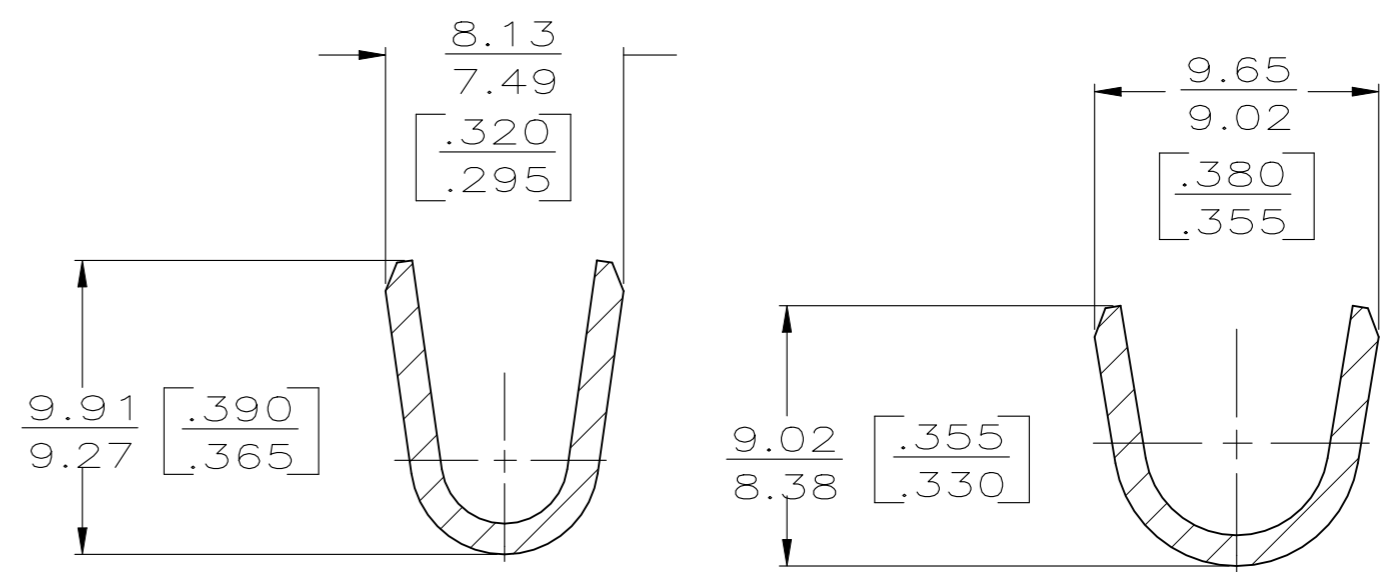
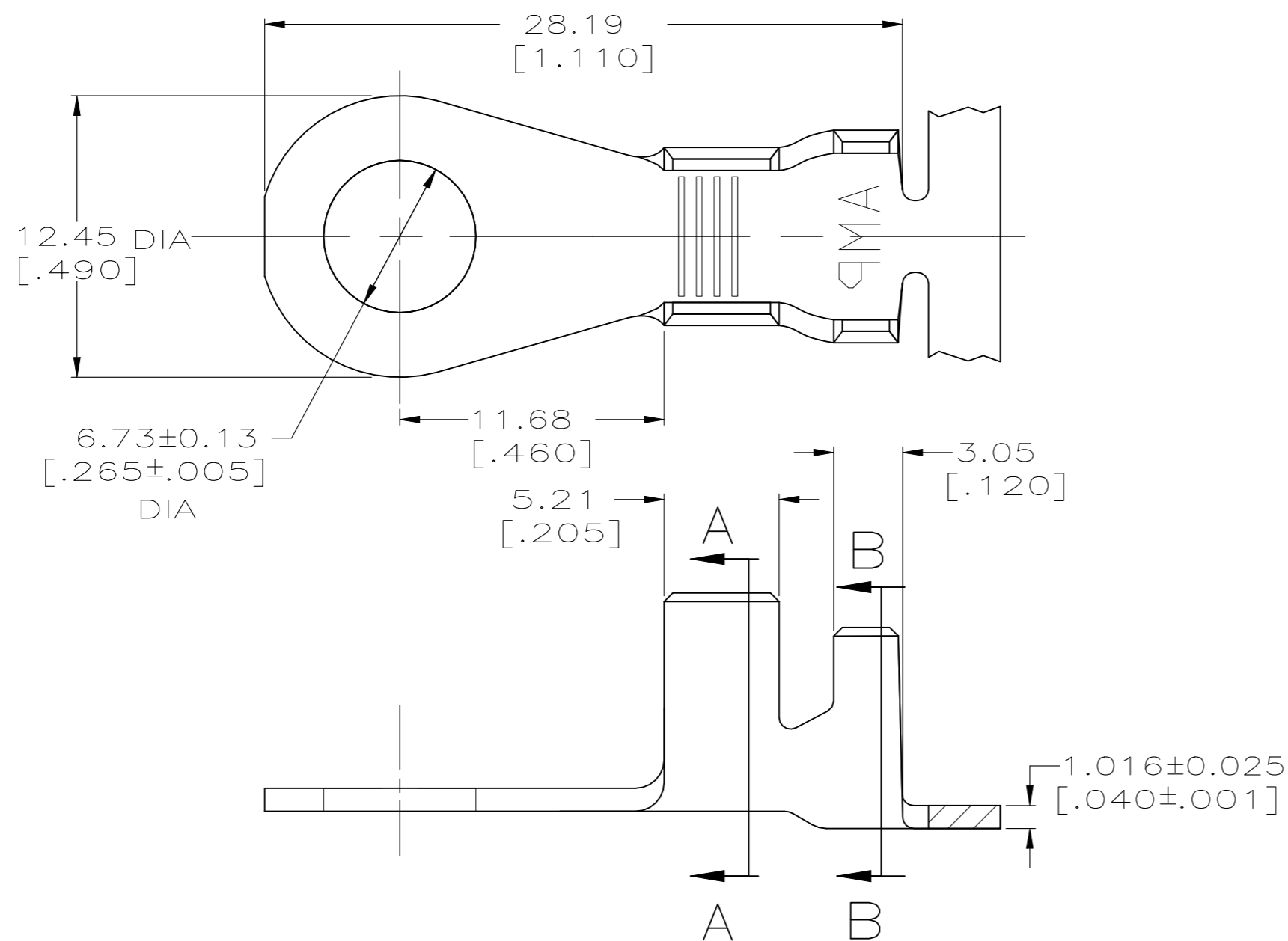


REVISIONS				
P	LTR	DESCRIPTION	DATE	APVD
M3		REVISED PER ECR-23-177372	03JUN2023	DB RE

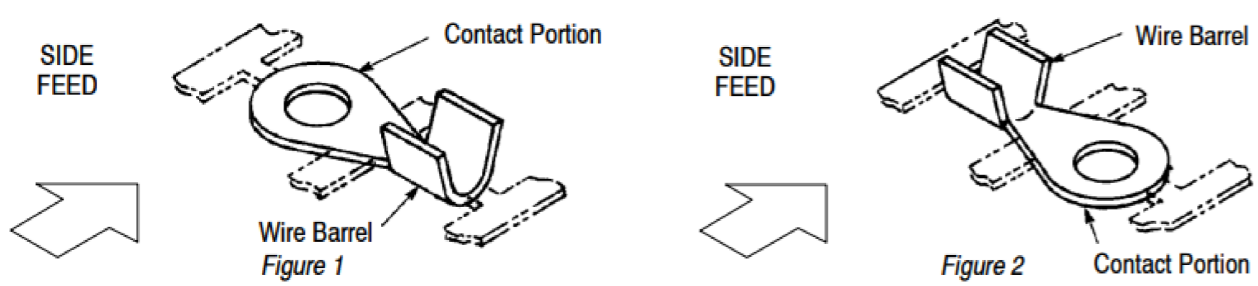
- 1 CONTINUOUS STRIP ON REEL.
- 2 0.002032 [.000080] MIN TIN PL PER MIL-T-10727 OVER 0.001270 [.000050] MIN NICKEL PL PER QQ-N-290.
- 3 REELED OPPOSITE DIRECTION OF -1 P/N.
- 4 REELED WITH INTERLEAVING PAPER.
- 5 PRELIMINARY - NOT FOR PRODUCTION.



SECTION A-A

SECTION B-B

4 3	FIGURE 1	2	3.68-7.37 [.145-.290] DIA	5.0-15.0mm <sup>2</sup> [10-6] AWG	5	61868-7
3	FIGURE 1	2			5	61868-6
4 3	FIGURE 1	TIN			5	61868-5
3	FIGURE 1	TIN				61868-4
OBSOLETE	FIGURE 1	2				61868-2
	FIGURE 2	TIN				61868-1
	REELING DIRECTON	FINISH	INSULATION RANGE	WIRE RANGE	PART NO	



TYPE	WIDTH	STRIP LENGTH ±0.38 [±.015]	TYPE	WIDTH	HEIGHT	WIRE
F OR O	8.64 [.340]	6.73 [.265]	F	7.11 [.280]	4.70 [.185]	15.0mm <sup>2</sup> [6]
					4.14 [.163]	8.0mm <sup>2</sup> [8]
					3.78 [.149]	5.0mm <sup>2</sup> [10]
					±0.051 [±.002]	
INSUL BARREL CRIMP			WIRE BARREL CRIMP			

THIS DRAWING IS A CONTROLLED DOCUMENT.

DIMENSIONS: INCHES

TOLERANCES UNLESS OTHERWISE SPECIFIED:

0 PLC	± -
1 PLC	± -
2 PLC	± 0.25 [.010]
3 PLC	± -
4 PLC	± -
ANGLES	± -

MATERIAL: 082 BRASS

FINISH: SEE TABLE

TE Connectivity

NAME: D DECKER

PRODUCT SPEC: RING

APPLICATION SPEC: -

WEIGHT: 0.000000

CAGE CODE: A2 00779

DRAWING NO: C-61868

RESTRICTED TO: -

CUSTOMER DRAWING

SCALE: 4:1

SHEET: 1 OF 1

REV: M3