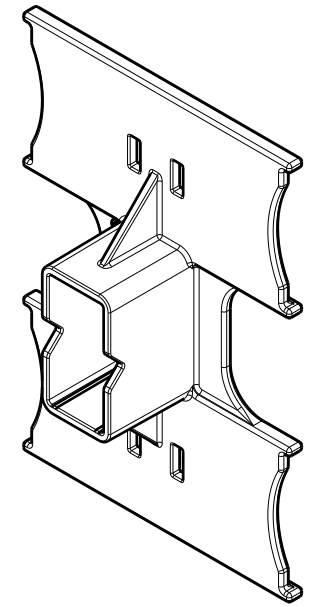
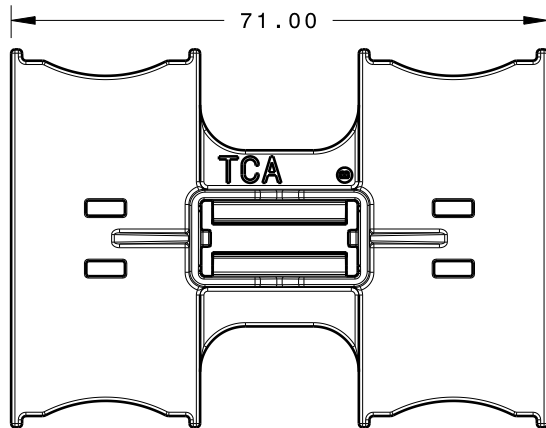


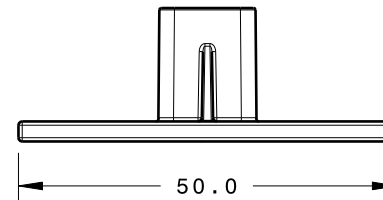
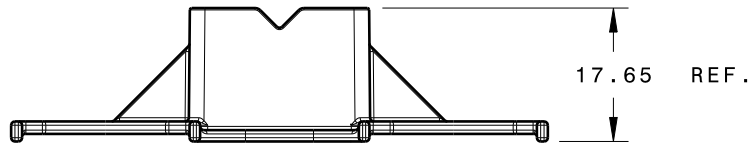
REFERENCE:

PERFORMANCE REQUIREMENTS AT DRY AS MOLDED:

1. APPLICABLE STUDS/WELD STUDS: T5, M5, and M6
2. PUSH ON FORCE: 10 lbs. (45 N) MAX ON EACH APPLICABLE STUD/WELD STUD SIZE.
3. PULL OFF FORCE: 30 lbs. (135N) MIN ON EACH APPLICABLE STUD/WELD STUD SIZE



Isometric view



TYPE NUMBER	MATERIAL	COLOR
BCBRKTSB5	PA66HIRHS	BLACK
BCBRKTSB5	PA66HIRHS	NATURAL



INVENTORS

HellermannTyton®

ALL PROPRIETARY RIGHTS IN THE SUBJECT MATTER SHOWN ON THIS DRAWING ARE EXCLUSIVE PROPERTY OF HELLERMANNTYTON

name	date	city, state
S. ADAMS	1/15/12	MENOMONEE FALLS, WI.

REVISIONS

DR level	by	date	ECN #	part level
04	SJA	12/20/12	012252	B

DIMENSIONS

TOLERANCES	units
.XXXX = ± 0.25	millimeters
.XXX = ± 0.50	
.XX = ± 1.00	
.X = ± 2.00	
∠ = ± 0.50	
unless otherwise specified	

PART

number	SEE CHART	phase	PRODUCTION
name	DUAL BUNDLING BRACKET WITH STUD MOUNT		
material	SEE CHART		

DRAWING

FORMAT	AH	CAD	CATIA V5	SCALE	1:1
VERSION	J				
A- SIZE (landscape)_N01		previous drawing number			
drawn	S. ADAMS	checked	K. VANHULST	approved	
	1/5/12		5/25/12		
type	CUSTOMER		sheet 1 of 1		
number	12-0002-001-CSU				