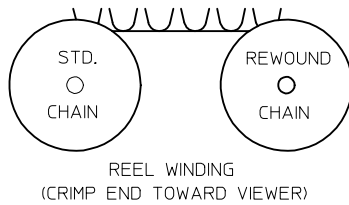
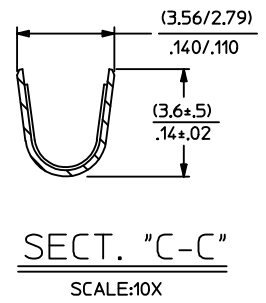
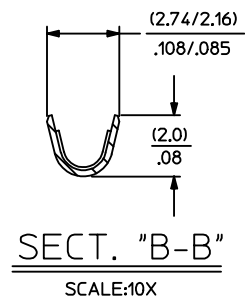
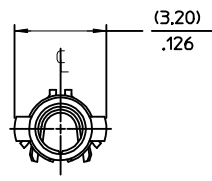
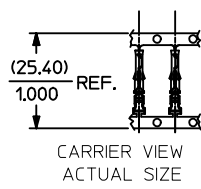


PART NO.	ENG. NO.
02-06-1104	4529-(P901)
02-06-1105	4529-(P901)L
02-06-5117	4529-(P231)
02-06-5118	4529-(P231)L
NOT TOOLED	4529-1(P901)L



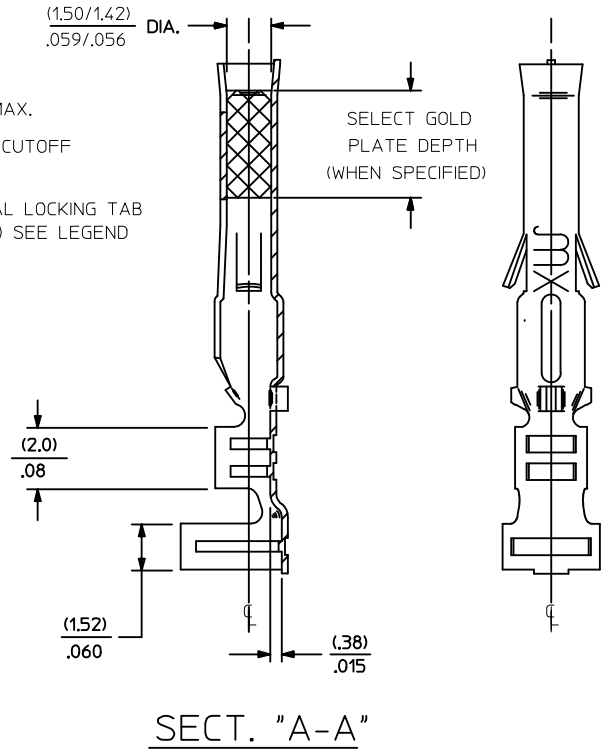
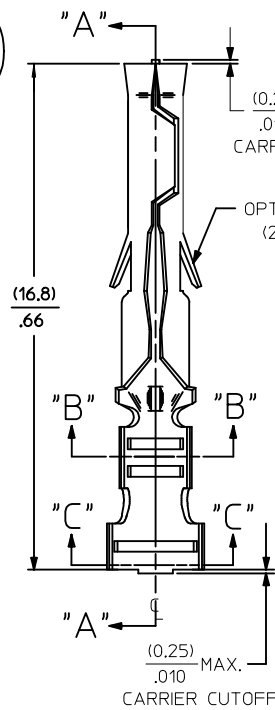
**LEGEND**

4529-\*(\*\*\*\*)\*

BLANK= WITH LOCKING TABS  
1=WITHOUT LOCKING TABS

FORM  
BLANK=STD. CHAIN  
A=REWOUND CHAIN  
L=LOOSE

P=PREPLATE  
BLANK=POSTPLATE  
FINISH CODE



**SECT. "A-A"**

**NOTES:**

- MATERIAL: PHOSPHOR BRONZE
- FINISH:
  - 901 HOT TIN DIP (.00051)/.000020 MIN.
  - 231 SELECT GOLD PLATE (.00125)/.000050 MIN. IN CONTACT AREA, SELECT TIN. (.00250)/.000100 MIN. IN CRIMP AREA OVER(.00125)/.000050 MIN. NICKEL OVERALL.
- PRODUCT SPECIFICATION: PS-02-06
- PACKAGING SPECIFICATION: NOT AVAILABLE
- TERMINALS FOR USE WITH (1.57)/.062 DIA. SERIES HOUSINGS AND WILL ACCEPT 18 THRU 24 AWG WIRE WITH (1.52/3.05)/.060/.120 INSULATION DIA.

REV	DESCRIPTION	DATE	BY
T1	REVISE NOTE 2	2014/07/11	JDF
	EC NO: UCP2015-0104	2014/07/11	JDF
	DRWN: JDF	2014/07/11	JDF
	CHKD: HKL	2014/07/11	JDF
	APPR: FSM	2014/07/11	JDF

QUALITY SYMBOLS	
▽=0	
▽=0	
▽=0	

GENERAL TOLERANCES (UNLESS SPECIFIED)	
	mm
4 PLACES	± .005
3 PLACES	± .010
2 PLACES	± .015
1 PLACE	± .025
0 PLACE	± .050

DIMENSION STYLE		SCALE	DESIGN UNITS	THIRD ANGLE PROJECTION
IN/MM		8:1	INCH	
DRAWN BY		DATE		
GEP		1987/08/17		
CHECKED BY		DATE		
RW		1987/08/17		
APPROVED BY		DATE		
RAS		1987/08/17		
MATERIAL NO.		DOCUMENT NO.		
SEE CHART		SD-4529-*		
SIZE		SHEET NO.		
C		1 OF 1		

**CRIMP TERMINAL, FEMALE  
.062 DIA., PHOS. BRONZE  
FOR 18 THRU 24 GA. WIRE**

**molex**