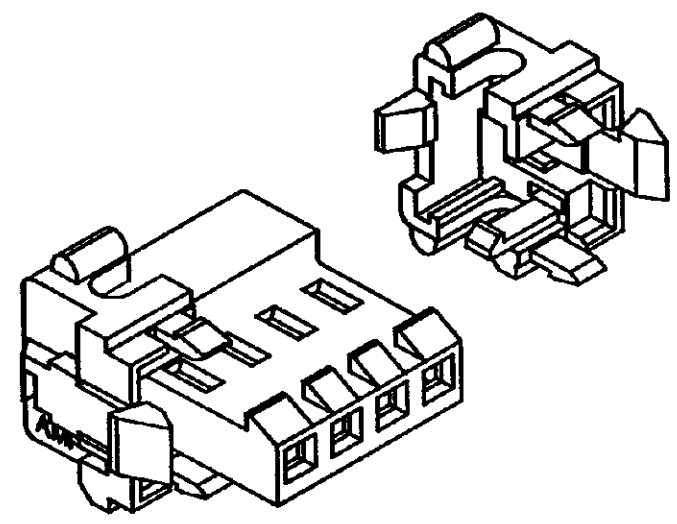
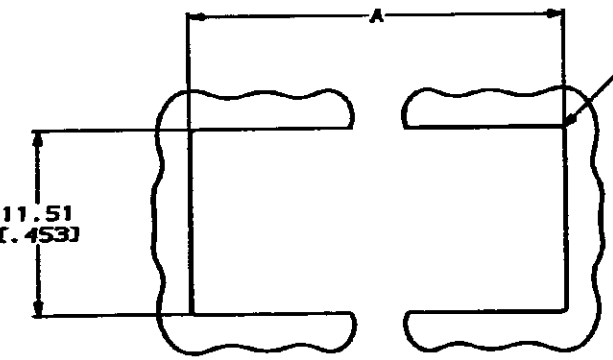


DRAWING MADE IN THIRD ANGLE PROJECTION
 THIS DRAWING IS UNPUBLISHED. RELEASED FOR PUBLICATION
 © COPYRIGHT 1981 BY AMP INCORPORATED. ALL DIMENSIONAL UNITS ARE IN INCHES.

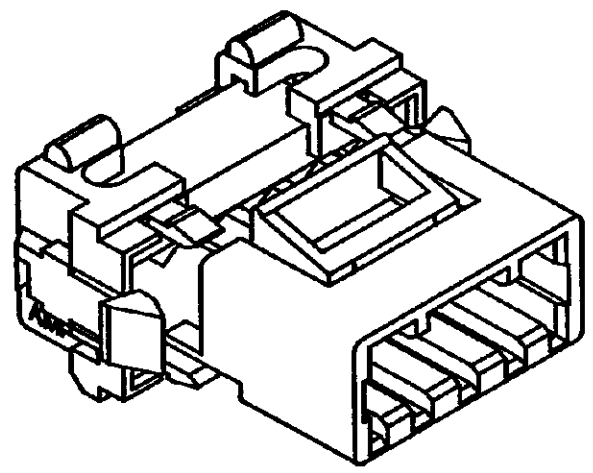
| REV. NO. | | DATE | | DESCRIPTION | |
|----------|----|------|--|-------------|-------------------------------|
| CH | 54 | | | 6 | REV AND REDWN PER ECN CH-3503 |



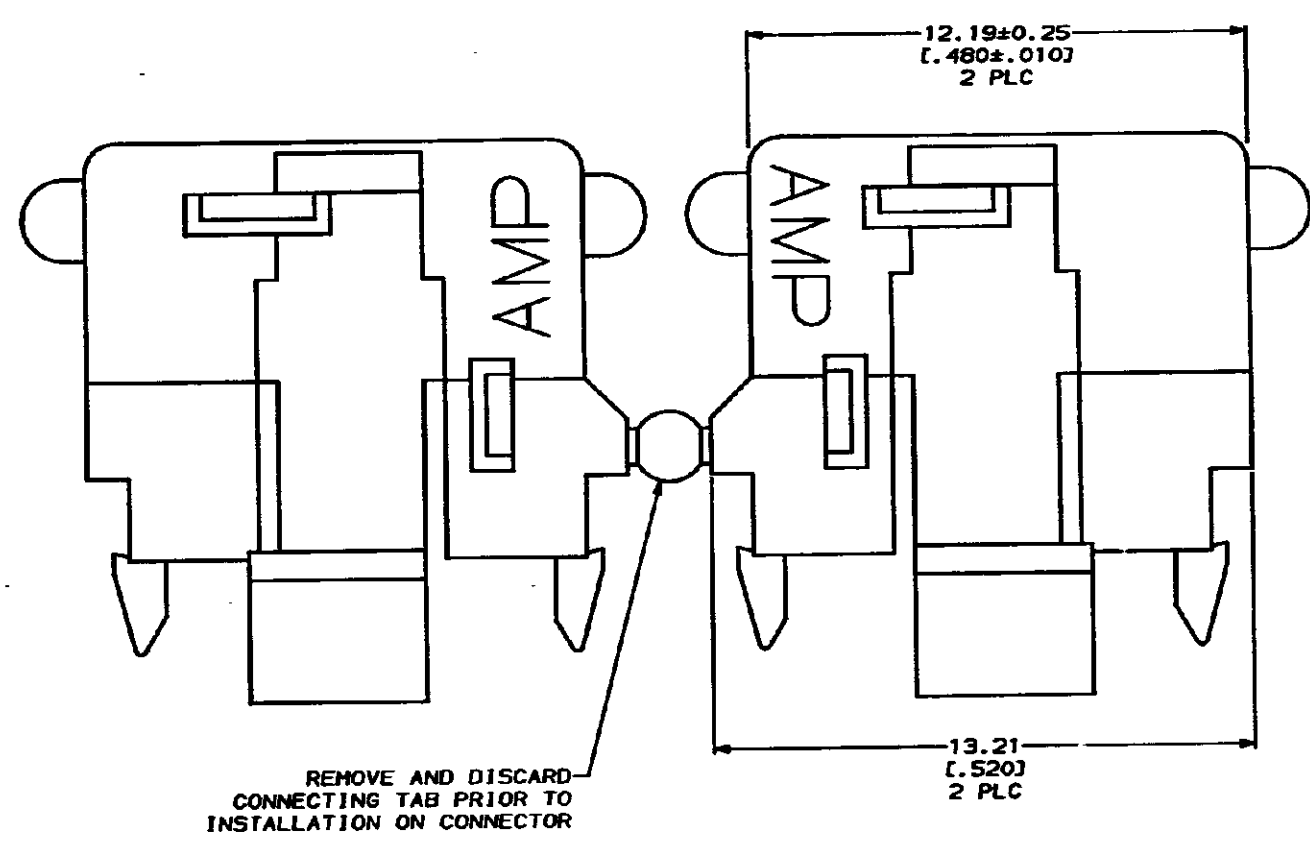
MTA 156 WIRE TO POST CONNECTOR WITH END CAPS INSTALLED
 (RECOMMENDED APPLICATION)



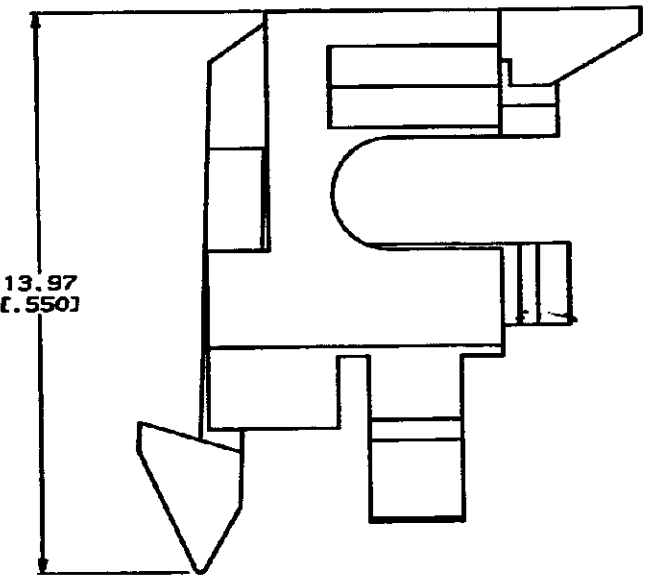
RECOMMENDED PANEL CUTOUT
 PANEL THICKNESS ± 1.70 [0.067] MAX
 SCALE 4:1



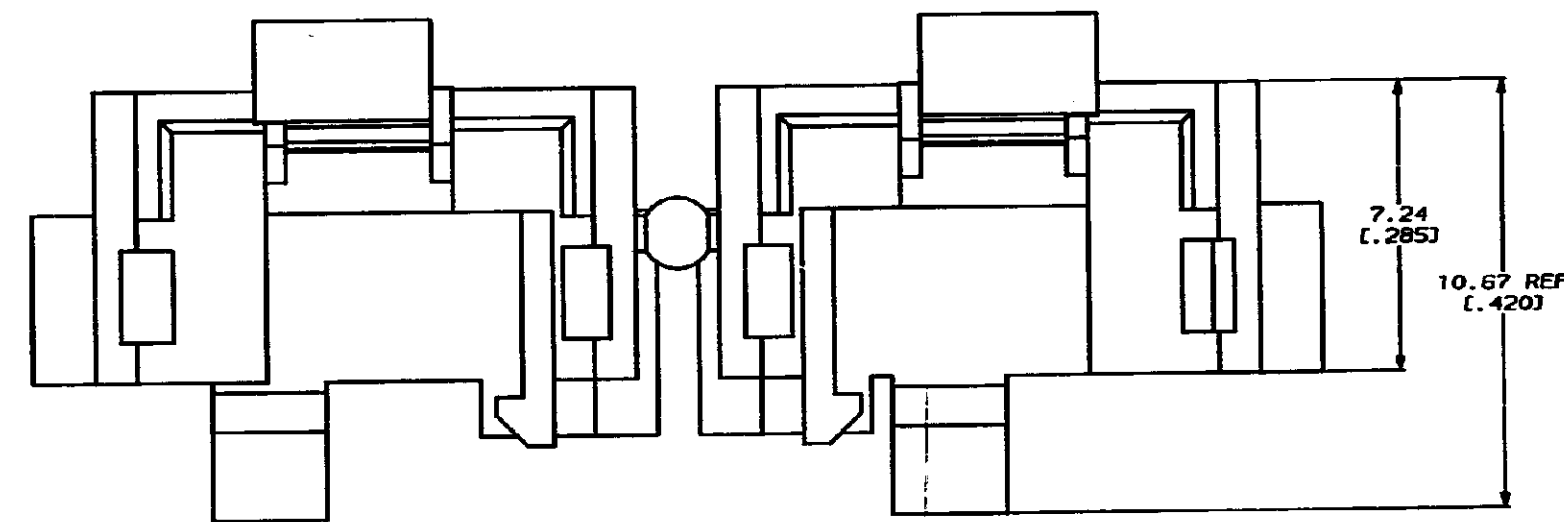
MTA 156 POSTED CONNECTOR WITH END CAPS INSTALLED
 (ALTERNATE APPLICATION)



REMOVE AND DISCARD
 CONNECTING TAB PRIOR TO
 INSTALLATION ON CONNECTOR



1. DIMENSIONS IN BRACKETS
 ARE IN INCHES.



| | 12 POSITION | 24 POSITION | 101.90 [4.012] |
|----------------|---------------|----------------|----------------|
| 12 POSITION | 54.36 [2.140] | | |
| 9 POSITION | 42.47 [1.672] | | |
| 6 POSITION | 30.58 [1.204] | | |
| 4 POSITION | 22.66 [0.892] | 15 POSITION | 66.24 [2.608] |
| 3 POSITION | 18.69 [0.736] | | |
| CONNECTOR SIZE | A | CONNECTOR SIZE | A |

METRIC

| | | | |
|---|-----------------------|--|--|
| DO NOT SCALE PRINT. UNLESS SPECIFIED DIMENSIONS IN MM (INCHES) TOLERANCES ON: 2 PLC DEC ± 3 PLC DEC ± 0.13 [0.005] ANGLES ± | | DR: C. M. 8-27-91 CHK: R. J. 8-27-91 APP: J. M. 8-27-91 APPD: | AMP AMP Incorporated Harrisburg, PA 17105-3000 |
| MATERIAL NYLON, UL 94V-2 BLACK | PRODUCT SPEC - | NAME END CAP, PANEL MOUNTING, MTA 156 | |
| FINISH - | APPLICATION SPEC - | SIZE D | CASE CODE 00779 |
| WEIGHT - | SCALE 10:1 | DRAWING NO 641440 | SHEET 1 OF 1 |

CUSTOMER DRAWING