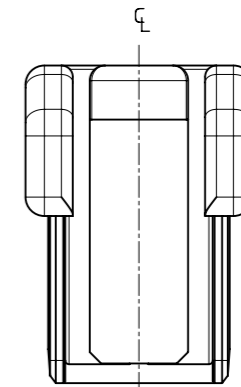
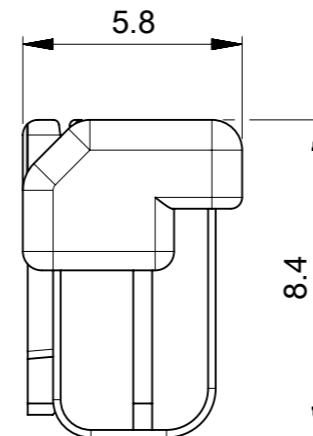


NOTES:

- 適合ターミナルシリーズ : 503657シリーズ  
APPLICABLE TERMINAL : 503657 SERIES
- 嵌合相手 : 503660シリーズ  
MATE WITH : 503660 SERIES
- 偶数極に適用。  
APPLY FOR EVEN CIRCUIT.
- トレードマーク : MXLにて表示。  
キャビティー番号 : 1桁から2桁の数字にて表示。 金型番号 : アルファベット1文字にて表示。  
TRADE MARK IS FORMED BY MXL.  
AND BY 1 - 2 DIGIT NUMBER (TO CAVITY No.)  
AND BY 1 LETTER OF ALPHABET (TO MOLD No.)
- 本製品のプラスチック部に黒点等が確認される場合や、色合いが異なる場合が御座いますが、製品性能に影響は御座いません。  
THERE IS NO INFLUENCE IN THE PRODUCT PERFORMANCE THOUGH THE BLACK SPOT ETC.  
MIGHT BE CONFIRMED TO THE PLASTIC PART OF THIS PRODUCT AND  
THE SHADE MIGHT BE DIFFERENT.
- 製品の取扱いについては、コネクタ取扱説明書(AS-503658-001)を参照願います。  
PLEASE REFER TO INSTRUCTION MANUAL(AS-503658-001).
- ELV及びRoHS適合品  
ELV AND RoHS COMPLIANT.

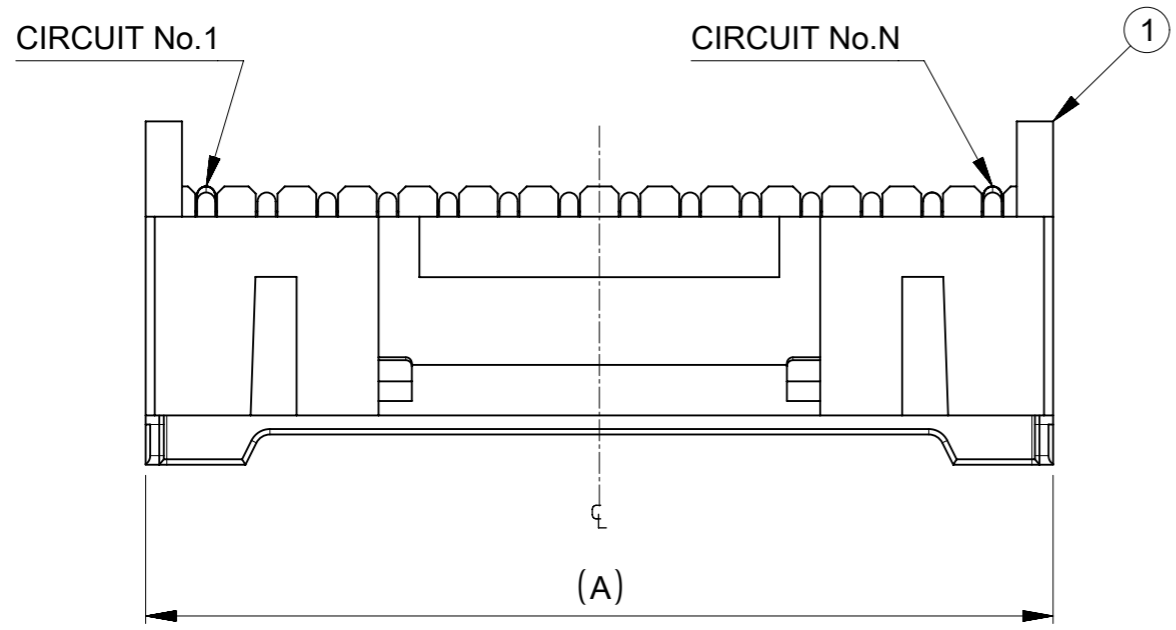


2,3極形状 (1ロック)  
FIGURE OF 2,3 CIRCUIT (1 LOCK)

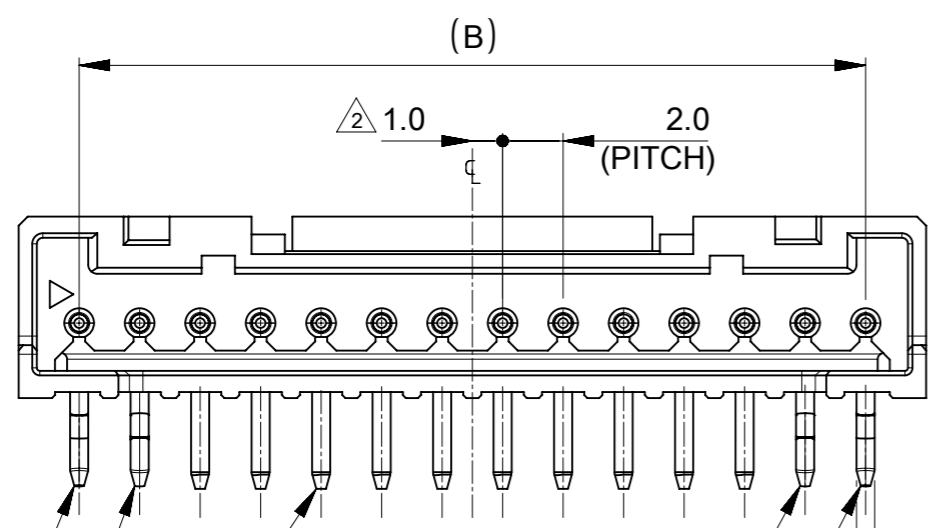
10	14	5036580600	503658-**00	6
8	12	5036580500		5
B	A	ORDER NO.	CONNECTOR SERIES NO.	CIRCUIT

THIS DRAWING CONTAINS INFORMATION THAT IS PROPRIETARY TO MOLEX ELECTRONIC TECHNOLOGIES, LLC AND SHOULD NOT BE USED WITHOUT WRITTEN PERMISSION		CURRENT REV DESC:		<b>molex</b>	
DIMENSION UNITS	SCALE	EC NO: 628958			
MM	5:1	DRWN: AKUMAR19 2018/10/17		PRODUCT CUSTOMER DRAWING	
GENERAL TOLERANCES (UNLESS SPECIFIED)		CHK'D: GGA 2020/01/16		DOCUMENT NUMBER	
4 PLACES	± 0.2	APPR: GGA 2020/01/16		SD-503658-001	
3 PLACES	± 0.25	INITIAL REVISION:		DOC TYPE	
2 PLACES	± 0.3	DRWN: SSATO02 2010/08/06		PSD	
1 PLACE	± 0.1	APPR: NUKITA 2010/08/16		DOC PART	
0 PLACES	±	ANGULAR TOL ± 1.0°		001	
DRAFT WHERE APPLICABLE MUST REMAIN WITHIN DIMENSIONS		THIRD ANGLE PROJECTION	DRAWING	SERIES	SHEET NUMBER
			A3-SIZE	503658	1 OF 1
		MATERIAL NUMBER	CUSTOMER		
		SEE TABLE	GENERAL MARKET		

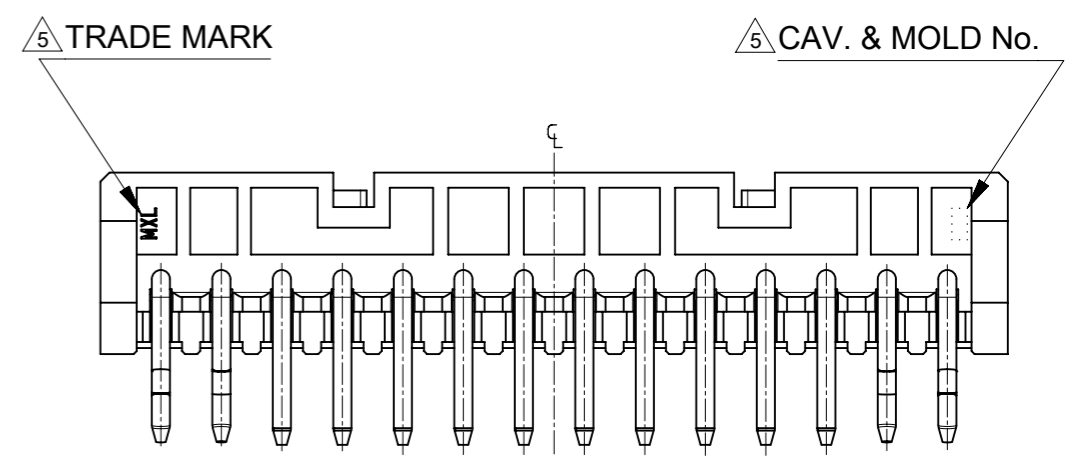
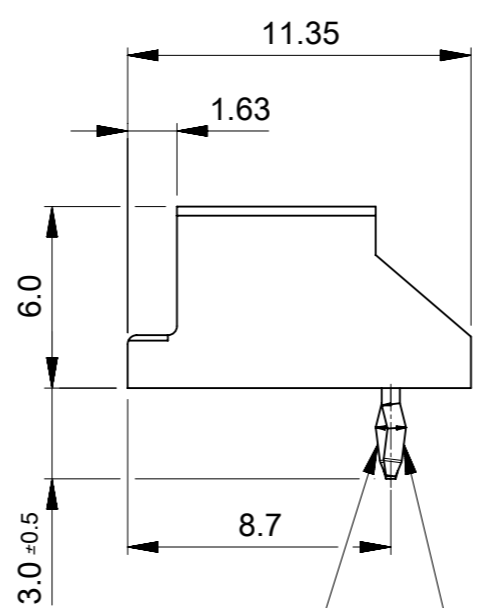
部品 PART	材質 MATERIAL
ハウジング HOUSING	ポリエステル(PBT) UL94V-0 POLYESTER UL94V-0 色 : ナチュラル(白) COLOR : NATURAL(WHITE)



(A)



(B)



- ③ ④ キンク形状Ⅰ  
KINK FORM
- ③ ④ キンク形状Ⅱ  
KINK FORM
- ③ ④ キンク形状Ⅱ  
KINK FORM
- ③ ④ キンク形状Ⅰ  
KINK FORM
- ③ ④ キンク形状Ⅱ  
KINK FORM
- ③ ④ キンク形状Ⅰ  
KINK FORM

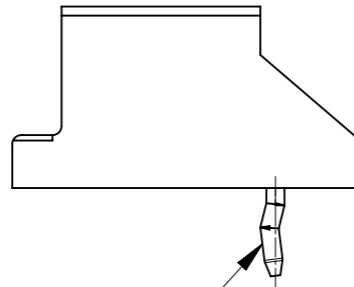
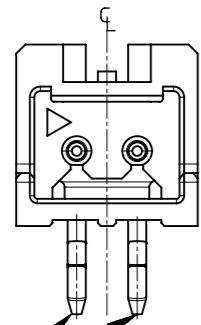
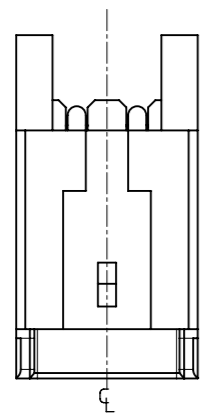
No.	部品 PART	材質 MATERIAL
①	ハウジング HOUSING	ポリエステル(PBT),ガラス充填,UL94V-0 POLYESTER, GLASS FILLED, UL94V-0 色 : ナチュラル (白) COLOR : NATURAL (WHITE)
②	ピン PIN	黄銅, 錫めっき BRASS, Sn PLATED

GENERAL TOLERANCES (UNLESS SPECIFIED)		
10 UNDER		±0.2
10 OVER 30 UNDER		±0.25
30 OVER		±0.3

10	14	503660-0610	6	503660-**-10
8	12	503660-0510	5	ボス無(WITHOUT BOSS)
B	A	TRACK PACKAGE	CIRCUIT	CONNECTOR SERIES NO.
		ORDER NO.		

THIS DRAWING CONTAINS INFORMATION THAT IS PROPRIETARY TO MOLEX ELECTRONIC TECHNOLOGIES, LLC AND SHOULD NOT BE USED WITHOUT WRITTEN PERMISSION

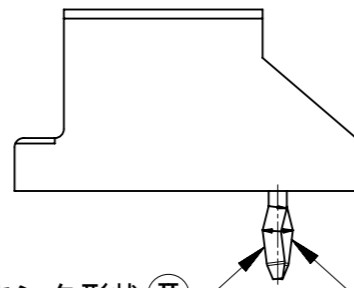
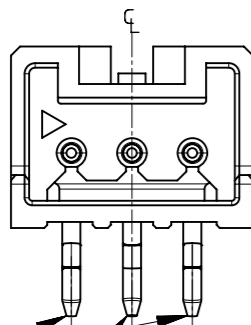
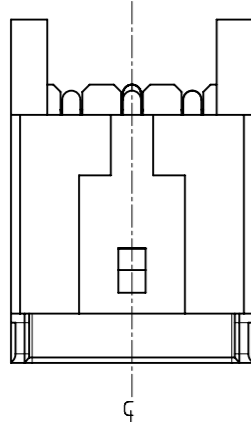
DIMENSION UNITS mm	SCALE 4:1	CURRENT REV DESC:				
GENERAL TOLERANCES (UNLESS SPECIFIED)		<b>molex</b> 2.0 W/B CONN. SINGLE DIP R/A PLUG HS'G ASS'Y WITHOUT BOSS PRODUCT CUSTOMER DRAWING				
4 PLACES ±	MM INCH				EC NO: 620398	2019/01/15
3 PLACES ±					DRWN: AKUMAR19	2019/10/18
2 PLACES ±					CHK'D: GGA	2019/10/18
1 PLACE ±					APPR: GGA	2019/10/18
0 PLACES ±		INITIAL REVISION:				
ANGULAR TOL ± 1.0°		DRWN: SSATO02	2010/08/06			
		APPR: NUKITA	2010/08/16			
DRAFT WHERE APPLICABLE MUST REMAIN WITHIN DIMENSIONS	THIRD ANGLE PROJECTION	DRAWING A3-SIZE	SERIES 503660	MATERIAL NUMBER SEE TABLE		
		CUSTOMER GENERAL MARKET		SHEET NUMBER 1 OF 3		



△4 キンク形状 Ⅱ  
KINK FORM

△4 キンク形状 Ⅱ  
KINK FORM

FIGURE OF 2 CIRCUIT  
SCALE 4:1



△4 キンク形状 Ⅱ  
KINK FORM

△4 キンク形状 Ⅱ  
KINK FORM

△4 キンク形状 Ⅰ  
KINK FORM

△4 キンク形状 Ⅰ  
KINK FORM

FIGURE OF 3 CIRCUIT  
SCALE 4:1

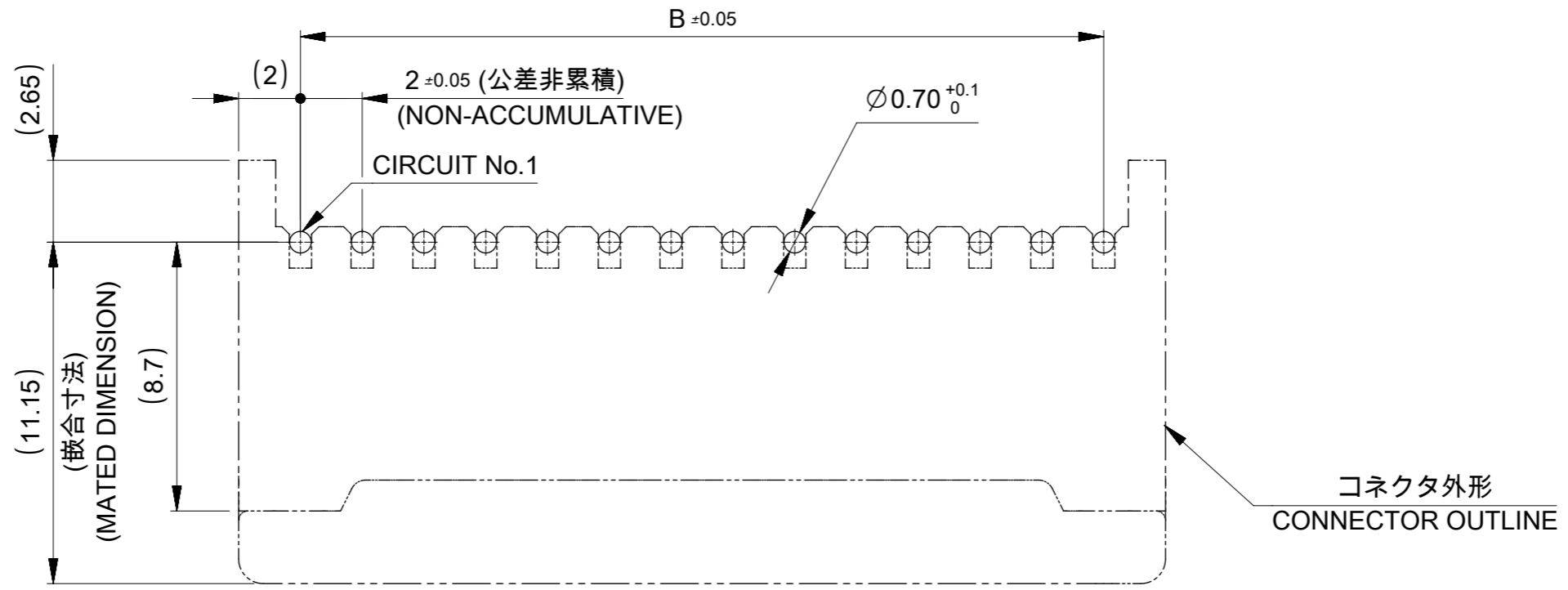
NOTES:

1. 嵌合相手 : 503658シリーズ  
MATE WITH : 503658 SERIES.
2. 偶数極に適用。  
APPLY FOR EVEN CIRCUIT.
3. キンクは両端2ピンに付加。  
KINK ATTACHED TO THE POSITION OF 2PINS TO BOTH OUTSIDE ENDS.
4. 2極以外のキンク形状は両サイドが Ⅰ、それ以外のキンク形状は全て Ⅱ形状とする。  
3極のキンク形状は両サイドに Ⅱ、2ピン目に Ⅰ形状を付加する。  
MORE THAN 2 CIRCUIT : PINS AT BOTH ENDS ARE KINK FORMED TO Ⅰ.  
THE OTHER PINS ARE KINK FORMED TO Ⅱ.  
3 CIRCUIT : PINS AT BOTH ENDS ARE KINK FORMED TO Ⅱ.  
THE OTHER PINS ARE KINK FORMED TO Ⅰ.
5. トレードマーク : MXLにて表示。  
キャビティー番号 : 1桁から2桁の数字にて表示。 金型番号 : アルファベット1文字にて表示。  
TRADE MARK IS FORMED BY MXL.  
AND BY 1 - 2 DIGIT NUMBER (TO CAVITY No.)  
AND BY 1 LETTER OD ALPHABET (TO MOLD No.)
6. 本製品のプラスチック部に黒点等が確認される場合や、色合いが異なる場合が御座いますが、製品性能に影響は御座いません。  
THERE IS NO INFLUENCE IN THE PRODUCT PERFORMANCE THOUGH THE BLACK SPOT ETC.  
MIGHT BE CONFIRMED TO THE PLASTIC PART OF THIS PRODUCT AND  
THE SHADE MIGHT BE DIFFERENT.
7. 製品の取り扱いについては、コネクタ取扱い説明書(AS-503658-001)を参照願います。  
PLEASE REFER TO INSTRUCTION MANUAL(AS-503658-001)
8. ELV及びRoHS適合品  
ELV AND RoHS COMPLIANT

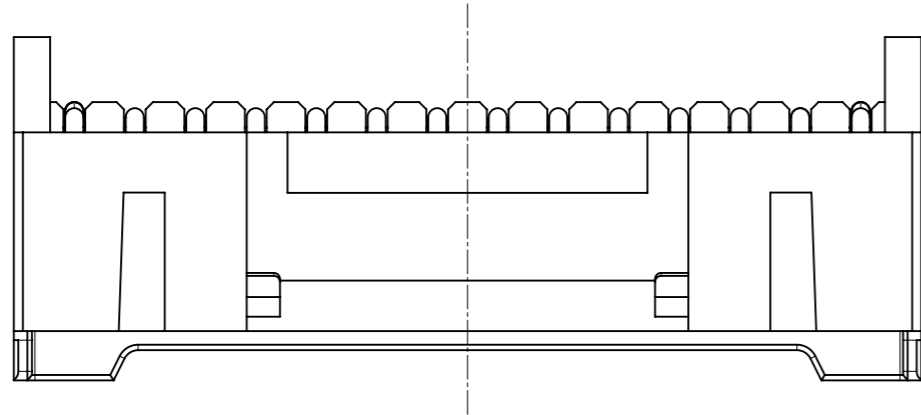
THIS DRAWING CONTAINS INFORMATION THAT IS PROPRIETARY TO MOLEX ELECTRONIC TECHNOLOGIES, LLC AND SHOULD NOT BE USED WITHOUT WRITTEN PERMISSION

DIMENSION UNITS		SCALE		CURRENT REV DESC:			
mm		4:1		<p><b>molex</b></p> <p>2.0 W/B CONN. SINGLE DIP R/A PLUG HS'G ASS'Y WITHOUT BOSS</p> <p>PRODUCT CUSTOMER DRAWING</p> <p>EC NO: 620398 DRWN: AKUMAR19 2019/01/15 CHK'D: GGA 2019/10/18 APPR: GGA 2019/10/18</p> <p>INITIAL REVISION: DRWN: SSATO02 2010/08/06 APPR: NUKITA 2010/08/16</p> <p>DOCUMENT NUMBER: SD-503660-001 DOC TYPE: PSD DOC PART: 001 REVISION: C</p> <p>DRAFT WHERE APPLICABLE MUST REMAIN WITHIN DIMENSIONS</p> <p>THIRD ANGLE PROJECTION</p> <p>DRAWING: A3-SIZE SERIES: 503660 MATERIAL NUMBER: SEE TABLE CUSTOMER: GENERAL MARKET SHEET NUMBER: 2 OF 3</p>			
GENERAL TOLERANCES (UNLESS SPECIFIED)							
4 PLACES	±	MM	INCH				
3 PLACES	±						
2 PLACES	±						
1 PLACE	±						
0 PLACES	±						
ANGULAR TOL ± 1.0°							

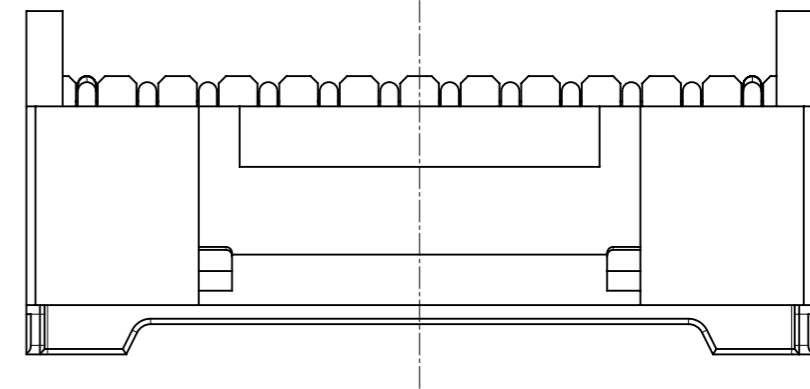
GENERAL TOLERANCES (UNLESS SPECIFIED)	
10 UNDER	±0.2
10 OVER 30 UNDER	±0.25
30 OVER	±0.3



基板取付穴推奨寸法 (マウント面)  
 RECOMMENDED P.C.BOARD  
 HOLE DIMENSIO  
 (MOUNTING SIDE)  
 (t=1.2 ~ 1.6)



ロック面 14,15極形状  
 LOCK SIDE SHAPE OF 14,15CKT.



ロック面 4,5,6,8,10,12極形状  
 LOCK SIDE SHAPE OF 4,5,6,8,10,12CKT.

THIS DRAWING CONTAINS INFORMATION THAT IS PROPRIETARY TO MOLEX ELECTRONIC TECHNOLOGIES, LLC AND SHOULD NOT BE USED WITHOUT WRITTEN PERMISSION											
DIMENSION UNITS		SCALE		CURRENT REV DESC:						<b>molex</b>	
mm		4:1		EC NO: 620398 DRWN: AKUMAR19 2019/01/15 CHK'D: GGA 2019/10/18 APPR: GGA 2019/10/18							
GENERAL TOLERANCES (UNLESS SPECIFIED)				MM		INCH		PRODUCT CUSTOMER DRAWING			
4 PLACES ±				±		±		DOCUMENT NUMBER			
3 PLACES ±				±		±		SD-503660-001			
2 PLACES ±				±		±		DOC TYPE			
1 PLACE ±				±		±		PSD			
0 PLACES ±				±		±		DOC PART			
ANGULAR TOL ± 1.0°				±		±		001			
DRAFT WHERE APPLICABLE MUST REMAIN WITHIN DIMENSIONS				THIRD ANGLE PROJECTION		DRAWING		SERIES		MATERIAL NUMBER	
30 OVER ±0.3				A3-SIZE		503660		CUSTOMER		SEE TABLE	
10 OVER 30 UNDER ±0.25				A3-SIZE		503660		GENERAL MARKET		SHEET NUMBER	
10 UNDER ±0.2				A3-SIZE		503660		GENERAL MARKET		3 OF 3	