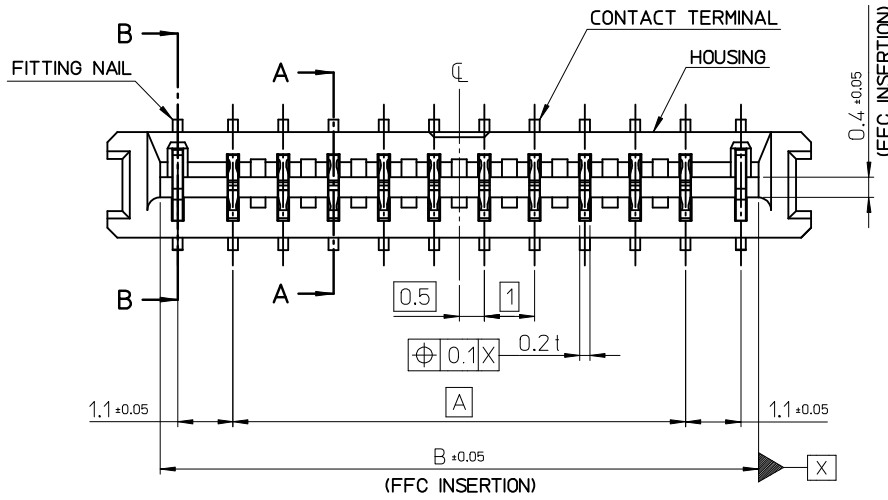
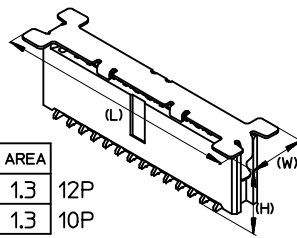


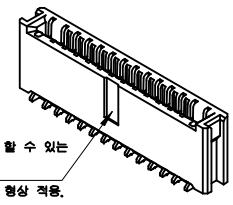
10 9 8 7 6 5 4 3 2 1



ISOMETRIC VIEW (HOUSING ASSY WITH VACUUM COVER)

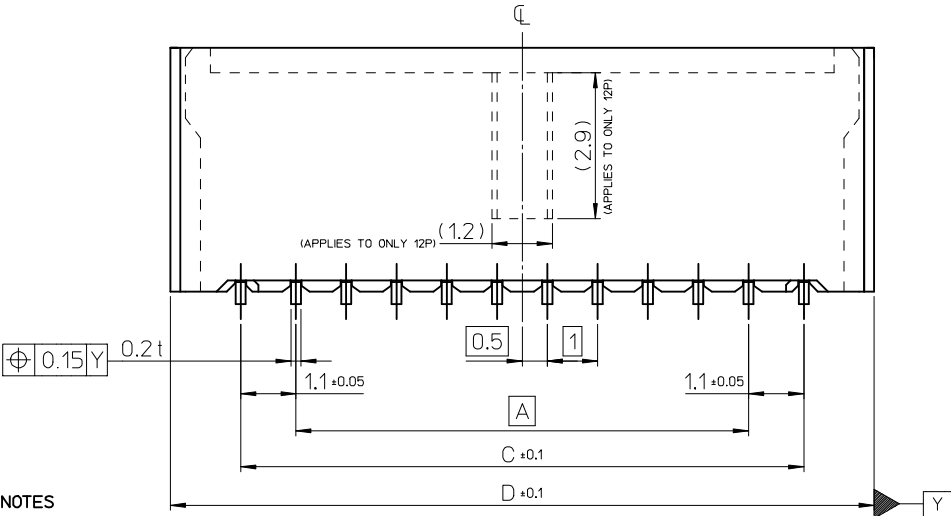
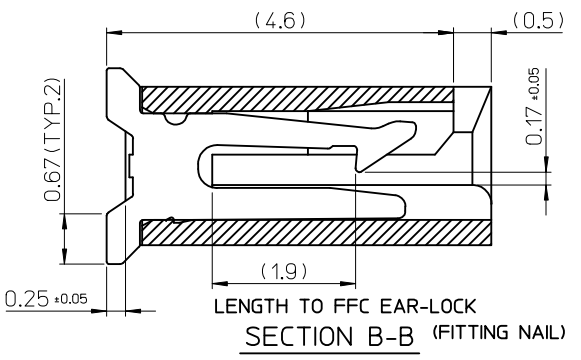
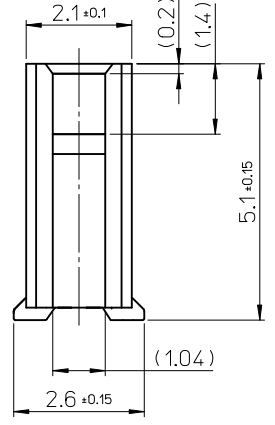
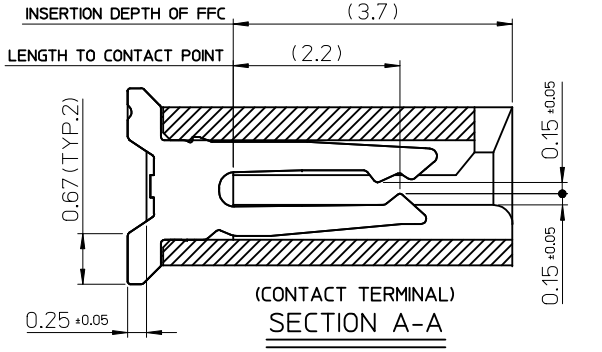
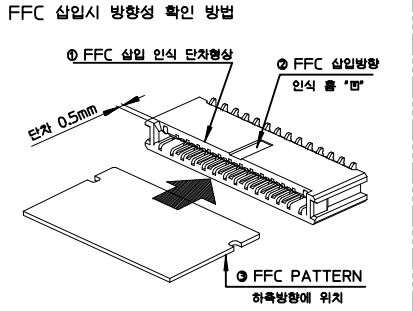


ISOMETRIC VIEW (HOUSING ASSY)



L	W	H	VACUUM AREA	
17.4	4.1	5.3	14 x 1.3	12P
15.4	4.1	5.3	12 x 1.3	10P

FFC 삽입방향을 인식 할 수 있는 홈 '마'형상 추가
VERTICAL 12P에만 형상 적용.



- NOTES
- MATERIAL
 - HOUSING : LCP VECTRA E473i. GLASS FILLED, UL94V-0 COLOR : BLACK
 - TERMINAL : COPPER ALLOY, C52100-SH (THICKNESS : 0.2)
 - FITTING NAIL : COPPER ALLOY, C52100-SH (THICKNESS : 0.2)
 - FINISHES
 - TERMINAL : TIN(Sn) OVER NICKEL(Ni) PLATING. Tin(Sn) 1~3 MICROMETER, NICKEL(Ni) 1~3 MICROMETER
 - FITTING NAIL : TIN(Sn) OVER NICKEL(Ni) PLATING. Tin(Sn) 1~3 MICROMETER, NICKEL(Ni) 1~3 MICROMETER
 - SOLDER TAILS AND FITTING NAILS
COPLANARITY IS TO BE 0.08 MAXIMUM.

NEW RELEASED EC NO: KOR2014-0045 DRWN: JHCHANG 2013/10/22 CHKD: KSK IM 2013/10/22 APPR: YSK IM02 2013/10/23	QUALITY SYMBOLS	GENERAL TOLERANCES (UNLESS SPECIFIED)	DIMENSION STYLE	SCALE	DESIGN UNITS	THIRD ANGLE PROJECTION	
	▽=0 ∇=0	mm INCH	MM ONLY		METRIC		
		4 PLACES ± --- ± --- 3 PLACES ± 0.05 ± --- 2 PLACES ± 0.05 ± --- 1 PLACE ± 0.1 ± ---	DRAWN BY DATE JHCHANG 2013/01/22	CHECKED BY DATE KSK IM 2013/01/22	TITLE 1.0 PITCH FFC CONN. NON-ZIF TYPE		
		ANGULAR ± 1 °	APPROVED BY DATE YSK IM02 2013/01/28	MATERIAL NO.	DOCUMENT NO.	SHEET NO. 1 OF 3	

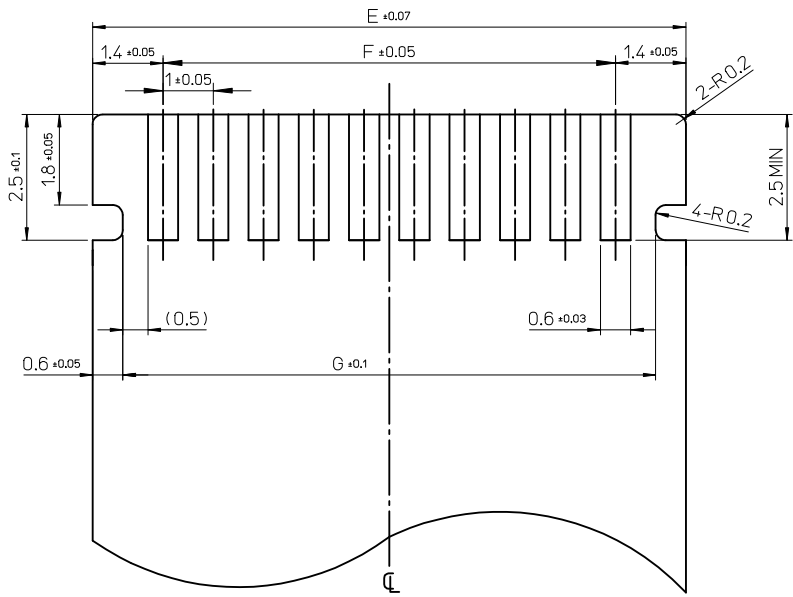
DRAFT WHERE APPLICABLE MUST REMAIN WITHIN DIMENSIONS

SEE TABLE

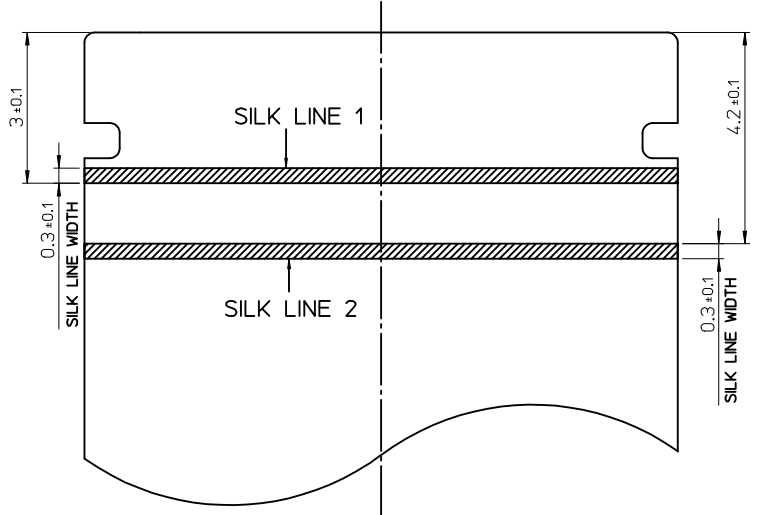
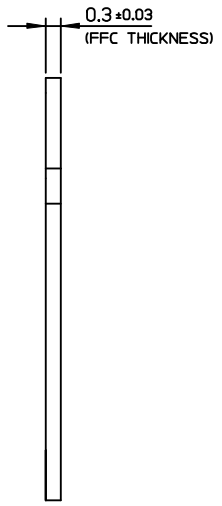
THIS DRAWING CONTAINS INFORMATION THAT IS PROPRIETARY TO MOLEX INCORPORATED AND SHOULD NOT BE USED WITHOUT WRITTEN PERMISSION



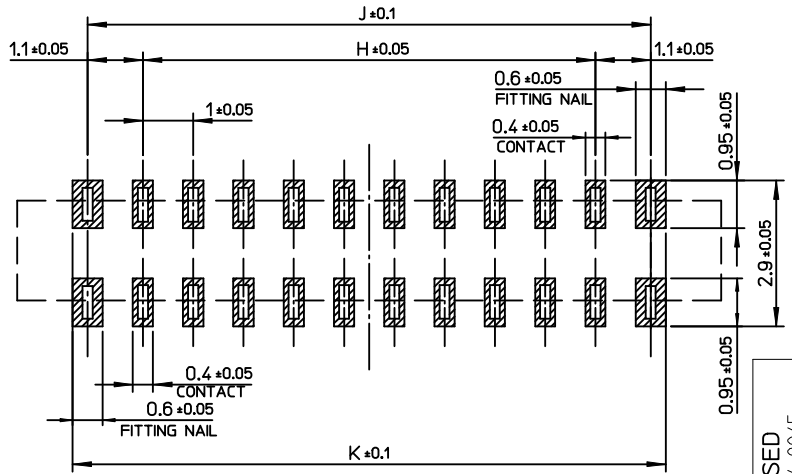
9 8 7 6 5 4 3 2 1



CONTACT SIDE



BACK SIDE



Recommended PCB Pattern Layout
(COMPONENT SIDE)

1. RECOMMENDED FFC SPECIFICATION

WHEN FFC FULLY INSERT → SILK LINE 1 : INVISIBLE
SILK LINE 2 : VISIBLE

2. INSTRUCTION UPON USAGE

- PROHIBIT TO USE THE SAME FFC TWICE BECAUSE OF THE BREAKING RISK OF EAR-LOCK PART.
- CONNECTOR IS AVAILABLE TO INSERT 30 TIMES BUT FFC IS NOT AVAILABLE TO INSERT 30 TIMES IF IT IS JUST FFC SINGLE PART.

13.8	13.2	11.0	12.6	11.0	13.8	1041761217	12
11.8	11.2	9.0	10.6	9.0	11.8	1041761017	10
K	J	H	G	F	E	MATERIAL NO.	CKT

NEW RELEASED
EC NO: KOR2014-0045
DRWN: JHCHANG 2013/10/22
CHKD: KSK IM 2013/10/22
APPR: YSK IM02 2013/10/23

REV	DESCRIPTION
▽=0	QUALITY SYMBOLS
▽=0	

GENERAL TOLERANCES (UNLESS SPECIFIED)	
	mm INCH
4 PLACES	± --- ± ---
3 PLACES	± 0.005 ± ---
2 PLACES	± 0.05 ± ---
1 PLACE	± 0.1 ± ---
ANGULAR ± 1°	
DRAFT WHERE APPLICABLE MUST REMAIN WITHIN DIMENSIONS	

DIMENSION STYLE	
MM ONLY	
DRAWN BY	DATE
JHCHANG	2013/01/22
CHECKED BY	DATE
KSK IM	2013/01/22
APPROVED BY	DATE
YSK IM02	2013/01/28
MATERIAL NO.	
SEE SHEET 1	

SCALE	DESIGN UNITS	THIRD ANGLE PROJECTION
1:1	METRIC	
TITLE		
1.0 PITCH FFC CONN. NON-ZIF TYPE		
molex		
DOCUMENT NO.	SHEET NO.	
SD-104176-001	2 OF 3	
THIS DRAWING CONTAINS INFORMATION THAT IS PROPRIETARY TO MOLEX INCORPORATED AND SHOULD NOT BE USED WITHOUT WRITTEN PERMISSION		

(HOLE PITCH) 4.0 ±0.1

12.0 ±0.1 (POCKET PITCH)

2.3 ±0.15

1.75 ±0.1

0.45 ±0.05

5.9

PULL OUT DIRECTION

(32.4)

Ø 1.5 ±0.1

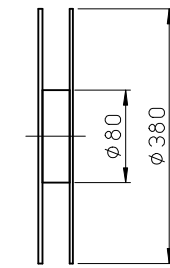
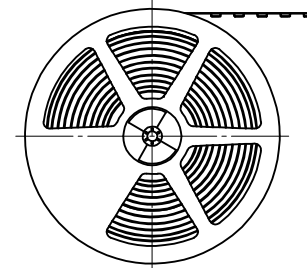
2-1.4 ±0.2

4.65

0.5 ±0.2

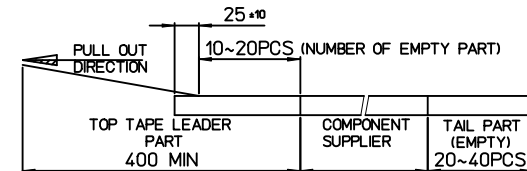
(WIDTH)

SECTION G-G



NOTES

- 1. QUANTITY OF CONNECTORS : 1400PCS/REEL
- 2. LEAD LENGTH



- 3. PEELING OFF FORCE OF COVER TAPE : 0.1N~0.59N(10.2GF~60GF)
(PEELING DIRECTION AS SHOW IN FOLLOW FIG.)
PEELING OFF SPEED : 300mm/Min.(Ref.)



- 4. FLASH IN ANY PORTION SHOULD BE LESS THAN 0.20mm MAX.

26.5	1,400	16.2	14.2	28.4	32.0	12
26.5	1,400	14.2	12.2	28.4	32.0	10
COVER TAPE	Q'TY/REEL	D	C	B	A	CKT

ASS'Y FEED DIR.
CUSTOMER FEED DIR

Ø 1.5 ±0.1

0.2 ±0.05

5.45 ±0.1
0.45 ±0.05

3.4 ±0.15

SECTION H-H

NEW RELEASED EC NO: KOR2014-0045 DRWN: JHCHANG 2013/10/22 CHKD: KSKIM 2013/10/22 APPR: YSKIM02 2013/10/23	QUALITY SYMBOLS ▽=0 ∇=0	GENERAL TOLERANCES (UNLESS SPECIFIED)		DIMENSION STYLE MM ONLY		SCALE 1:1		DESIGN UNITS METRIC		THIRD ANGLE PROJECTION		
			mm	INCH	DRAWN BY JHCHANG	DATE 2013/01/22	TITLE 1.0 PITCH FFC CONN. NON-ZIF TYPE					
		4 PLACES	± ---	± ---	CHECKED BY KSKIM	DATE 2013/01/22						
		3 PLACES	± 0.005	± ---	APPROVED BY YSKIM02	DATE 2013/01/28						
2 PLACES	± 0.05	± ---	MATERIAL NO. SEE SHEET 1		DOCUMENT NO. SD-104176-001		SHEET NO. 3 OF 3					
1 PLACE	± 0.1	± ---	DRAFT WHERE APPLICABLE MUST REMAIN WITHIN DIMENSIONS									