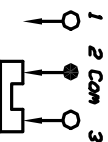
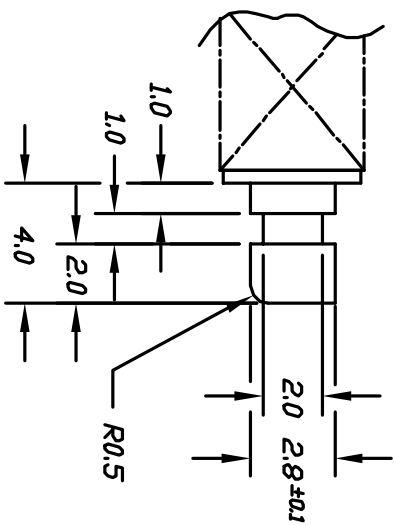
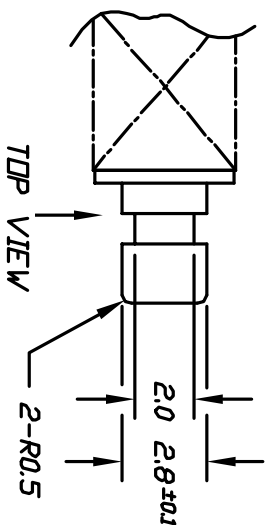


RECOMMEND P.C.B. LAYOUT



CIRCUIT: SPDT

CONTACT CONFIGURATION

NOTES:

1. ALL DIMENSIONS IN MM
2. GENERAL TOLERANCE: X.X=±0.4
X.XX=±0.25
3. TERM. NOS. FOR REF. ONLY
4. RATING: DC 30V, 0.3A
5. CONTACT MATERIAL:
PHOSPHOR BRONZE W/ SILVER PLATING
6. CONTACT RESISTANCE: 20 milli-Ohms max.
7. DIELECTRIC STRENGTH: 1,000V rms @ Sea Level
8. OPERATING FORCE: 230±100gf
9. TRAVEL : FULL 3.5mm; LOCK 2.5mm

Ⓑ

REV.	ECN NO.	DESCRIPTION	DATE	CHKD
B	12310	REVISED AND REDRAWN	7/19/02	CB
A	10499	RELEASED FOR PRODUCTION	1/18/02	MM

TITLE		SCALE		DATE		DR		DWG		REV	
LC 1258 EE SP (LATCHING)		2:1		1/18/00		MM		P070226		B	

E-SWITCH®

(ACTUATOR DETAIL) SCALE 4:1

THE INFORMATION CONTAINED IN THIS DOCUMENT IS PROPRIETARY TO E-SWITCH AND IS NOT TO BE COPIED OR TRANSMITTED