



Product Change Notification

PCN20-23-JS Series Slide Switch Base Material Improvement

C&K

Reservoir Place, 1601 Trapelo Road Suite 178, Waltham MA 02451
Tel: +617.969.3700 ckswitches.com

Document subject to change without prior notice

PCN20-23-JS Series Slide Switch Base Material Improvement

Page 1/5

Document revision

Revision	Date	Description	Author
A	16 December 2020	JS Series Slide Switch Base Material Improvement	Tanios BouRamia
B	22 August 2021	Added JS207011SCQNR to list of applicable part numbers	Tanios BouRamia
C	08 September 2021	Added Leadframe comparison & Figure captions	Tanios BouRamia
D	28 October 2021	Added JS207011JCQNR to list of applicable part numbers	Cathy Zhao

C&K

Reservoir Place, 1601 Trapelo Road Suite 178, Waltham MA 02451
Tel: +617.969.3700 ckswitches.com

Document subject to change without prior notice

PCN20-23-JS Series Slide Switch Base Material Improvement

Page 2/5



Summary

1. Purpose	4
2. Overview	4
3. Impact of Change	4
4. Part Numbers Affected	4
5. Date of application	5
6. Conditions of Application	5
7. Support	5

C&K

Reservoir Place, 1601 Trapelo Road Suite 178, Waltham MA 02451
Tel: +617.969.3700 ckswitches.com

Document subject to change without prior notice

PCN20-23-JS Series Slide Switch Base Material Improvement

1. Purpose

This notification is to announce a base material improvement and corresponding cosmetic change for select JS series slide switches.

2. Overview

This change indicates the new base material used for select JS series slide switches as well as a cosmetic only change to the visual appearance of the parts as a result of the base material improvement. These changes in no way affect the overall form, fit, or function of the parts.

3. Impact of Change

- 3.1 The base material plastic is changing from PA46 to PPA in order to leverage the lower water absorption of PPA as compared with PA46.
- 3.2 The underlying leadframe for the parts has been modified to improve overall coplanarity/stability of the part.

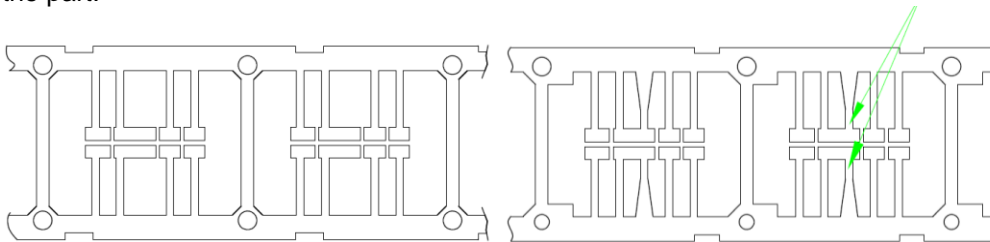


Figure 1: Older Leadframe Design (left) vs. New Leadframe Design (Right) with stabilizing armature highlighted by green arrows

- 3.3 There is an associated cosmetic change in switch appearance as seen in the pictures below showing a trimmed off additional terminal in the middle of the switch base. This terminal is trimmed off such that it extends no more than 0.3mm outward from the switch base after trimming.

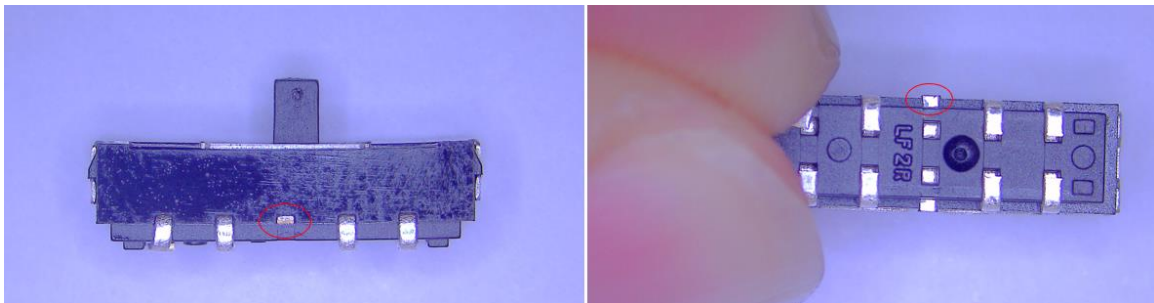


Figure 2: Horizontal and Bottom View of Switch w/ Trimmed Leadframe Armature highlighted by red circles

4. Part Numbers Affected

The following part numbers are affected by this change:

- 1. JS203011SCQN
- 2. JS203011JCQN
- 3. JS203011CQN
- 4. JS0014
- 5. JS0019
- 6. JS207011SCQNR
- 7. JS207011JCQNR

C&K

Reservoir Place, 1601 Trapelo Road Suite 178, Waltham MA 02451
Tel: +617.969.3700 ckswitches.com

Document subject to change without prior notice



5. Date of application

- Last time buy: Not applicable
- Implementation Date: Immediate
- This PCN is for information purposes for those who are presently buying this part number. It will be effective for item 1 to 5 starting from 16 December 2020, item 6 from 22 August 2021 and item 7 from 28 October 2021.

6. Conditions of Application

- Ordering: Not affected
- Pricing: Not affected
- Stock: Not affected

7. Support

Please feel free to reach out to your C&K Sales Representative with any questions you might have.

C&K

Reservoir Place, 1601 Trapelo Road Suite 178, Waltham MA 02451
Tel: +617.969.3700 ckswitches.com

Document subject to change without prior notice

PCN20-23-JS Series Slide Switch Base Material Improvement