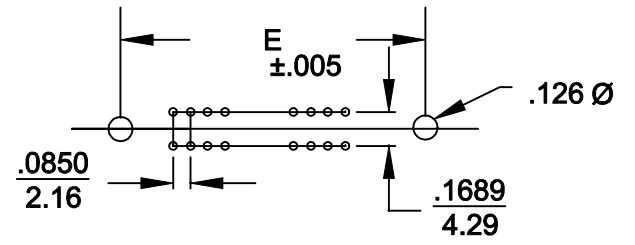
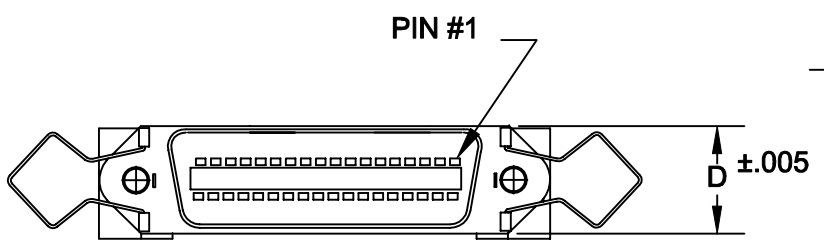
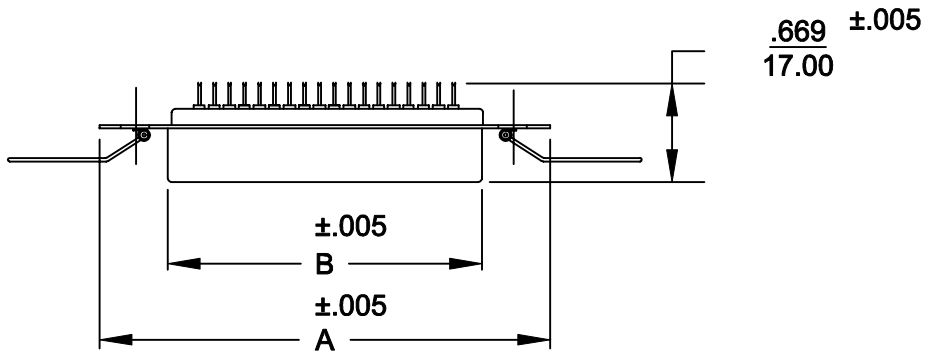


DESCRIPTION: .085" RIBBON SOLDER CUP

	A	B	C	D	E
14	1.729	.992	.476	.602	1.417
	43.92	25.20	12.10	15.30	35.99
24	2.154	1.417	.476	.602	1.842
	54.71	36.00	12.10	15.30	46.79
36	2.665	1.925	.476	.602	2.352
	67.69	48.90	12.10	15.30	59.74
50	3.259	2.538	.476	.602	2.947
	82.78	64.47	12.10	15.30	74.85



111-XXX-203-001

SERIES _____
 POSITIONS _____
 014
 024
 036
 050

GENDER _____
 2 = FEMALE

TERMINATION _____
 3 = SOLDER CUP


SHELL PLATING _____
 3 = NICKEL

HARDWARE OPTIONS _____
 00 = NO HARDWARE

PLATING OPTIONS _____
 01 = GOLD FLASH

MATERIALS:

INSULATOR: GLASS-FILLED THERMOPLASTIC
 UL RATED 94V-0
CONTACTS: COPPER ALLOY
ELECTRICALS:
CONTACT CURRENT RATING: 5 AMPS
DIELECTRIC WITHSTANDING VOLTAGE: AC 1200 R.M.S.
INSULATION RESISTANCE: 1000 mohms MINIMUM AT 500V DC
CONTACT RESISTANCE: 30 mOHMS MAXIMUM
OPERATING TEMPERATURE: -55°C TO +125°C

	THESE DRAWINGS AND SPECIFICATIONS ARE THE PROPERTY OF NorComp AND SHALL NOT BE REPRODUCED, COPIED OR USED AS THE BASIS FOR THE MANUFACTURE OF SALE OF APPARATUS WITHOUT WRITTEN PERMISSION.		DRAWN: WAYNE ROBBINS	DATE: 8-23-98
	<h1>NorComp</h1>		CHECKED: PAM JENKINS	DATE: 8-24-98
SCALE:			SHEET 1 OF 1	REV 5
DWG NO.			111-XXX-203-001	