

Light is OSRAM

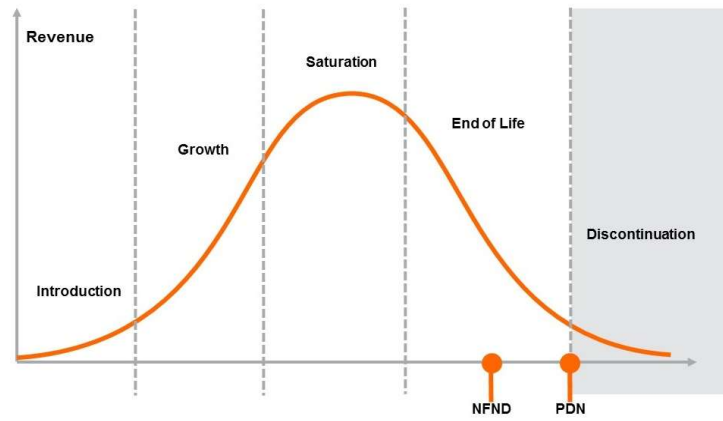
Product Or Individual Q-Code Discontinuation (acc. JEDEC J-STD-048)

04 May 2021

OS-PDN-2021-027

Last order: 01 September 2021

Last delivery: 01 December 2021



Please direct your feedback to your local Sales office.

DISCONTINUED				NEW (REPLACEMENT)		
Device	Ordering Code	Brand	Reason for discontinuation	Device	Datasheet Ordering Code	Brand
GW JELMS1.EM-GWH3-XX58-1-65-R33	Q65112A9080	DURIS E 4014	No sufficient future volume forecast	No Replacement		
GW JELMS1.EM-H1H4-XX57-1-65-R33	Q65112A9081	DURIS E 4014	No sufficient future volume forecast	No Replacement		
GW JELMS1.EM-H2H5-XX56-1-65-R33	Q65112A9082	DURIS E 4014	No sufficient future volume forecast	No Replacement		
GW JELMS1.EM-H2H6-XX55-1-65-R33	Q65112A9083	DURIS E 4014	No sufficient future volume forecast	No Replacement		
GW JELMS1.EM-H2H6-XX53-1-65-R33	Q65112A9084	DURIS E 4014	No sufficient future volume forecast	No Replacement		
GW JELMS1.EM-H2H6-XX52-1-65-R33	Q65112A9085	DURIS E 4014	No sufficient future volume forecast	No Replacement		
GW JELMS1.EM-H2H5-XX51-1-65-R33	Q65112A9086	DURIS E 4014	No sufficient future volume forecast	No Replacement		
GW JELMS2.EM-GWH4-XX58-1-65-R33	Q65112A9087	DURIS E 4014	No sufficient future volume forecast	No Replacement		
GW JELMS2.EM-H1H5-XX57-1-65-R33	Q65112A9088	DURIS E 4014	No sufficient future volume forecast	No Replacement		
GW JELMS2.EM-H2H6-XX56-1-65-R33	Q65112A9089	DURIS E 4014	No sufficient future volume forecast	No Replacement		
GW JELMS2.EM-H3H7-XX55-1-65-R33	Q65112A9090	DURIS E 4014	No sufficient future volume forecast	No Replacement		
GW JELMS2.EM-H3H7-XX53-1-65-R33	Q65112A9091	DURIS E 4014	No sufficient future volume forecast	No Replacement		
GW JELMS2.EM-H3H7-XX52-1-65-R33	Q65112A9092	DURIS E 4014	No sufficient future volume forecast	No Replacement		
GW JELMS2.EM-H3H7-XX51-1-65-R33	Q65112A9093	DURIS E 4014	No sufficient future volume forecast	No Replacement		
GW JELMS1.EM-H4H6-XX35-1-65-R33-XX	Q65113A0070	DURIS E 4014	No sufficient future volume forecast	No Replacement		
GW JELMS1.EM-H2H4-XX37-1-65-R33-XX	Q65113A1857	DURIS E 4014	No sufficient future volume forecast	No Replacement		