

## P.111 | Spherical knobs

Duroplast

METRIC

RoHS

PF

+230 °F  
-4 °F

### MATERIAL

Phenolic based (PF) Duroplast, black colour, glossy finish.

### STANDARD EXECUTION

Threaded blind hole.

## P.111+x | Spherical revolving handles

Duroplast

METRIC

RoHS

PF

+230 °F  
-4 °F

### MATERIAL

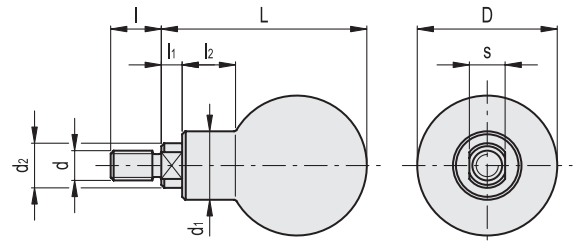
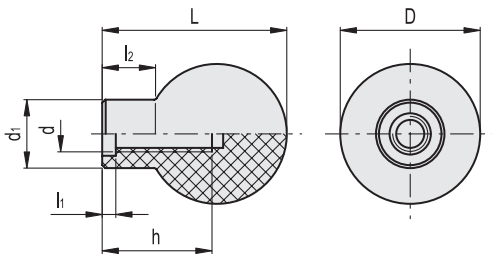
Phenolic based (PF) Duroplast, black colour, glossy finish.

### STANDARD EXECUTION

Zinc-plated steel threaded pin, two flat faces for fitting with 12 mm spanner.



Conversion Table	
1 mm = 0.039 inch	
D	
mm	inch
37	1.46
47	1.85



METRIC

METRIC

Code	Description	D	L	d	d1	h	l1	l2	Δ
45971	P.111/37-M8	37	47	M8	18	16	4	13	38
45991	P.111/47-M10	47	62	M10	23	26	5	17	80

Code	Description	D	L	dg	d1	d2	l	l1	l2	s	Δ
45981	P.111/37+x-M8	37	54	M8	18	15	15	7	13	12	55
46011	P.111/47+x-M10	47	69	M10	23	15	17	7	17	12	130