

ITEM	PART#	DESCRIPTION	QTY	UOM
A	1726722002	Super-Sabre Rcpt Hsg V-0 2ckt	1	PC
B	1718250100	Super-Sabre Female Crimp Tml	2	PC
C	--	PAPER PRINTED PAPER WHITE	1	PC

FROM	TO	DESCRIPTION	COLOR
A1	--	1X10AWG DISC MPPE BK UL11028 HOOKUP	BLACK
A2	--	1X10AWG DISC MPPE BK UL11028 HOOKUP	BLACK

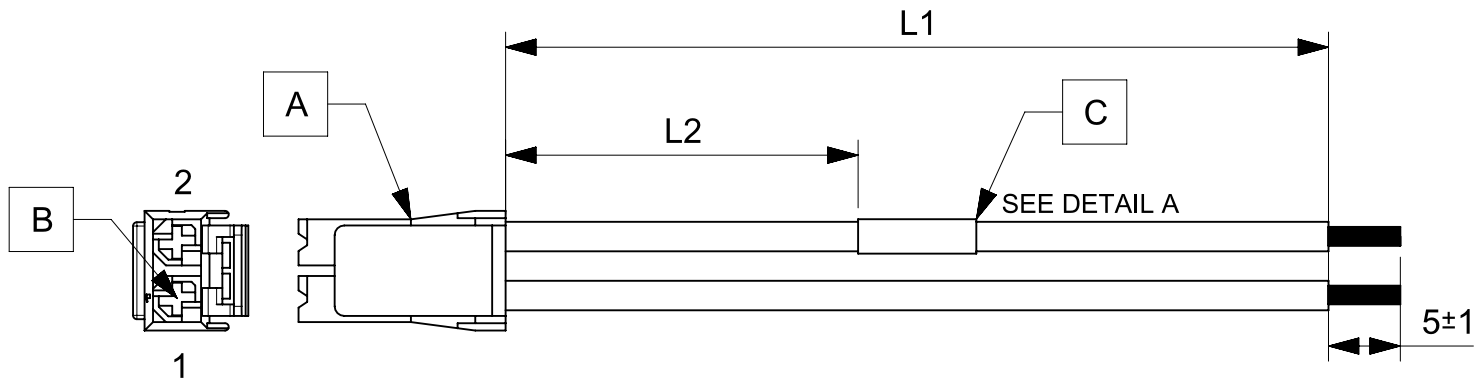


TABLE			
PART NUMBER	L1	L2	TITLE
2160111021	150±8	63 REF	SUPER SABRE R-S 150MM 2CKT Sn
2160111022	300±10	138 REF	SUPER SABRE R-S 300MM 2CKT Sn
2160111023	600±10	288 REF	SUPER SABRE R-S 600MM 2CKT Sn

NOTES

1. Connector view shown is from mating side.
2. Free ends must be stripped, twisted & tinned. The length of tinning is 5±1mm. Tinning dia must be 4mm Max.
3. Label text must be 2mm max. in height with Arial font.
4. Label must be wrapped on a single cable.

MOLEX P/N
MOLEX
BATCH WK/YR
DETAIL A

REVISION			
DATE	REV	DESCRIPTION	CHANGER
2020/04/07	A	INITIAL RELEASE	ARAJU

FUNCTIONAL SYMBOLS $\frac{E}{A} = 0$ $\frac{E}{E} = 0$ $\frac{E}{P} = 0$ DIVISIONAL SYMBOLS	THIS DRAWING CONTAINS INFORMATION THAT IS PROPRIETARY TO MOLEX ELECTRONIC TECHNOLOGIES, LLC AND SHOULD NOT BE USED WITHOUT WRITTEN PERMISSION		CURRENT REV DESC:		
	DIMENSION UNITS	SCALE	EC NO: 644416		
	mm	NTS	DRWN: ARAJU 2020/04/07		
	GENERAL TOLERANCES (UNLESS SPECIFIED)		CHK'D: RDESAI01 2020/09/01		
ANGULAR TOL ± °		APPR: RDESAI01 2020/09/01		PRODUCT CUSTOMER DRAWING	
4 PLACES ±		INITIAL REVISION:		DOCUMENT NUMBER	
3 PLACES ±		DRWN: ARAJU 2020/04/07		2160111021	
2 PLACES ±		APPR: RDESAI01 2020/09/01		DOC TYPE DOC PART REVISION	
1 PLACE ±		DRAFT WHERE APPLICABLE MUST REMAIN WITHIN DIMENSIONS		PSD 000 A	
0 PLACES ±		THIRD ANGLE PROJECTION	DRAWING	SERIES	MATERIAL NUMBER
			A4-SIZE	216011	SEE TABLE
					CUSTOMER
					GENERAL MARKET
					SHEET NUMBER
					1 OF 1