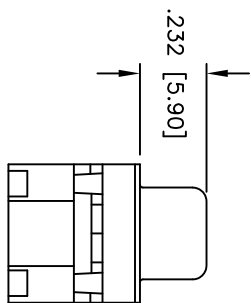
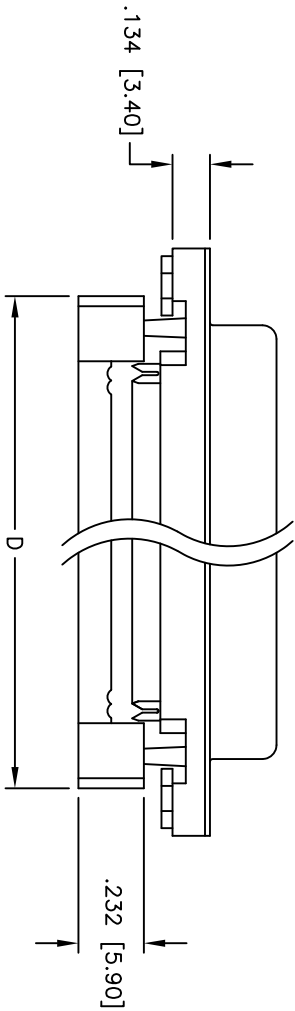
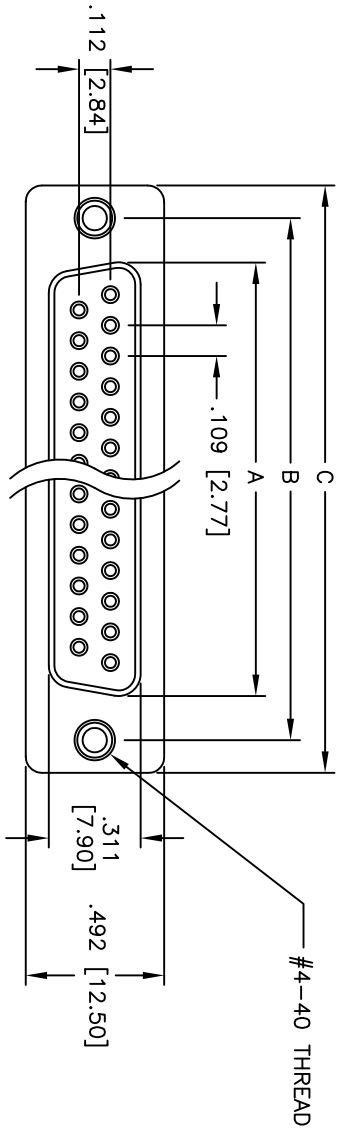


Rev	AWO #	Description	Date	Appr
-		RELEASED	4/25/05	

APPROVED: \_\_\_\_\_  
 DATE: \_\_\_\_\_ TITLE: \_\_\_\_\_



DXXX	NO. OF CONTACTS	DIMENSIONS			
		A	B	C	D
DE09	9	.643 [16.33]	.984 [24.99]	1.213 [30.81]	.883 [22.44]
DA15	15	.971 [24.66]	1.312 [33.32]	1.541 [39.14]	1.213 [30.81]
DB25	25	1.511 [38.38]	1.852 [47.04]	2.088 [53.04]	1.755 [44.57]
DC37	37	2.159 [54.84]	2.500 [63.50]	2.729 [69.32]	2.414 [61.32]

**SPECIFICATIONS:**

**Material:**  
 Insulator: PBT, glass reinforced, rated UL 94V-0  
 Insulator color: Black  
 Contacts: Phosphor Bronze  
 Shell: Steel, Tin plated  
 Hardware: Brass, Nickel plated  
 Plating:  
 Gold flash over Nickel underplate,  
 Tin over Copper underplate on IDC area

**Electrical:**  
 Operating voltage: 250 VAC max  
 Current rating: 5 Amps max  
 Contact resistance: 20 mohms max  
 Insulation resistance: 5,000 Mohms min  
 Dielectric withstanding voltage: 1,000 VAC for 1 minute

**Mechanical:**  
 Recommended cable size: 28-30 AWG  
 Operating temperature: -65°C to +125°C  
 Environmental:  
 Lead free, RoHS compliant

**ADAM TECH**

909 Railway Avenue, Union, NJ 07083  
 Phone: 908-687-5000 Fax: 908-687-5710

TITLE: IDC FLAT CABLE D-SUB SOCKET  
 METAL SHELL, #4-40 THREADED INSERTS

UNLESS OTHERWISE SPECIFIED ALL DIMENSIONS ARE INCHES [MM]		TOLERANCES: EXCEPT AS NOTED INCHES		HOLDS		DATE	
.X	± .10	Ø.X	± .10		± .10		
.XX	± .020	Ø.XX	± .015		± .015		
.XXX	± .015	Ø.XXX	± .010		± .010		
APPROVALS		DATE		TITLE		REV.	
DRAWN	SS	4/25/05		SIZE		PART NO.	
CHECKED				X		DXXX-SF-M2	
APPROVED				REF:		SCALE: NTS	
				SHEET 1 OF 1			

A

B

C

D

A

B

C

D

6

5

4

3

2

1