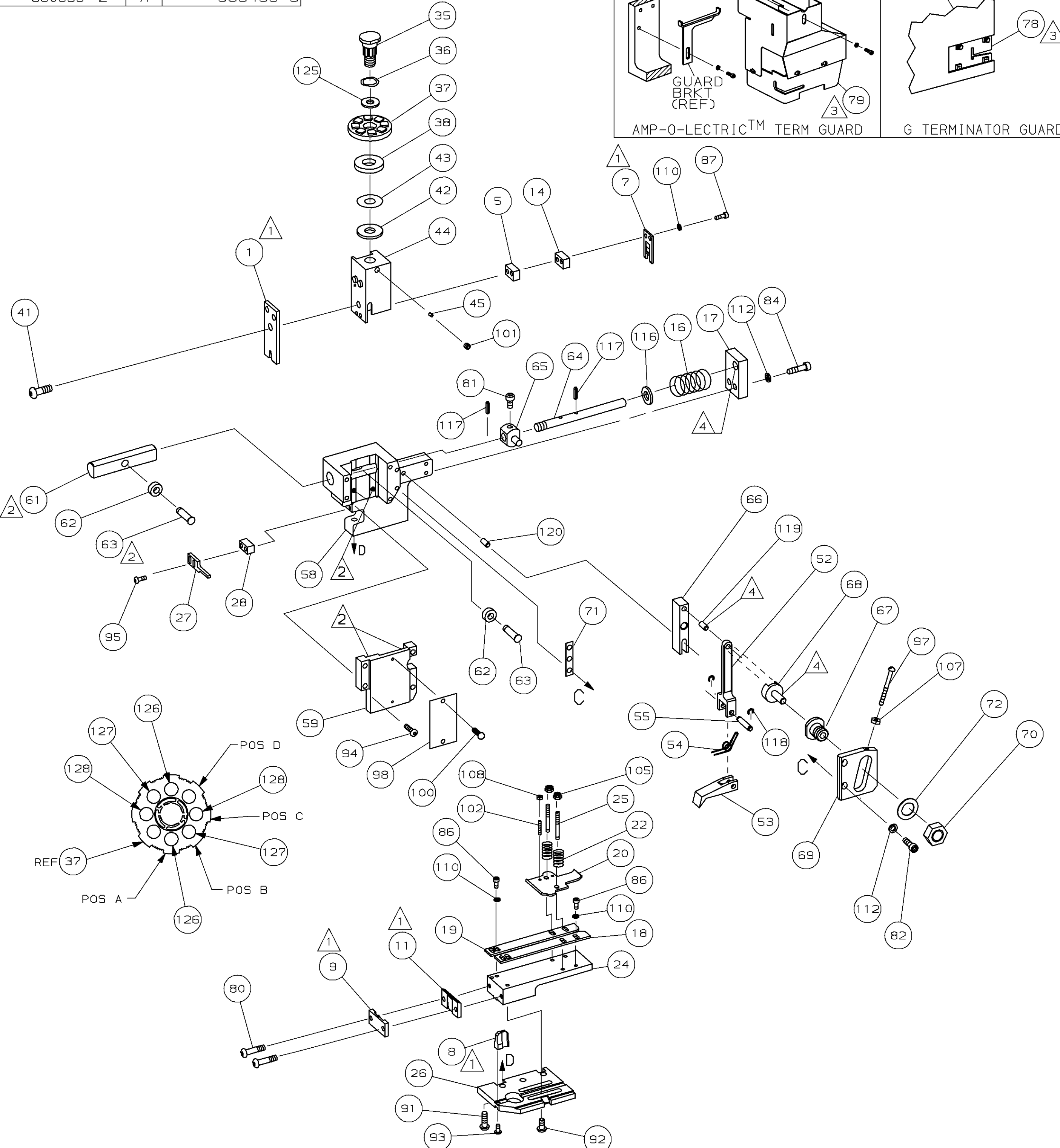
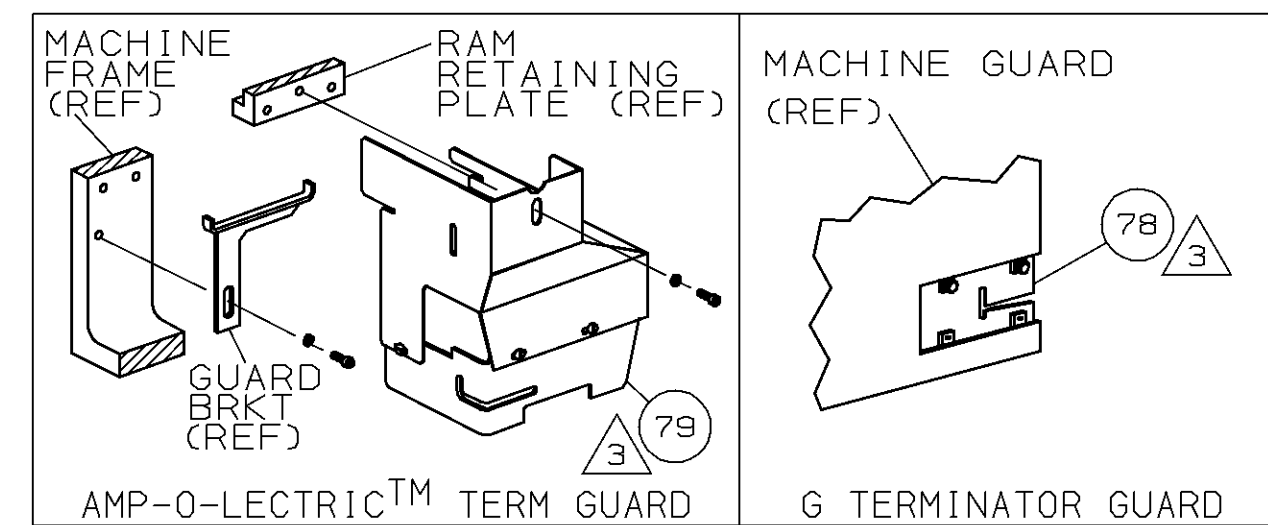
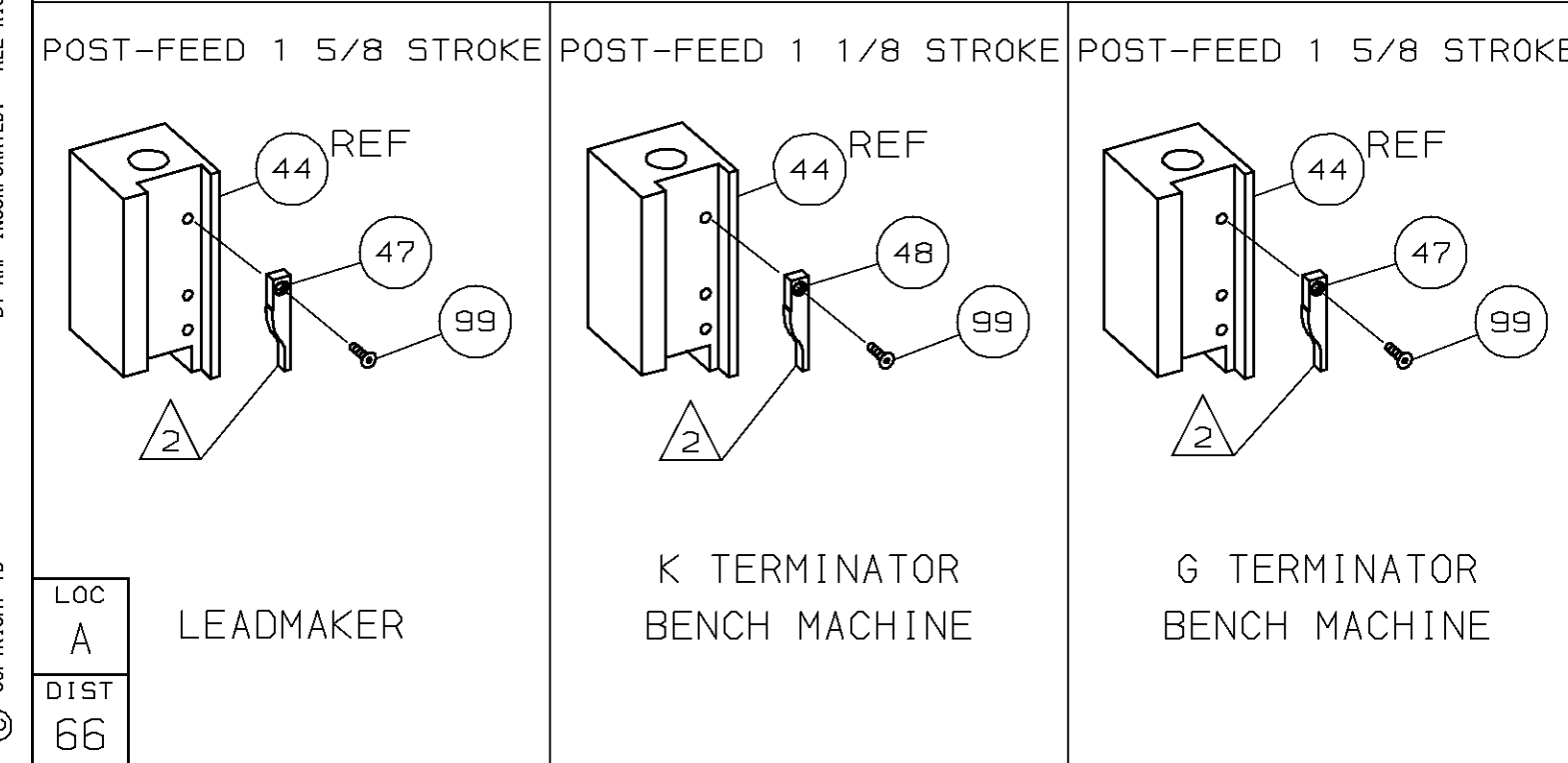


PART NUMBER	REV	FIRST USED
680595-1	A	122500-1
680595-2	A	565435-5



TERMINAL NAME: TERMINAL, RING			
PAD LTR	CRIMP HEIGHT	WIRE SIZE	
A	.118 ±.002 [2.99 ±0.05mm]	(2) 13.5	
B	.115 ±.002 [2.92 ±0.05mm]	(2) 14	
C	.112 ±.002 [2.84 ±0.05mm]	(2) 14.5	
D	NOT USED		
CRIMP	SIZE	TYPE	RANGE
WIRE	.180	F	(2) 14.5-(2) 13.5
INSUL	-	-	-

REV	BY	DATE	DESCRIPTION	ITEM NO
-1			LEADMAKER & BENCH MODEL G	
-2			BENCH MODEL K	
REF	REF	-	A 22594-8	NUT, HEX 70
REF	REF	-	B 240628-1	PLATE, ADJ 69
REF	REF	-	B 240626-1	SHAFT, PIVOT 68
REF	REF	-	B 240633-1	BUSHING 67
REF	REF	-	A 455680-1	LEVER, INTERMEDIATE 66
REF	REF	-	B 240629-1	BLOCK, PIVOT 65
REF	REF	-	A 240632-2	SCR, ADJ 64
REF	REF	-	B 240659-3	PIN, CAM ROLLER 63
REF	REF	-	B 240658-1	CAM, ROLLER 62
REF	REF	-	B 454398-1	ROD, FEED 61
REF	REF	-	C 454220-1	CAP, RAM 60
REF	REF	-	D 453736-1	HOUSING 59
REF	REF	-	B 240624-1	PIN, FEED FINGER 55
REF	REF	-	B 691499-1	SPRING, FEED FINGER 54
REF	REF	-	B 240635-1	FINGER, FEED 53
REF	REF	-	B 240634-1	LEVER, TERMINAL 52
REF	REF	-	C 454220-1	CAP, RAM 59
REF	REF	-	D 453736-1	HOUSING 58
REF	REF	-	B 690501-3	CAM, POST FEED 1 1/8 ST 48
REF	REF	-	B 690501-4	CAM, POST-FEED 1 5/8 ST 47
REF	REF	-	A 690191-1	PLUG, NYLON 45
REF	REF	-	C 455674-1	RAM 44
REF	REF	-	A 690125-1	WASHER, LAMINATED 43
REF	REF	-	A 690124-9	WASHER, RAM 42
REF	REF	-	A 7-21002-9	BOLT, CRIMPER (5/16-24x1.00) 41
REF	REF	-	A 690223-2	SPACER, INSULATION DISC 38
REF	REF	-	D 354777-1	WIRE DISC, PLASTIC 37
REF	REF	-	A 22480-5	WASHER, SPRING 36
REF	REF	-	B 690212-1	POST, RAM 35
REF	REF	-	D 458980-1	APPLICATOR, BASIC (SUB ASSY) 32
REF	REF	-	B 3-690451-2	SPACER, STRIPPER 28
REF	REF	-	A 240639-1	STRIPPER 27
REF	REF	-	C 455676-1	PLATE, BASE 26
REF	REF	-	A 22354-8	DRAG, STUD 25
REF	REF	-	B 455678-1	PLATE, STRIP GUIDE 24
REF	REF	-	A 4-22281-1	SPRING, DRAG 22
REF	REF	-	A 454177-1	DRAG, STOCK 20
REF	REF	-	C 1-458030-4	GUIDE, STRIP (REAR) 19
REF	REF	-	C 1-458031-4	GUIDE, STRIP (FRONT) 18
REF	REF	-	A 454178-1	GUIDE, FEED ROD 17
REF	REF	-	A 4-22284-9	SPRING, FEED RETURN 16
REF	REF	-	C 3-240641-0	SPACER, SLUG BLADE 14
REF	REF	-	B 240644-1	PLATE, REAR SHEAR 11
REF	REF	-	B 690482-4	PLATE, FRONT SHEAR 9
REF	REF	-	D 5-240654-8	ANVIL 8
REF	REF	-	B 1-690474-7	BLADE, SLUG 7
REF	REF	-	C 2-240641-9	SPACER, SLUG BLADE 5
REF	REF	-	C 456430-1	CRIMPER, WIRE 1



- 1 RECOMMENDED SPARE PARTS.
- 2 GREASE LIGHTLY.
- 3 GUARD MUST BE IN PLACE WHEN OPERATING APPLICATOR IN A BENCH MACHINE.
- 4 LUBRICATE DAILY USING NO. 20 MACHINE OIL.
- 5. ITEMS WITH QTY OF REF SPECIFIED (EXCEPT ITEMS 78 AND 79) ARE USED ON ITEM 32.
- 6 ITEM 78 USED WITH G TERMINATOR ONLY.

QTY REQD PER ASSY	REV	BY	DATE	DESCRIPTION	ITEM NO
2	2	-	C	3-354778-5	PIN, WIRE DISC(.2670)C 129
2	2	-	C	2-354778-7	PIN, WIRE DISC(.2630)B 127
2	2	-	C	2-354778-1	PIN, WIRE DISC(.2600)A 126
1	1	-	A	986950-1	WASHER, FLAT PRECISION 125
1	1	-	A	217238-1	GENERAL INSTRUCTION PACKAGE 124
1	1	-	-	4088039	EF APPL INST 408-8039 123
REF	REF	-	A	1-21030-7	PIN, DOWEL (Ø.187x1.50)HSG 120
REF	REF	-	A	1-21030-1	PIN, DOWEL (Ø.187x.50)LEVER 119
REF	REF	-	A	21045-3	RING, RET "C" (Ø.187)FD PIN 118
REF	REF	-	A	5-21028-1	PIN, STD SPRING (Ø.12)FD ADJ ROD 117
REF	REF	-	A	21899-4	WASHER, FLAT (Ø5/16) SCR ADJ 116
REF	REF	-	A	21024-5	WASHER, LOCK (NO.10)FD ROD GDE 112
6	6	-	A	21024-4	WASHER, LOCK (NO.8) SHEAR BL 110
2	2	-	A	21018-4	NUT, HEX (4-40) DRAG 108
REF	REF	-	A	21018-5	NUT, HEX (6-32)FD ADJ PL 107
2	2	-	A	21022-2	NUT, HEX SL (8-32)DRAG STUD 105
2	2	-	A	2-21006-6	SCR, SKT SET (4-40x.62)DRAG 102
1	1	-	A	21009-2	SCR, SKT SET (1/4-20x.25)RAM 101
2	2	-	A	21017-2	SCR, DRIVE (#2x.19) ID PLATE 100
1	1	-	A	1-21002-7	SCR, BHC (6-32x.38) CAM 99
1	1	-	B	461264-1	PLATE, IDENTIFICATION 98
REF	REF	-	A	6-23715-5	SCR, PAN HD (6-32x1.50)FEED ADJ 97
2	2	-	A	2-21002-2	SCR, BHC (8-32x.50) STRIPPER 95
REF	REF	-	A	2-21002-9	SCR, BHC (10-32x.75)HSG CAP 94
1	1	-	A	22733-8	SCR, BHC (8-32x.38 LW) ANVIL 93
4	4	-	A	3-21002-3	SCR, BHC (1/4-20x.50) ST GD PL 92
REF	REF	-	A	2-22733-8	SCR, BHC (1/4-20x.62)BASE PL 91
REF	REF	-	A	3-21000-7	SCR, SHC (10-32x.75)FEED ROD GDE 84
REF	REF	-	A	3-21000-6	SCR, SHC (10-32x.62)FEED ADJ PL 82
REF	REF	-	A	3-21000-4	SCR, SHC (10-32x.38)PIVOT BLOCK 81
2	2	-	A	3-21002-0	SCR, BHC (10-32x.88) SHEAR PL 80
REF	REF	-	A	455745-1	GUARD, WINDOW 79
REF	REF	-	A	679532-1	INSERT, GUARD 78
REF	REF	-	A	458109-1	WASHER, FLAT (SPECIAL) 72
REF	REF	-	A	690517-1	SPACER 71

QTY REQD PER ASSY	REV	BY	DATE	DESCRIPTION	ITEM NO	
-2	-1	U/M	DWG SIZE	PART NO	DESCRIPTION	ITEM NO

DIMENSIONS IN INCHES. DO NOT SCALE PRINT. TOLERANCES UNLESS OTHERWISE SPECIFIED.

DR L. COLLINS 11MAR98 APP T. ELBIN 11MAR98

CHK C. ERISMAN 11MAR98 REL -

NAME END FEED HDM APPLICATOR MACHINE REF MINI APPL

SCALE 1 OF 1 SHEET REV A

REMOVE BURRS, BREAK SHARP EDGES R.015 MAX

CUSTOMER AND ASSEMBLY DRAWING

THIS DRAWING IS A CONTROLLED DOCUMENT.

APRIL 27, 1998

RELEASED FOR PUBLICATION BY AMP INCORPORATED. ALL RIGHTS RESERVED.

THIS DRAWING IS UNPUBLISHED. COPYRIGHT 1998