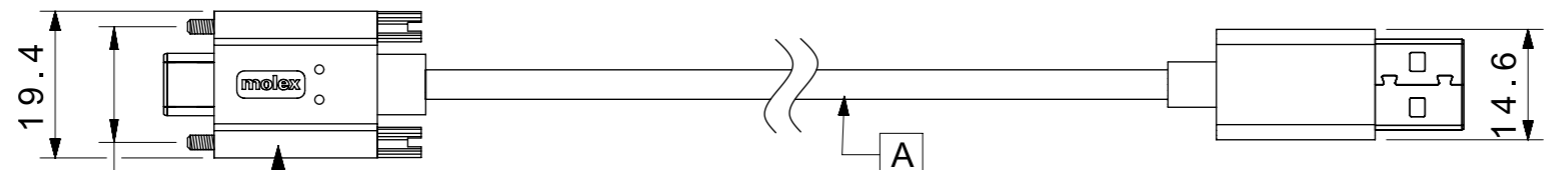
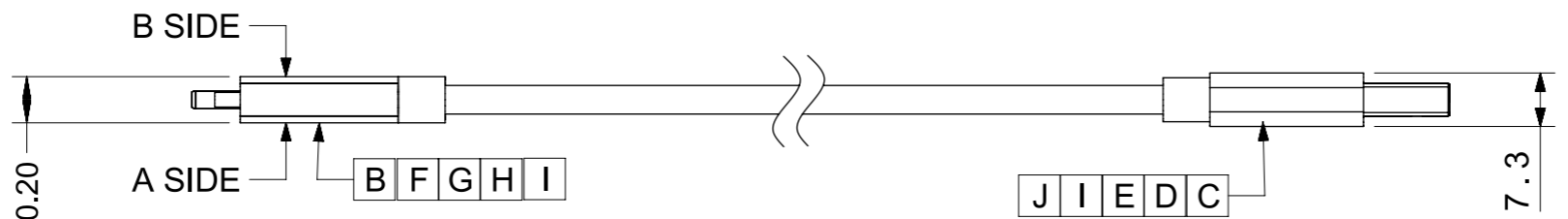
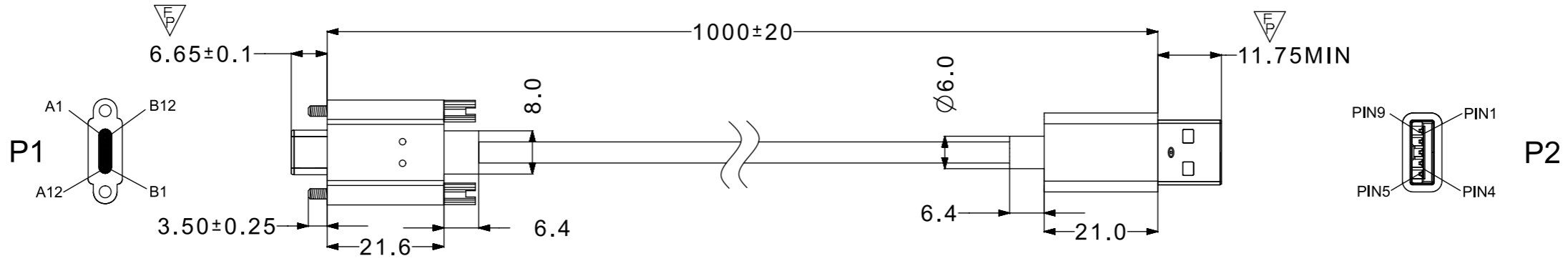
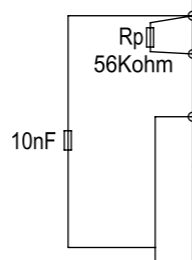


REVISIONS				
EC NO	DATE	REV	DESCRIPTION	CHANGER
NA	2018/08/03	A	INITIAL RELEASE	LUCY
622164	2019/08/09	B	CHANGE RESIN, ADD TOTAL PHASE TEST	LUCY



LOGO CAN BE PLACED IN ANY ONE SIDE (A SIDE OR B SIDE)

PIN ASSIGNMENTS					
Type C	SIGNAL NAME	WIRE COLOR	USB 3.0 A	SIGNAL NAME	
A4,B4,A9,B9	VBUS	RED	1	VBUS	
A5	CC	-	-	-	
B5	Vconn	-	-	-	
A1,B1,A12,B12	GND	DRAIN	4	GND	
A6	Dp1	GREEN	3	D+	
A7	Dn1	WHITE	2	D-	
A2	SSTXp1	YELLOW	6	StdA_SSRX+	
A3	SSTXn1	BLUE	5	StdA_SSRX-	
A1,A12	GND	DRAIN	7	GND_DRAIN	
B12,B1	GND	DRAIN			
B11	SSRXp1	PURPLE	9	StdA_SSTX+	
B10	SSRXn1	ORANGE	8	StdA_SSTX-	
SHELL	SHIELD	BRAID	SHELL	SHIELD	



ITEM	DESCRIPTION	QTY.
J	TPE RESIN	A/R
I	PE RESIN	A/R
H	TPE RESIN	A/R
G	M2 SCREW	2
F	METAL SHELL FOR TYPE C PLUG	1
E	Front metal shell for USB3.0 A/MALE	1
D	USB A Male 3.0 with AU 30u"	1
C	Rear Metal for USB 3.0 A/Male	1
B	PCBA WITH Type C PLUG	1
A	3PX32+1CX24AWG;SHLD;TPE;BK;3.9MM;UL21104	AR

- NOTE:
- APPLICATION CONDITION
    - 1.1 WORKING TEMPERATURE: -10°C--- +50°C
    - 1.2 STORAGE TEMPERATURE: -20°C--- +60°C
  - MECHANICAL PERFORMACNE
    - 2.1. CABLE ASSEMBLY CAN PASS FLEXING TEST, PER EIA364-41 CONDITION I WITH DIMENSION X=3.7 TIMES THE CABLE DIAMETER AND 100 CYCLES IN EACH OF TWO PLANES 120 DEGREE ARC.
    - 2.2. CABLE SHOULD WITHSTAND A PULL FORCE 40N FOR ONE MINUTE WITHOUT VISIBLE TERMINATION DAMAGE.PER EIA 364-38 METHOD A
  - ELECTRICAL PERFORMACNE
    - 3.1 100% OPEN AND SHORT TEST
    - 3.2 CURRENT RATING:3A, VOLTAGE DROP SHALL BE 250mV FOR GND AND 500mV FOR VBUS.
  - THIS PRODUCT MUST MEET RoHS 2.0

SYMBOLS	THIS DRAWING CONTAINS INFORMATION THAT IS PROPRIETARY TO MOLEX ELECTRONIC TECHNOLOGIES, LLC AND SHOULD NOT BE USED WITHOUT WRITTEN PERMISSION	CURRENT REV DESC:		<b>molex</b>
	DIMENSION UNITS: mm SCALE: 1:1 GENERAL TOLERANCES (UNLESS SPECIFIED): ANGULAR TOL ± ° 4 PLACES ± 3 PLACES ± 2 PLACES ± 0.25 1 PLACE ± 0.5 0 PLACES ± DRAFT WHERE APPLICABLE MUST REMAIN WITHIN DIMENSIONS	EC NO: DRWN: ZZXIAN 2019/08/08 CHK'D: LLI205 2019/08/13 APPR: INITIAL REVISION: DRWN: LLI205 2018/04/03 APPR: LHUI 2018/09/05		
		DOCUMENT NUMBER: 2038000026 DOC TYPE: PSD DOC PART: 000 REVISION: B		
		THIRD ANGLE PROJECTION: A3-SIZE DRAWING: 203800 SERIES: 203800 MATERIAL NUMBER: 2038000026 CUSTOMER:		SHEET NUMBER: 1 OF 1

DOCUMENT STATUS	RV	RELEASE DATE	
-----------------	----	--------------	--