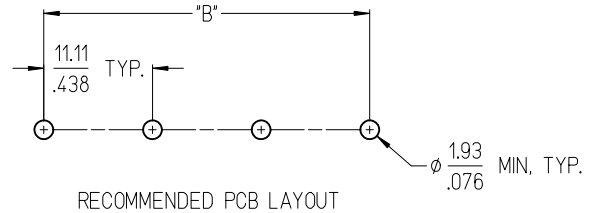


QTY CKTS	DIM "A"		DIM "B" (B)		MATERIAL NO. -A-C OPT	MATERIAL NO. -A-C-50 OPT
	MM	INCH	±0.25 MM	±.010 INCH		
2	24.5	0.97	11.11	0.438	387319802	387320002
3	35.7	1.40	22.23	0.875	387319803	387320003
4	46.8	1.84	33.34	1.313	387319804	387320004
5	57.9	2.28	44.45	1.750	387319805	387320005
6	69.0	2.72	55.56	2.188	387319806	387320006
7	80.1	3.15	66.68	2.625	387319807	387320007
8	91.2	3.59	77.79	3.063	387319808	387320008
9	102.3	4.03	88.90	3.500	387319809	387320009
10	113.4	4.47	100.01	3.938	387319810	387320010
11	124.6	4.90	111.13	4.375	387319811	387320011
12	135.7	5.34	122.24	4.813	387319812	387320012
13	146.8	5.78	133.35	5.250	387319813	387320013
14	157.9	6.22	144.46	5.688	387319814	387320014
15	169.0	6.65	155.58	6.125	387319815	387320015
16	180.1	7.09	166.69	6.563	387319816	387320016
17	191.2	7.53	177.80	7.000	387319817	387320017
18	202.3	7.97	188.91	7.438	387319818	387320018
19	213.5	8.40	200.03	7.875	387319819	387320019
20	224.6	8.84	211.14	8.313	387319820	387320020
21	235.7	9.28	222.25	8.750	387319821	387320021
22	246.8	9.72	233.36	9.188	387319822	387320022
23	257.9	10.15	244.48	9.625	387319823	387320023
24	269.0	10.59	255.59	10.063	387319824	387320024
25	280.1	11.03	266.70	10.500	387319825	387320025
26	291.2	11.47	277.81	10.938	387319826	387320026
27	302.4	11.90	288.93	11.375	387319827	387320027
28	313.5	12.34	300.04	11.813	387319828	387320028
29	324.6	12.78	311.15	12.250	387319829	387320029



- NOTES:
1. MATERIAL: SEE DETAILS
  2. FINISHES: SEE DETAILS
  3. PRODUCT SPECIFICATION: NOT REQUIRED
  4. "XX" REFERS TO THE NUMBER OF CIRCUITS
  5. ROHS COMPLIANT

ITEM	QTY.	DESCRIPTION	MATERIAL	FINISH
4	XX	#8-32 SCREW (OPT -A)	BRASS	NICKEL PLATE
3	XX	#8-32 SCREW W/WASH (OPT -A,-50)	STEEL	ZN, CLEAR CHROMATE
2	XX	TERMINAL, PC 8-32	BRASS	TIN PLATE
1	1	INSULATOR, SR, NO MTG	POLYESTER (PBT)	BLACK

UPDATE TOLERANCE  
 EC NO: WNA2010-0528  
 DRAWN: JENC INAS 2010/03/10  
 CHYKDR: DEROSS 2006/03/27  
 APPR: JMACNEIL 2010/03/17

QUALITY SYMBOLS  
 ▽=0  
 ▽=0

GENERAL TOLERANCES (UNLESS SPECIFIED)

	mm	INCH
4 PLACES	± ---	± ---
3 PLACES	± ---	± .005
2 PLACES	± 0.13	± .01
1 PLACE	± 0.3	± ---

ANGULAR ± 2 °

DRAFT WHERE APPLICABLE MUST REMAIN WITHIN DIMENSIONS

DIMENSION STYLE  
**MM/IN**

SCALE  
**2:1**

DESIGN UNITS  
**INCH**

THIRD ANGLE PROJECTION

DRAWN BY  
 C. YORK

DATE  
 2006/03/27

CHECKED BY  
 R. DEROSS

DATE  
 2006/03/27

APPROVED BY  
 JMACNEIL

DATE  
 2010/03/17

MATERIAL NO.  
**SEE CHART**

TITLE  
**11,11 [.438] SR BTS ASY, PC TERMINAL, NO MTG, OVERSIZED SCREW, -A-C**

**MOLEX INCORPORATED**

DOCUMENT NO.  
**SD-38731-005**

SHEET NO.  
**1 OF 1**

THIS DRAWING CONTAINS INFORMATION THAT IS PROPRIETARY TO MOLEX INCORPORATED AND SHOULD NOT BE USED WITHOUT WRITTEN PERMISSION