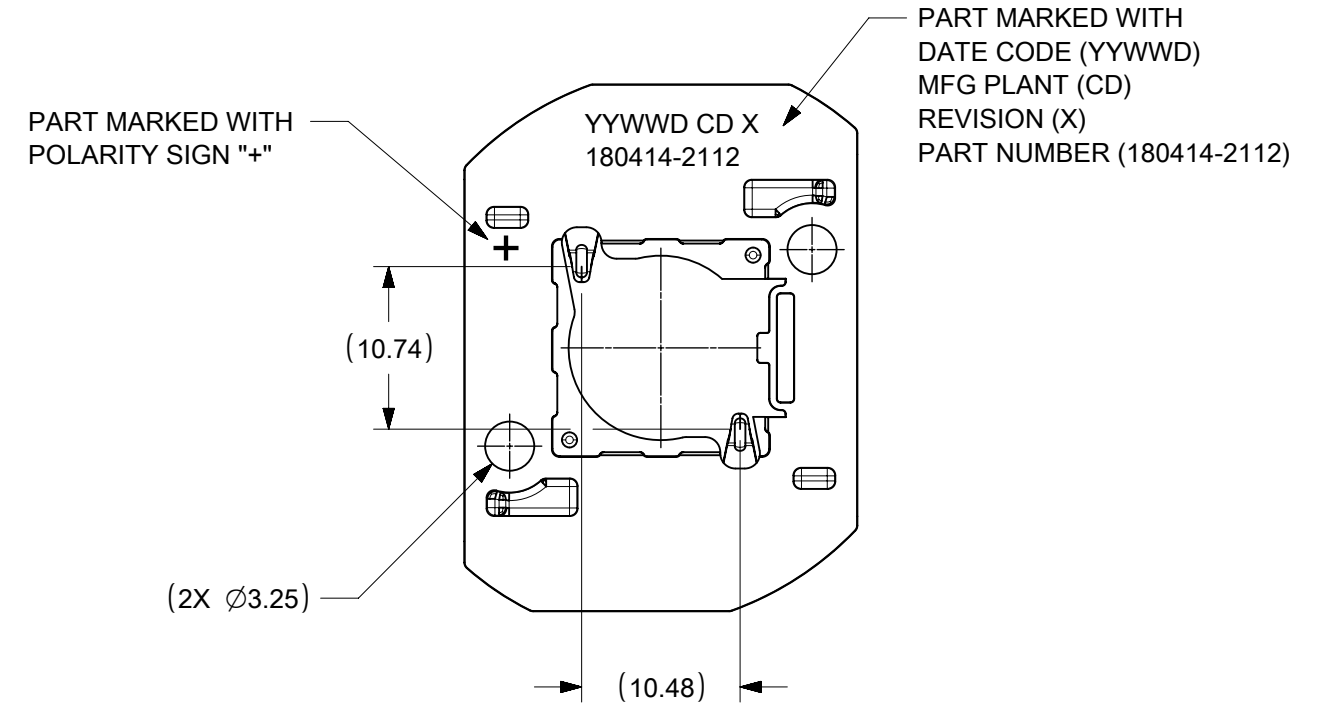
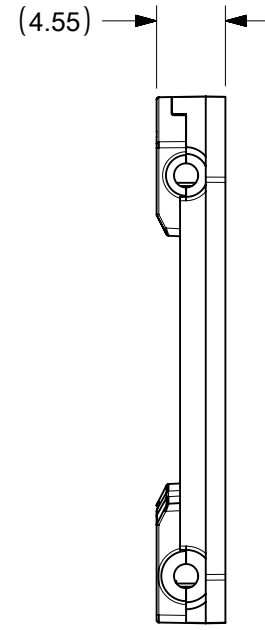
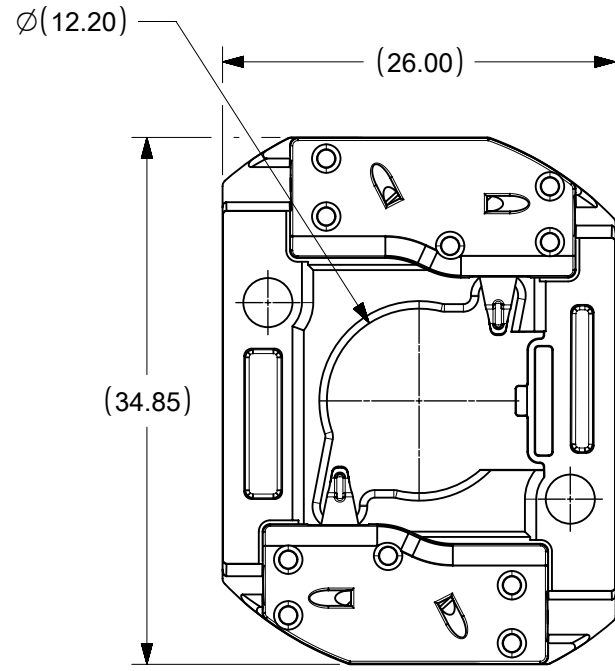


10	9	8	7	6	5	4	3	2	1
PART NUMBER	DESCRIPTION	POCKET DEPTH	HOUSING	TERMINAL	CAP				
180414-2112	COB LED HOLDER ASSEMBLY	0.75	180413-2112	180155-0133	180154-0105				

### P/N 180414-2112 HOLDER ASSEMBLY (0.75 POCKET DEPTH)



**NOTES:**

1. MATERIALS: HOUSING AND CAPS: POLYESTER PBT GLASS FILLED; COLOR: WHITE; TERMINAL: COPPER ALLOY
2. FINISHES: TERMINAL CONTACT: SELECT GOLD OVER NICKEL WIRE TRAP: SELECT TIN OVER NICKEL
3. PRODUCT SPECIFICATION: 180414-0000-PS
4. PACKAGING SPECIFICATION: PK-180419-005
5. UL:OLFB2 UL496 FILE NO. E345583
6. ELV AND ROHS COMPLIANT
7. FOR USE WITH: 13.5 MM X 13.5 MM COB LED
8. WIRE GAUGE: 18, 20, AND 22 AWG, SOLID OR STRANDED WITH TIN OVERCOAT. STRIP LENGTH 10MM +2.0/-0.0MM.
9. ALL DIMENSIONS IN PARENTHESES (XX.XX) ARE FOR REFERENCE ONLY

THIS DRAWING CONTAINS INFORMATION THAT IS PROPRIETARY TO MOLEX ELECTRONIC TECHNOLOGIES, LLC AND SHOULD NOT BE USED WITHOUT WRITTEN PERMISSION									
DIMENSION UNITS		SCALE		CURRENT REV DESC:				<b>molex</b>	
mm		2:1		EC NO: 624787					
GENERAL TOLERANCES (UNLESS SPECIFIED)				DRWN: VLOKESHA		2019/06/13		COB LED HOLDER ASSEMBLY	
4 PLACES		±		CHK'D: GGA		2019/11/11		13.5 MM X 13.5 MM SQUARE	
3 PLACES		±		APPR: GGA		2019/11/11		PRODUCT CUSTOMER DRAWING	
2 PLACES		± 0.13		INITIAL REVISION:				DOCUMENT NUMBER	
1 PLACE		± 0.25		DRWN: MCOLE		2013/12/09		SD-180414-112	
0 PLACES		±		APPR: DMCGOWAN		2013/12/09		PSD 001 C5	
ANGULAR TOL ± 0.5°				THIRD ANGLE PROJECTION		DRAWING		SERIES	
DRAFT WHERE APPLICABLE MUST REMAIN WITHIN DIMENSIONS				B-SIZE		180414		MATERIAL NUMBER	
				SEE CHART		CUSTOMER		GENERAL MARKET	
								SHEET NUMBER	
								1 OF 3	

DOCUMENT STATUS	P1	RELEASE DATE	2019/11/11	02:36:40
-----------------	----	--------------	------------	----------

F

F

E

E

D

D

C

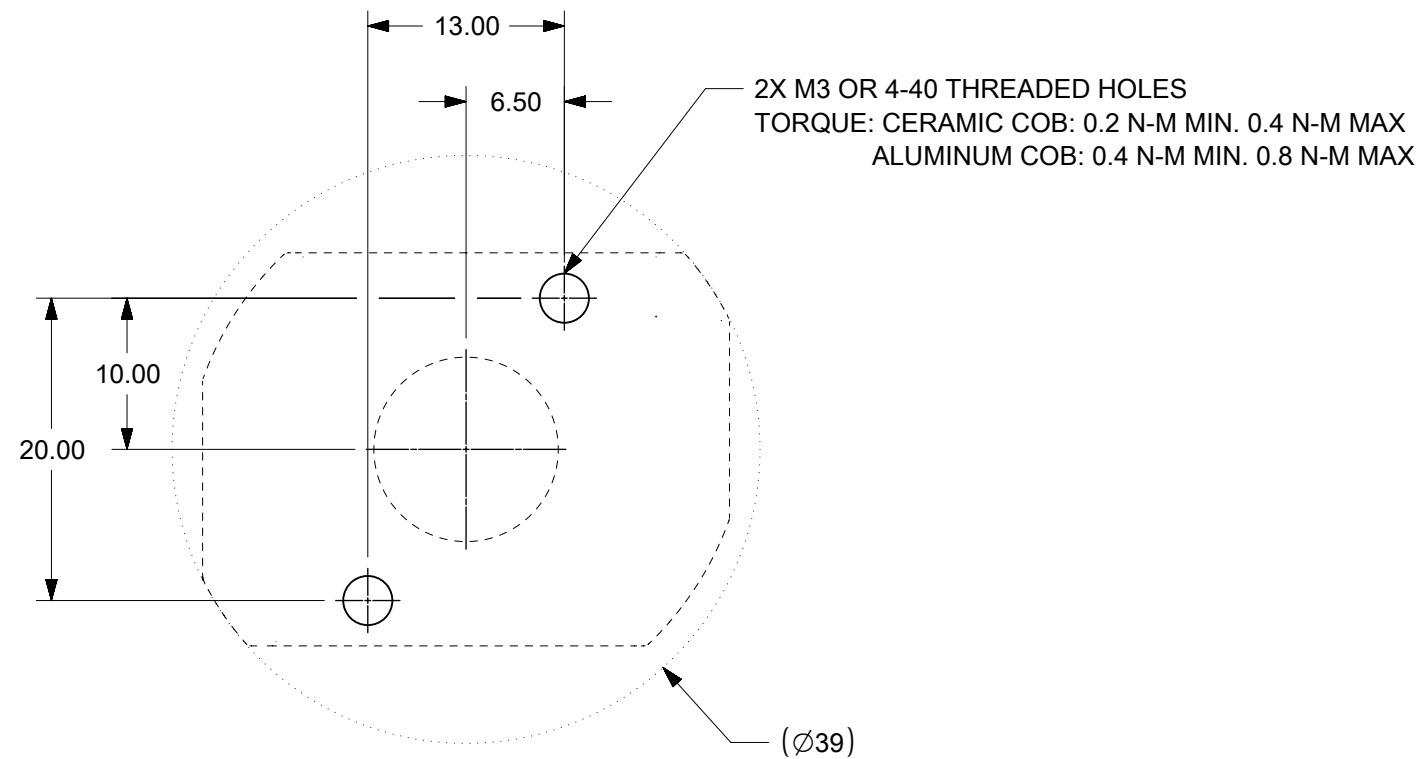
C

B

B

A

A

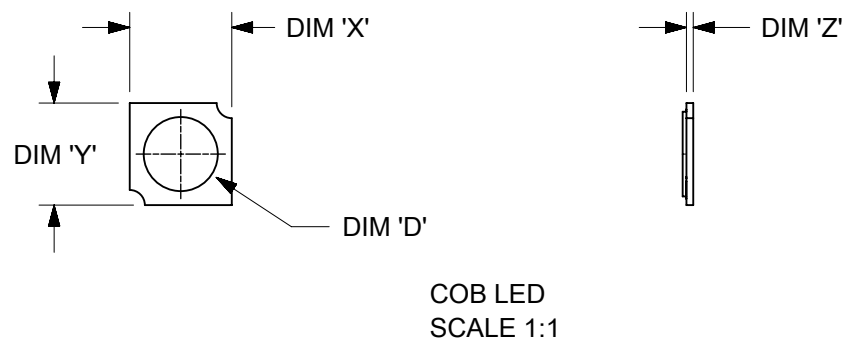
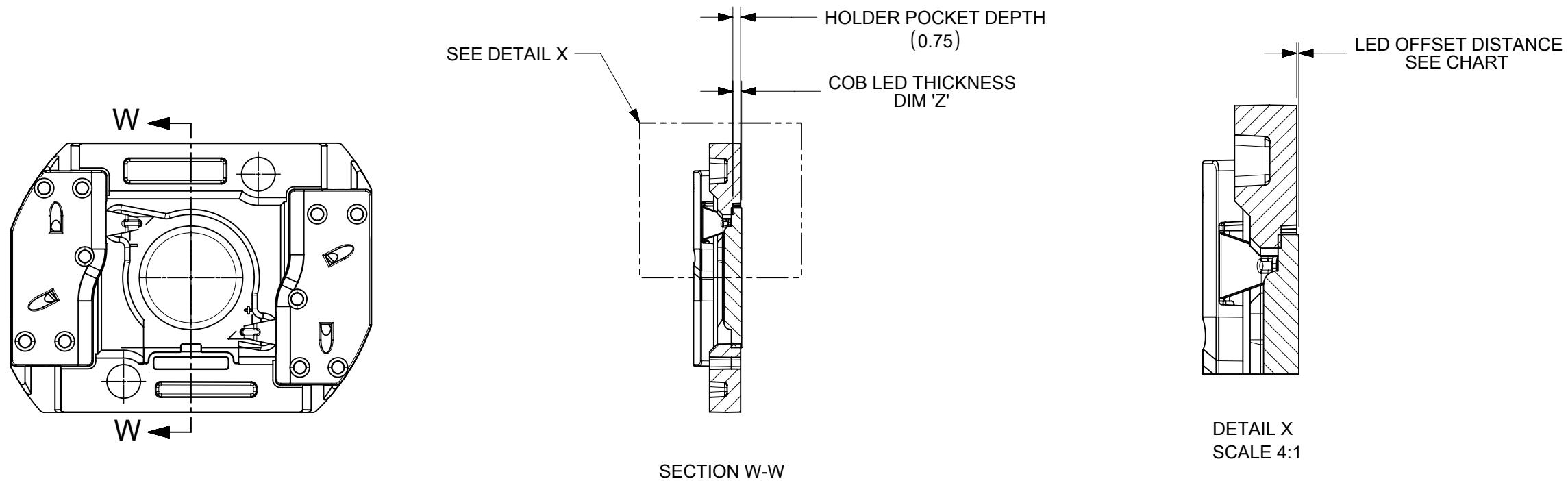


RECOMMENDED MOUNTING DIMENSIONS

THIS DRAWING CONTAINS INFORMATION THAT IS PROPRIETARY TO MOLEX ELECTRONIC TECHNOLOGIES, LLC AND SHOULD NOT BE USED WITHOUT WRITTEN PERMISSION									
DIMENSION UNITS		SCALE		CURRENT REV DESC:				<b>molex</b>	
mm		2:1		EC NO: 624787					
GENERAL TOLERANCES (UNLESS SPECIFIED)				DRWN: VLOKESHA		2019/06/13		COB LED HOLDER ASSEMBLY	
		MM	INCH	CHK'D: GGA		2019/11/11		13.5 MM X 13.5 MM SQUARE	
4 PLACES		±	±	APPR: GGA		2019/11/11		PRODUCT CUSTOMER DRAWING	
3 PLACES		±	±	INITIAL REVISION:				DOCUMENT NUMBER	
2 PLACES		± 0.13	±	DRWN: MCOLE		2013/12/09		SD-180414-112	
1 PLACE		± 0.25	±	APPR: DMCGOWAN		2013/12/09		PSD 001 C5	
0 PLACES		±	±	ANGULAR TOL		± 0.5 °		MATERIAL NUMBER	
DRAFT WHERE APPLICABLE MUST REMAIN WITHIN DIMENSIONS		THIRD ANGLE PROJECTION		DRAWING		SERIES		CUSTOMER	
		B-SIZE		180414		SEE SHEET 1		GENERAL MARKET	
								SHEET NUMBER	
								2 OF 3	

	10	9	8	7	6	5	4	3	2	1
	COB MFG	TYPE			DIM 'X'	DIM 'Y'	DIM 'Z'	DIM 'D'	OFFSET	
F	CITIZEN	CLL020, CLL022, CLU024, CLU026, CLU028			13.5	13.5	0.90	11.2	0.15	
	SEOUL	ZC6			13.5	13.5	0.90	10.0	0.15	
	TRIDONIC	SLE G5 LES10			13.5	13.5	0.90	9.4	0.15	
	CITIZEN	CLU025, CLU027			13.5	13.5	0.90	7.4	0.15	
	CITIZEN	CLU700, CLU701			13.5	13.5	0.90	7.8	0.15	
	EVERLIGHT	EAHP1313WA*, EAHP1313WB*, EAHP1313WC*			13.5	13.5	0.90	10.8	0.15	
E	EVERLIGHT	EA1313 36V/3W			13.5	13.5	0.90	10.8	0.15	
	EVERLIGHT	EA1313 36V/6W			13.5	13.5	0.90	10.8	0.15	
	EVERLIGHT	EA1313 36V/10W			13.5	13.5	0.90	10.8	0.15	
	EVERLIGHT	EA1313 36V/13W			13.5	13.5	0.90	10.8	0.15	
	VOSSLOH-SCHWABE	DMC122C			13.5	13.5	1.00	10.0	0.25	

ILLUSTRATION OF P/N 180414-2112 HOLDER MATED WITH LED



THIS DRAWING CONTAINS INFORMATION THAT IS PROPRIETARY TO MOLEX ELECTRONIC TECHNOLOGIES, LLC AND SHOULD NOT BE USED WITHOUT WRITTEN PERMISSION											
DIMENSION UNITS		SCALE		CURRENT REV DESC:							
mm		2:1		<b>molex</b> COB LED HOLDER ASSEMBLY 13.5 MM X 13.5 MM SQUARE PRODUCT CUSTOMER DRAWING							
GENERAL TOLERANCES (UNLESS SPECIFIED)											
4 PLACES	±	MM	INCH							EC NO: 624787	2019/06/13
3 PLACES	±									DRWN: VLOKESHA	2019/11/11
2 PLACES	± 0.13									CHK'D: GGA	2019/11/11
1 PLACE	± 0.25			APPR: GGA	2019/11/11						
0 PLACES	±			INITIAL REVISION:							
ANGULAR TOL		± 0.5°		DRWN: MCOLE	2013/12/09						
DRAFT WHERE APPLICABLE MUST REMAIN WITHIN DIMENSIONS		THIRD ANGLE PROJECTION		APPR: DMCGOWAN	2013/12/09						
DRAWING		SERIES		DOCUMENT NUMBER		DOC TYPE	DOC PART	REVISION			
B-SIZE		180414		SD-180414-112		PSD	001	C5			
MATERIAL NUMBER		CUSTOMER		SHEET NUMBER							
SEE SHEET 1		GENERAL MARKET		3 OF 3							