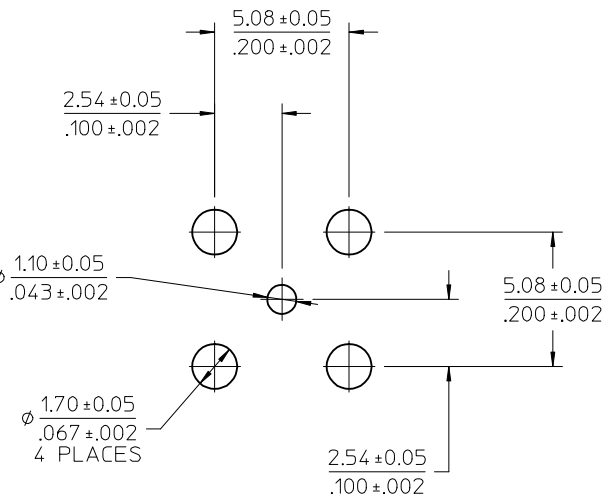
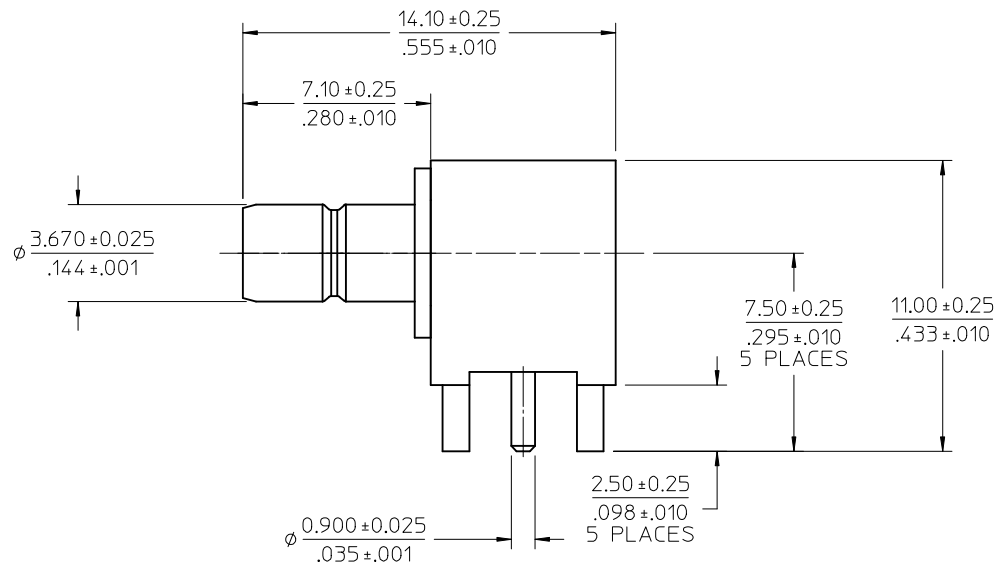
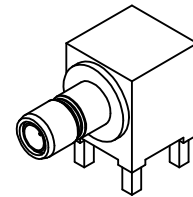


MATERIALS AND FINISHES

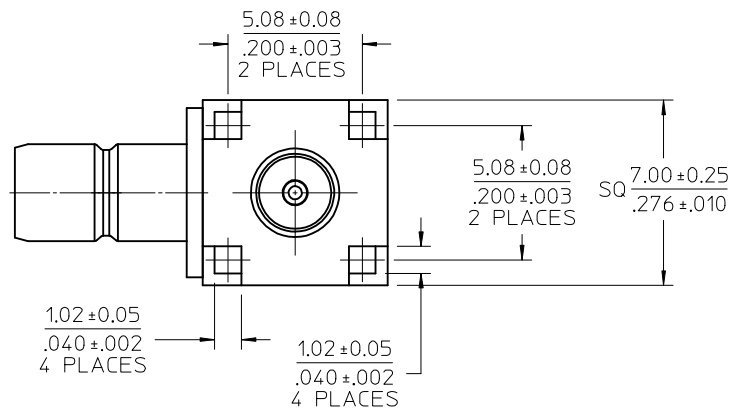
BODY, HOUSING BRASS  
PLATED GOLD

CENTER CONTACT BRASS  
PLATED GOLD

INSULATOR TEFLON



RECOMMENDED PCB HOLE



PART # 73404-6110

PS-89675-3540	PRODUCT SPECIFICATION
SPECIFICATION	DESCRIPTION

<p><b>NEW RELEASED</b> (PDR0908357)</p> <p>EC NO: URF-2010-0096 2009/08/24</p> <p>DRWNLIN 2009/09/02</p> <p>CHKD: 2009/09/03</p> <p>APPR:MHUANG</p>	QUALITY SYMBOLS	DESCRIPTION
	<p>▽=0</p> <p>▽=0</p>	
	REV	A
	REV	

GENERAL TOLERANCES (UNLESS SPECIFIED)	
mm	INCH
4 PLACES ± .010	± .0004
3 PLACES ± .015	± .0006
2 PLACES ± .020	± .0008
1 PLACE ± .030	± .0012
ANGULAR ± 2°	
DRAFT WHERE APPLICABLE MUST REMAIN WITHIN DIMENSIONS	

DIMENSION STYLE		SCALE	
MM/IN		METRIC	
DRAWN BY	DATE	TITLE	THIRD ANGLE PROJECTION
EVITA	2009/08/05	SMB JACK, R/A, 50 OHMS PCB SMB-J/RA	
CHECKED BY	DATE		
JUDY	2009/08/05		
APPROVED BY	DATE	MOLEX INCORPORATED	
MISEN	2009/08/05	DOCUMENT NO.	
MATERIAL NO.	734046110	SD-73404-611	
SIZE	C	SHEET NO.	
THIS DRAWING CONTAINS INFORMATION THAT IS PROPRIETARY TO MOLEX INCORPORATED AND SHOULD NOT BE USED WITHOUT WRITTEN PERMISSION		1 OF 1	