

NOTES:

1.MATERIAL:

HOUSING: HIGH TEMPERATURE THERMAL PLASTIC,
UL94V-0, COLOR: BLACK.

TERMINAL: COPPER ALLOY,
FORKLOCK: COPPER ALLOY.

2.TERMINAL PLATING :

CONTACT AREA:

(A) GOLD FLASH;

(B) GOLD, THICKNESS=0.76 MICRONS MINIMUM;

(C) GOLD, THICKNESS=0.38 MICRONS MINIMUM;

SOLDER AREA: TIN, THICKNESS=1.27 MICRONS MINIMUM,
UNDER PLATE: NICKEL, THICKNESS=1.27 MICRONS MINIMUM.

3.FORKLOCK PLATING:

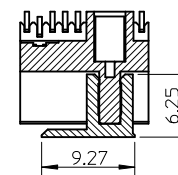
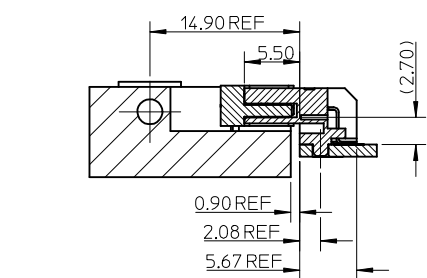
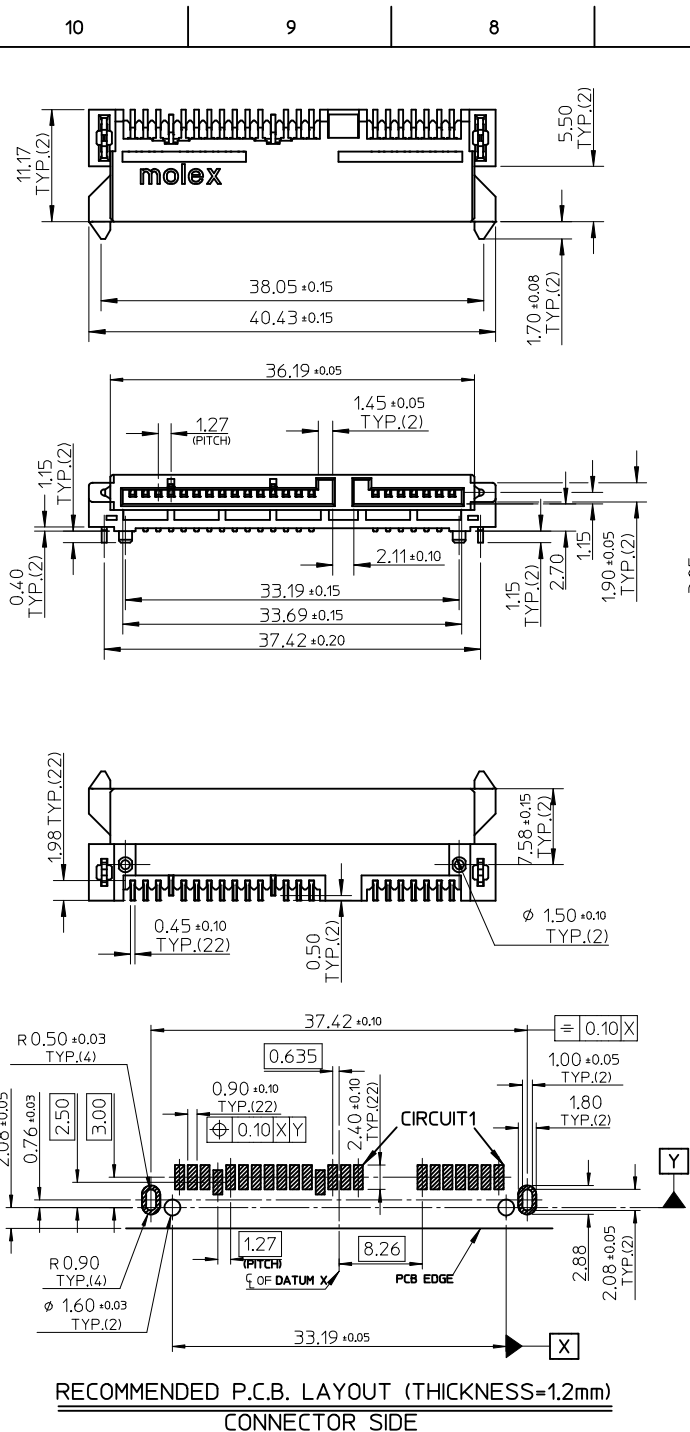
SOLDER AREA: TIN, THICKNESS=1.27 MICRONS MINIMUM,
UNDER PLATE: NICKEL, THICKNESS=1.27 MICRONS MINIMUM.

4.PRODUCT SPECIFICATION: REFER TO PS-67492-001,
5.PACKAGING METHOD: TAPE REEL, DETAIL REFER TO
PK-67492-007.

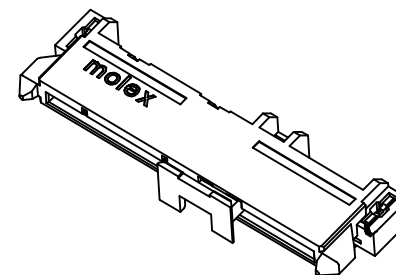
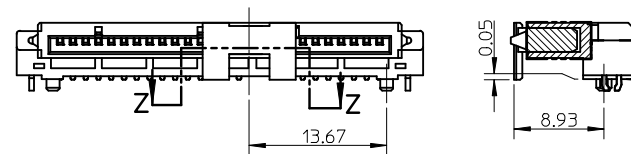
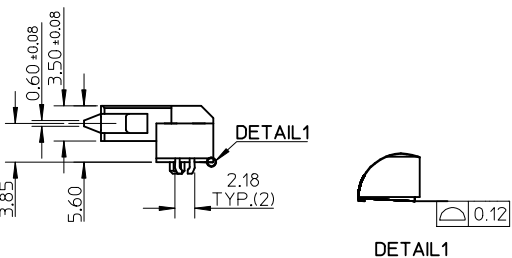
6.MATING PARTS: 87703/87672.

P/N	PLATING	REMARK
67492-1830	NOTES 2 (A)	WITH CAP
67492-1831	NOTES 2 (B)	
67492-1832	NOTES 2 (C)	WITHOUT CAP
67492-1820	NOTES 2 (A)	
67492-1821	NOTES 2 (B)	
67492-1822	NOTES 2 (C)	

RTM EC NO: 2006/02/08 DRW:WGLLI CHKD: 2006/02/28 APPR:GRWA 2006/03/01	QUALITY SYMBOLS ▽=0 ▽=0	GENERAL TOLERANCES (UNLESS SPECIFIED)	DIMENSION STYLE MM ONLY	SCALE 2:1	DESIGN UNITS METRIC	THIRD ANGLE PROJECTION	
	4 PLACES ± --- ± --- 3 PLACES ± --- ± --- 2 PLACES ± 0.15 ± --- 1 PLACE ± 0.25 ± ---	mm INCH	DRAWN BY: GRATE MA DATE: 2003/10/10 CHECKED BY: DATE: 2003/10/10 APPROVED BY: SAM DATE: 2003/10/10	TITLE SATA HOST RECEPTACLE R/A SMT TYPE -LEAD FREE-	MOLEX INCORPORATED DOCUMENT NO. SD-67492-009 SHEET NO. 1 OF 1		
	ANGULAR ± 3 °	DRAFT WHERE APPLICABLE MUST REMAIN WITHIN DIMENSIONS	MATERIAL NO. SEE TABLE				
	SIZE A3	THIS DRAWING CONTAINS INFORMATION THAT IS PROPRIETARY TO MOLEX INCORPORATED AND SHOULD NOT BE USED WITHOUT WRITTEN PERMISSION					



SECTION Z-Z



NOTES:

1.MATERIAL:

HOUSING: HIGH TEMPERATURE THERMAL PLASTIC, UL94V-0, COLOR: BLACK.

TERMINAL: COPPER ALLOY, FORKLOCK: COPPER ALLOY.

2.TERMINAL PLATING :

CONTACT AREA:

(A) GOLD FLASH;

(B) GOLD, THICKNESS=0.76 MICRONS MINIMUM;

(C) GOLD, THICKNESS=0.38 MICRONS MINIMUM;

SOLDER AREA: TIN, THICKNESS=1.27 MICRONS MINIMUM, UNDER PLATE: NICKEL, THICKNESS=1.27 MICRONS MINIMUM.

3.FORKLOCK PLATING:

SOLDER AREA: TIN, THICKNESS=1.27 MICRONS MINIMUM, UNDER PLATE: NICKEL, THICKNESS=1.27 MICRONS MINIMUM.

4.PRODUCT SPECIFICATION: REFER TO PS-67492-001.

5.PACKAGING METHOD: TAPE REEL, DETAIL REFER TO PK-67492-007.

6.MATING PARTS: 87703/87672.

P/N	PLATING	REMARK
67492-1830	NOTES 2 (A)	WITH CAP
67492-1831	NOTES 2 (B)	
67492-1832	NOTES 2 (C)	WITHOUT CAP
67492-1820	NOTES 2 (A)	
67492-1821	NOTES 2 (B)	
67492-1822	NOTES 2 (C)	

RTM	EC NO:	2006/02/08	QUALITY SYMBOLS	GENERAL TOLERANCES (UNLESS SPECIFIED)	DIMENSION STYLE		SCALE	DESIGN UNITS	THIRD ANGLE PROJECTION													
	DRW:WGLLI	2006/02/28			MM ONLY	2:1	METRIC															
B	CHKD:	2006/03/01	DESCRIPTION	<table border="1"> <tr> <th></th> <th>mm</th> <th>INCH</th> </tr> <tr> <td>4 PLACES</td> <td>± ---</td> <td>± ---</td> </tr> <tr> <td>3 PLACES</td> <td>± ---</td> <td>± ---</td> </tr> <tr> <td>2 PLACES</td> <td>± 0.15</td> <td>± ---</td> </tr> <tr> <td>1 PLACE</td> <td>± 0.25</td> <td>± ---</td> </tr> </table>		mm	INCH	4 PLACES	± ---	± ---	3 PLACES	± ---	± ---	2 PLACES	± 0.15	± ---	1 PLACE	± 0.25	± ---	DRAWN BY	DATE	TITLE
		mm			INCH																	
4 PLACES	± ---	± ---																				
3 PLACES	± ---	± ---																				
2 PLACES	± 0.15	± ---																				
1 PLACE	± 0.25	± ---																				
REV	APPR:GRM/A		<p>ANGULAR ± 3 °</p> <p>DRAFT WHERE APPLICABLE MUST REMAIN WITHIN DIMENSIONS</p>	GRATE MA	2003/10/10	SATA HOST RECEPTACLE R/A SMT TYPE -LEAD FREE-																
				CHECKED BY	DATE	MOLEX INCORPORATED																
				YA JUN	2003/10/10																	
				APPROVED BY	DATE	DOCUMENT NO.																
				SAM	2003/10/10	SD-67492-009																
				MATERIAL NO.		SHEET NO.																
				SEE TABLE		1 OF 1																
				SIZE	THIS DRAWING CONTAINS INFORMATION THAT IS PROPRIETARY TO MOLEX INCORPORATED AND SHOULD NOT BE USED WITHOUT WRITTEN PERMISSION																	
				A3																		