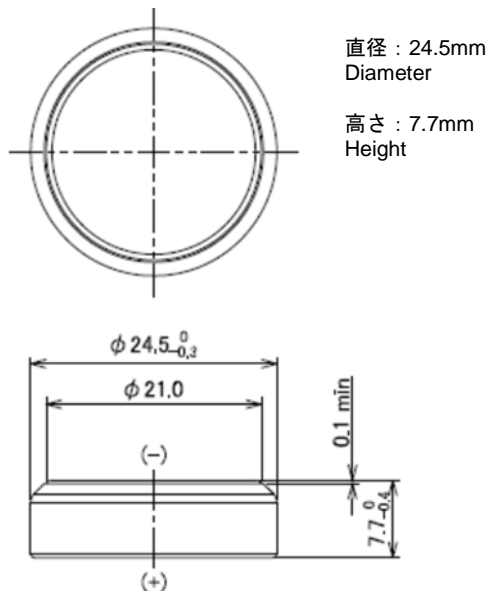


コイン形二酸化マンガンリチウム電池  
 Coin manganese dioxide lithium batteries

# CR2477W

**■外形寸法** Dimensions(mm)


(Unit : mm)

**■定格** Specifications

公称電圧 <b>Nominal Voltage</b>	3 V
公称容量 (終止電圧 2.0V) <b>Nominal Capacity (2.0V cutoff)</b>	1000 mAh
推奨連続放電電流値 (容量利用率高) <b>Recommended Continuous Discharge Current (High capacity usage rate)</b>	≤1 mA
標準質量 <b>Weight</b>	11 g
使用温度範囲 <b>Operating Temperature</b>	-40 ~ +125°C

**用途** Applications

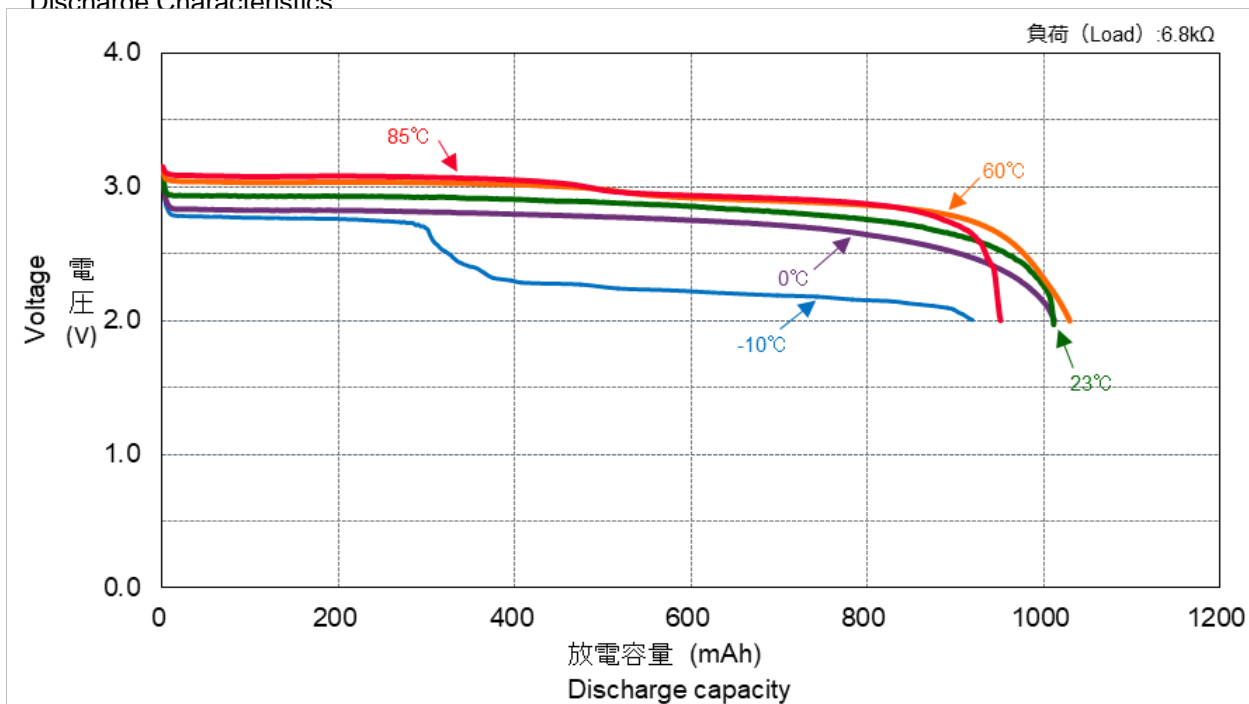
- TPMS(タイヤ空気圧監視システム)
  - ETC
  - FA機器
  - SRAMやリアルタイムクロック等メモリーバックアップ
  - その他高温/低温環境で使われる機器
- TPMS (Tire Pressure Monitoring System)
  - ETC (Electronic Toll Collection System)
  - Factory Automation Instruments
  - Memory Back-up Power Source for SRAM and Real Time Clock (RTC)
  - Other devices used in wide temperature environment

**UL認定合格部品** UL Recognized components

- 許可番号 **Certification number** : MH12566
- User replaceable

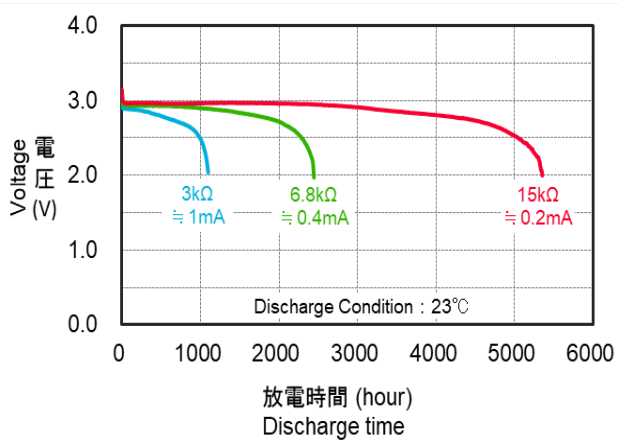
**■放電特性**

## Discharge Characteristics



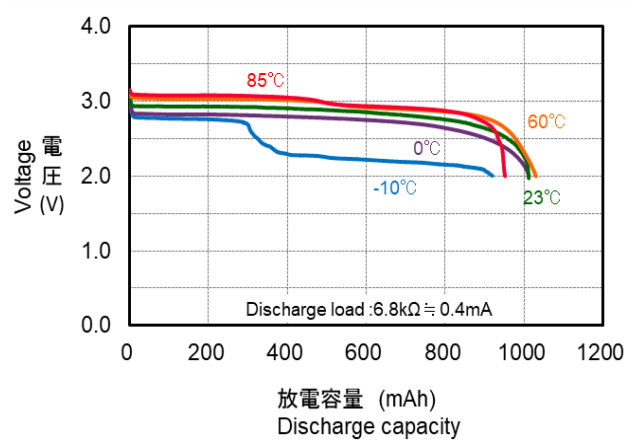
■放電負荷特性

Discharge Characteristics by Load



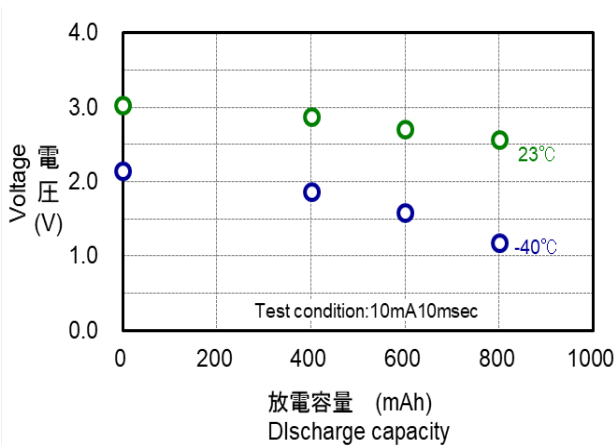
■放電温度特性

Discharge Characteristics by Temperature



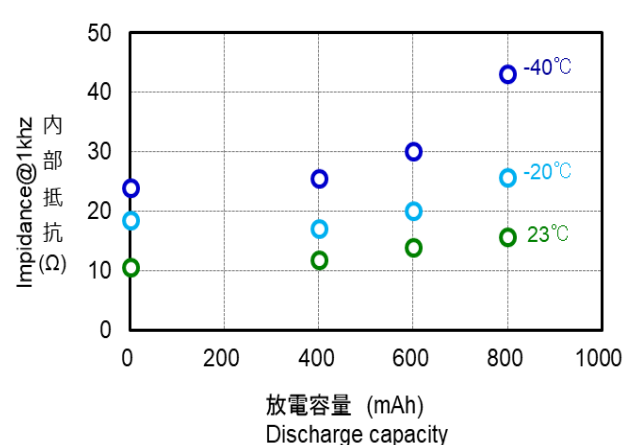
■閉路電圧特性

Closed Circuit Voltage by Temperature



■内部抵抗

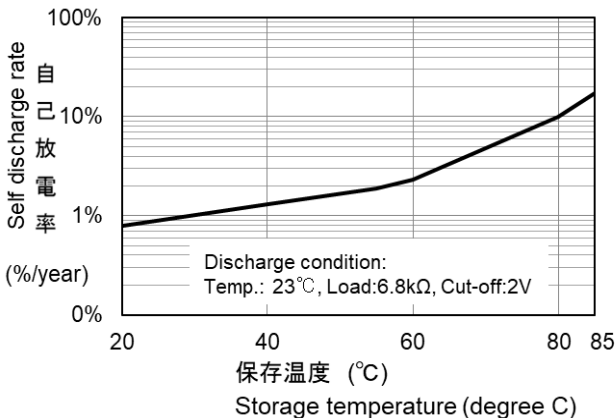
Impedance by Temperature



■自己放電特性

Self Discharge Characteristic by Temperature

注: 20°C未満の自己放電率は20°Cと同じ自己放電率になります。  
Note: The self-discharge rate of less than 20°C shows the same self-discharge rate as 20°C.



\*記載のデータ及び数値は、参考値であり保証値ではありません。

\*Data is not guaranteed, and is provided for reference purposes only.