

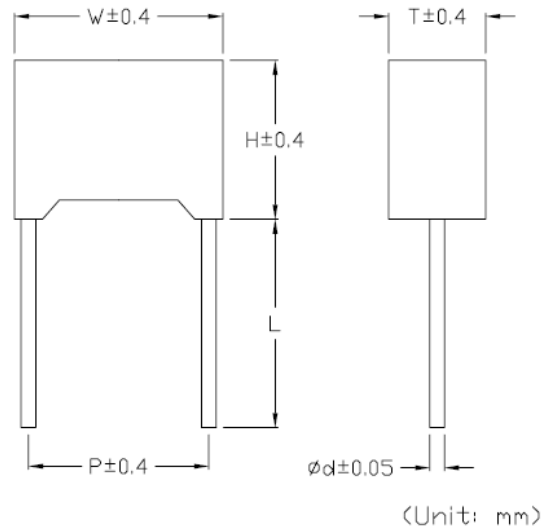
CMPB Series

Metallized Polypropylene Film Capacitors (Encapsulated)

TRIGON
COMPONENTS



Configuration



FEATURES

- Metallized polypropylene structure.
- Low loss at high frequency.
- Small inherent temperature rise.
- Plastic case (UL 94 V-0), Epoxy resin sealing.
- RoHS Compliant.

APPLICATIONS

- Widely used in high frequency, DC, AC and pulse circuits.
- S-correction circuits for TV sets and monitors.

ORDERING CODE

CMPB 223 J 251 L 100 T
(1) (2) (3) (4) (5) (6) (7)

- (1) Metallized Polypropylene Film Capacitor (Encapsulated)
- (2) Capacitance Code
- (3) Tolerance Code
- (4) Rated Voltage Code
- (5) Style
- (6) Lead to Lead Distance
- (7) Package

※Please refer to complete Ordering Code document (CPMx-Ord) for more ordering options.

Specification:

Item	Performance Characteristics
Reference Standard	GB/T 10190 (IEC 60384-16)
Climatic Category	40/105/21
Rated Temperature	85°C
Operating Temperature	-40°C ~ +105°C (+85°C to +105°C: Decreasing Factor 1.25% per °C for V_R (dc))
Rated Voltage	160Vdc (90Vac), 250Vdc (160Vac), 400Vdc (220Vac), 630Vdc (250Vac), 1000Vdc (400Vac), 1600Vdc (500Vac), 2000Vdc (700Vac)
Capacitance Range	0.000586 μ F ~ 15.0 μ F
Capacitance Tolerance	±2% (G), ±3% (H), ±5% (J), ±10% (K), ±20%(M)
Voltage Proof	1.60 U_R (5s)
Dissipation Factor	$\leq 10 \times 10^{-4}$ AT 1KHz, 20°C
Insulation Resistance	$\geq 50,000 \text{ M}\Omega$ (CR $\leq 0.33\mu$ F) (20°C, 100V, 1min) $\geq 15,000 \text{ M}\Omega$ (CR>0.33 μ F)

Capacitor

CMPB Series

Metallized Polypropylene Film Capacitors (Encapsulated)

TRIGON
COMPONENTS

Dimensions: (Unit: mm)

RV	160VDC (90VAC)						RV	160VDC (90VAC)					
Cap. (μF)	W	H	T	P	d	P/N	Cap. (μF)	W	H	T	P	d	P/N
0.027	7.2	7.5	3.5	5.0	0.5	CMPB273-161+050~	0.82	17.5	14.5	8.5	15.0	0.8	CMPB824-161+150~
0.033	7.2	7.5	3.5	5.0	0.5	CMPB333-161+050~	1.0	17.5	16.0	10.0	15.0	0.8	CMPB105-161+150~
0.039	7.2	7.5	3.5	5.0	0.5	CMPB393-161+050~	1.2	17.5	16.0	10.0	15.0	0.8	CMPB125-161+150~
0.047	7.2	9.5	4.5	5.0	0.6	CMPB473-161+050~	1.5	17.5	19.0	11.0	15.0	0.8	CMPB155-161+150~
0.056	7.2	9.5	4.5	5.0	0.6	CMPB563-161+050~	1.8	17.5	19.0	11.0	15.0	0.8	CMPB185-161+150~
0.068	7.2	9.5	4.5	5.0	0.6	CMPB683-161+050~	0.47	26.5	15.0	6.0	22.5	0.8	CMPB474-161+225~
0.082	7.2	10.0	5.0	5.0	0.6	CMPB823-161+050~	0.56	26.5	15.0	6.0	22.5	0.8	CMPB564-161+225~
0.10	7.2	10.0	5.0	5.0	0.6	CMPB104-161+050~	0.68	26.5	15.0	6.0	22.5	0.8	CMPB684-161+225~
0.12	7.2	11.0	6.0	5.0	0.6	CMPB124-161+050~	0.82	26.5	16.0	7.0	22.5	0.8	CMPB824-161+225~
0.15	7.2	11.0	6.0	5.0	0.6	CMPB154-161+050~	1.0	26.5	16.0	7.0	22.5	0.8	CMPB105-161+225~
0.068	10.5	9.0	4.0	7.5	0.6	CMPB683-161+075~	1.2	26.5	17.0	8.5	22.5	0.8	CMPB125-161+225~
0.082	10.5	9.0	4.0	7.5	0.6	CMPB823-161+075~	1.5	26.5	17.0	8.5	22.5	0.8	CMPB155-161+225~
0.10	10.5	11.0	5.0	7.5	0.6	CMPB104-161+075~	1.8	26.5	18.5	10.0	22.5	0.8	CMPB185-161+225~
0.12	10.5	11.0	5.0	7.5	0.6	CMPB124-161+075~	2.2	26.5	20.0	11.0	22.5	0.8	CMPB225-161+225~
0.15	10.5	12.0	6.0	7.5	0.6	CMPB154-161+075~	2.7	26.5	22.0	12.0	22.5	0.8	CMPB275-161+225~
0.18	10.5	12.0	6.0	7.5	0.6	CMPB184-161+075~	3.3	26.5	22.0	12.0	22.5	0.8	CMPB335-161+225~
0.082	13.0	9.0	4.0	10.0	0.6	CMPB823-161+100~	1.0	32.0	18.0	9.0	27.5	0.8	CMPB105-161+275~
0.10	13.0	9.0	4.0	10.0	0.6	CMPB104-161+100~	1.2	32.0	18.0	9.0	27.5	0.8	CMPB125-161+275~
0.12	13.0	11.0	5.0	10.0	0.6	CMPB124-161+100~	1.5	32.0	18.0	9.0	27.5	0.8	CMPB155-161+275~
0.15	13.0	11.0	5.0	10.0	0.6	CMPB154-161+100~	1.8	32.0	18.0	9.0	27.5	0.8	CMPB185-161+275~
0.18	13.0	11.0	5.0	10.0	0.6	CMPB184-161+100~	2.2	32.0	18.0	9.0	27.5	0.8	CMPB225-161+275~
0.22	13.0	12.0	6.0	10.0	0.6	CMPB224-161+100~	2.7	32.0	20.0	11.0	27.5	0.8	CMPB275-161+275~
0.27	13.0	12.0	6.0	10.0	0.6	CMPB274-161+100~	3.3	32.0	20.0	11.0	27.5	0.8	CMPB335-161+275~
0.18	17.5	11.0	5.0	15.0	0.8	CMPB184-161+150~	3.9	32.0	22.0	13.0	27.5	0.8	CMPB395-161+275~
0.22	17.5	11.0	5.0	15.0	0.8	CMPB224-161+150~	4.7	32.0	28.0	14.0	27.5	0.8	CMPB475-161+275~
0.27	17.5	11.0	5.0	15.0	0.8	CMPB274-161+150~	5.6	32.0	24.5	15.0	27.5	0.8	CMPB565-161+275~
0.33	17.5	11.0	5.0	15.0	0.8	CMPB334-161+150~	6.8	32.0	33.0	18.0	27.5	0.8	CMPB685-161+275~
0.39	17.5	12.0	6.0	15.0	0.8	CMPB394-161+150~	8.2	32.0	33.0	18.0	27.5	0.8	CMPB825-161+275~
0.47	17.5	12.0	6.0	15.0	0.8	CMPB474-161+150~	10.0	32.0	33.0	18.0	27.5	0.8	CMPB106-161+275~
0.56	17.5	13.5	7.5	15.0	0.8	CMPB564-161+150~	12.0	32.0	37.0	22.0	27.5	0.8	CMPB126-161+275~
0.68	17.5	13.5	7.5	15.0	0.8	CMPB684-161+150~	15.0	32.0	37.0	22.0	27.5	0.8	CMPB156-161+275~

- ※ Remark: 1. (-)= Capacitance tolerance code, M=±20%, K=±10%, J=±5%.
 2. (+)= Lead style code.
 3. (~)= package code.

CMPB Series

Metallized Polypropylene Film Capacitors (Encapsulated)

TRIGON
COMPONENTS

Dimensions: (Unit: mm)

RV	250VDC (160VAC)						RV	250VDC (160VAC)					
Cap. (μF)	W	H	T	P	d	P/N	Cap. (μF)	W	H	T	P	d	P/N
0.012	7.2	7.5	3.5	5.0	0.5	CMPB123-251+050~	0.18	17.5	11.0	5.0	15.0	0.8	CMPB184-251+150~
0.015	7.2	7.5	3.5	5.0	0.5	CMPB153-251+050~	0.22	17.5	11.0	5.0	15.0	0.8	CMPB224-251+150~
0.018	7.2	7.5	3.5	5.0	0.5	CMPB183-251+050~	0.27	17.5	12.0	6.0	15.0	0.8	CMPB2744-251+150~
0.022	7.2	7.5	3.5	5.0	0.5	CMPB223-251+050~	0.33	17.5	12.0	6.0	15.0	0.8	CMPB334-251+150~
0.027	7.2	7.5	3.5	5.0	0.5	CMPB273-251+050~	0.39	17.5	13.5	7.5	15.0	0.8	CMPB394-251+150~
0.033	7.2	7.5	3.5	5.0	0.5	CMPB333-251+050~	0.47	17.5	13.5	7.5	15.0	0.8	CMPB474-251+150~
0.039	7.2	7.5	3.5	5.0	0.5	CMPB393-251+050~	0.56	17.5	13.5	7.5	15.0	0.8	CMPB564-251+150~
0.047	7.2	9.5	4.5	5.0	0.6	CMPB473-251+050~	0.68	17.5	14.5	8.5	15.0	0.8	CMPB684-251+150~
0.056	7.2	9.5	4.5	5.0	0.6	CMPB563-251+050~	0.82	17.5	16.0	10.0	15.0	0.8	CMPB824-251+150~
0.068	7.2	10.0	5.0	5.0	0.6	CMPB683-251+050~	1.0	17.5	16.0	10.0	15.0	0.8	CMPB105-251+150~
0.082	7.2	10.0	5.0	5.0	0.6	CMPB823-251+050~	1.2	17.5	19.0	11.0	15.0	0.8	CMPB125-251+150~
0.10	7.2	11.0	6.0	5.0	0.6	CMPB104-251+050~	0.39	26.5	15.0	6.0	22.5	0.8	CMPB394-251+225~
0.12	7.2	11.0	6.0	5.0	0.6	CMPB124-251+050~	0.47	26.5	15.0	6.0	22.5	0.8	CMPB474-251+225~
0.027	10.5	9.0	4.0	7.5	0.6	CMPB273-251+075~	0.56	26.5	15.0	6.0	22.5	0.8	CMPB564-251+225~
0.033	10.5	9.0	4.0	7.5	0.6	CMPB333-251+075~	0.68	26.5	15.0	6.0	22.5	0.8	CMPB684-251+225~
0.039	10.5	9.0	4.0	7.5	0.6	CMPB393-251+075~	0.82	26.5	15.0	6.0	22.5	0.8	CMPB824-251+225~
0.047	10.5	9.0	4.0	7.5	0.6	CMPB473-251+075~	1.0	26.5	16.0	7.0	22.5	0.8	CMPB105-251+225~
0.056	10.5	9.0	4.0	7.5	0.6	CMPB563-251+075~	1.2	26.5	16.0	7.0	22.5	0.8	CMPB125-251+225~
0.068	10.5	9.0	4.0	7.5	0.6	CMPB683-251+075~	1.5	26.5	17.0	8.5	22.5	0.8	CMPB155-251+225~
0.82	10.5	11.0	5.0	7.5	0.6	CMPB823-251+075~	1.8	26.5	18.5	10.0	22.5	0.8	CMPB185-251+225~
0.10	10.5	11.0	5.0	7.5	0.6	CMPB104-251+075~	2.2	26.5	20.0	11.0	22.5	0.8	CMPB225-251+225~
0.12	10.5	11.0	5.0	7.5	0.6	CMPB124-251+075~	2.7	26.5	22.0	12.0	22.5	0.8	CMPB275-251+225~
0.15	10.5	12.0	6.0	7.5	0.6	CMPB154-251+075~	0.82	32.0	18.0	9.0	27.5	0.8	CMPB824-251+275~
0.18	10.5	12.0	6.0	7.5	0.6	CMPB184-251+075~	1.0	32.0	18.0	9.0	27.5	0.8	CMPB105-251+275~
0.033	13.0	9.0	4.0	10.0	0.6	CMPB333-251+100~	1.2	32.0	18.0	9.0	27.5	0.8	CMPB125-251+275~
0.039	13.0	9.0	4.0	10.0	0.6	CMPB393-251+100~	1.5	32.0	18.0	9.0	27.5	0.8	CMPB155-251+275~
0.047	13.0	9.0	4.0	10.0	0.6	CMPB473-251+100~	1.8	32.0	18.0	9.0	27.5	0.8	CMPB185-251+275~
0.056	13.0	9.0	4.0	10.0	0.6	CMPB563-251+100~	2.2	32.0	18.0	9.0	27.5	0.8	CMPB225-251+275~
0.068	13.0	9.0	4.0	10.0	0.6	CMPB683-251+100~	2.7	32.0	20.0	11.0	27.5	0.8	CMPB275-251+275~
0.082	13.0	9.0	4.0	10.0	0.6	CMPB823-251+100~	3.3	32.0	20.0	11.0	27.5	0.8	CMPB335-251+275~
0.10	13.0	11.0	5.0	10.0	0.6	CMPB104-251+100~	3.9	32.0	22.0	13.0	27.5	0.8	CMPB395-251+275~
0.12	13.0	11.0	5.0	10.0	0.6	CMPB124-251+100~	4.7	32.0	28.0	14.0	27.5	0.8	CMPB475-251+275~
0.15	13.0	11.0	5.0	10.0	0.6	CMPB154-251+100~	5.6	32.0	24.5	15.0	27.5	0.8	CMPB565-251+275~
0.18	13.0	12.0	6.0	10.0	0.6	CMPB184-251+100~	6.8	32.0	33.0	18.0	27.5	0.8	CMPB685-251+275~
0.22	13.0	12.0	6.0	10.0	0.6	CMPB224-251+100~	8.2	32.0	33.0	18.0	27.5	0.8	CMPB825-251+275~
0.10	17.5	11.0	5.0	15.0	0.8	CMPB104-251+150~	10.0	32.0	33.0	18.0	27.5	0.8	CMPB106-251+275~
0.12	17.5	11.0	5.0	15.0	0.8	CMPB124-251+150~	12.0	32.0	37.0	22.0	27.5	0.8	CMPB126-251+275~
0.15	17.5	11.0	5.0	15.0	0.8	CMPB154-251+150~	15.0	32.0	37.0	22.0	27.5	0.8	CMPB156-251+275~

- ※ Remark: 1. (-)= Capacitance tolerance code, M=±20%, K=±10%, J=±5%.
 2. (+)= Lead style code.
 3. (-)= Package code.

Capacitor

CMPB Series

Metallized Polypropylene Film Capacitors (Encapsulated)

TRIGON
COMPONENTS

Dimensions: (Unit: mm)

RV	400VDC (220VAC)						RV	400VDC (220VAC)					
Cap. (μF)	W	H	T	P	d	P/N	Cap. (μF)	W	H	T	P	d	P/N
0.0039	7.2	7.5	3.5	5.0	0.5	CMPB392-401+050~	0.10	17.5	11.0	5.0	15.0	0.8	CMPB104-401+150~
0.0047	7.2	7.5	3.5	5.0	0.5	CMPB472-401+050~	0.12	17.5	11.0	5.0	15.0	0.8	CMPB124-401+150~
0.0056	7.2	7.5	3.5	5.0	0.5	CMPB562-401+050~	0.15	17.5	12.0	6.0	15.0	0.8	CMPB154-401+150~
0.0068	7.2	7.5	3.5	5.0	0.5	CMPB682-401+050~	0.18	17.5	12.0	6.0	15.0	0.8	CMPB184-401+150~
0.0082	7.2	7.5	3.5	5.0	0.5	CMPB822-401+050~	0.22	17.5	13.5	7.5	15.0	0.8	CMPB224-401+150~
0.010	7.2	7.5	3.5	5.0	0.5	CMPB103-401+050~	0.27	17.5	13.5	7.5	15.0	0.8	CMPB274-401+150~
0.012	7.2	7.5	3.5	5.0	0.5	CMPB123-401+050~	0.33	17.5	14.5	8.5	15.0	0.8	CMPB334-401+150~
0.015	7.2	9.5	4.5	5.0	0.6	CMPB153-401+050~	0.39	17.5	16.0	10.0	15.0	0.8	CMPB394-401+150~
0.018	7.2	9.5	4.5	5.0	0.6	CMPB183-401+050~	0.47	17.5	16.0	10.0	15.0	0.8	CMPB474-401+150~
0.022	7.2	9.5	4.5	5.0	0.6	CMPB223-401+050~	0.56	17.5	19.0	11.0	15.0	0.8	CMPB564-401+150~
0.027	7.2	10.0	5.0	5.0	0.6	CMPB273-401+050~	0.68	17.5	19.0	11.0	15.0	0.8	CMPB684-401+150~
0.033	7.2	11.0	6.0	5.0	0.6	CMPB333-401+050~	0.18	26.5	15.0	6.0	22.5	0.8	CMPB184-401+225~
0.039	7.2	11.0	6.0	5.0	0.6	CMPB393-401+050~	0.22	26.5	15.0	6.0	22.5	0.8	CMPB224-401+225~
0.047	7.2	11.0	6.0	5.0	0.6	CMPB473-401+050~	0.27	26.5	15.0	6.0	22.5	0.8	CMPB274-401+225~
0.010	10.5	9.0	4.0	7.5	0.6	CMPB103-401+075~	0.33	26.5	15.0	6.0	22.5	0.8	CMPB334-401+225~
0.012	10.5	9.0	4.0	7.5	0.6	CMPB123-401+075~	0.39	26.5	16.0	7.0	22.5	0.8	CMPB394-401+225~
0.015	10.5	9.0	4.0	7.5	0.6	CMPB153-401+075~	0.47	26.5	16.0	7.0	22.5	0.8	CMPB474-401+225~
0.018	10.5	9.0	4.0	7.5	0.6	CMPB183-401+075~	0.56	26.5	17.0	8.5	22.5	0.8	CMPB564-401+225~
0.022	10.5	9.0	4.0	7.5	0.6	CMPB223-401+075~	0.68	26.5	17.0	8.5	22.5	0.8	CMPB684-401+225~
0.027	10.5	9.0	4.0	7.5	0.6	CMPB273-401+075~	0.82	26.5	18.5	10.0	22.5	0.8	CMPB824-401+225~
0.033	10.5	11.0	5.0	7.5	0.6	CMPB333-401+075~	1.0	26.5	20.0	11.0	22.5	0.8	CMPB105-401+225~
0.039	10.5	11.0	5.0	7.5	0.6	CMPB393-401+075~	1.2	26.5	22.0	12.0	22.5	0.8	CMPB125-401+225~
0.047	10.5	11.0	5.0	7.5	0.6	CMPB473-401+075~	1.5	26.5	22.0	12.0	22.5	0.8	CMPB155-401+225~
0.056	10.5	12.0	6.0	7.5	0.6	CMPB563-401+075~	0.56	32.0	18.0	9.0	27.5	0.8	CMPB564-401+275~
0.068	10.5	12.0	6.0	7.5	0.6	CMPB683-401+075~	0.68	32.0	18.0	9.0	27.5	0.8	CMPB684-401+275~
0.015	13.0	9.0	4.0	10.0	0.6	CMPB153-401+100~	0.82	32.0	18.0	9.0	27.5	0.8	CMPB824-401+275~
0.018	13.0	9.0	4.0	10.0	0.6	CMPB183-401+100~	1.0	32.0	18.0	9.0	27.5	0.8	CMPB105-401+275~
0.022	13.0	9.0	4.0	10.0	0.6	CMPB223-401+100~	1.2	32.0	20.0	11.0	27.5	0.8	CMPB125-401+275~
0.027	13.0	9.0	4.0	10.0	0.6	CMPB273-401+100~	1.5	32.0	20.0	11.0	27.5	0.8	CMPB155-401+275~
0.033	13.0	9.0	4.0	10.0	0.6	CMPB333-401+100~	1.8	32.0	22.0	13.0	27.5	0.8	CMPB185-401+275~
0.039	13.0	9.0	4.0	10.0	0.6	CMPB393-401+100~	2.2	32.0	24.5	15.0	27.5	0.8	CMPB225-401+275~
0.047	13.0	11.0	5.0	10.0	0.6	CMPB473-401+100~	2.7	32.0	28.0	14.0	27.5	0.8	CMPB275-401+275~
0.056	13.0	11.0	5.0	10.0	0.6	CMPB563-401+100~	3.3	32.0	33.0	18.0	27.5	0.8	CMPB335-401+275~
0.068	13.0	11.0	5.0	10.0	0.6	CMPB683-401+100~	3.9	32.0	33.0	18.0	27.5	0.8	CMPB395-401+275~
0.082	13.0	12.0	6.0	10.0	0.6	CMPB823-401+100~	4.7	32.0	37.0	22.0	27.5	0.8	CMPB475-401+275~
0.10	13.0	12.0	6.0	10.0	0.6	CMPB104-401+100~	5.6	32.0	37.0	22.0	27.5	0.8	CMPB565-401+275~
0.068	17.5	11.0	5.0	15.0	0.8	CMPB683-401+150~							
0.082	17.5	11.0	5.0	15.0	0.8	CMPB823-401+150~							

- ※ Remark: 1. (-)= Capacitance tolerance code, M=±20%, K=±10%, J=±5%.
 2. (+)= Lead style code.
 3. (-)= Package code.

Capacitor

CMPB Series

Metallized Polypropylene Film Capacitors (Encapsulated)

TRIGON
COMPONENTS

Dimensions: (Unit: mm)

RV		630VDC (250VAC)						RV		630VDC (250VAC)						RV		630VDC (250VAC)					
Cap.(uF)	W	H	T	P	d	P/N	Cap.(uF)	W	H	T	P	d	P/N	Cap.(uF)	W	H	T	P	d	P/N			
0.0010	7.2	7.5	3.5	5.0	0.5	CMPB102-631+050~	0.027	13.0	12.0	6.0	7.5	0.6	CMPB273-631+075~	0.12	17.5	13.5	7.5	15.0	0.8	CMPB124-631+150~			
0.0012	7.2	7.5	3.5	5.0	0.5	CMPB122-631+050~	0.033	13.0	12.0	6.0	7.5	0.6	CMPB333-631+075~	0.15	17.5	13.5	7.5	15.0	0.8	CMPB154-631+150~			
0.0015	7.2	7.5	3.5	5.0	0.5	CMPB152-631+050~	0.0010	13.0	9.0	4.0	10.0	0.6	CMPB102-631+100~	0.18	17.5	14.5	8.5	15.0	0.8	CMPB184-631+150~			
0.0018	7.2	7.5	3.5	5.0	0.5	CMPB182-631+050~	0.0012	13.0	9.0	4.0	10.0	0.6	CMPB122-631+100~	0.22	17.5	16.0	10.0	15.0	0.8	CMPB224-631+150~			
0.0022	7.2	7.5	3.5	5.0	0.5	CMPB222-631+050~	0.0015	13.0	9.0	4.0	10.0	0.6	CMPB152-631+100~	0.27	17.5	19.0	11.0	15.0	0.8	CMPB274-631+150~			
0.0027	7.2	7.5	3.5	5.0	0.5	CMPB272-631+050~	0.0018	13.0	9.0	4.0	10.0	0.6	CMPB182-631+100~	0.33	17.5	19.0	11.0	15.0	0.8	CMPB334-631+150~			
0.0033	7.2	7.5	3.5	5.0	0.5	CMPB332-631+050~	0.0022	13.0	9.0	4.0	10.0	0.6	CMPB222-631+100~	0.082	26.5	15.0	6.0	22.5	0.8	CMPB823-631+225~			
0.0039	7.2	9.5	4.5	5.0	0.6	CMPB392-631+050~	0.0027	13.0	9.0	4.0	10.0	0.6	CMPB272-631+100~	0.10	26.5	15.0	6.0	22.5	0.8	CMPB104-631+225~			
0.0047	7.2	9.5	4.5	5.0	0.6	CMPB472-631+050~	0.0033	13.0	9.0	4.0	10.0	0.6	CMPB332-631+100~	0.12	26.5	15.0	6.0	22.5	0.8	CMPB124-631+225~			
0.0056	7.2	10.0	5.0	5.0	0.6	CMPB562-631+050~	0.0039	13.0	9.0	4.0	10.0	0.6	CMPB392-631+100~	0.15	26.5	15.0	6.0	22.5	0.8	CMPB154-631+225~			
0.0068	7.2	10.0	5.0	5.0	0.6	CMPB682-631+050~	0.0047	13.0	9.0	4.0	10.0	0.6	CMPB472-631+100~	0.18	26.5	15.0	6.0	22.5	0.8	CMPB184-631+225~			
0.0082	7.2	11.0	6.0	5.0	0.6	CMPB822-631+050~	0.0056	13.0	9.0	4.0	10.0	0.6	CMPB562-631+100~	0.22	26.5	16.0	7.0	22.5	0.8	CMPB224-631+225~			
0.010	7.2	11.0	6.0	5.0	0.6	CMPB103-631+050~	0.0068	13.0	9.0	4.0	10.0	0.6	CMPB682-631+100~	0.27	26.5	17.0	8.5	22.5	0.8	CMPB274-631+225~			
0.012	7.2	11.0	6.0	5.0	0.6	CMPB123-631+050~	0.0082	13.0	9.0	4.0	10.0	0.6	CMPB822-631+100~	0.33	26.5	17.0	8.5	22.5	0.8	CMPB334-631+225~			
0.010	10.5	9.0	4.0	7.5	0.6	CMPB102-631+075~	0.010	13.0	9.0	4.0	10.0	0.6	CMPB103-631+100~	0.39	26.5	18.5	10.0	22.5	0.8	CMPB394-631+225~			
0.0012	10.5	9.0	4.0	7.5	0.6	CMPB122-631+075~	0.012	13.0	9.0	4.0	10.0	0.6	CMPB123-631+100~	0.47	26.5	18.5	10.0	22.5	0.8	CMPB474-631+225~			
0.0015	10.5	9.0	4.0	7.5	0.6	CMPB152-631+075~	0.015	13.0	9.0	4.0	10.0	0.6	CMPB153-631+100~	0.56	26.5	20.0	11.0	22.5	0.8	CMPB564-631+225~			
0.0018	10.5	9.0	4.0	7.5	0.6	CMPB182-631+075~	0.018	13.0	9.0	4.0	10.0	0.6	CMPB183-631+100~	0.68	26.5	22.0	12.0	22.5	0.8	CMPB684-631+225~			
0.0022	10.5	9.0	4.0	7.5	0.6	CMPB222-631+075~	0.022	13.0	11.0	5.0	10.0	0.6	CMPB223-631+100~	0.33	32.0	18.0	9.0	27.5	0.8	CMPB334-631+275~			
0.0027	10.5	9.0	4.0	7.5	0.6	CMPB272-631+075~	0.027	13.0	11.0	5.0	10.0	0.6	CMPB273-631+100~	0.39	32.0	18.0	9.0	27.5	0.8	CMPB394-631+275~			
0.0033	10.5	9.0	4.0	7.5	0.6	CMPB332-631+075~	0.033	13.0	11.0	5.0	10.0	0.6	CMPB333-631+100~	0.47	32.0	18.0	9.0	27.5	0.8	CMPB474-631+275~			
0.0039	10.5	9.0	4.0	7.5	0.6	CMPB392-631+075~	0.039	13.0	12.0	6.0	10.0	0.6	CMPB393-631+100~	0.56	32.0	20.0	11.0	27.5	0.8	CMPB564-631+275~			
0.0047	10.5	9.0	4.0	7.5	0.6	CMPB472-631+075~	0.047	13.0	12.0	6.0	10.0	0.6	CMPB473-631+100~	0.68	32.0	20.0	11.0	27.5	0.8	CMPB684-631+275~			
0.0056	10.5	9.0	4.0	7.5	0.6	CMPB562-631+075~	0.027	17.5	11.0	5.0	15.0	0.8	CMPB273-631+150~	0.82	32.0	20.0	11.0	27.5	0.8	CMPB824-631+275~			
0.0068	10.5	9.0	4.0	7.5	0.6	CMPB682-631+075~	0.033	17.5	11.0	5.0	15.0	0.8	CMPB333-631+150~	1.0	32.0	22.0	13.0	27.5	0.8	CMPB105-631+275~			
0.0082	10.5	9.0	4.0	7.5	0.6	CMPB822-631+075~	0.039	17.5	11.0	5.0	15.0	0.8	CMPB393-631+150~	1.2	32.0	24.5	15.0	27.5	0.8	CMPB125-631+275~			
0.010	10.5	9.0	4.0	7.5	0.6	CMPB103-631+075~	0.047	17.5	11.0	5.0	15.0	0.8	CMPB473-631+150~	1.5	32.0	28.0	14.0	27.5	0.8	CMPB155-631+275~			
0.012	10.5	9.0	4.0	7.5	0.6	CMPB123-631+075~	0.056	17.5	11.0	5.0	15.0	0.8	CMPB563-631+150~	1.8	32.0	33.0	18.0	27.5	0.8	CMPB185-631+275~			
0.015	10.5	11.0	5.0	7.5	0.6	CMPB153-631+075~	0.068	17.5	12.0	6.0	15.0	0.8	CMPB683-631+150~	2.2	32.0	33.0	18.0	27.5	0.8	CMPB225-631+275~			
0.018	10.5	11.0	5.0	7.5	0.6	CMPB183-631+075~	0.082	17.5	12.0	6.0	15.0	0.8	CMPB823-631+150~	2.7	32.0	37.0	22.0	27.5	0.8	CMPB275-631+275~			
0.022	10.5	11.0	5.0	7.5	0.6	CMPB223-631+075~	0.10	17.5	13.5	7.5	15.0	0.8	CMPB104-631+150~	3.3	32.0	37.0	22.0	27.5	0.8	CMPB335-631+275~			

- ※ Remark: 1. (-)= Capacitance tolerance code, M=±20%, K=±10%, J=±5%.
 2. (+)= Lead style code.
 3. (~)= Package code.

CMPB Series

Metallized Polypropylene Film Capacitors (Encapsulated)

TRIGON
COMPONENTS

Dimensions: (Unit: mm)

RV 1000VDC (400VAC)							RV 1600VDC (600VAC)							RV 2000VDC (700VAC)						
Cap.(uF)	W	H	T	P	d	P/N	Cap.(uF)	W	H	T	P	d	P/N	Cap.(uF)	W	H	T	P	d	P/N
0.0010	13.0	9.0	4.0	10.0	0.6	CMPB102-102+100~	0.00056	17.5	11.0	5.0	15.0	0.8	CMPB561-162+150~	0.00056	17.5	11.0	5.0	15.0	0.8	CMPB561-202+150~
0.0012	13.0	9.0	4.0	10.0	0.6	CMPB122-102+100~	0.00062	17.5	11.0	5.0	15.0	0.8	CMPB621-162+150~	0.00062	17.5	11.0	5.0	15.0	0.8	CMPB621-202+150~
0.0015	13.0	9.0	4.0	10.0	0.6	CMPB152-102+100~	0.00068	17.5	11.0	5.0	15.0	0.8	CMPB681-162+150~	0.00068	17.5	11.0	5.0	15.0	0.8	CMPB681-202+150~
0.0018	13.0	9.0	4.0	10.0	0.6	CMPB182-102+100~	0.00082	17.5	11.0	5.0	15.0	0.8	CMPB821-162+150~	0.00082	17.5	11.0	5.0	15.0	0.8	CMPB821-202+150~
0.0022	13.0	9.0	4.0	10.0	0.6	CMPB222-102+100~	0.0010	17.5	11.0	5.0	15.0	0.8	CMPB102-162+150~	0.0010	17.5	11.0	5.0	15.0	0.8	CMPB102-202+150~
0.0027	13.0	9.0	4.0	10.0	0.6	CMPB272-102+100~	0.0012	17.5	11.0	5.0	15.0	0.8	CMPB122-162+150~	0.0012	17.5	11.0	5.0	15.0	0.8	CMPB122-202+150~
0.0033	13.0	9.0	4.0	10.0	0.6	CMPB332-102+100~	0.0015	17.5	11.0	5.0	15.0	0.8	CMPB152-162+150~	0.0015	17.5	11.0	5.0	15.0	0.8	CMPB152-202+150~
0.0039	13.0	9.0	4.0	10.0	0.6	CMPB392-102+100~	0.0018	17.5	11.0	5.0	15.0	0.8	CMPB182-162+150~	0.0018	17.5	11.0	5.0	15.0	0.8	CMPB182-202+150~
0.0047	13.0	11.0	5.0	10.0	0.6	CMPB472-102+100~	0.0022	17.5	11.0	5.0	15.0	0.8	CMPB222-162+150~	0.0022	17.5	11.0	5.0	15.0	0.8	CMPB222-202+150~
0.0056	13.0	11.0	5.0	10.0	0.6	CMPB562-102+100~	0.0027	17.5	11.0	5.0	15.0	0.8	CMPB272-162+150~	0.0027	17.5	11.0	5.0	15.0	0.8	CMPB272-202+150~
0.0068	13.0	11.0	5.0	10.0	0.6	CMPB682-102+100~	0.0033	17.5	11.0	5.0	15.0	0.8	CMPB332-162+150~	0.0033	17.5	11.0	5.0	15.0	0.8	CMPB332-202+150~
0.0082	13.0	12.0	6.0	10.0	0.6	CMPB822-102+100~	0.0039	17.5	11.0	5.0	15.0	0.8	CMPB392-162+150~	0.0039	17.5	11.0	5.0	15.0	0.8	CMPB392-202+150~
0.010	13.0	12.0	6.0	10.0	0.6	CMPB103-102+100~	0.0047	17.5	11.0	5.0	15.0	0.8	CMPB472-162+150~	0.0047	17.5	11.0	5.0	15.0	0.8	CMPB472-202+150~
0.0022	17.5	11.0	5.0	15.0	0.8	CMPB222-102+150~	0.0056	17.5	11.0	5.0	15.0	0.8	CMPB562-162+150~	0.0056	17.5	12.0	6.0	15.0	0.8	CMPB562-202+150~
0.0027	17.5	11.0	5.0	15.0	0.8	CMPB272-102+150~	0.0068	17.5	11.0	5.0	15.0	0.8	CMPB682-162+150~	0.0068	17.5	12.0	6.0	15.0	0.8	CMPB682-202+150~
0.0033	17.5	11.0	5.0	15.0	0.8	CMPB332-102+150~	0.0082	17.5	12.0	6.0	15.0	0.8	CMPB822-162+150~	0.0082	17.5	13.5	7.5	15.0	0.8	CMPB822-202+150~
0.0039	17.5	11.0	5.0	15.0	0.8	CMPB392-102+150~	0.010	17.5	12.0	6.0	15.0	0.8	CMPB103-162+150~	0.010	17.5	13.5	7.5	15.0	0.8	CMPB103-202+150~
0.0047	17.5	11.0	5.0	15.0	0.8	CMPB472-102+150~	0.012	17.5	12.0	6.0	15.0	0.8	CMPB123-162+150~	0.012	17.5	14.5	8.5	15.0	0.8	CMPB123-202+150~
0.0056	17.5	11.0	5.0	15.0	0.8	CMPB562-102+150~	0.015	17.5	13.5	7.5	15.0	0.8	CMPB153-162+150~	0.015	17.5	14.5	8.5	15.0	0.8	CMPB153-202+150~
0.0068	17.5	11.0	5.0	15.0	0.8	CMPB682-102+150~	0.018	17.5	13.5	7.5	15.0	0.8	CMPB183-162+150~	0.018	17.5	16.0	10.0	15.0	0.8	CMPB183-202+150~
0.0082	17.5	11.0	5.0	15.0	0.8	CMPB822-102+150~	0.022	17.5	14.5	8.5	15.0	0.8	CMPB223-162+150~	0.022	17.5	19.0	11.0	15.0	0.8	CMPB223-202+150~
0.010	17.5	11.0	5.0	15.0	0.8	CMPB103-102+150~	0.027	17.5	16.0	10.0	15.0	0.8	CMPB273-162+150~	0.0068	26.5	15.0	6.0	22.5	0.8	CMPB682-202+225~
0.012	17.5	11.0	5.0	15.0	0.8	CMPB123-102+150~	0.033	17.5	16.0	10.0	15.0	0.8	CMPB333-162+150~	0.0082	26.5	15.0	6.0	22.5	0.8	CMPB822-202+225~
0.015	17.5	12.0	6.0	15.0	0.8	CMPB153-102+150~	0.039	17.5	19.0	11.0	15.0	0.8	CMPB393-162+150~	0.010	26.5	15.0	6.0	22.5	0.8	CMPB103-202+225~
0.018	17.5	12.0	6.0	15.0	0.8	CMPB183-102+150~	0.047	26.5	19.0	11.0	15.0	0.8	CMPB473-162+150~	0.012	26.5	15.0	6.0	22.5	0.8	CMPB123-202+225~
0.022	17.5	13.5	7.5	15.0	0.8	CMPB223-102+150~	0.015	26.5	15.0	6.0	22.5	0.8	CMPB153-162+225~	0.015	26.5	15.0	6.0	22.5	0.8	CMPB153-202+225~
0.027	17.5	13.5	7.5	15.0	0.8	CMPB273-102+150~	0.018	26.5	15.0	6.0	22.5	0.8	CMPB183-162+225~	0.018	26.5	16.0	7.0	22.5	0.8	CMPB183-202+225~
0.033	17.5	14.5	8.5	15.0	0.8	CMPB333-102+150~	0.022	26.5	15.0	6.0	22.5	0.8	CMPB223-162+225~	0.022	26.5	17.0	8.5	22.5	0.8	CMPB223-202+225~
0.039	17.5	16.0	10.0	15.0	0.8	CMPB393-102+150~	0.027	26.5	16.0	7.0	22.5	0.8	CMPB273-162+225~	0.027	26.5	17.0	8.5	22.5	0.8	CMPB273-202+225~
0.047	17.5	16.0	10.0	15.0	0.8	CMPB473-102+150~	0.033	26.5	16.0	7.0	22.5	0.8	CMPB333-162+225~	0.033	26.5	18.5	10.0	22.5	0.8	CMPB333-202+225~
0.056	17.5	19.0	11.0	15.0	0.8	CMPB563-102+150~	0.039	26.5	17.0	8.5	22.5	0.8	CMPB393-162+225~	0.039	26.5	18.5	10.0	22.5	0.8	CMPB393-202+225~
0.068	17.5	19.0	11.0	15.0	0.8	CMPB683-102+150~	0.047	26.5	18.5	10.0	22.5	0.8	CMPB473-162+225~	0.047	26.5	22.0	12.0	22.5	0.8	CMPB473-202+225~
0.018	26.5	15.0	6.0	22.5	0.8	CMPB183-102+225~	0.056	26.5	18.5	10.0	22.5	0.8	CMPB563-162+225~	0.056	26.5	22.0	12.0	22.5	0.8	CMPB563-202+225~
0.022	26.5	15.0	6.0	22.5	0.8	CMPB223-102+225~	0.068	26.5	22.0	12.0	22.5	0.8	CMPB683-162+225~							
0.027	26.5	15.0	6.0	22.5	0.8	CMPB273-102+225~	0.082	26.5	22.0	12.0	22.5	0.8	CMPB823-162+225~							
0.033	26.5	15.0	6.0	22.5	0.8	CMPB333-102+225~	0.10	26.5	22.0	12.0	22.5	0.8	CMPB104-162+225~							
0.039	26.5	15.0	6.0	22.5	0.8	CMPB393-102+225~														
0.047	26.5	16.0	7.0	22.5	0.8	CMPB473-102+225~														
0.056	26.5	16.0	7.0	22.5	0.8	CMPB563-102+225~														
0.068	26.5	17.0	8.5	22.5	0.8	CMPB683-102+225~														
0.082	26.5	17.0	8.5	22.5	0.8	CMPB823-102+225~														
0.10	26.5	18.5	10.0	22.5	0.8	CMPB104-102+225~														
0.12	26.5	22.0	12.0	22.5	0.8	CMPB124-102+225~														
0.15	26.5	22.0	12.0	22.5	0.8	CMPB154-102+225~														

※ Remark: 1. (-)= Capacitance tolerance code, M=±20%, K=±10%, J=±5%.
 2. (+)= Lead style code.
 3. (~)= package code.

CMPB Series

Metallized Polypropylene Film Capacitors (Encapsulated)

TRIGON
COMPONENTS

Capacitor

ELECTRICAL CHARACTERISTIC:

No	Test items	Performance	Test Method
1	Withstand voltage (Between terminals)	Shall be no abnormality	150% Of rated voltage, 60sec. or 175% Of rated voltage, 1~5sec.
	Between terminal and enclosure	Shall be no abnormality	UR×200%+1000VDC, 60sec.
2	Insulation resistance (Between terminals)	CR ≤ 0.33uF IR ≥ 50,000MΩ CR > 0.33uF IR ≥ 15,000 (MΩ . uF)	Measured at 100±15VDC, for 60sec / 20°C
3	Capacitance	Within the tolerance specified	1KHz, 1Vrms Max. at 20°C
4	Dissipation factor	≤10X10 ⁻⁴	1KHz, 1Vrms Max. at 20°C
5	Tense strength of terminal	No wire breakage and no damage of capacitor	1. Load Force: 1.0 Kg 2. Holding Time: 10 ± 1sec
6	Bending strength of terminal	No wire breakage and no damage of capacitor	1. Load Force: 0.5 Kg 2. Bending Time: 4 x 90° in 5sec
7	Vibration	(1) Appearance: No visible damage (2) Contact: Normal	a. Frequency change: 1min. per cycle 10~55~10Hz b. Vibration distance: 1.5mm c. Course: X、Y、Z (axis) d. Time: 2h / axis (6h in total)
8	Solerability	75% Of the surface tinning	a. Solder temperature: 230±5°C b. Solder time: 2±0.5sec
9	Heat shock test	(1) Appearance: No visible damage (2) Withstand voltage: Normal (3) Capacitance change: ≤ ±3% of the initial value	The terminal of capacitor shall be immersed in the melting solder. a. Solder temperature: 270±5°C b. Solder time: 3±0.5sec c. Test voltage: 150% of the rate voltage for 1min.

CMPB Series

Metallized Polypropylene Film Capacitors (Encapsulated)

TRIGON
COMPONENTS

10	Cold Resistance	(1) Appearance: No Visible Damage (2) Capacitance Change: $\leq 0\sim -10\%$ of The Initial Value	a. Test Temperature: -40°C (IEC 68-2-21) b. Test Times: 2Hrs
11	Dry Heat Resistance	(1) Appearance: No Visible Damage (2) Withstand Voltage: Normal (3) Capacitance Change: $\leq +5\sim -2\%$ of The Initial Value (4) Insulation Resistance: $\geq 50\%$ of The Rated Value	a. Test Temperature: $85^{\circ}\text{C} \pm 2^{\circ}\text{C}$ b. Test Times: 2 Hrs.
12	Humidity Resistance	(1) Appearance : No Visible Damage (2) Withstand Voltage: Normal (3) Capacitance Change: $\leq \pm 10\%$ of The Initial Value (4) Insulation Resistance: $\geq 50\%$ of The Rated Value (5) DF ($\tan\delta$) ≤ 0.005	a. Test Temperature: $40^{\circ}\text{C} \pm 2^{\circ}\text{C}$ b. Relative Humidity: 90 ~ 95% c. Test Times: 240 \pm 8 Hrs d. Test Voltage: 130% of The Rated Voltage for 1 Minute.
13	Heat Resistance (Charge & Discharge)	(1) Appearance: No Visible Damage (2) DF ($\tan\delta$) ≤ 0.005 (3) Capacitance Change: $\pm 10\%$ of The Initial Value. (4) Insulation Resistance: $\geq 50\%$ of the rated value	a. Test Voltage: Rated Voltage Charge for 2 Sec. Discharge for 2 Sec. Repeated For 100,000 \pm 1000 Cycles b. Test Temperature: $85^{\circ}\text{C} \pm 2^{\circ}\text{C}$
14	Heat Resistance (Continuous)	(1) Appearance : No Visible Damage (2) DF ($\tan\delta$) ≤ 0.005 (3) Capacitance Change : $\pm 7\%$ of The Initial Value (4) Insulation Resistance: $\geq 50\%$ of the rated value	a. Test Voltage: 125% of The Rated Voltage. b. Test Temperature: $85^{\circ}\text{C} \pm 2^{\circ}\text{C}$. c. Test Times: 500 \pm 24Hrs

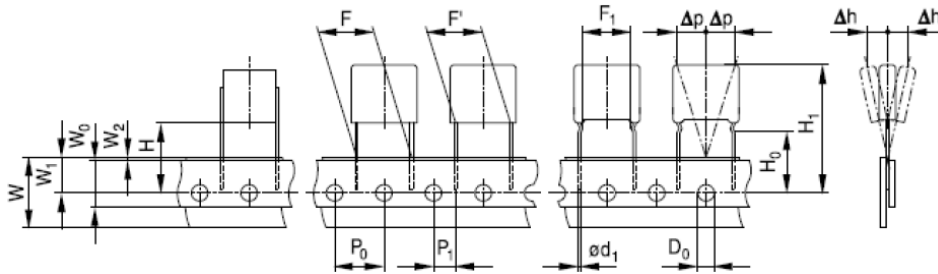
CMPB Series

Metallized Polypropylene Film Capacitors (Encapsulated)

TRIGON
COMPONENTS

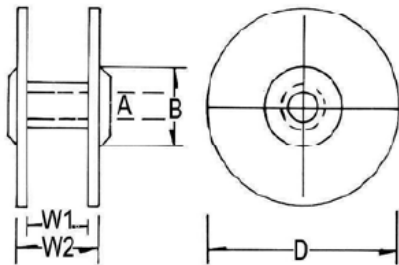
Package Information

Standard 15 mm
 $P_0 = 12.7$ mm



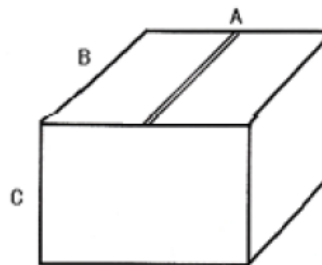
Symbol	ϕd_1	D_0	F	F'	F_1	H	H_0	H_1	
Dimension (mm)	0.6; 0.8	4.0	15.0	15.0	12.1	18.5	16.0	37.5	
Tolerance (mm)	± 0.05	± 0.2	$+0.6/-0.1$	± 0.4	± 0.1	± 0.5	± 0.5	max.	
Symbol	P_0	P_1	W	W_0	W_1	W_2	t	Δh	Δp
Dimension (mm)	12.7	5.2	18.0	12.0	9.0	0.5	0.7	0	0
Tolerance (mm)	± 0.2	± 0.7	± 0.5	± 0.5	± 0.5	± 0.05	± 0.2		

Reel



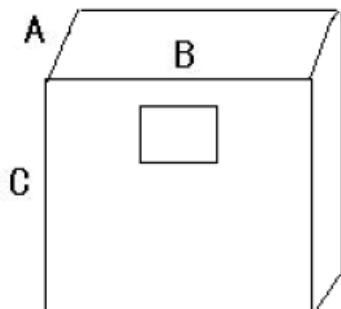
A: 30 \pm 3
B: 90 Min
D: 345 Max
W1: 37+2-2mm
W2: 55Max

Carton



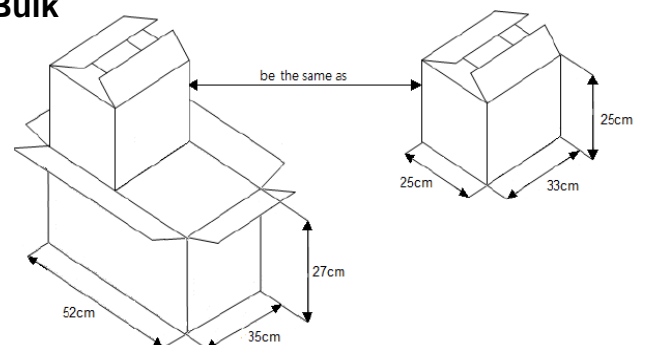
A: 330 Max
B: 360 Max
C: 360 Max

Ammo



A: 60 mm
B: 355mm
C: 355mm

Bulk



PCS/BAG	PCS/Small bag 52*27*35	PCS/big bag 33*25*25
300	3000	6000
500	5000	10000