



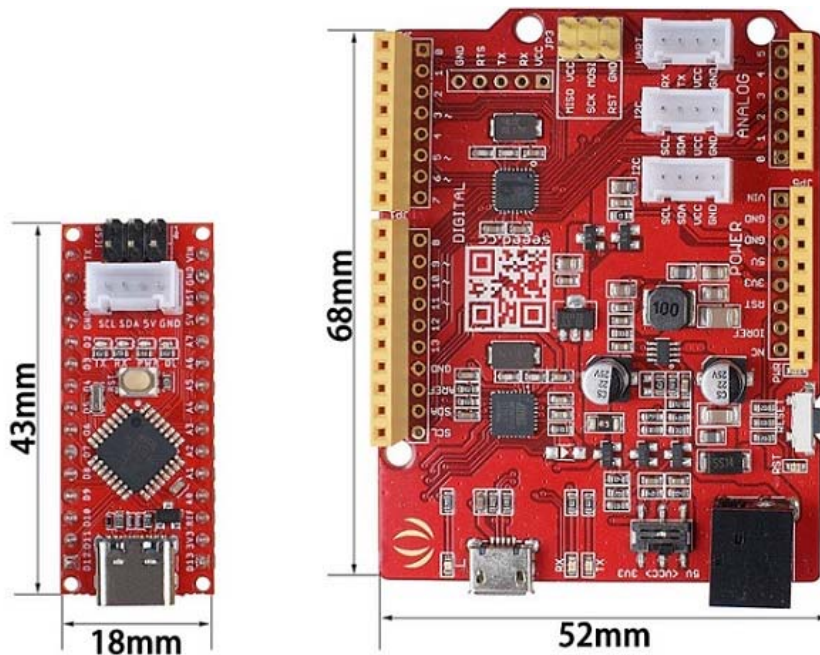
Seeeduino Nano

SKU 102010268

The Seeeduino Nano is a compact board similar to the [Seeeduino V4.2](#)/Arduino UNO, and it is fully compatible with [Arduino Nano](#) on pinout and sizes.

Seeeduino Nano VS. Seeeduino V4.2

The same as Seeedunio V4.2, Seeeduino Nano is built around Atmega328P -- 8-bit AVR microcontroller. So you can use the same program code on both boards. However, the dimensions of the two are significantly different. Less than a quarter of the size, but with almost the same features, Seeeduino Nano will save more space for your project, more suitable for space-constrained scenes.



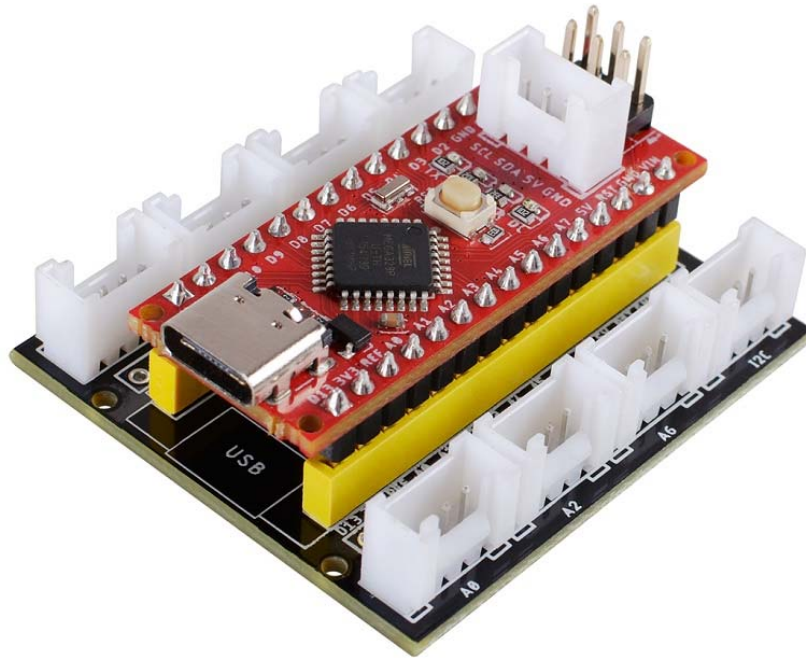
Seeeduino Nano VS. Arduino Nano

First, the most intuitive difference is the price. The Seeeduino Nano offers the same features and high-quality experience as the Arduino Nano in less than half the price. On the other hand, the Seeeduino Nano has also made the following improvements compared to the Arduino Nano. 1-Change the Mini-USB into Type-C, which is symmetrical and reversible. 2- Add one Grove I2C connector, with the help [Grove system](#), you can play with hundreds of sensors and actuators simply by plugging. We've listed the main differences between these products as follows:

Model	Processor	Input Voltage	IO Voltage	Analog In/Out	Digital IO/PWM	USB	Grove Connector
Seeeduino V4.2	ATmega328P	5V / 7-12V	3.3V/5V	6/0	14/6	micro-USB	2xI2C+1xUART
Seeeduino Nano	ATmega328P	5V / 7-12V	5V	8/0	14/6	Type C	1xI2C
Arduino Nano	ATmega328P	5V / 7-12V	5V	8/0	14/6	Mini-USB	

Seeeduno Nano Add-on

One more thing, we know that only one on-board Grove connector may not be enough, so we made this [Grove shield for Arduino Nano](#), which has 3 Grove digital connectors, 3 Grove analog connectors, 1 Grove I2C connector, and 1 Grove UART connector. For most projects, these Grove interfaces are more than enough, but if you still need to connect more grove modules, you can also use our [Grove - I2C Hub](#).



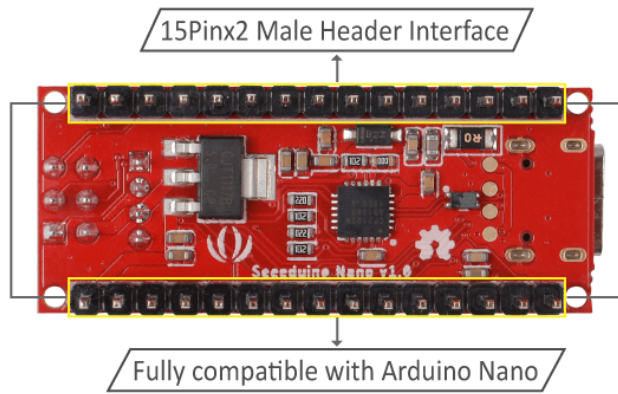
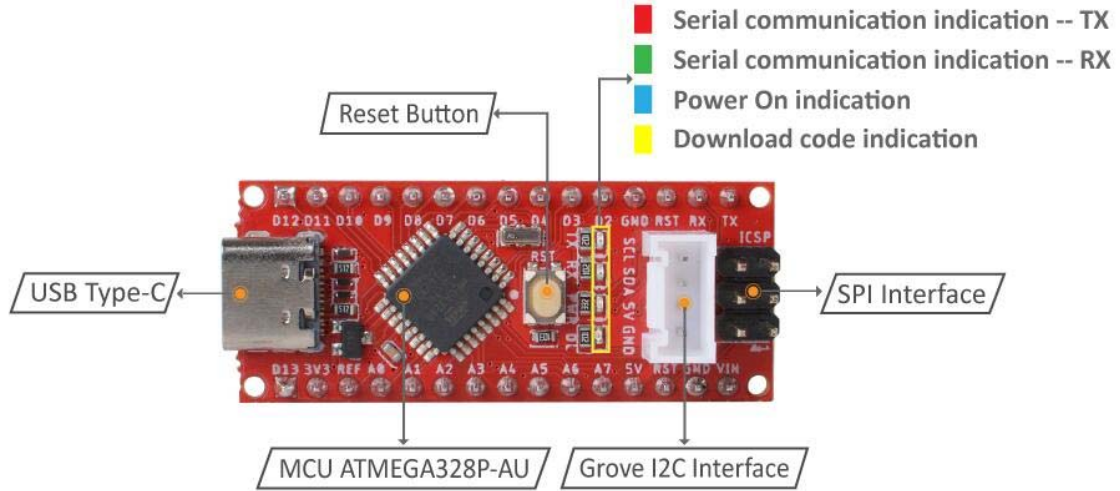
Note

This product does not contain this shield, if you need it, please click on [Grove shield for Arduino Nano](#) to view.

Features

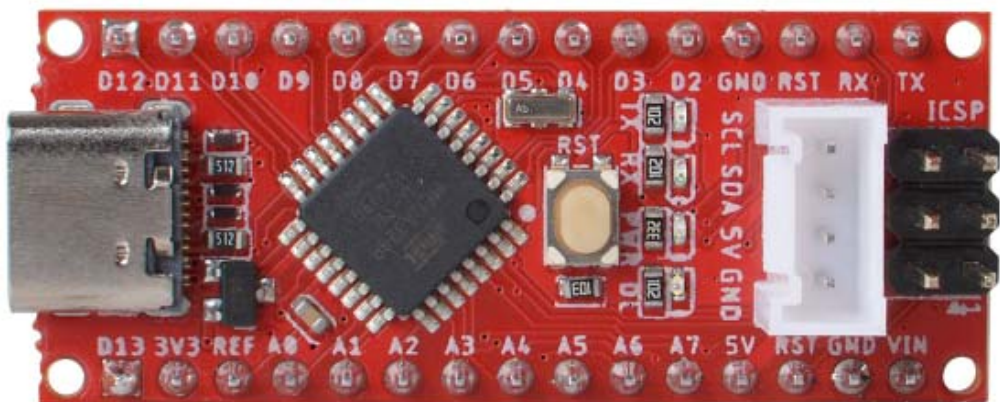
- 43mm*18mm Tiny board
- 16M ATmega328P
- Fully compatible with Arduino Nano
- USB Type C for Programming and power
- On-board Grove I2C connector
- Breadboard-friendly

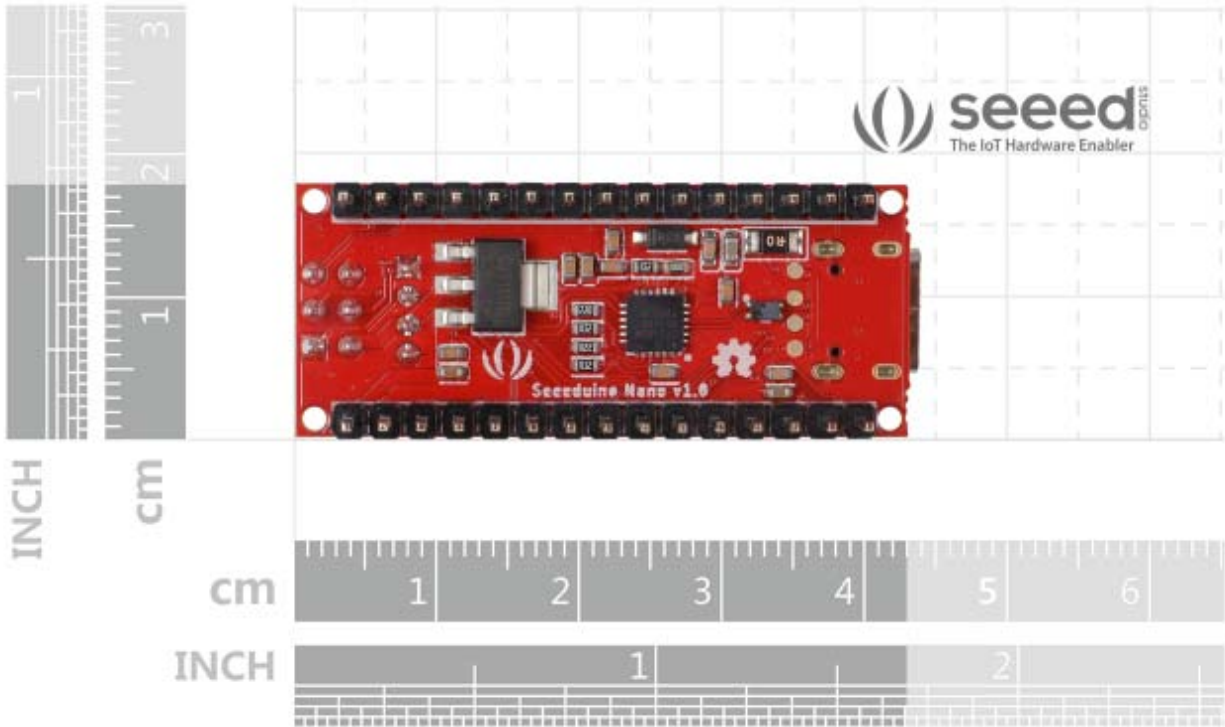
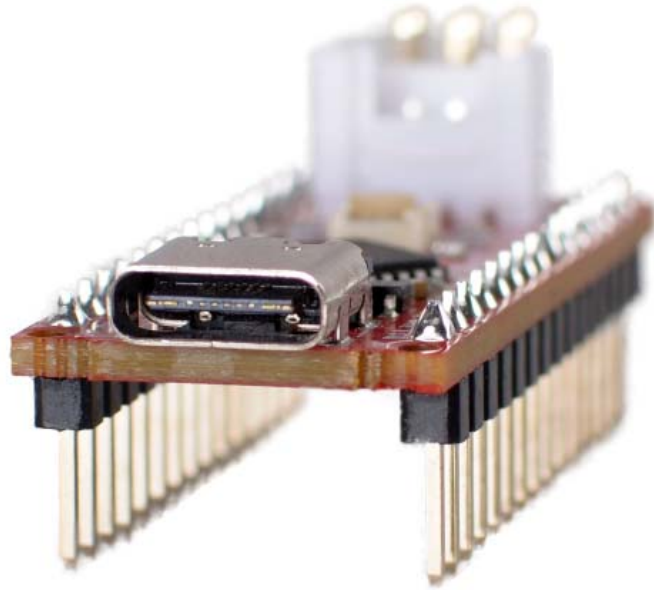
Hardware Overview



ECCN/HTS

ECCN	EAR99
HSCODE	8517709000
USHSCODE	85177000
UPC	





<https://www.seeedstudio.com/Seeduino-Nano-p-4111.html/7-17-19>