

B-CAM-M8C-00 Datasheet



B-CAM-M8C-00 is a full-featured breakout test and development board for the u-blox CAM-M8C GPS/GNSS module. Much effort has been given to lay the board out to the manufacturer's specifications, meeting all ground plane recommendations.

The purpose of the breakout board is two-fold:

1. Provide an easy way for beginners to get hands-on experience with a GPS/GNSS module and to see how code they write can work with it.
2. Provide designers specifically interested in the CAM-M8C or CAM-M8Q modules with an inexpensive way to see if these modules from u-blox meet their needs.

Module Manufacturer	u-blox
Module Model	CAM-M8C
Module Manufacturer's Product Page	https://www.u-blox.com/en/product/cam-m8-series
Board Dimensions	70 mm x 33.5 mm
Board Mass	10 g

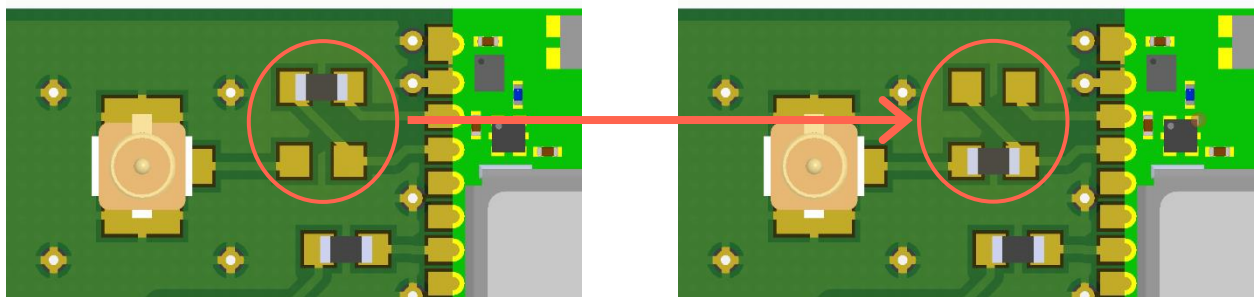
The quick tutorials found at https://petrichorlabs.io/docs/tutorial_B-CAM-M8C-00.pdf can help you to get moving quickly with the breakout board.

B-CAM-M8C-00 Datasheet

Pin Mapping

CAM-M8C Pin	B-CAM-M8C-00 Pin
D_S	D_SEL
RST	RESET_N
SBT	SAFEBOOT_N
TXD	TXD/SPI MISO
RXD	RXD/SPI MOSI
TPL	TIMEPULSE
LNA	LNA_EN
VCC	VCC
GND	GND
SDA	SDA/SPI CS_N
SCL	SCL/SPI CLK
EXT	EXTINT
VBK	not connected, or V_BCKP; see below

To switch the antenna input from the chip antenna built into the GNSS module to an antenna connected to the provided U.FL/UMCC connector, the antenna jumper must be moved. Simply unsolder the jumper in place and move it to the other position as shown here:



B-CAM-M8C-00 Datasheet

By default, the GNSS module's V_BKUP pin is connected to the VCC and VCC_IO pins, and not to the VBK header pin provided on the breakout board. This can be changed so that V_BKUP is instead connected to VBK. To make this change, unsolder the V_BKUP jumper and solder it in the other position as shown here:

