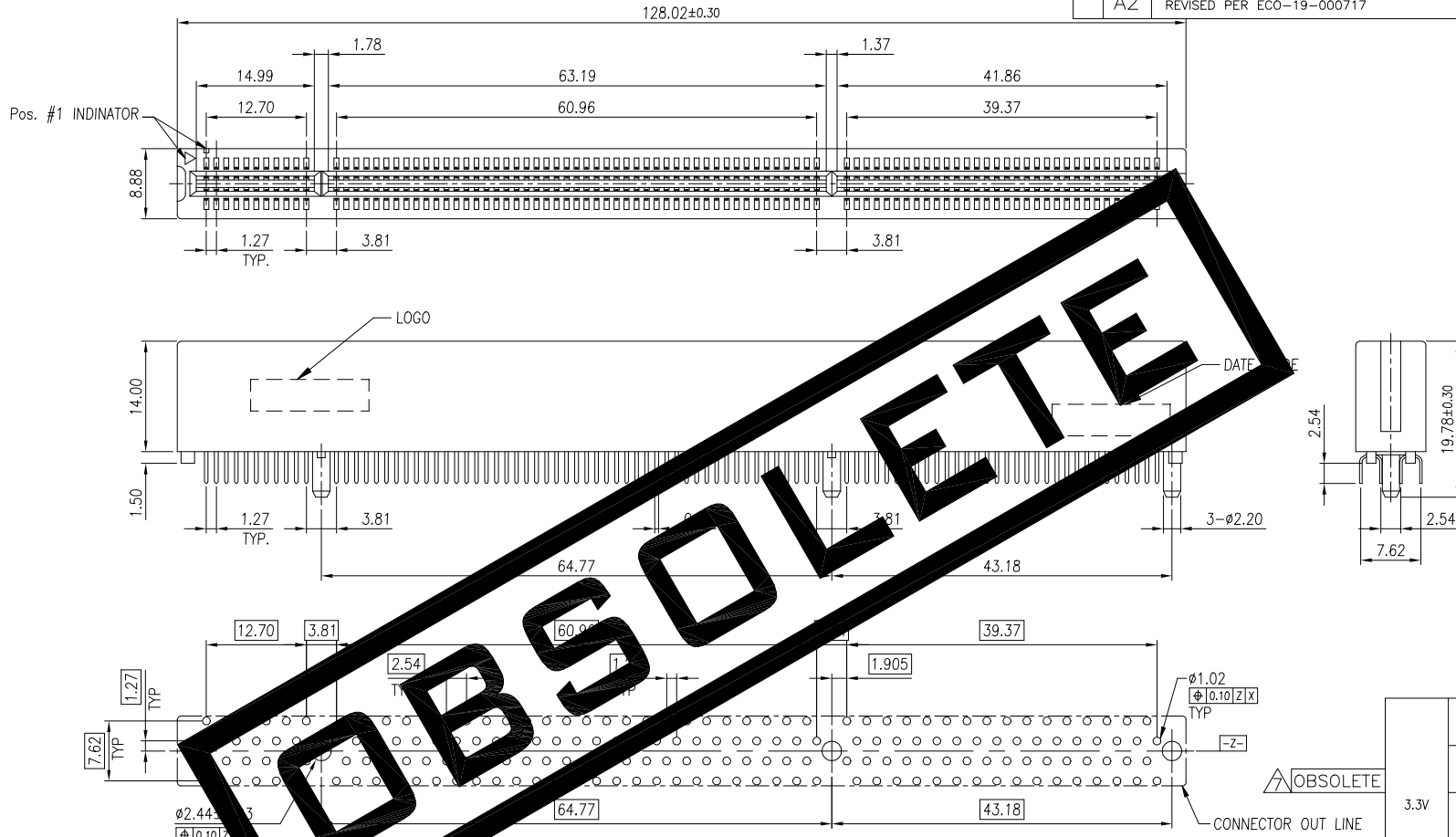


THIS DRAWING IS UNPUBLISHED. RELEASED FOR PUBLICATION
 © COPYRIGHT BY TYCO ELECTRONICS CORPORATION. ALL RIGHTS RESERVED.

LOC DW
 DIST —

REVISIONS					
P	LTR	DESCRIPTION	DATE	DWN	APVD
A		REDRAW AND REVISED (ECR-09-001487)	11JAN09	SC	WK
A1		REVISED PER ECO-09-024927	21JAN10	KK	HMR
A2		REVISED PER ECO-19-000717	16JAN19	AL	HL



RECOMMENDED PCB LAYOUT (TOP VIEW)
 TOLERANCE : ±0.05

NOTES:
 1. MATERIAL:
 HOUSING: PA46 ,UL 94V-0, COLOR: SEE TABLE.
 CONTACTS: PHOSPHOR BRONZE.

2. FINISH:
 CONTACTS:
 SELECTIVE GOLD (SEE TABLE) PLATED ON CONTACT AREA,
 2.54um [100u"] MIN. MATTE-TIN PLATING ON SOLDER TAIL,
 1.27um [50u"] MIN. NICKEL UNDERPLATED OVERALL.

3. WAVE SOLDER CAPABLE TO 265°C PER TE TEST SPEC.
 109-202, CONDITION B.

△ OBSOLETE PARTS: OBSOLETE CIS STREAMLINING PER D.RENAUD/D.SINISI

VOLTAGE	HOUSING COLOR	GOLD PLATING	PART NUMBER
3.3V	LIGHT GREEN (365C)	15u"	6-1734377-2
		G/F	6-1734377-1
	ORANGE (1575C)	15u"	4-1734377-2
		G/F	4-1734377-1
	GREEN (347C)	15u"	2-1734377-2
		G/F	2-1734377-1
WHITE	30u"	1734377-3	
	15u"	1734377-2	
	G/F	1734377-1	

THIS DRAWING IS A CONTROLLED DOCUMENT.		DWN S. CHIEN 12JAN2009	Tyco Electronics Corporation Taipei, Taiwan	
DIMENSIONS: MM		CHK S. CHIEN 12JAN2009	NAME	
TOLERANCES UNLESS OTHERWISE SPECIFIED:		APVD W. KODAMA 12JAN2009	PRODUCT SPEC 108-57384	
0 PLC ± -		QUALIFICATION TEST REPORT 501-57440		
1 PLC ± 0.30		SIZE A3 CAGE CODE 00779 C=1734377		
2 PLC ± 0.20		DRAWING NO		
3 PLC ± -		RESTRICTED TO		
4 PLC ± -		SCALE — SHEET 1 OF 4 REV A2		
ANGLES ± -		CUSTOMER DRAWING		
MATERIAL SEE NOTE		FINISH SEE NOTE		

THIS DRAWING IS UNPUBLISHED.

RELEASED FOR PUBLICATION

© COPYRIGHT BY TYCO ELECTRONICS CORPORATION. ALL RIGHTS RESERVED.

LOC

DIST

REVISIONS

DW

P

LTR

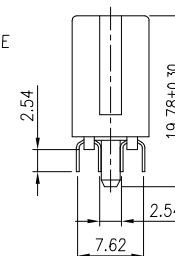
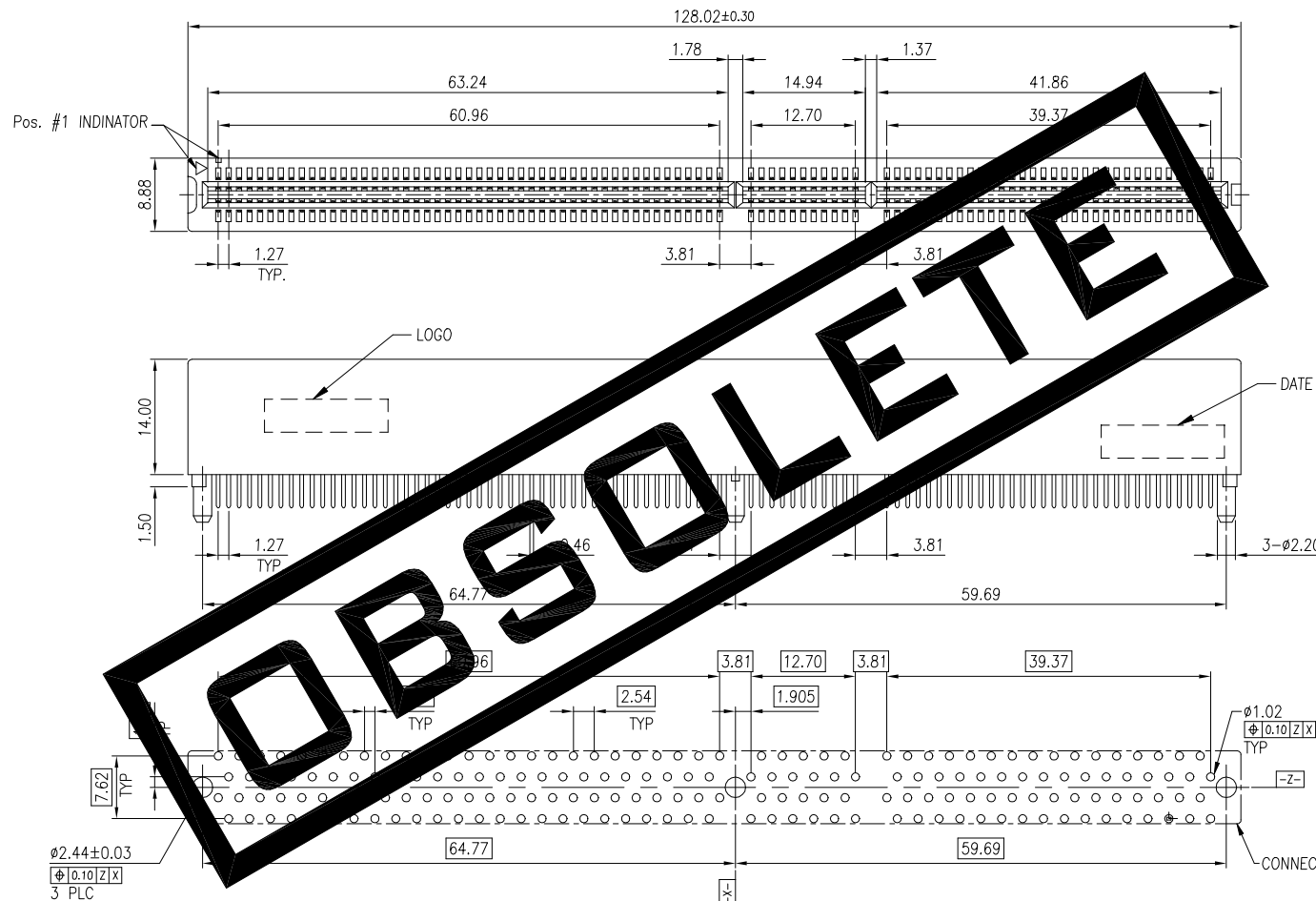
DESCRIPTION

DATE

DWN

APVD

SEE SHEET 1



RECOMMENDED PCB LAYOUT (TOP VIEW)
TOLERANCE : ±0.05

NOTES:

1. MATERIAL:
HOUSING: PA46 ,UL 94V-0, COLOR: SEE TABLE.
CONTACTS: PHOSPHOR BRONZE.

2. FINISH:
CONTACTS:
SELECTIVE GOLD (SEE TABLE) PLATED ON CONTACT AREA,
2.54um [100u"] MIN. MATTE-TIN PLATING ON SOLDER TAIL,
1.27um [50u"] MIN. NICKEL UNDERPLATED OVERALL.

3. WAVE SOLDER CAPABLE TO 265°C PER TE TEST SPEC.
109-202, CONDITION B.

OBSOLETE	5.0V	LIGHT GREEN (365C)	15u"	7-1734377-2
			G/F	7-1734377-1
		ORANGE (1575C)	15u"	5-1734377-2
			G/F	5-1734377-1
		GREEN (347C)	15u"	3-1734377-2
	G/F	3-1734377-1		
		WHITE	30u"	1-1734377-3
			15u"	1-1734377-2
			G/F	1-1734377-1
VOLTAGE	HOUSING COLOR	GOLD PLATING	PART NUMBER	

THIS DRAWING IS A CONTROLLED DOCUMENT.		DWN		Tyco Electronics Corporation Taipei, Taiwan	
DIMENSIONS: MM		CHK		NAME	
TOLERANCES UNLESS OTHERWISE SPECIFIED:		APVD		PCI, CARD EDGE 184P, VERTICAL, DIP TYPE	
0 PLC ± -		PRODUCT SPEC		SIZE	
1 PLC ± 0.30		QUALIFICATION TEST REPORT		CAGE CODE	
2 PLC ± 0.20		WEIGHT		DRAWING NO	
3 PLC ± -		CUSTOMER DRAWING		RESTRICTED TO	
4 PLC ± -				A3 00779 C=1734377	
ANGLES ± -				SCALE	
MATERIAL SEE NOTE		FINISH SEE NOTE		SHEET 2 OF 4	
				REV A2	

4

3

2

1

THIS DRAWING IS UNPUBLISHED.

RELEASED FOR PUBLICATION

- . - .

LOC

DIST

REVISIONS

© COPYRIGHT BY TYCO ELECTRONICS CORPORATION.

ALL RIGHTS RESERVED.

DW

P

LTR

DESCRIPTION

DATE

DWN

APVD

SEE SHEET 1

DETAIL B
SCALE: 2:1

RECOMMENDED MATING COMPONENT BOARD (3.3V)

Tolerance: ±0.05

RECOMMENDED MATING COMPONENT BOARD (5.0V)

Tolerance: ±0.05

THIS DRAWING IS A CONTROLLED DOCUMENT.

DWN

CHK

APVD

PRODUCT SPEC

QUALIFICATION TEST REPORT

WEIGHT

CUSTOMER DRAWING

Tyco Electronics Corporation
Taipei, Taiwan

NAME

PCI, CARD EDGE 184P, VERTICAL, DIP TYPE

SIZE

CAGE CODE

DRAWING NO

RESTRICTED TO

A3

00779

C=

1734377

-

DIMENSIONS:

MM

TOLERANCES UNLESS
OTHERWISE SPECIFIED:

0 PLC	± -
1 PLC	± -
2 PLC	± -
3 PLC	± -
4 PLC	± -
ANGLES	± -

MATERIAL

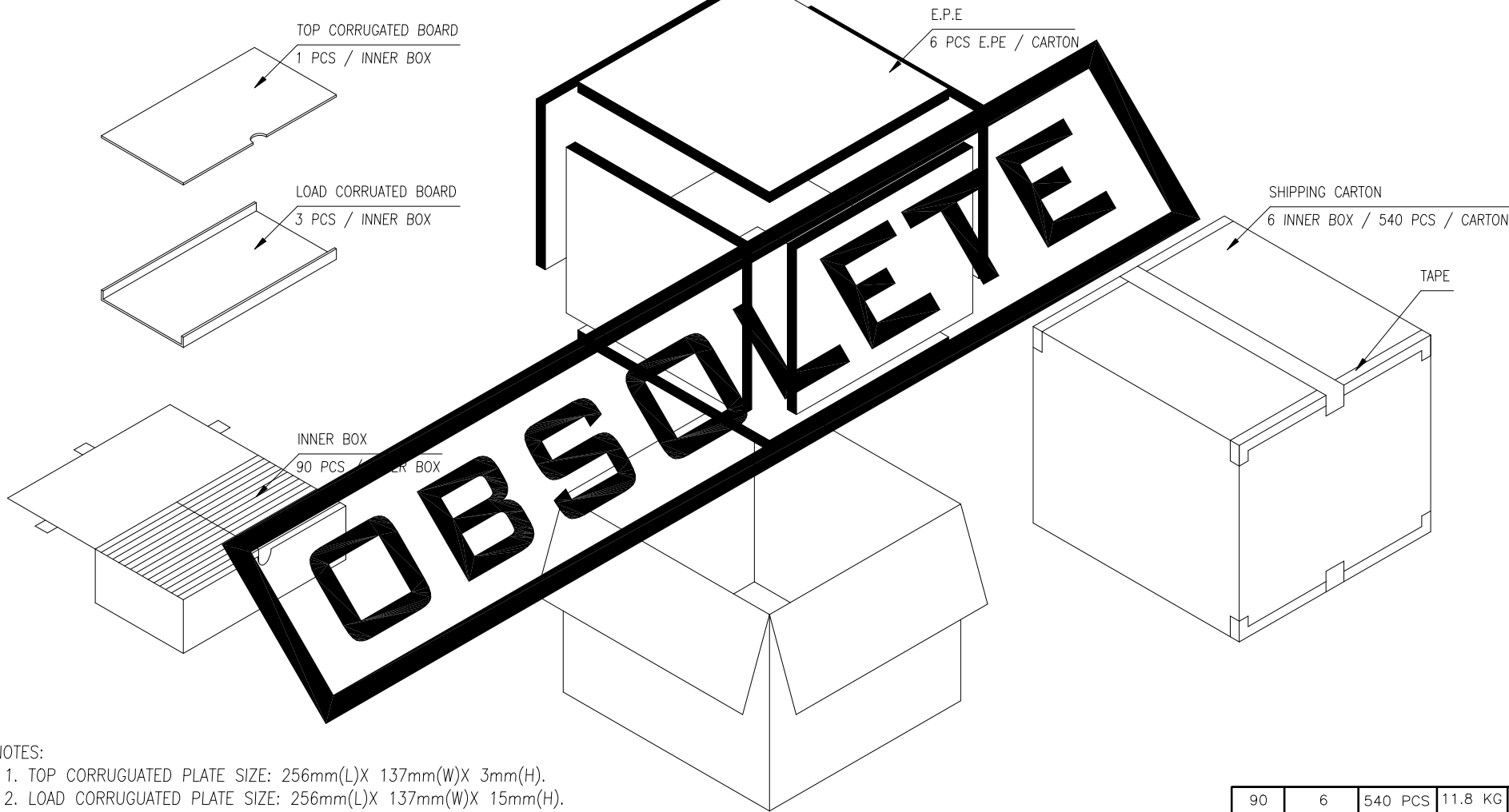
FINISH

AMP 1470-19 REV 31MAR2000

AMP 1470-19 REV 31MAR2000

THIS DRAWING IS UNPUBLISHED. RELEASED FOR PUBLICATION
 © COPYRIGHT BY TYCO ELECTRONICS CORPORATION. ALL RIGHTS RESERVED.

LOC	DIST	REVISIONS			
P	LTR	DESCRIPTION	DATE	DWN	APVD
DW	—				



NOTES:

1. TOP CORRUGATED PLATE SIZE: 256mm(L)X 137mm(W)X 3mm(H).
2. LOAD CORRUGATED PLATE SIZE: 256mm(L)X 137mm(W)X 15mm(H).
3. INNER BOX SIZE: 272mm(L)X 147mm(W)X 78mm(H).
4. CARTON SIZE: 345mm(L)X 320mm(W)X 285mm(H).
5. NET WEIGHT: 10.0 Kg.
6. GROSS WEIGHT: 11.8 Kg.

90	6	540 PCS	11.8 KG	10.0 KG
PCS / BOX	BOX / CARTON	QUANTITY	GROSS WEIGHT	NET WEIGHT

THIS DRAWING IS A CONTROLLED DOCUMENT.		DWN		Tyco Electronics Corporation Taipei, Taiwan	
DIMENSIONS: MM		CHK		NAME	
TOLERANCES UNLESS OTHERWISE SPECIFIED:		APVD		PCI, CARD EDGE 184P, VERTICAL, DIP TYPE	
0 PLC ± -		PRODUCT SPEC		SIZE CAGE CODE DRAWING NO	
1 PLC ± -		QUALIFICATION TEST REPORT		A3 00779 C=1734377	
2 PLC ± -		WEIGHT		RESTRICTED TO	
3 PLC ± -		CUSTOMER DRAWING		SCALE — SHEET 4 OF 4 REV A2	
4 PLC ± -					
ANGLES ± -					
MATERIAL		FINISH			