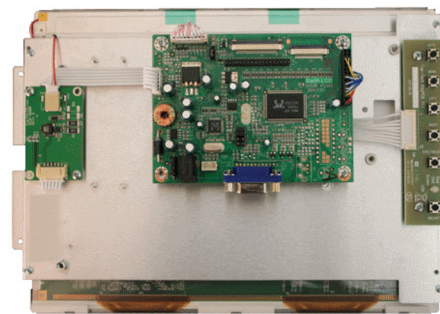


OF-10.4-M5

Open Frame LCD Monitors are the easiest way to integrate (or upgrade) a state of the art TFT LCD Monitor into your project.

The unit comes completely assembled with a color TFT LCD, controller board (HDMI, VGA and NTSC/PAL video inputs), on-system display button board, backlight driver board, integrated with a sheet metal bracket and ready for installation.

Earth Computer Technologies, Inc is a maker of industrial LCDs and embedded products including the award winning ezLCD technology from EarthLCD, the recognized leader in smart touch LCDs.



10.4" Open Frame LCD Monitor

Commercial and industrial applications include: ATM machines, industrial equipment, instrumentation, kiosks, military, medical, arcade games, marine, security, test equipment, gaming, or any application requiring a color LCD display providing a VGA image.

Features:

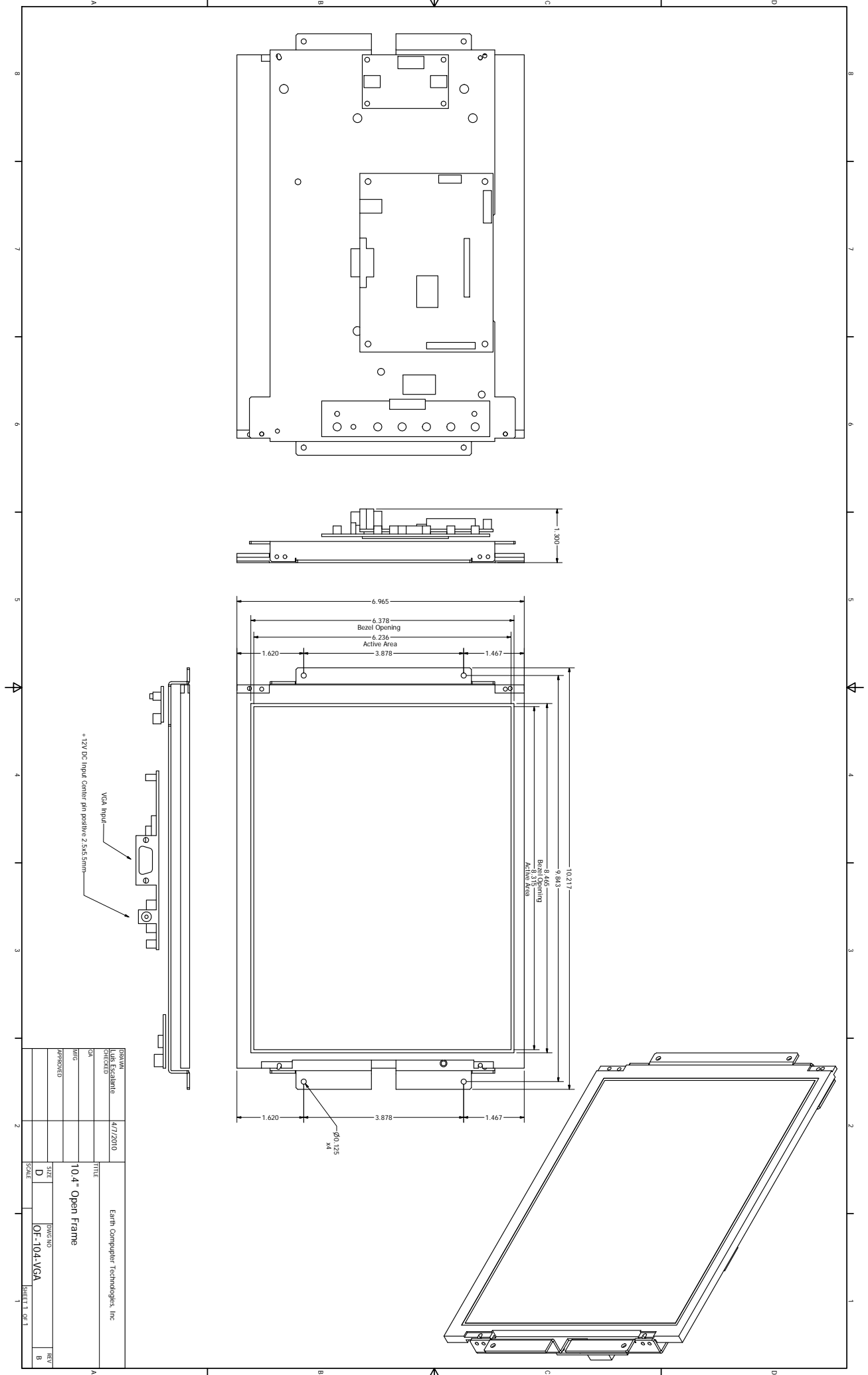
- 10.4" SVGA LCD panel with LED backlight
- HDMI, VGA and NTSC/PAL video inputs
- Commercial and industrial applications
- -20°C ~ +70°C operating temperature range
- High contrast ratio: 400:1 typical
- 400 cd/m2 brightness typical
- 20,000 hours LED life typical
- OSD Controls: contrast, phase, clock, color, H&V position, auto-tune, recall
- +12 volt power

Options (sold separately):

- AC/DC 12V power adapter, universal 100-240 volts
- Combo USB or RS232 four wire resistive touchscreen

Product Specifications:

- Screen Size (Diagonal): 10.4"
- Display Technology: TFT
- Resolution: 800 x 600 (SVGA)
- Brightness: 400 Nits
- Interface Input Modes: VGA
- Colors: 262,144
- Active Area (mm): 211.20 x 158.4
- Contrast Ratio: 400:1
- Horizontal Viewing Angle: 65° L/R
- Vertical Viewing Angle: 45° U / 65° D
- Operating Temperature: -20°C to 70°C
- Storage Temperature: -30°C to 80°C
- Input Voltage: +12V DC
- Power Consumption: 510 mA
- Display Backlight: LED
- RoHS Compliant: Yes
- Outline Dimensions (mm):
236 (W) x 176.9 (H) x 5.6 (D)
- Outline Dimensions (in): 9.29 x 6.96
- Cable Sold Separately
- Touch Screen Available: Yes
- Industrial Enclosure Available: Yes



+12V DC Input Center pin positive 2.5x5.5mm

VGA Input

DESIGN	DATE	BY	APPROVED	SIZE	DWG NO	REV
Earth Computer Technologies, Inc	4/7/2010			D	OF-10.4-VGA	B
TITLE			SHEET 1 OF 1			
10.4" Open Frame						
DRAWN						
CHECKED						
DATE						
BY						
APPROVED						
DATE						
BY						